

Monitoramento e Previsões de Chuva para a Bacia do Rio Paraíba do Sul

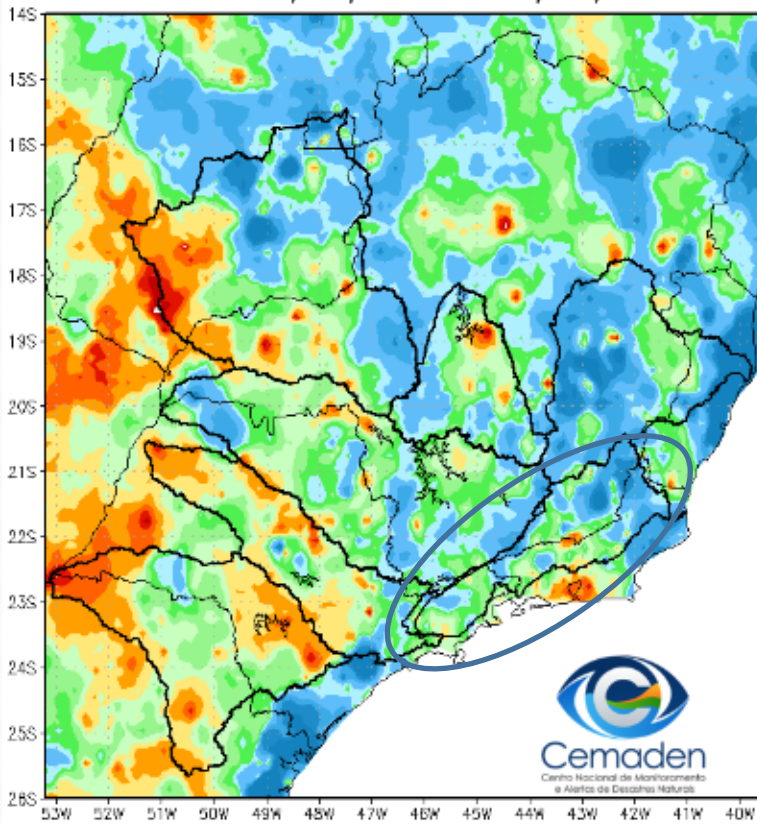


Cemaden
Centro Nacional de Monitoramento
e Alertas de Desastres Naturais

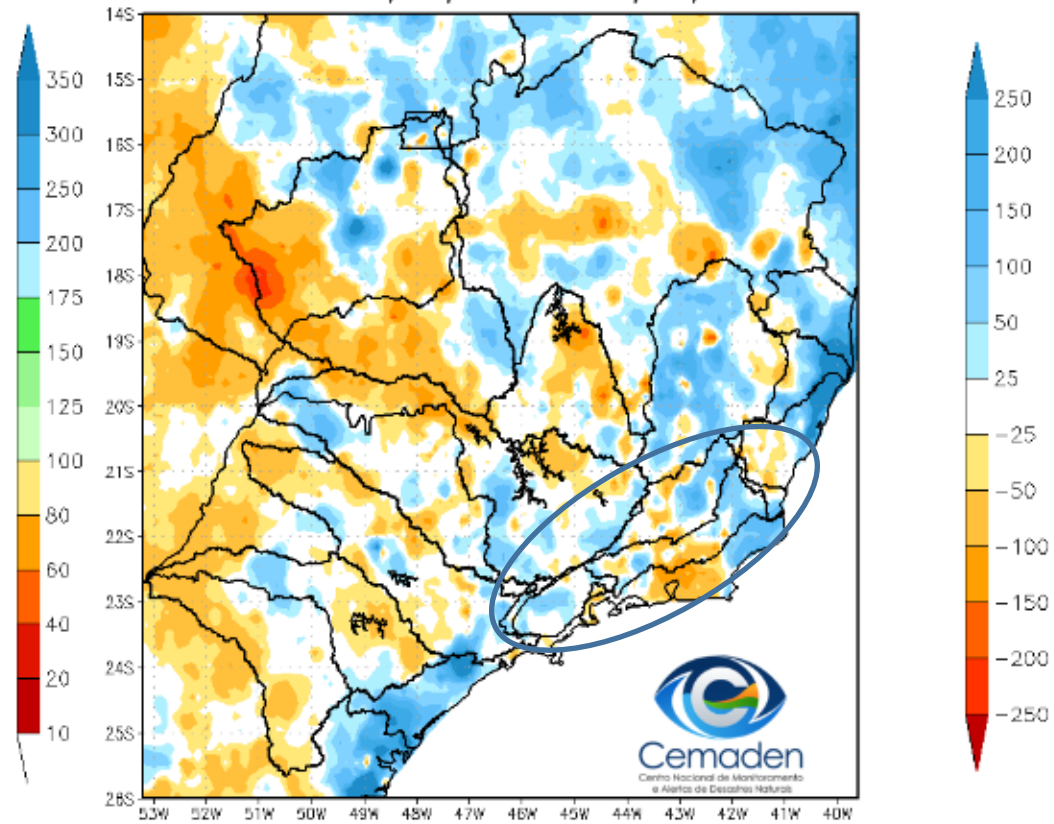
07 de Dezembro de 2022

Precipitação acumulada nos últimos 30 dias

Precipitação Acumulada (mm) A.S.
Período: 06/11/2022 a 06/12/2022

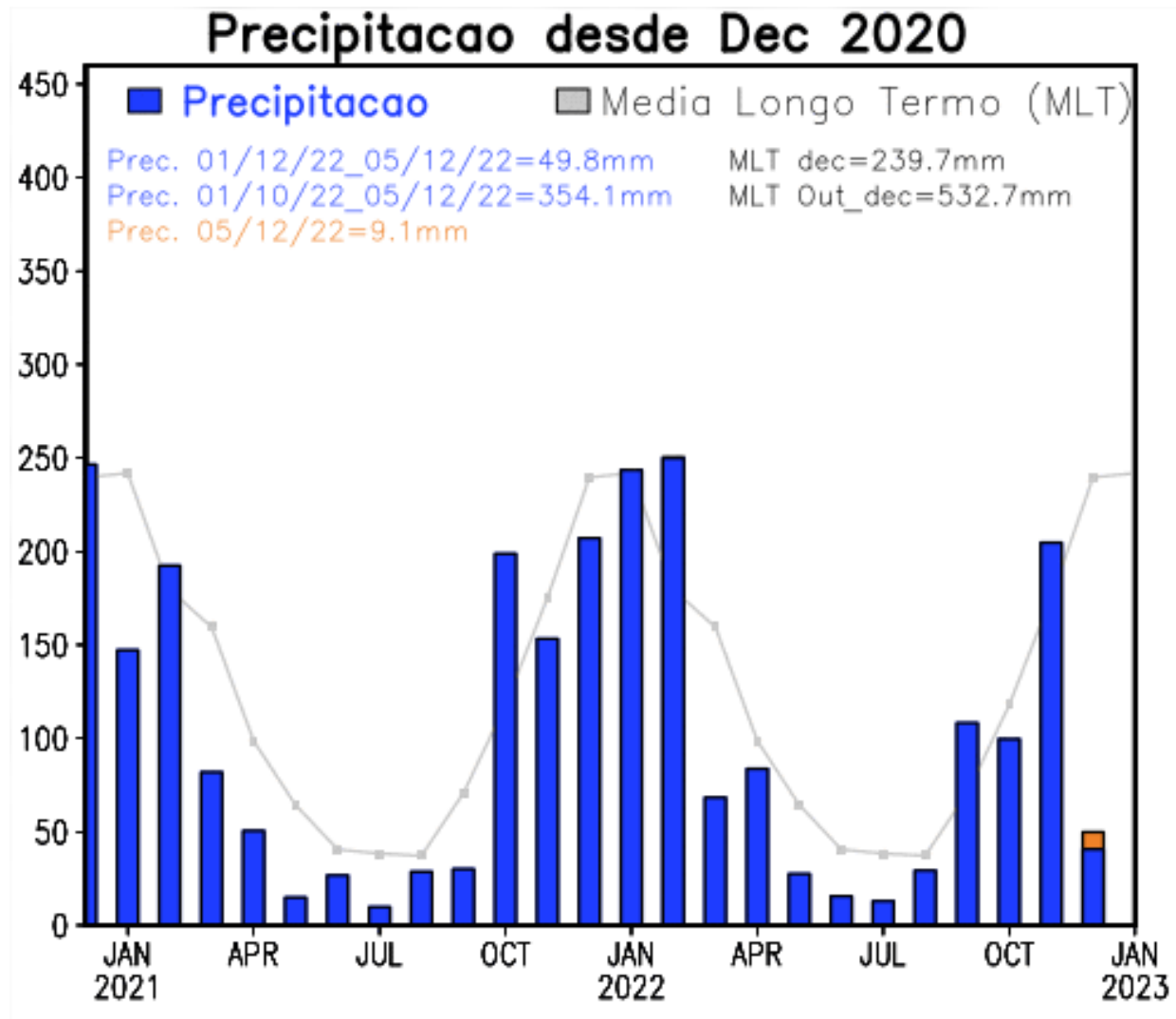


Anomalia de Precipitação (mm) A.S.
Período: 06/11/2022 a 06/12/2022

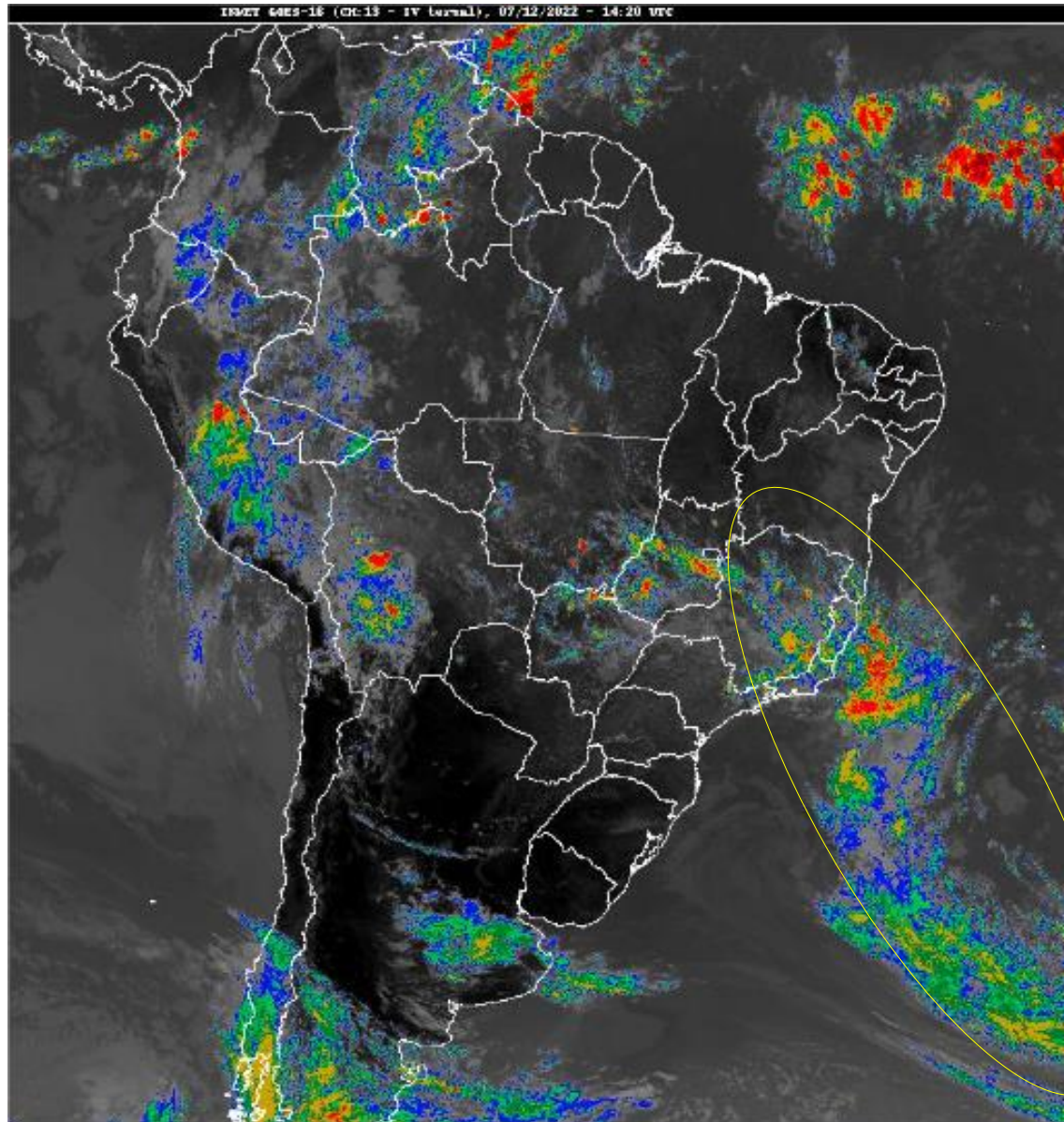


FONTE DOS DADOS INPE

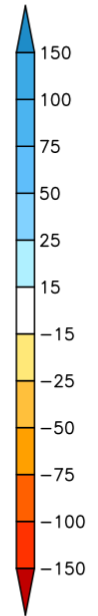
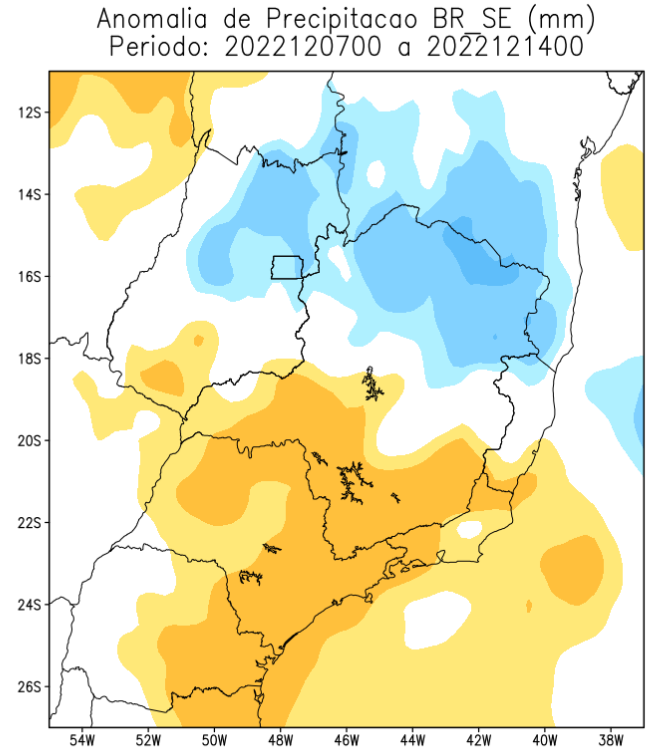
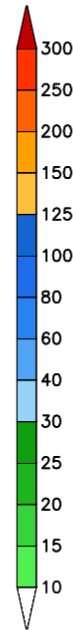
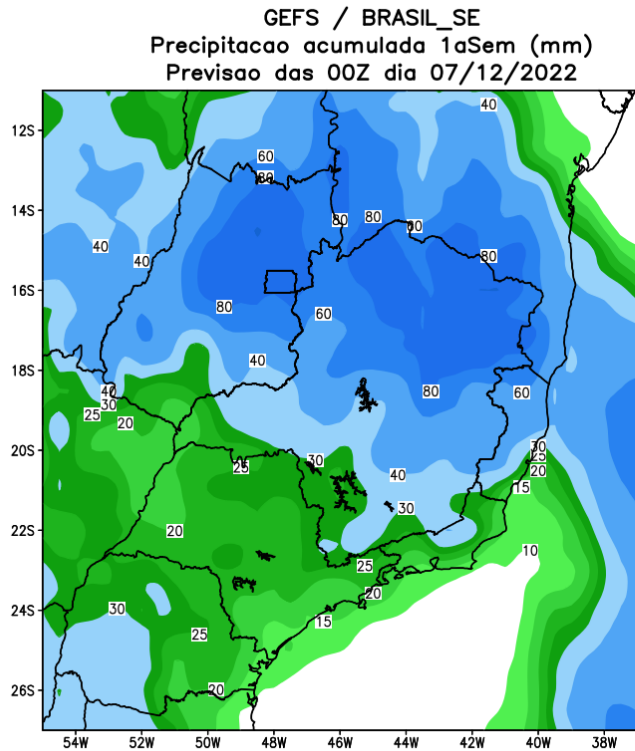
Precipitação nos últimos 2 anos



Situação meteorológica atual

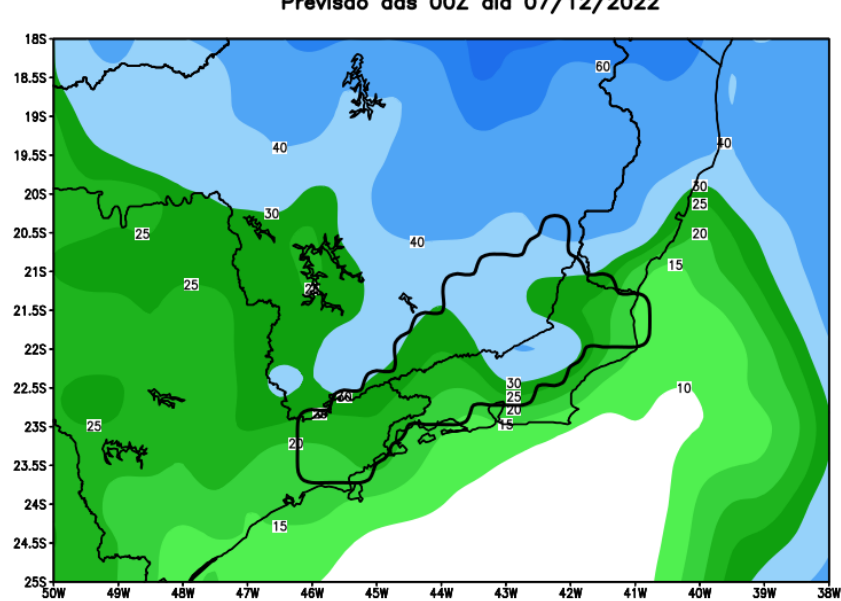


Previsão de chuva para os próximos 7 dias

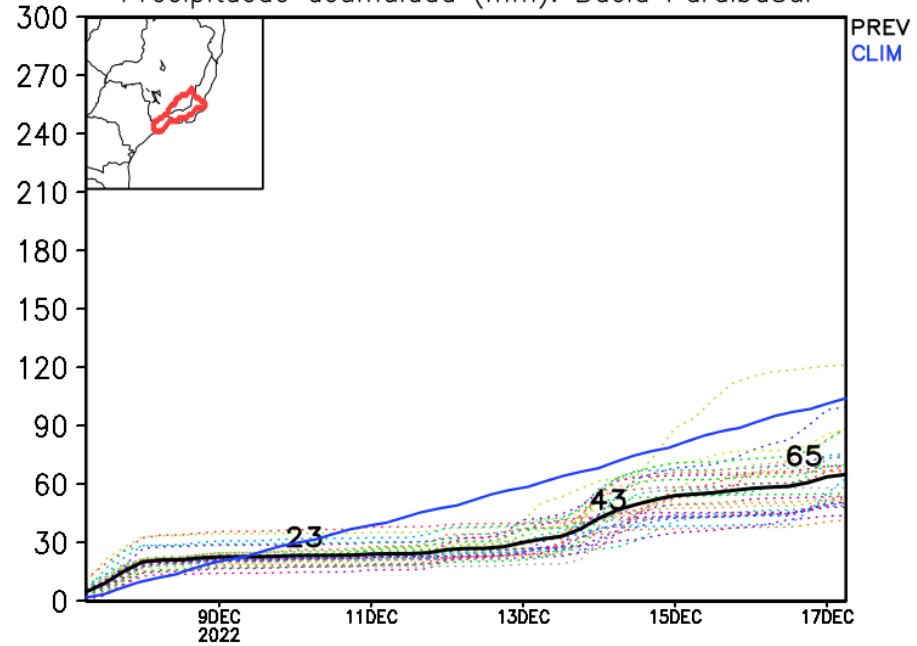


Rio Paraíba do Sul

GEFS / Bacia do Rio Paraíba do Sul
Precipitacao acumulada em 7 dias (mm)
Previsao das 00Z dia 07/12/2022



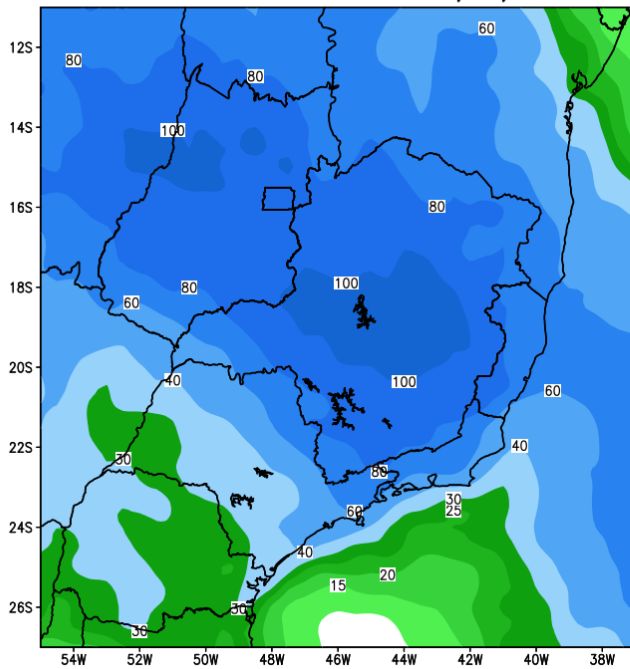
Precipitacao acumulada (mm): Bacia ParaibaSul



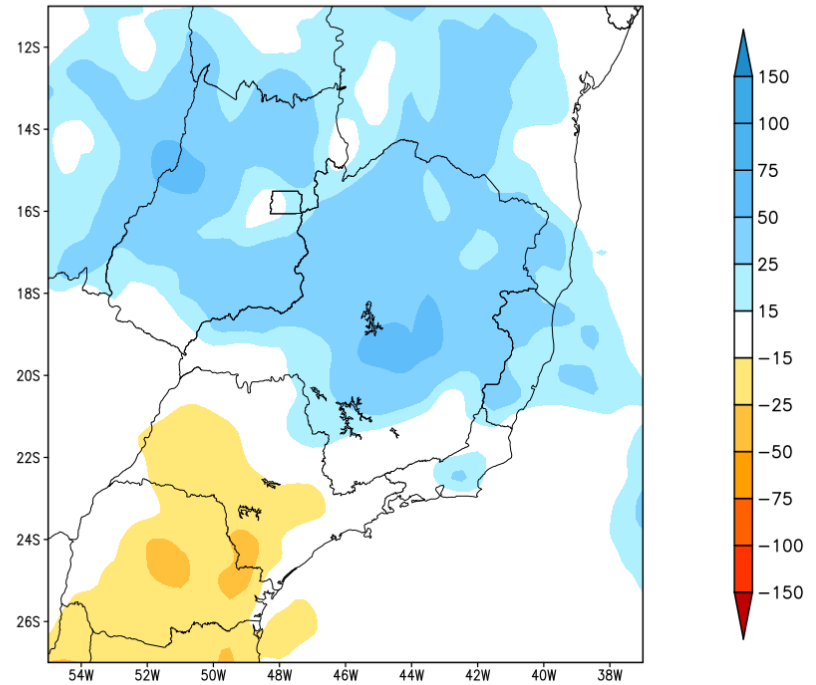
Modelo GFS/NOAA

Tendência para a 2a semana

GEFS / BRASIL_SE
Precipitacao acumulada 2aSem (mm)
Previsao das 00Z dia 07/12/2022

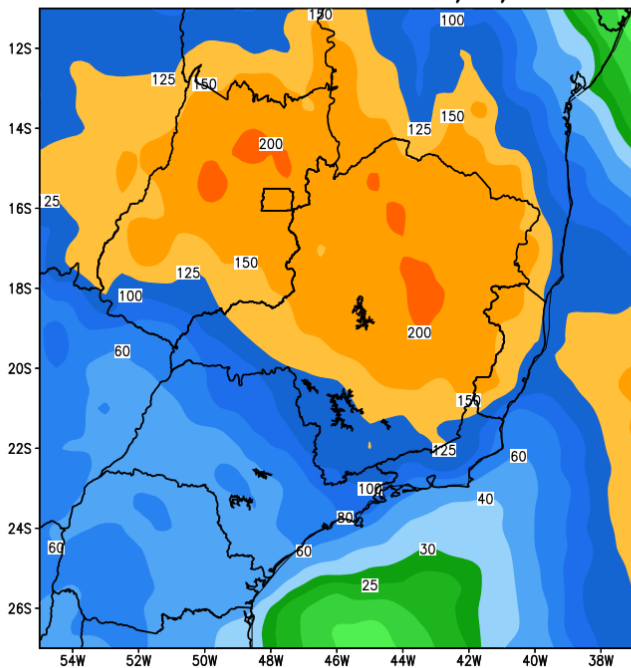


Anomalia de Precipitacao BR SE (mm)
Periodo: 2022121500 a 2022122100

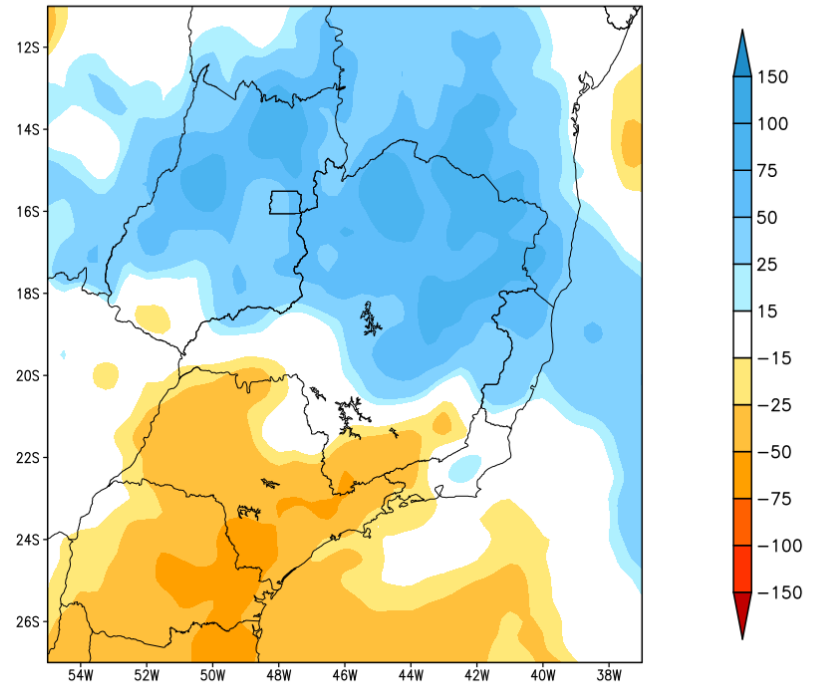


Tendência para as próximas duas semanas

GEFS / BRASIL_SE
Precipitacao acumulada 14dias (mm)
Previsao das 00Z dia 07/12/2022

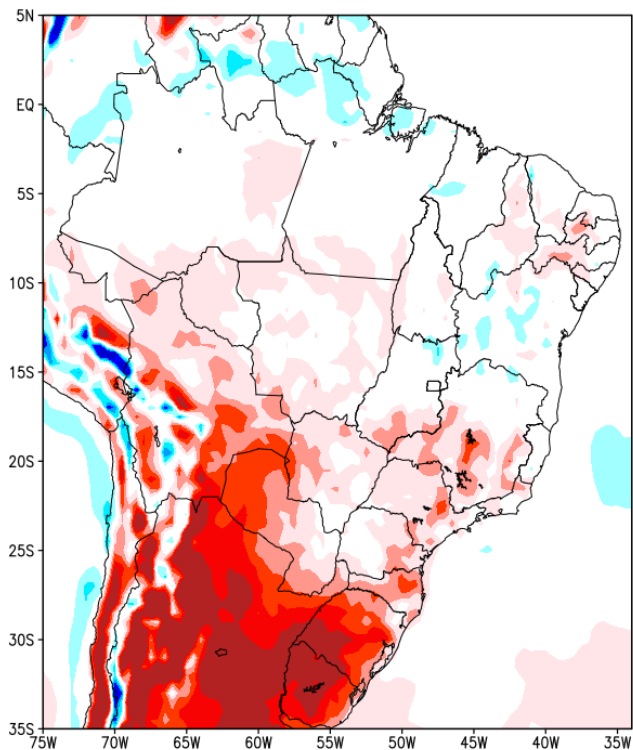


Anomalia de Precipitacao BR SE (mm)
Periodo: 2022120700 a 2022122100

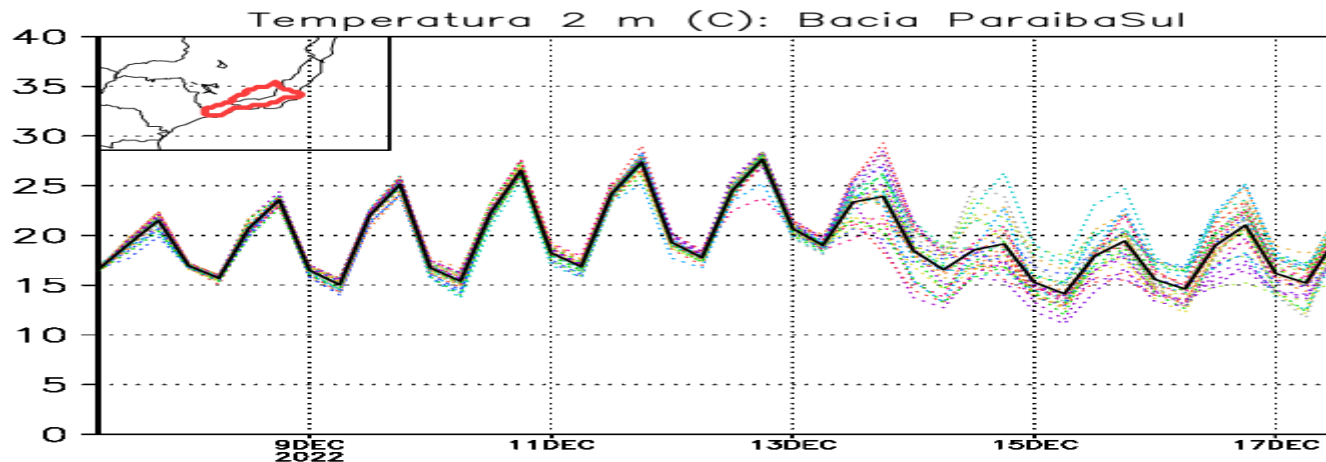
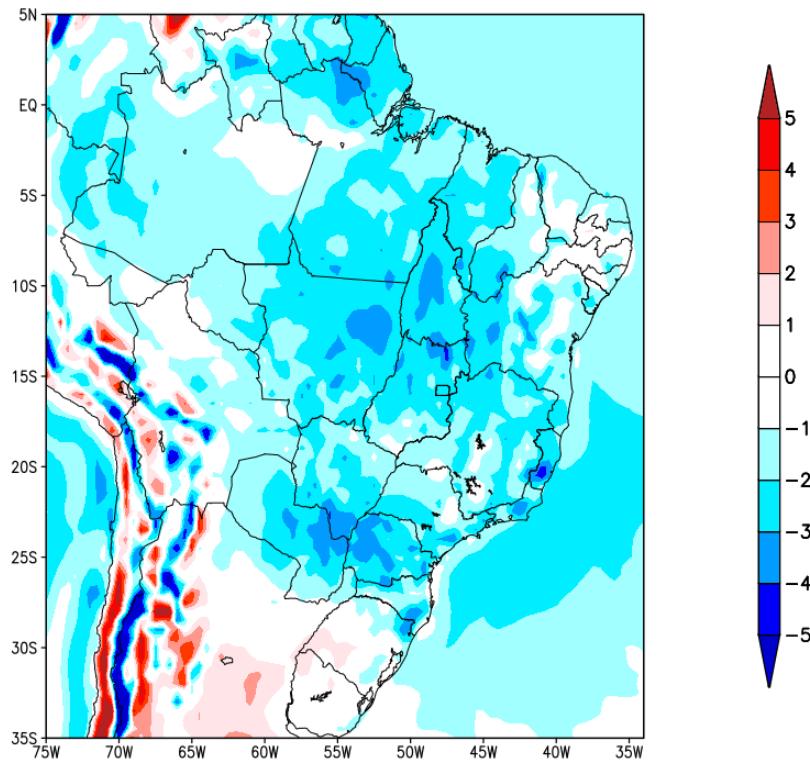


Previsão de Temperatura para as próximas duas semanas

Anomalia de Temperatura BR (C)
Período: 2022120700 a 2022121400



Anomalia de Temperatura BR (C)
Período: 2022121500 a 2022122100

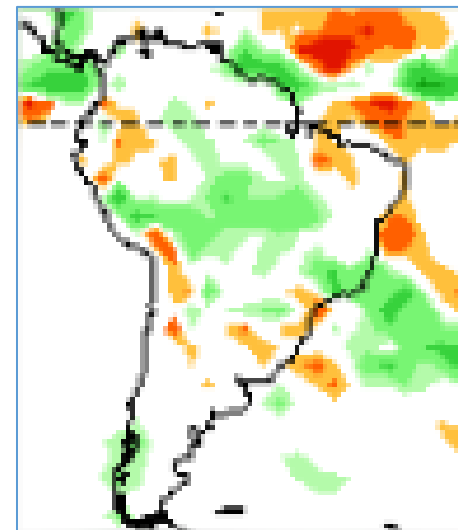
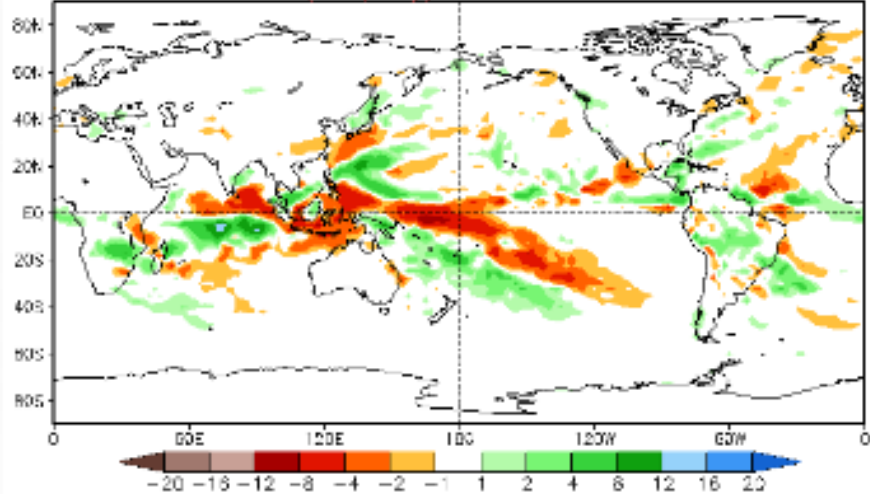


Tendência 3a e 4a semanas

16 Member Ensemble Mean Forecast from 08Dec2022

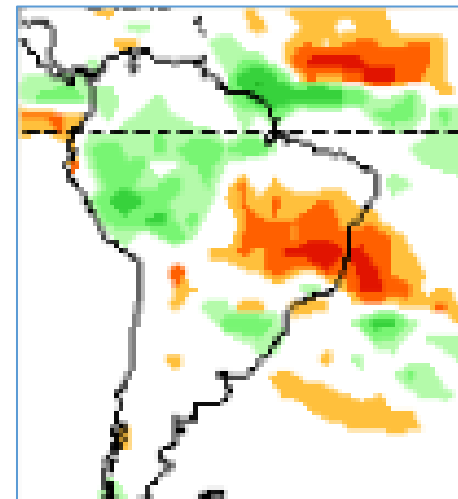
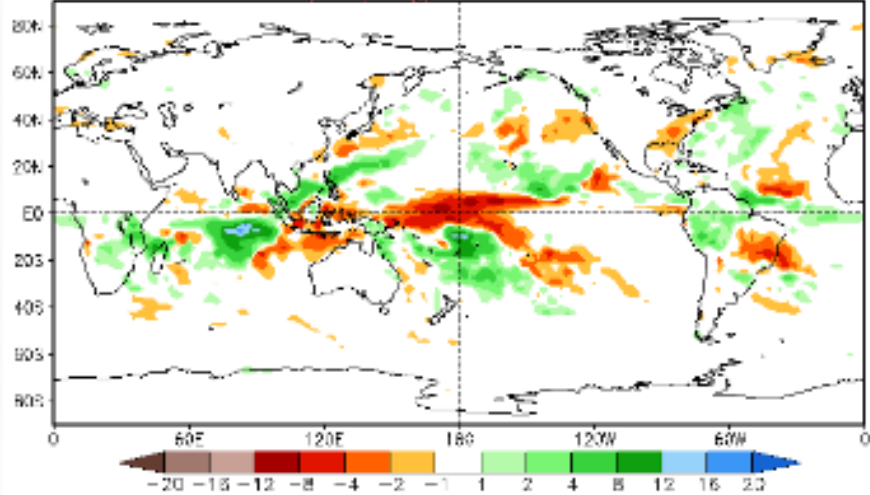
Week 3 Anomalies (mm/day)

21Dec2022-27Dec2022



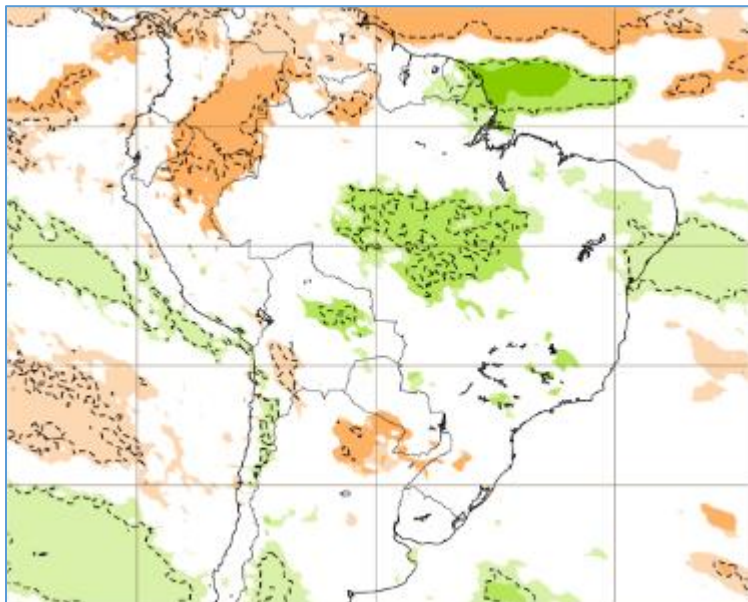
Week 4 Anomalies (mm/day)

28Dec2022-3Jan2023

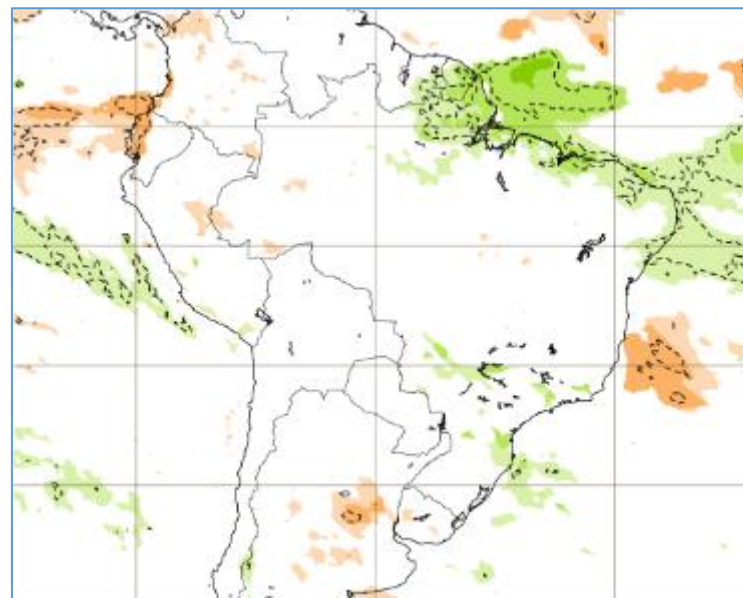


Tendência para 3ª e 4ª semanas

19-26/12



26/12-02//01



Previsão sazonal de Chuva para DJF

