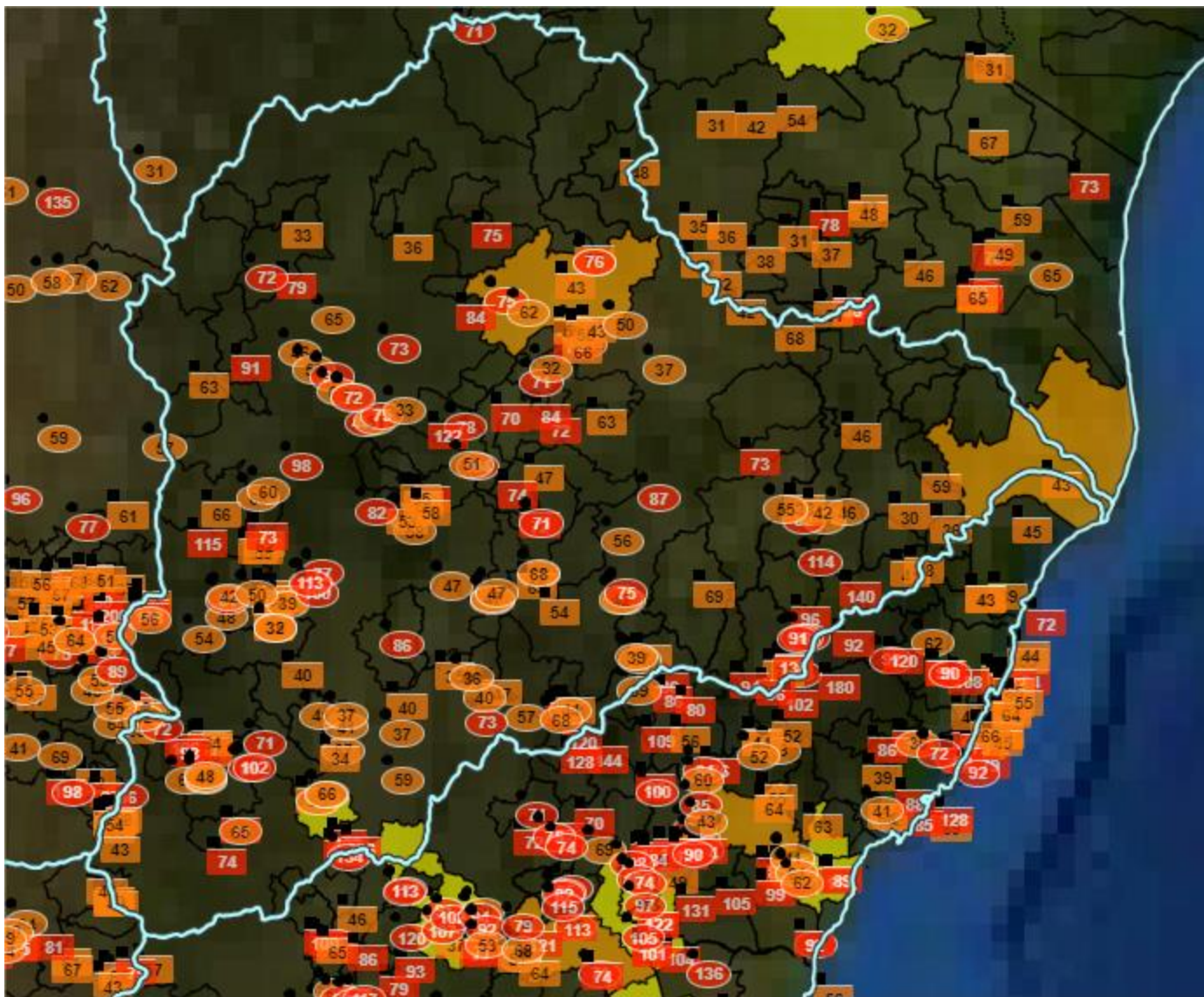


Monitoramento e Previsões de chuva para a Bacia do Rio Doce

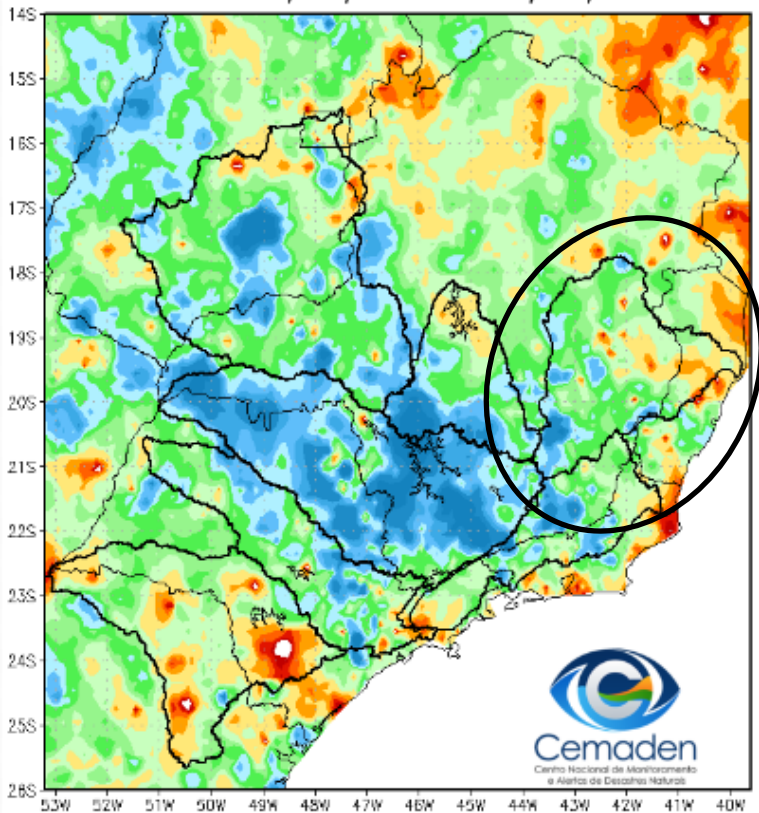


Precipitação acumulada nas últimas 96 horas

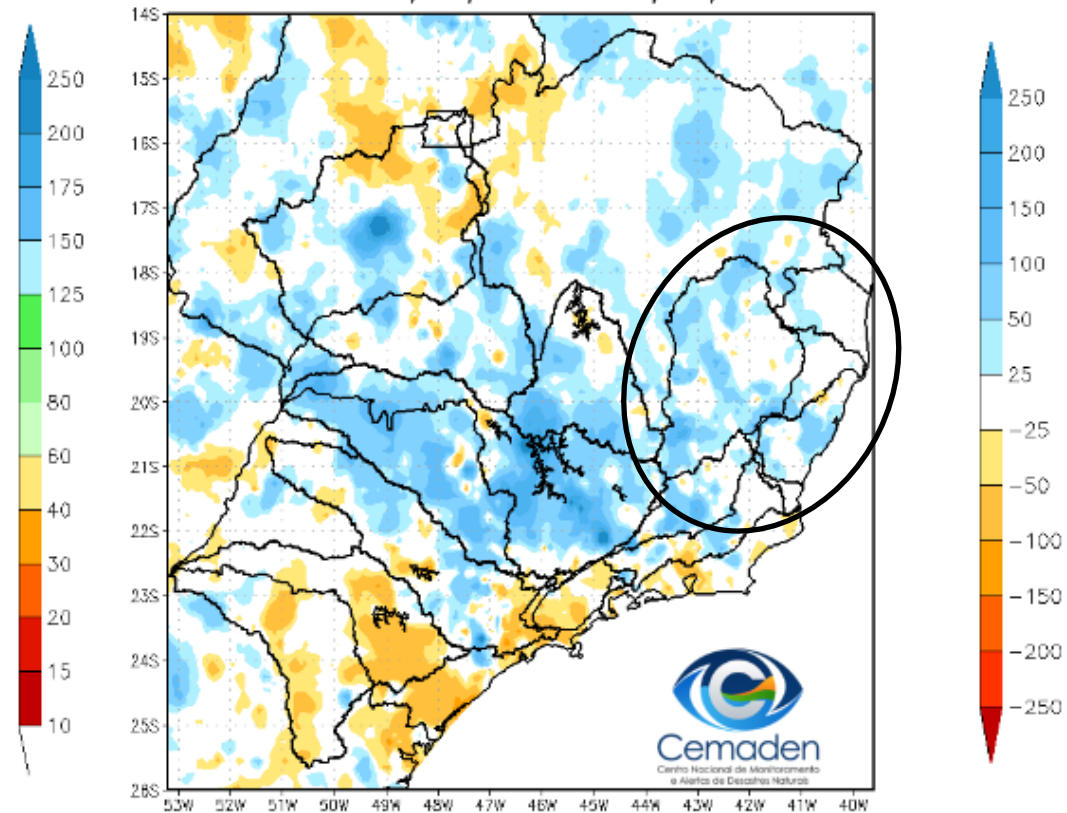


Precipitação acumulada nos últimos 15 dias

Precipitação Acumulada (mm) A.S.
Período: 09/01/2023 a 24/01/2023

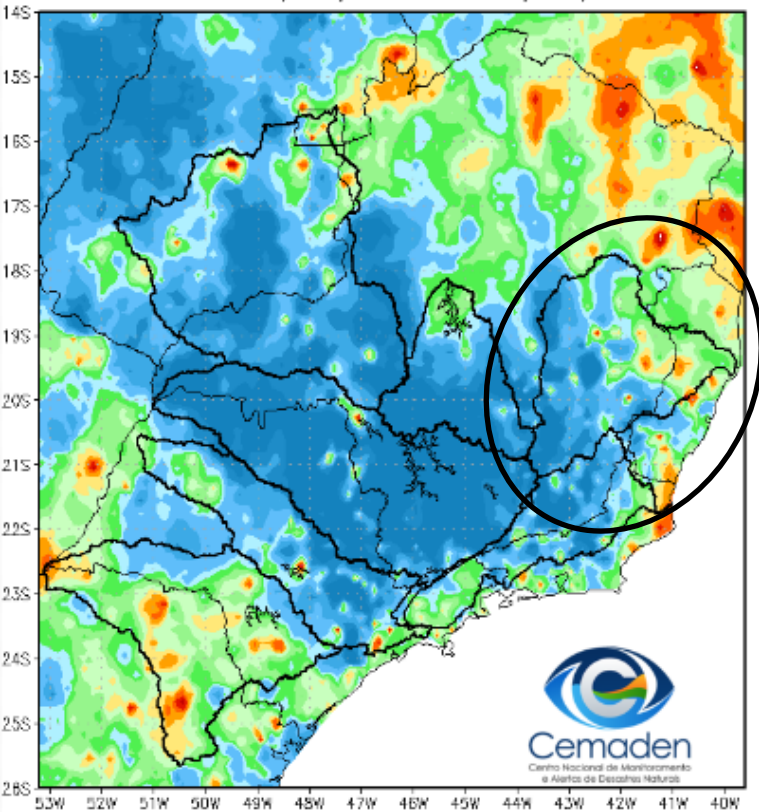


Anomalia de Precipitação (mm) A.S.
Período: 09/01/2023 a 24/01/2023

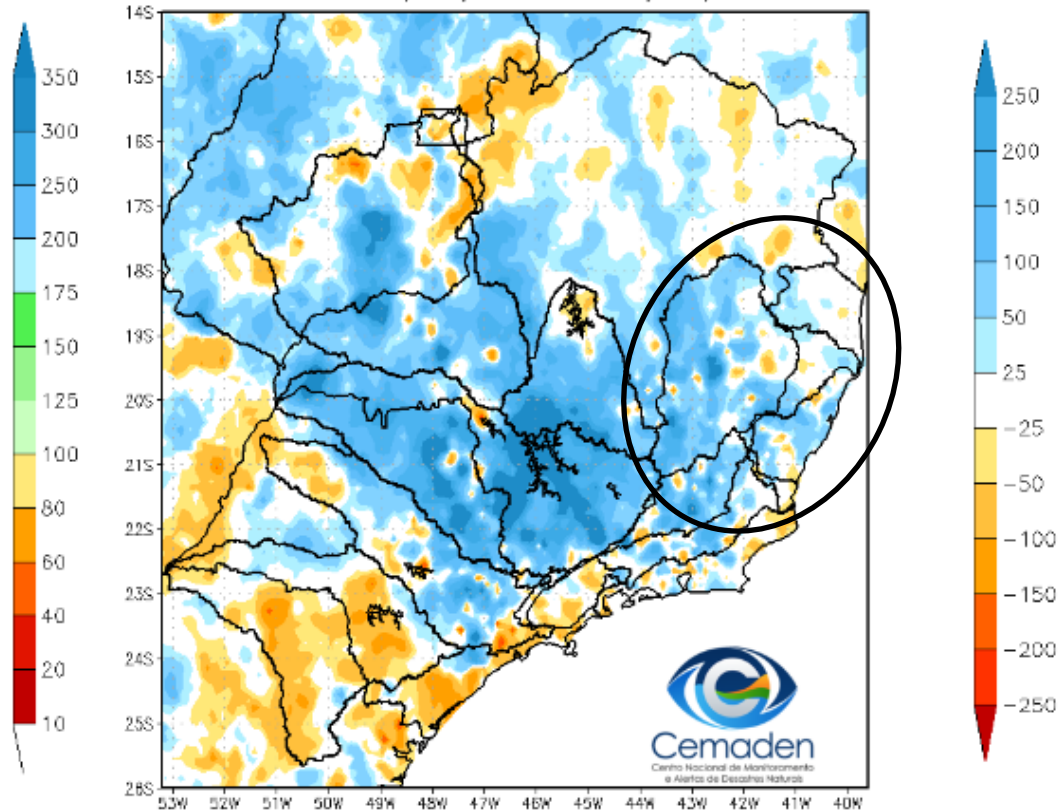


Precipitação acumulada nos últimos 30 dias

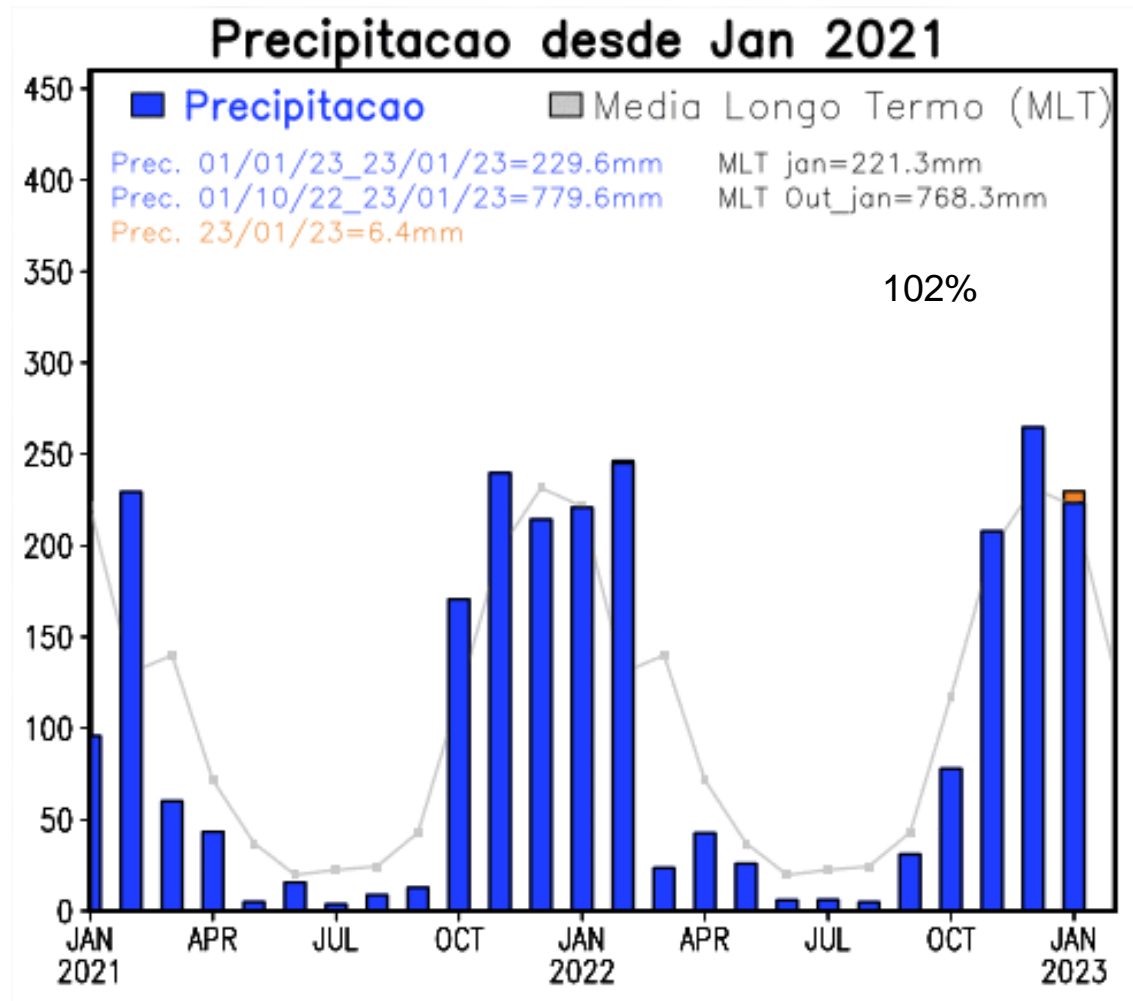
Precipitação Acumulada (mm) A.S.
Período: 25/12/2022 a 24/01/2023



Anomalia de Precipitação (mm) A.S.
Período: 25/12/2022 a 24/01/2023

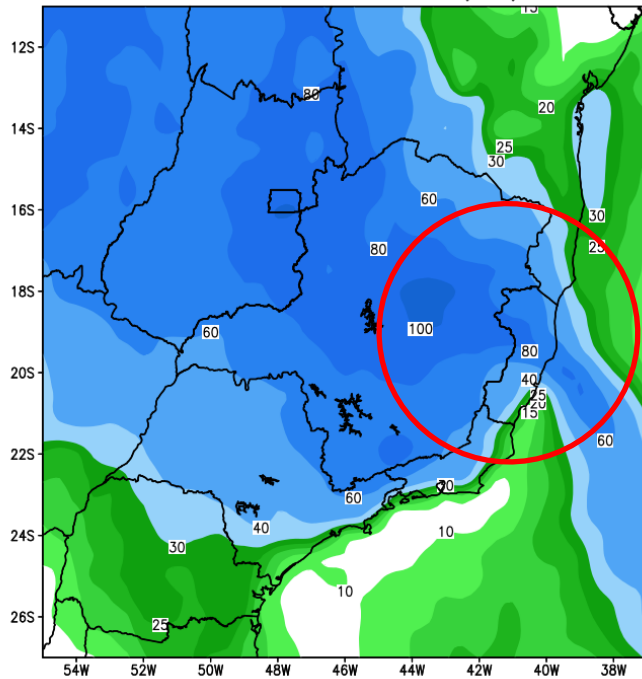


Precipitação acumulada nos últimos 24 meses

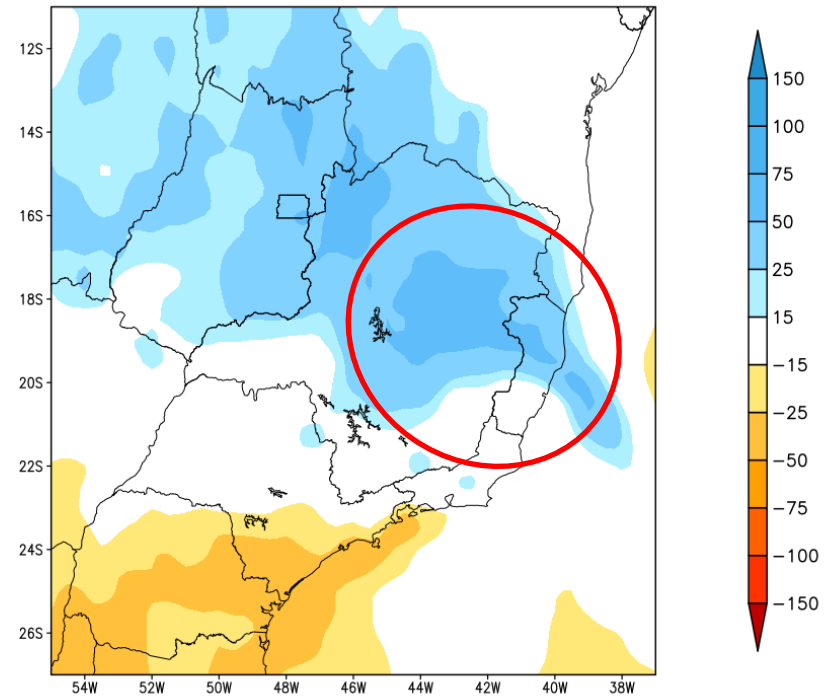


Previsão de chuva para os próximos 7 dias

GEFS / BRASIL_SE
Precipitacao acumulada 1aSem (mm)
Previsao das 00Z dia 25/01/2023



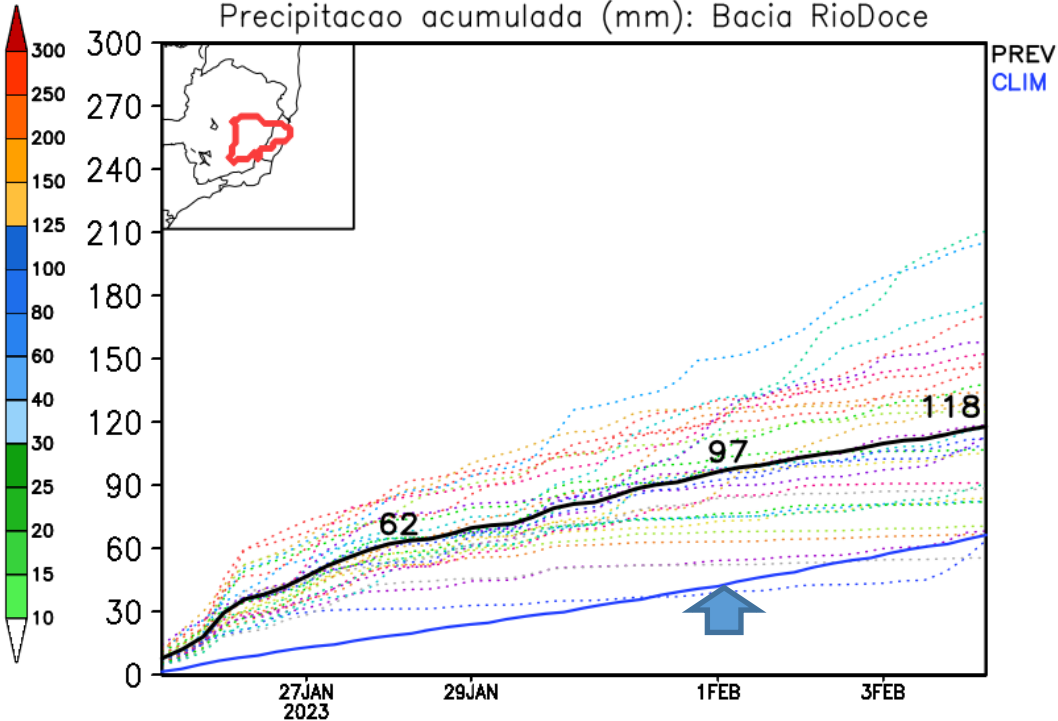
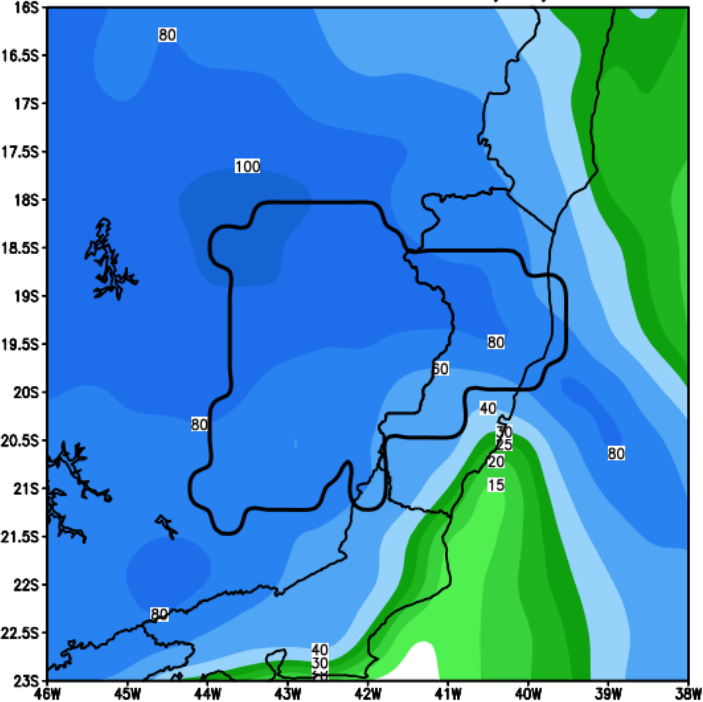
Anomalia de Precipitacao BR_SE (mm)
Periodo: 2023012500 a 2023020100



Fonte: GFS/NOAA

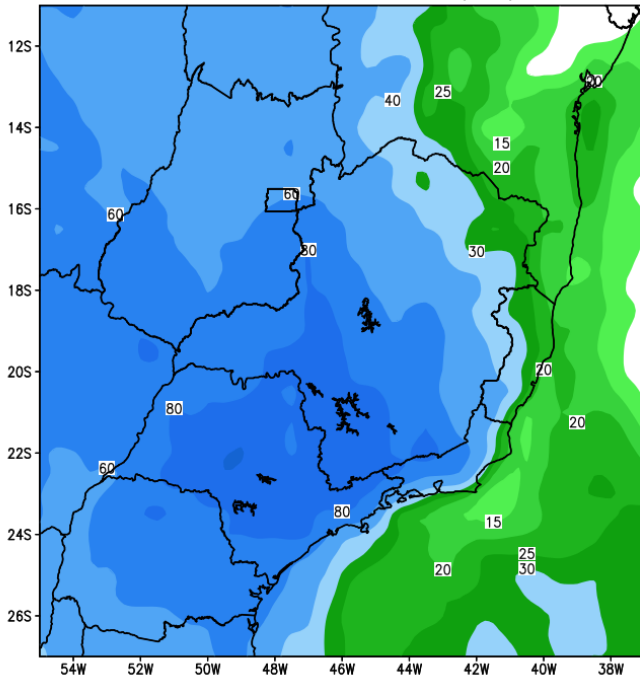
Bacia do rio Doce

GEFS / Bacia do Rio Doce
Precipitacao acumulada em 7 dias (mm)
Previsao das 00Z dia 25/01/2023

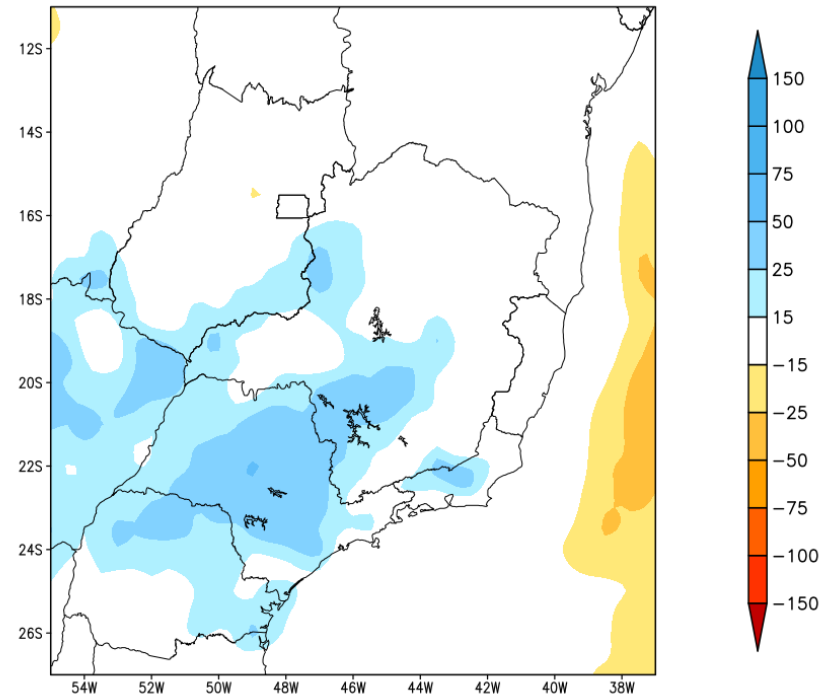


Tendência para a 2ª Semana

GEFS / BRASIL_SE
Precipitacao acumulada 2aSem (mm)
Previsao das 00Z dia 25/01/2023

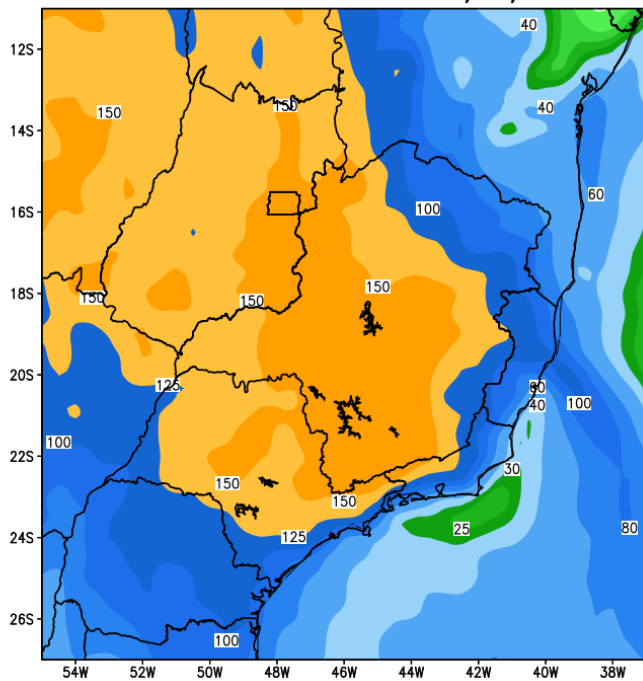


Anomalia de Precipitacao BR SE (mm)
Periodo: 2023020200 a 2023020800

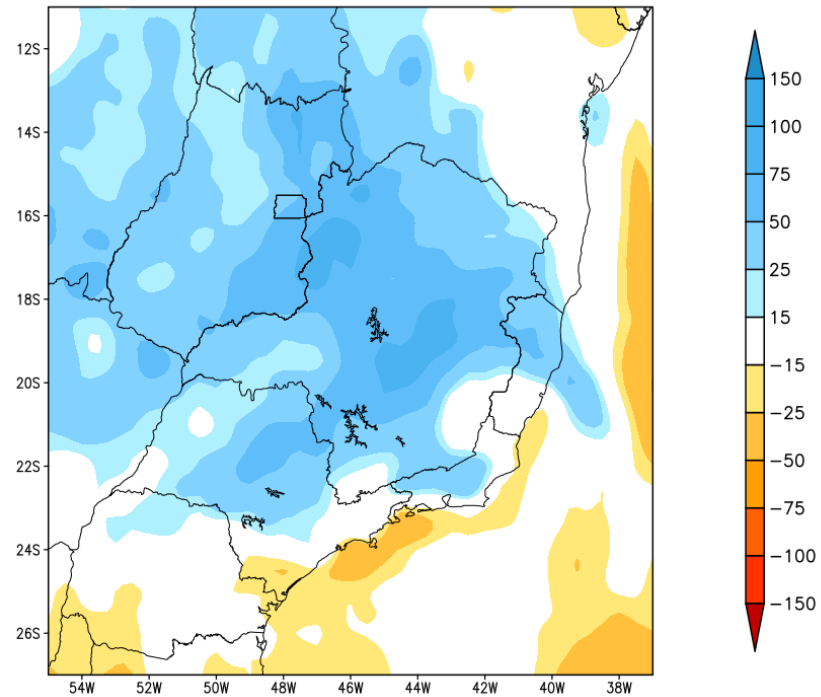


Tendência para as duas próximas semanas

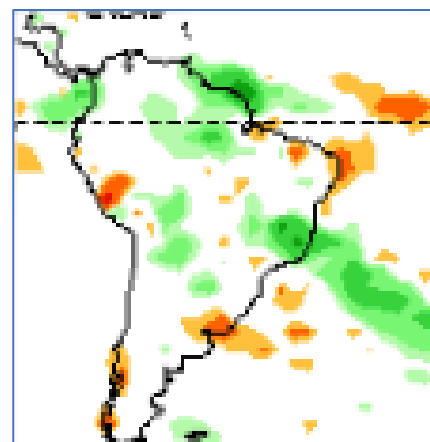
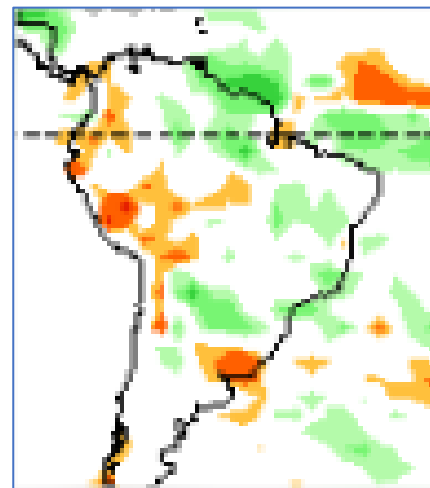
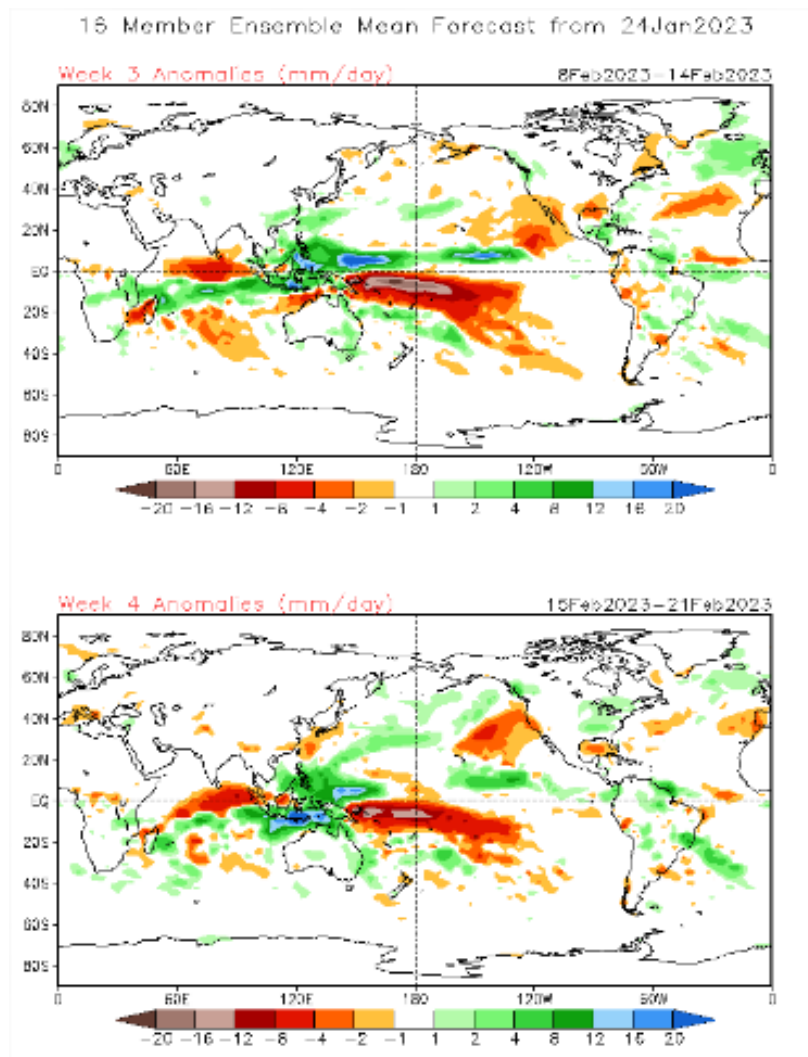
GEFS / BRASIL_SE
Precipitacao acumulada 14dias (mm)
Previsao das 00Z dia 25/01/2023



Anomalia de Precipitacao BR SE (mm)
Periodo: 2023012500 a 2023020800

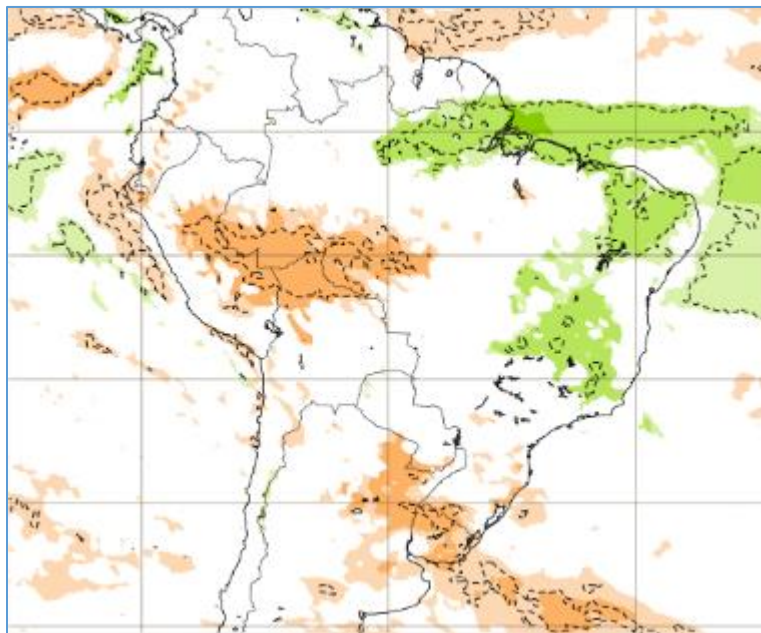


Tendência 3a e 4a semanas

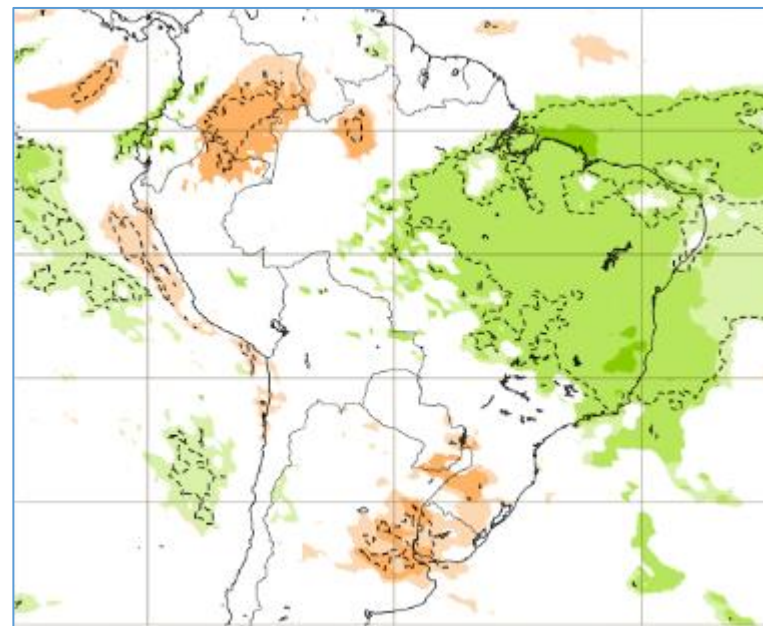


Tendência para 3ª e 4ª semanas

06-13/02



13-20/02



Previsão sazonal de Chuva FMA

