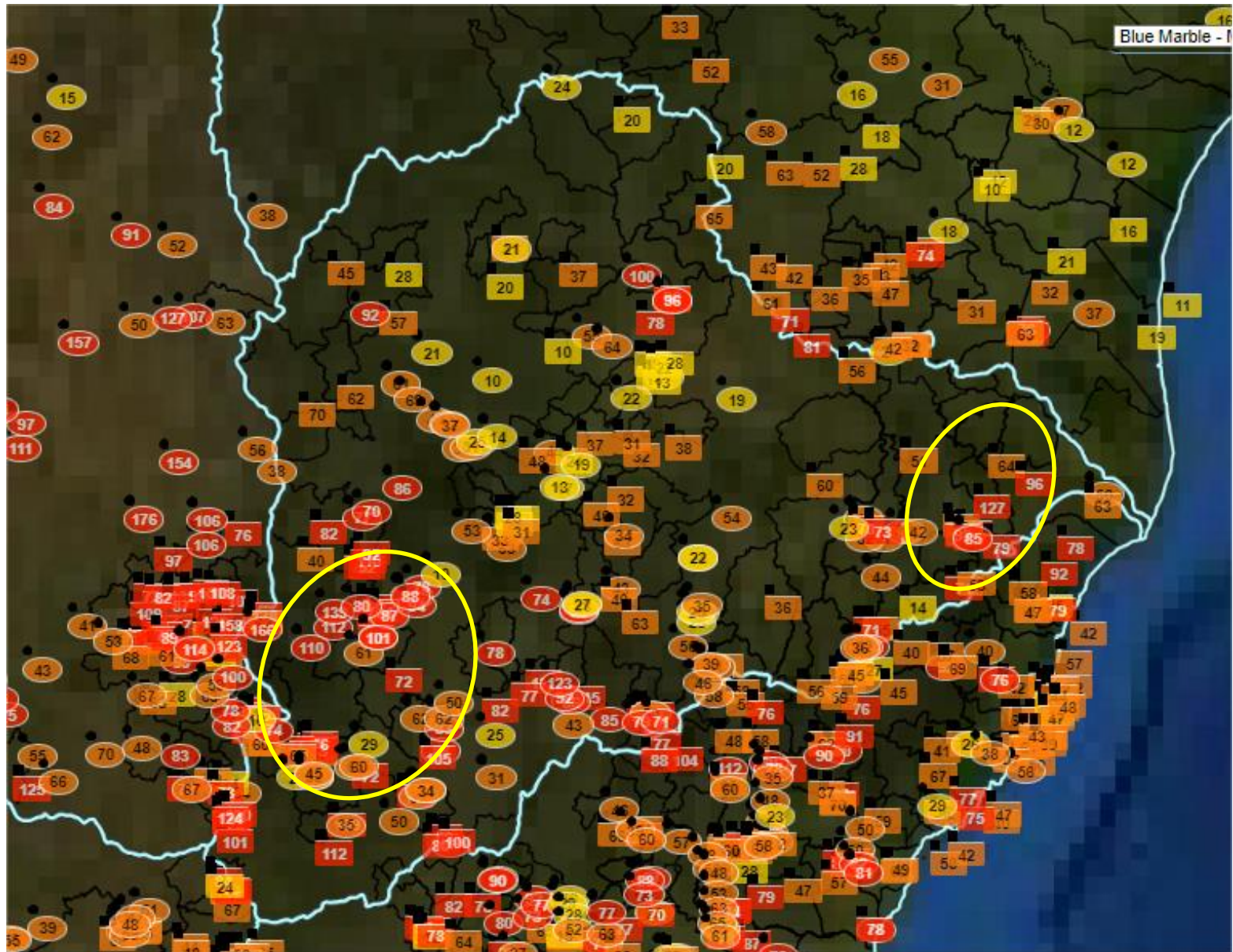


# Monitoramento e Previsões de chuva para a Bacia do Rio Doce

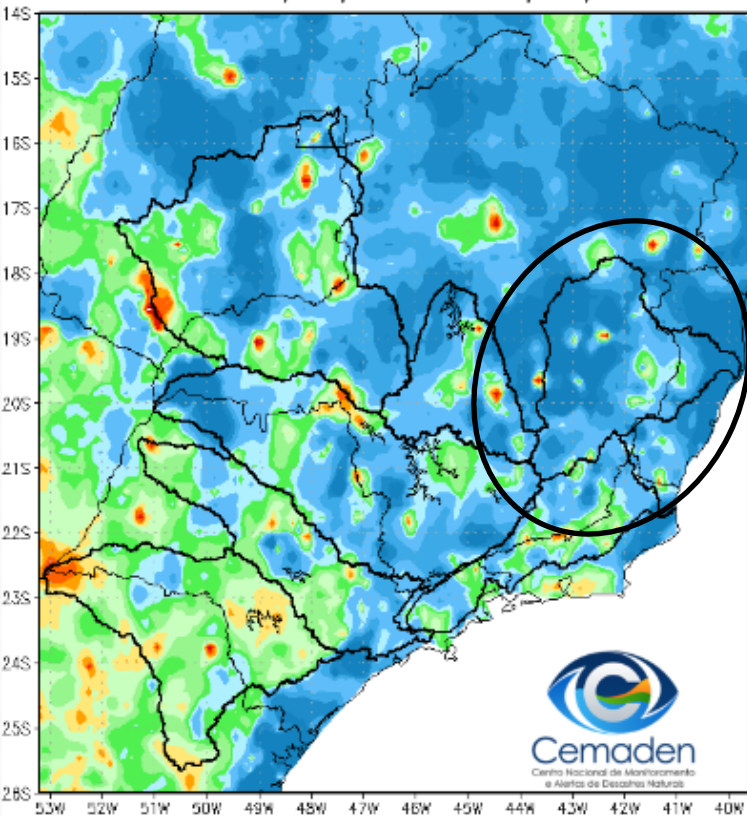


# Precipitação acumulada nas últimas 72 horas

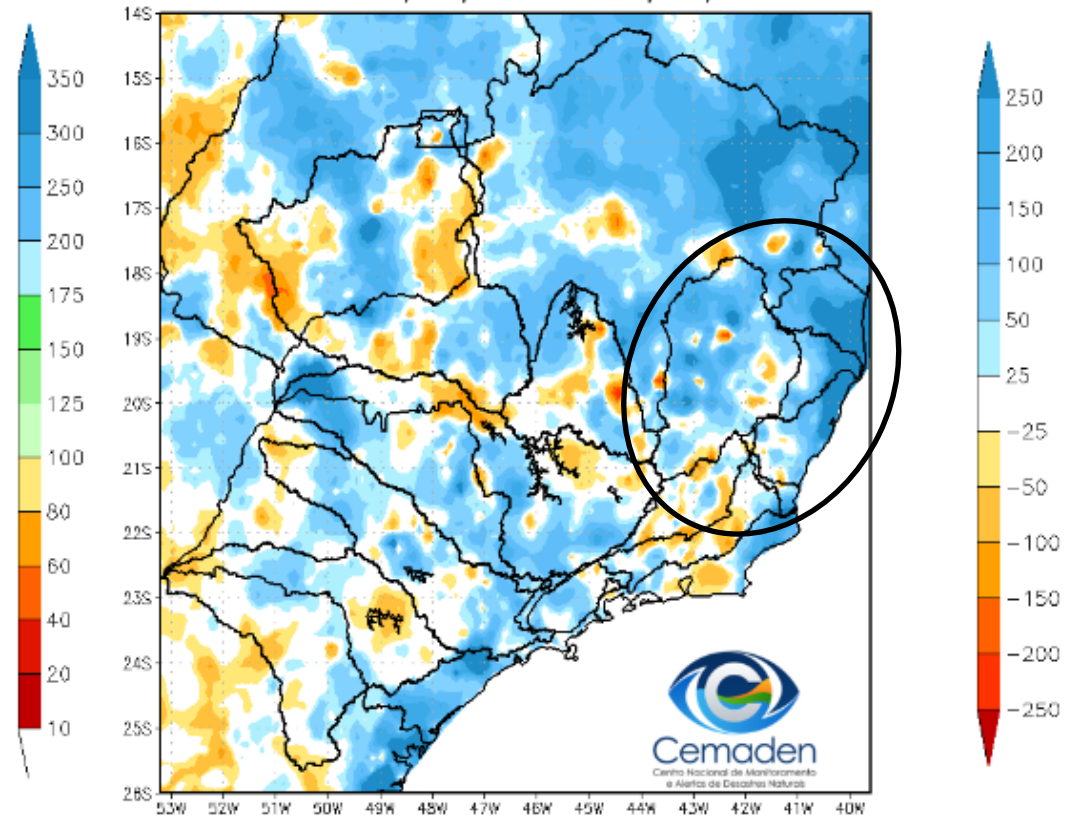


# Precipitação acumulada nos últimos 30 dias

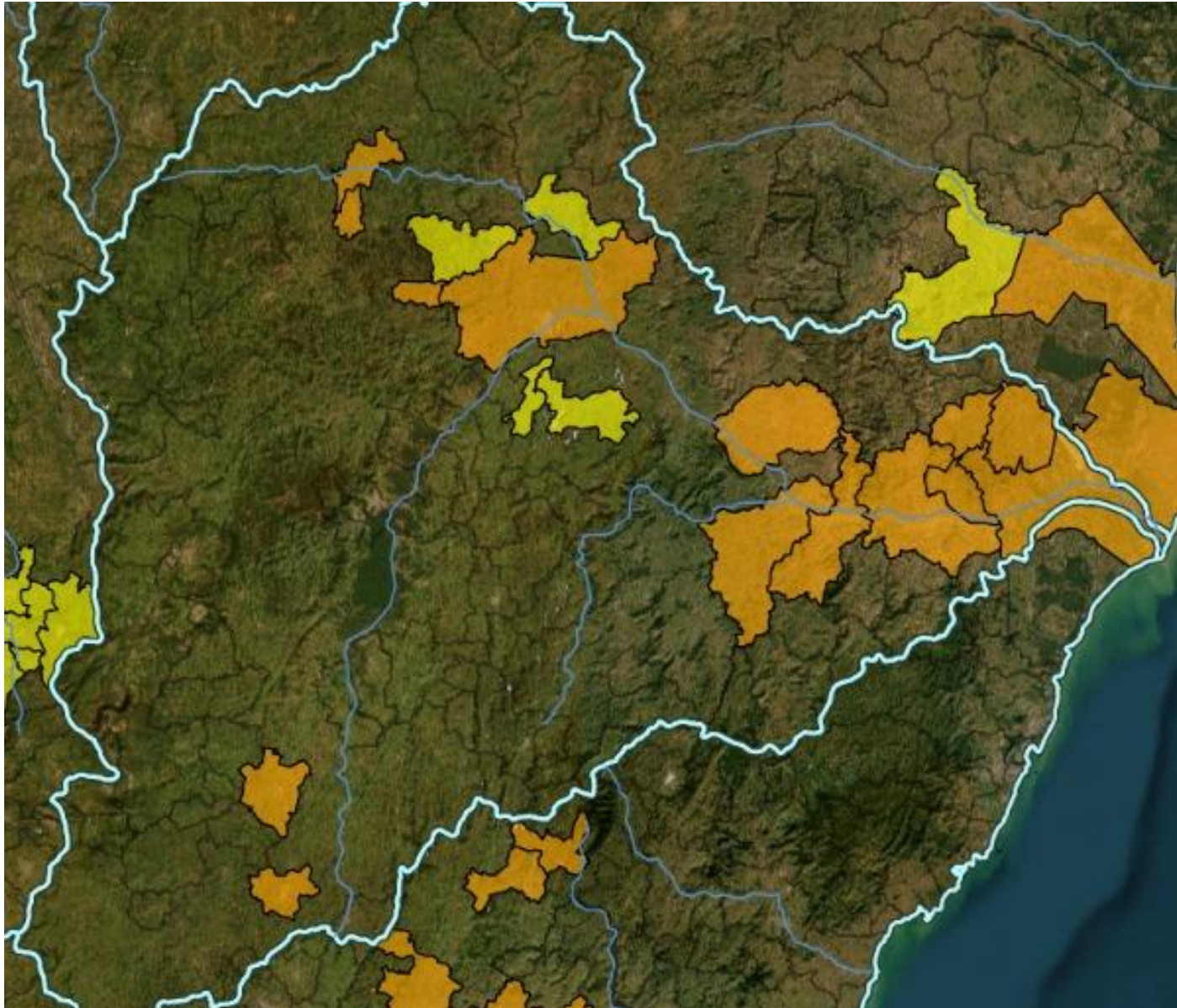
Precipitação Acumulada (mm) A.S.  
Período: 21/11/2022 a 21/12/2022



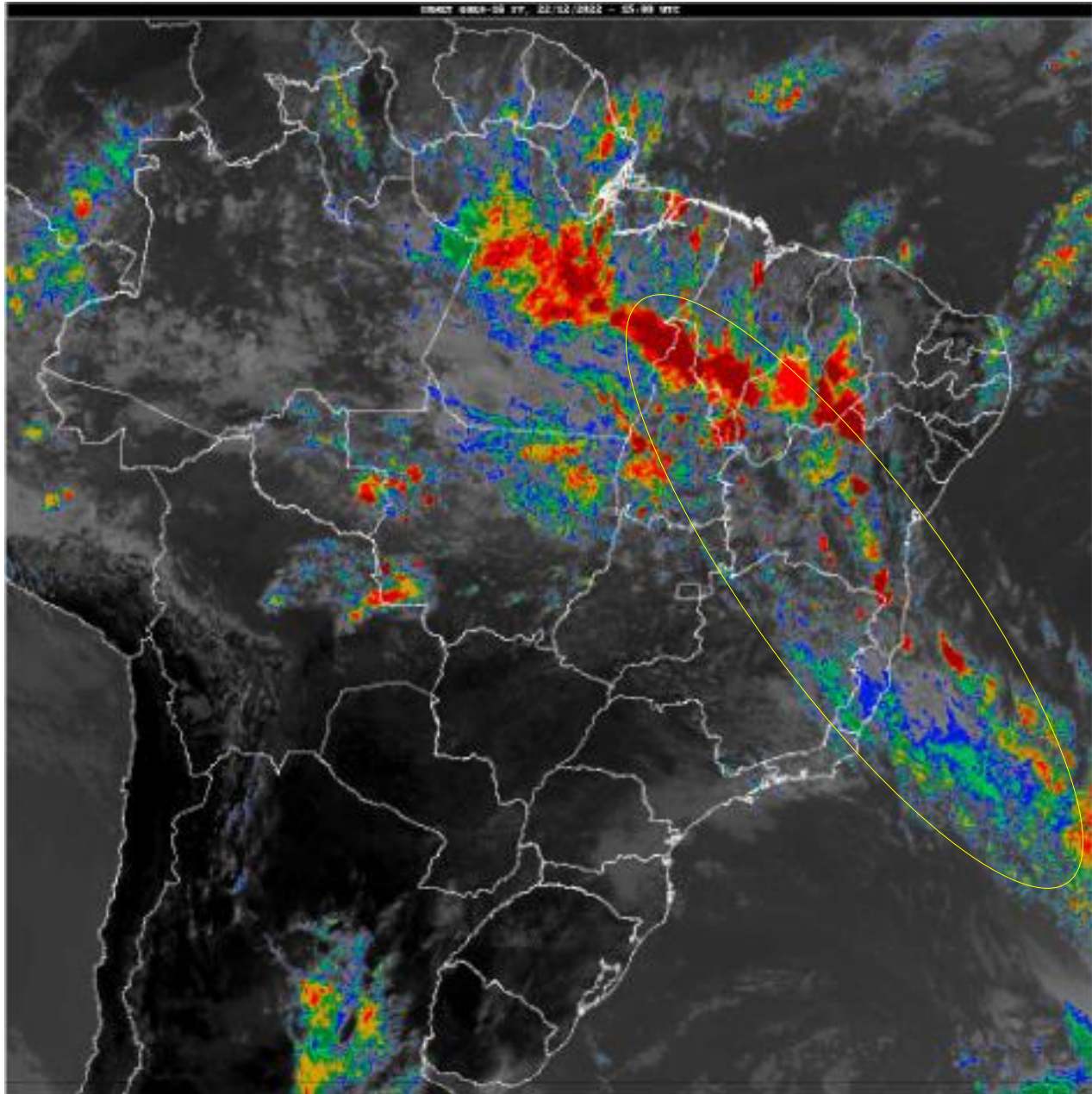
Anomalia de Precipitação (mm) A.S.  
Período: 21/11/2022 a 21/12/2022



## Municípios com alerta vigente

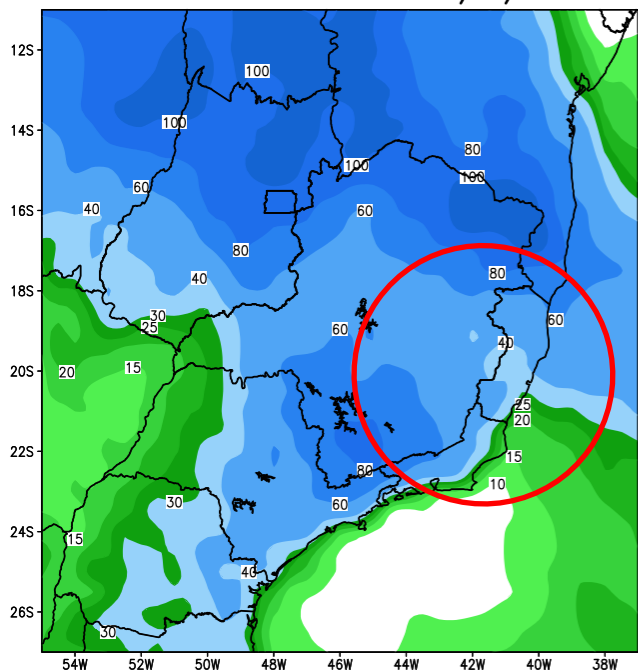


# Situação meteorológica atual

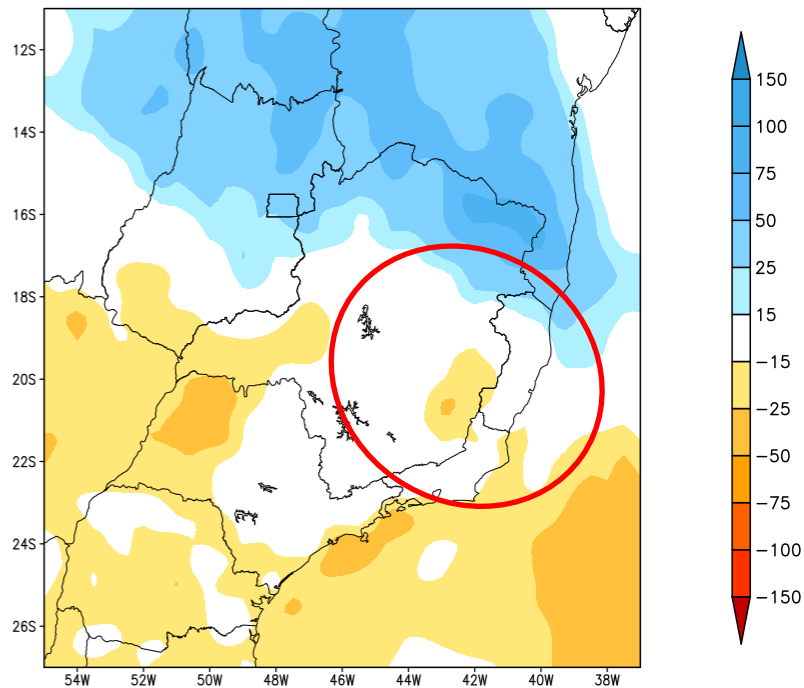


# Previsão de chuva para os próximos 7 dias

GEFS / BRASIL\_SE  
Precipitacao acumulada 1aSem (mm)  
Previsao das 00Z dia 22/12/2022



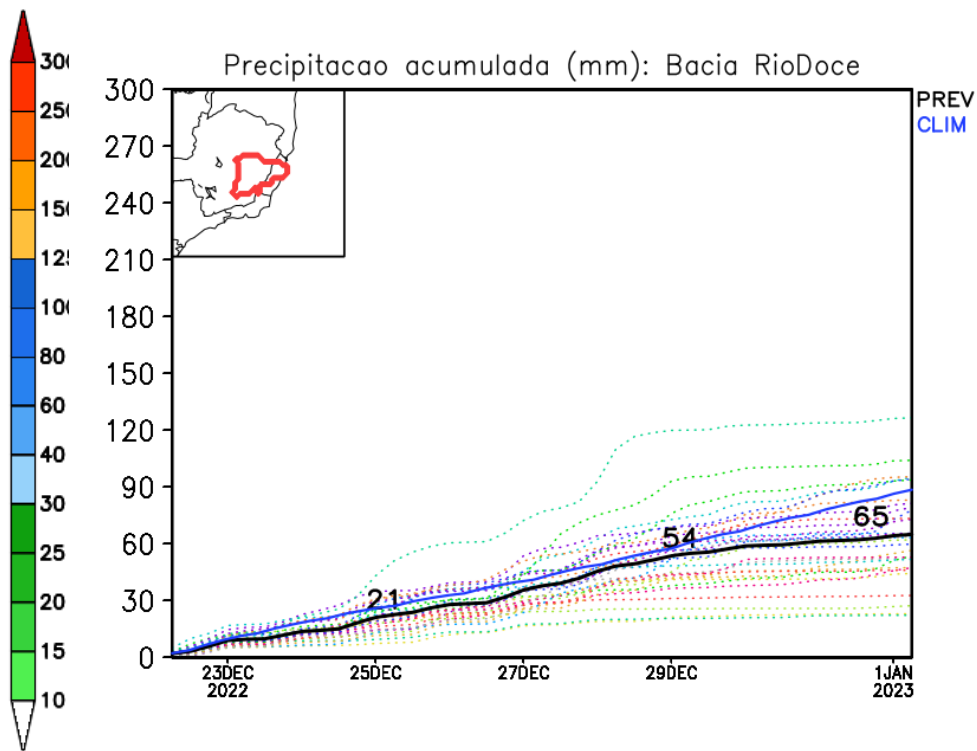
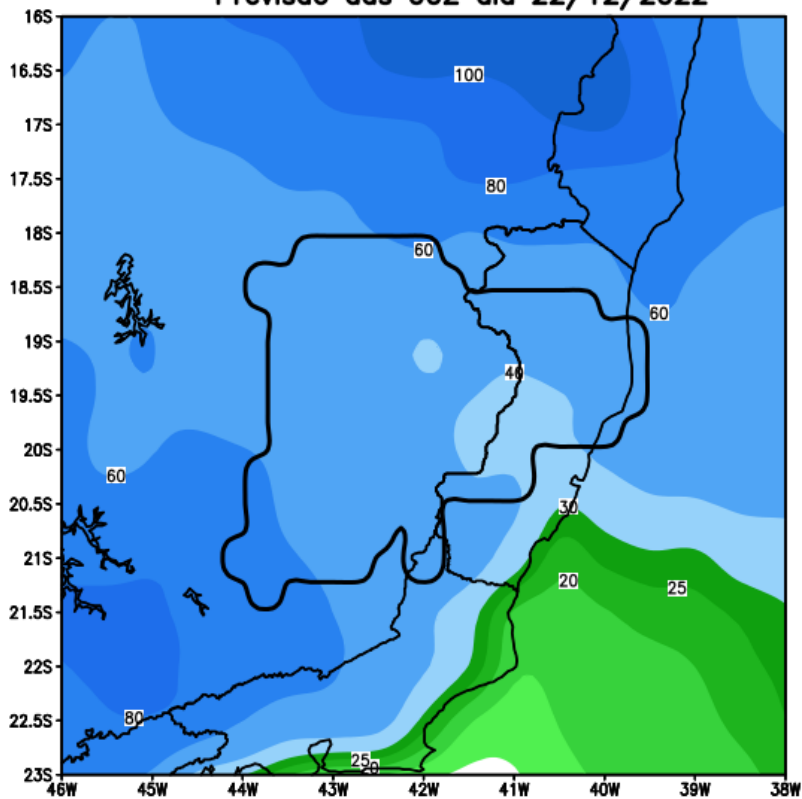
Anomalia de Precipitacao BR\_SE (mm)  
Periodo: 2022122200 a 2022122900



Fonte: GFS/NOAA

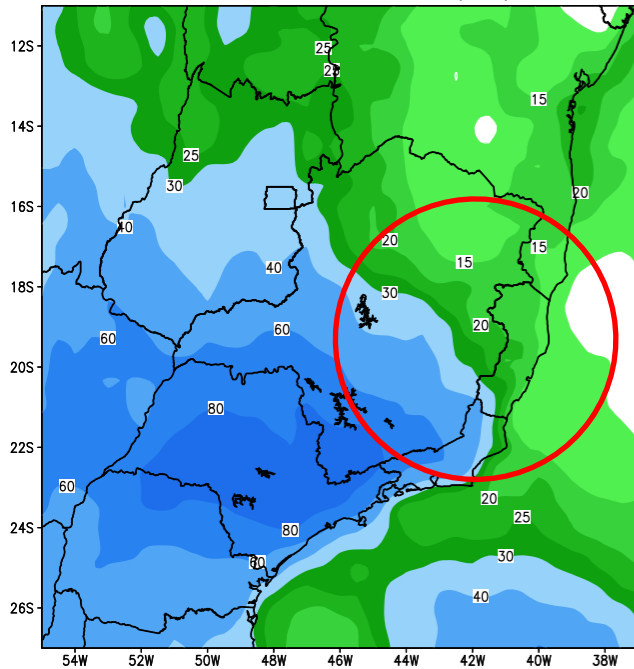
# Bacia do rio Doce

GEFS / Bacia do Rio Doce  
Precipitacao acumulada em 7 dias (mm)  
Previsao das 00Z dia 22/12/2022

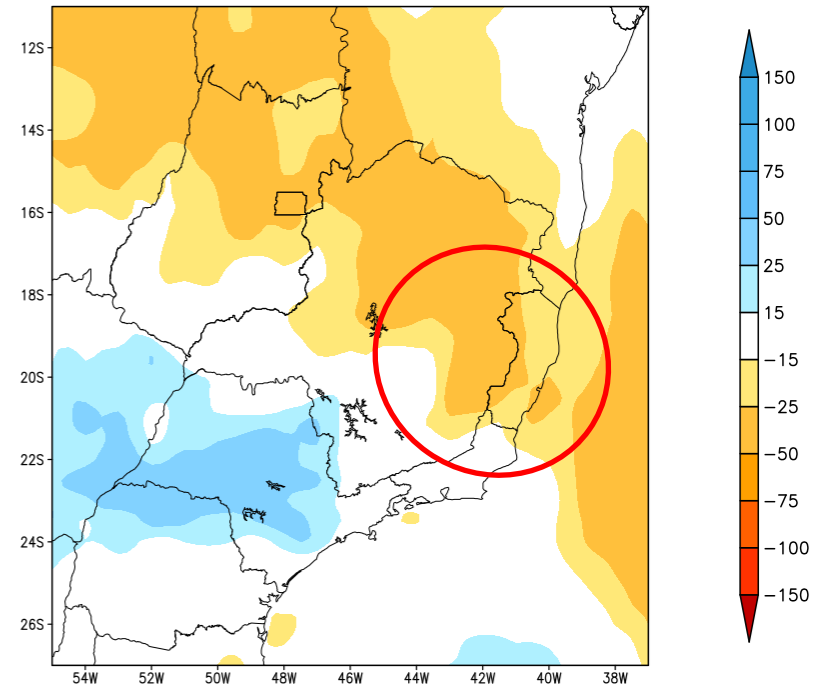


# Tendência para a 2ª Semana

GEFS / BRASIL\_SE  
Precipitacao acumulada 2aSem (mm)  
Previsao das 00Z dia 22/12/2022



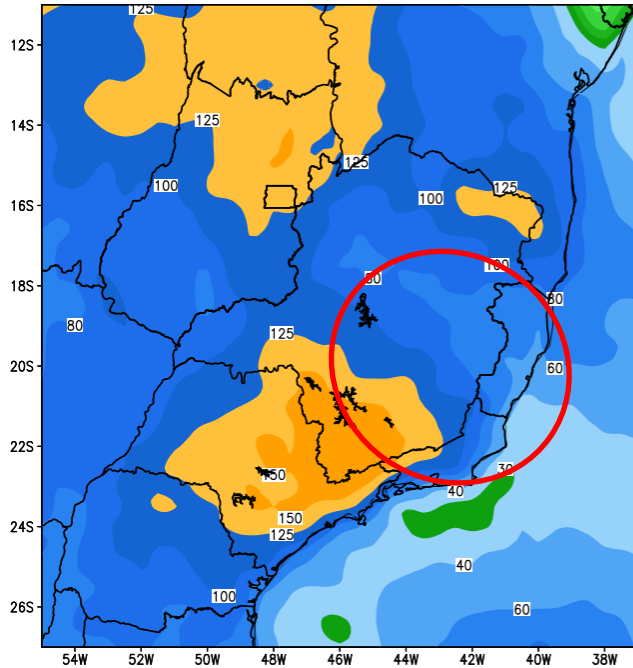
Anomalia de Precipitacao BR\_SE (mm)  
Periodo: 2022123000 a 2023010500



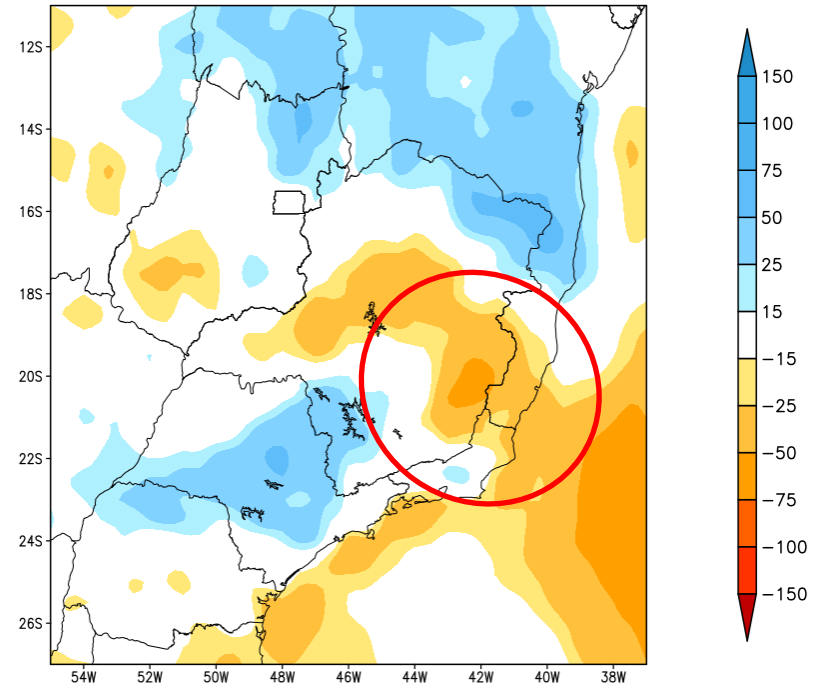


# Tendência para as duas próximas semanas

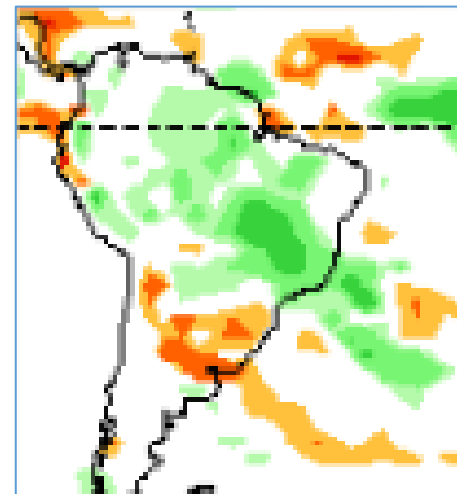
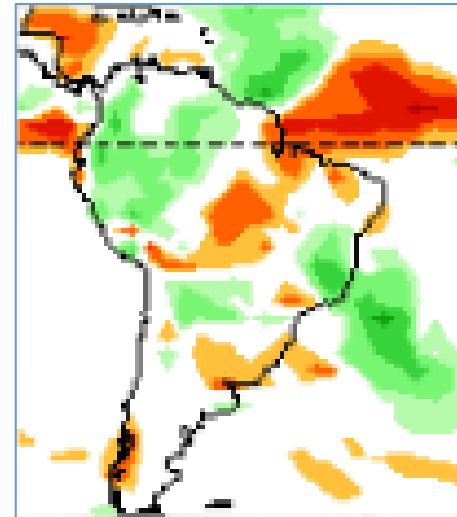
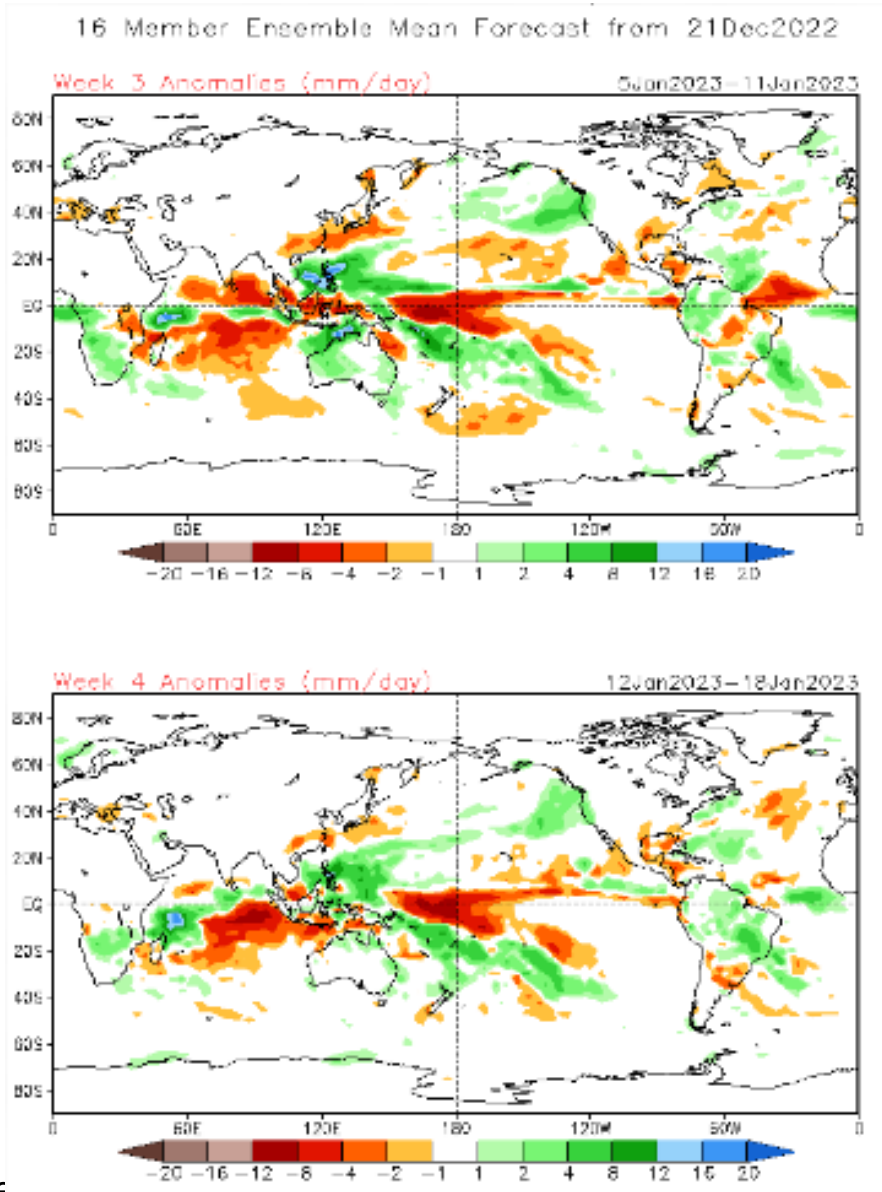
GEFS / BRASIL\_SE  
Precipitacao acumulada 14dias (mm)  
Previsao das 00Z dia 22/12/2022



Anomalia de Precipitacao BR\_SE (mm)  
Periodo: 2022122200 a 2023010500

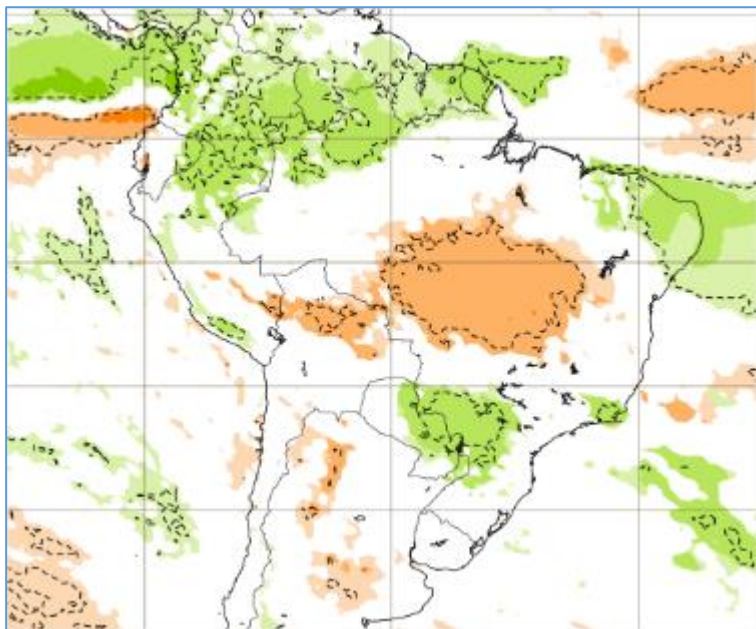


# Tendência 3a e 4a semanas



# Tendência para 3ª e 4ª semanas

02-09/01



09-16/01

