



# CEMADEN

Centro Nacional de Monitoramento e  
Alertas de Desastres Naturais

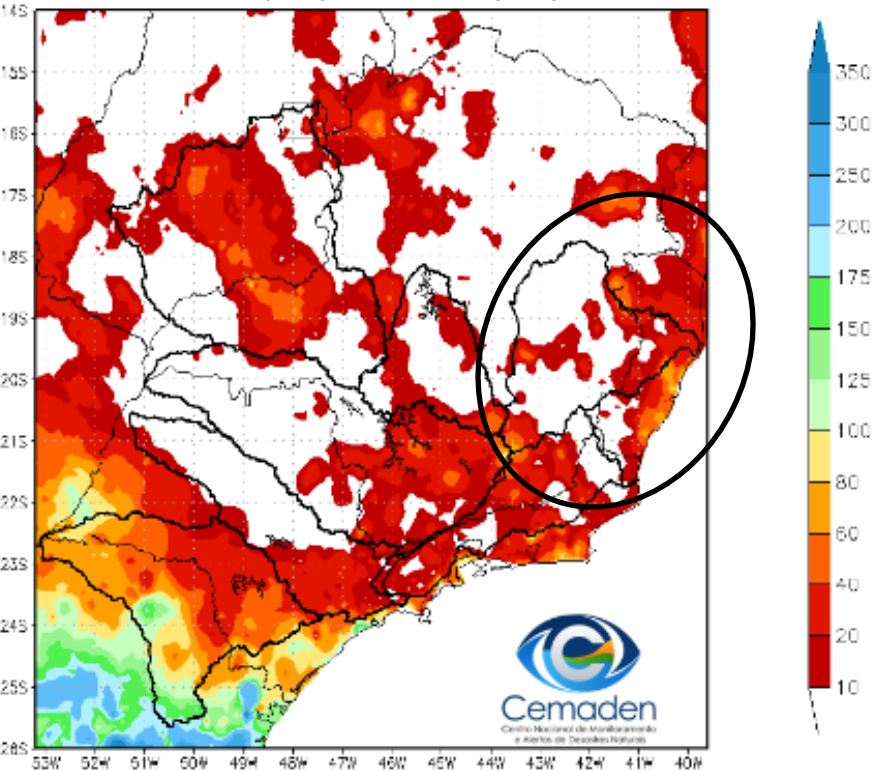
Monitoramento e Previsões  
para a  
Bacia do rio Doce

11 de Outubro de 2024

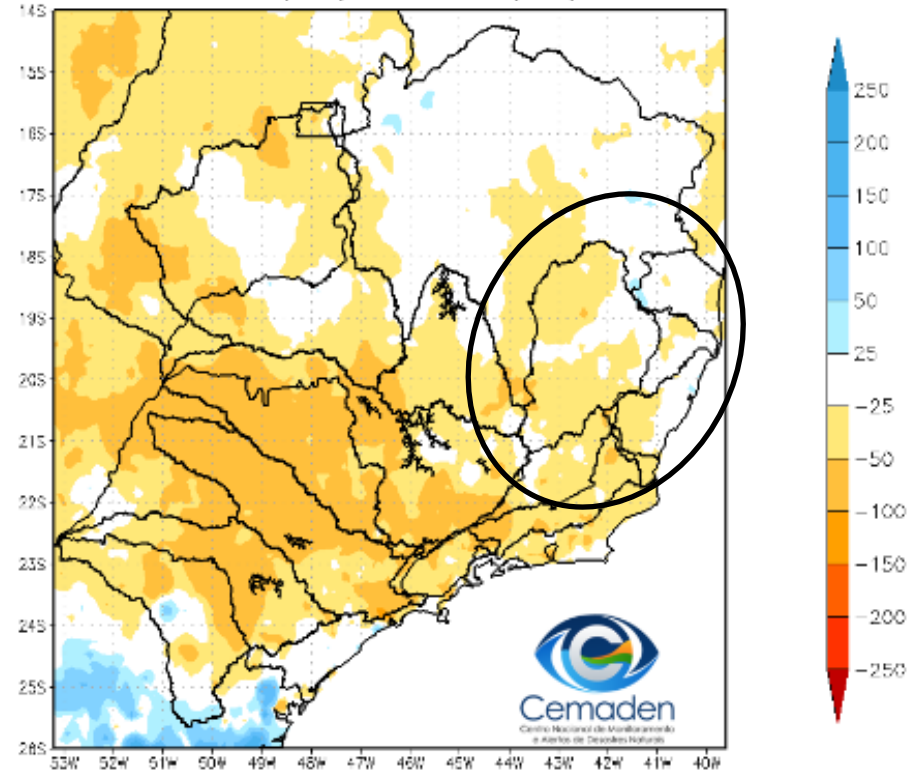


# Precipitação acumulada nos últimos 30 dias

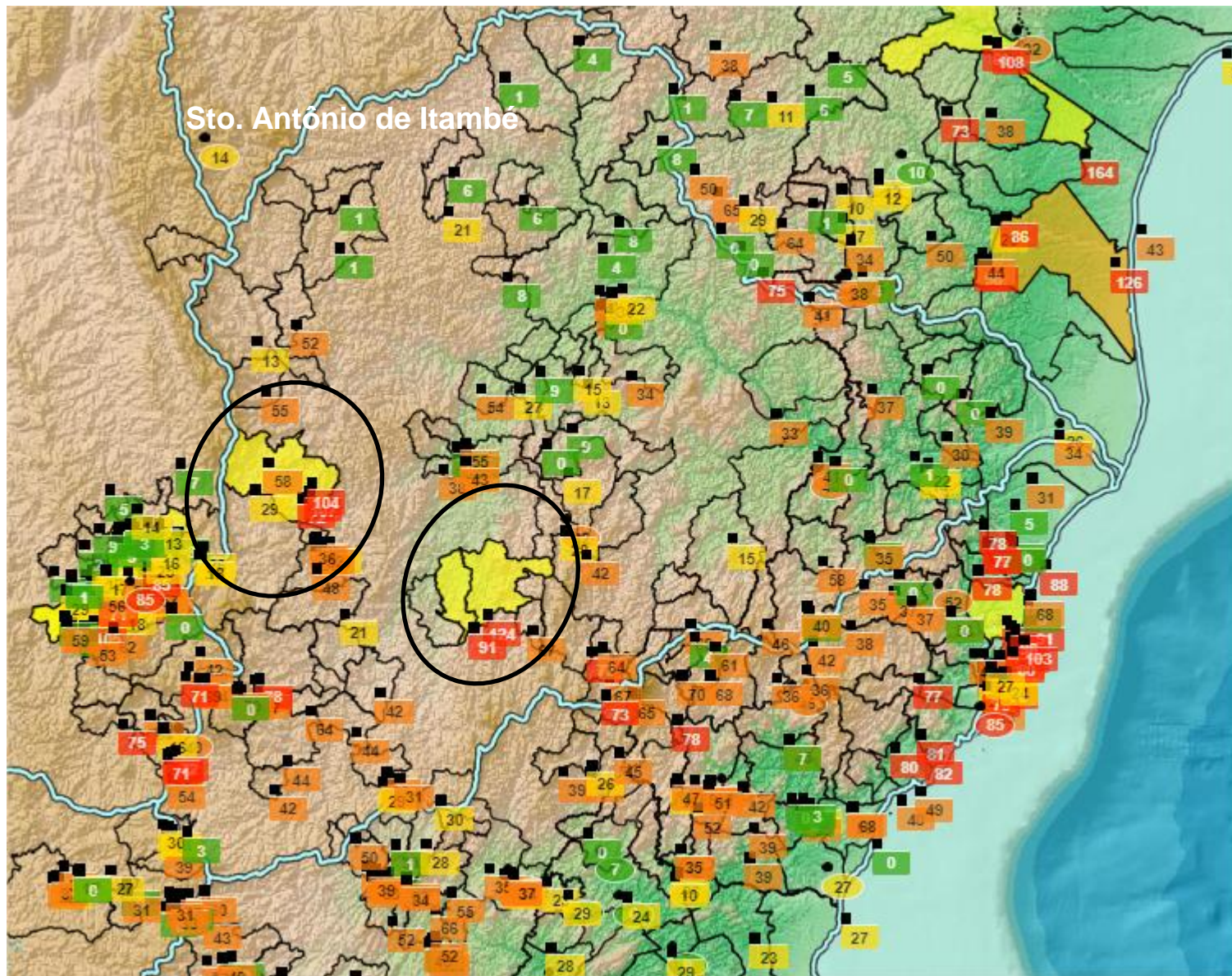
Precipitação Acumulada (mm) A.S.  
Período: 10/09/2024 a 10/10/2024



Anomalia de Precipitação (mm) A.S.  
Período: 10/09/2024 a 10/10/2024

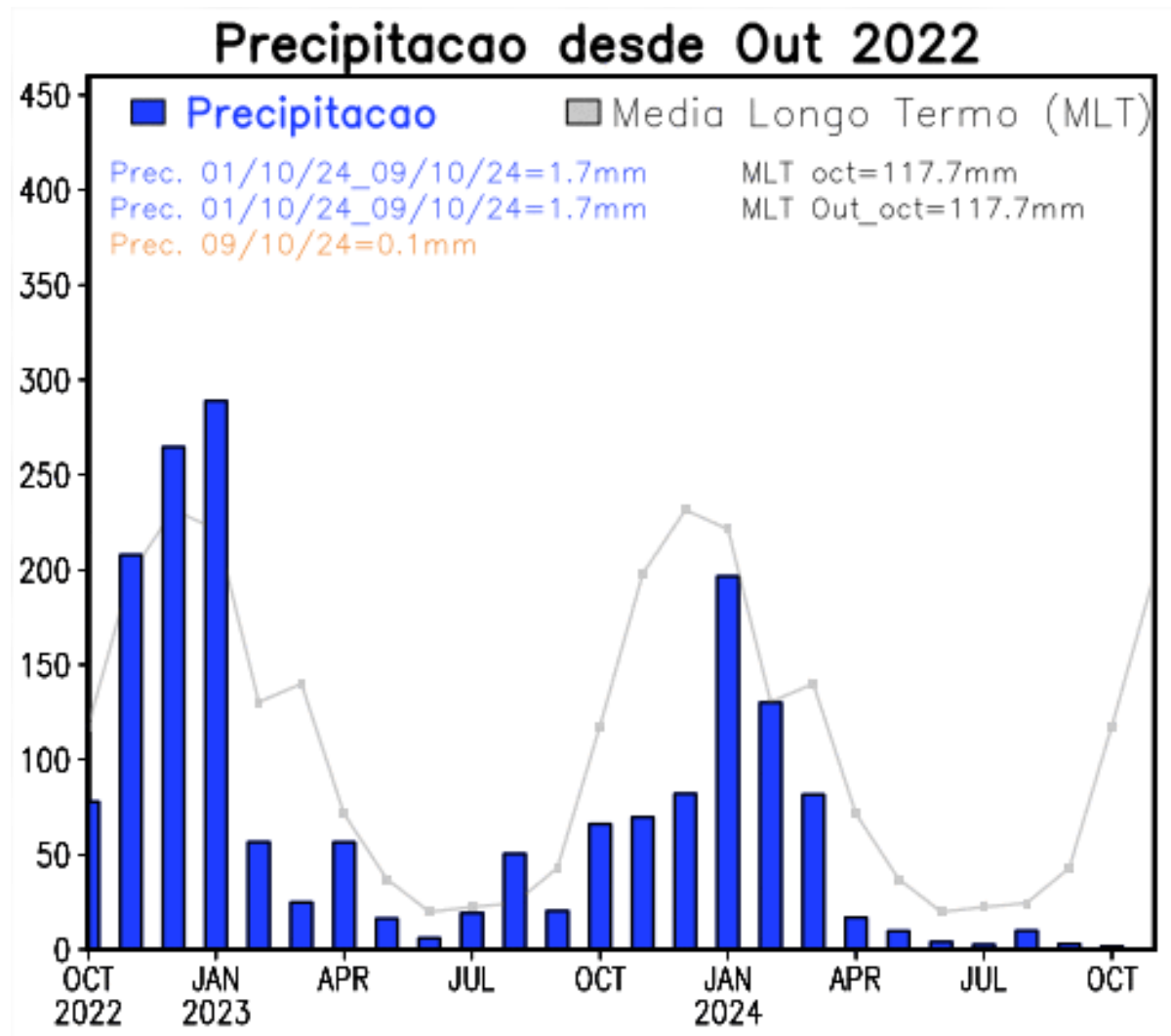


# Chuva observada nas últimas 48 horas



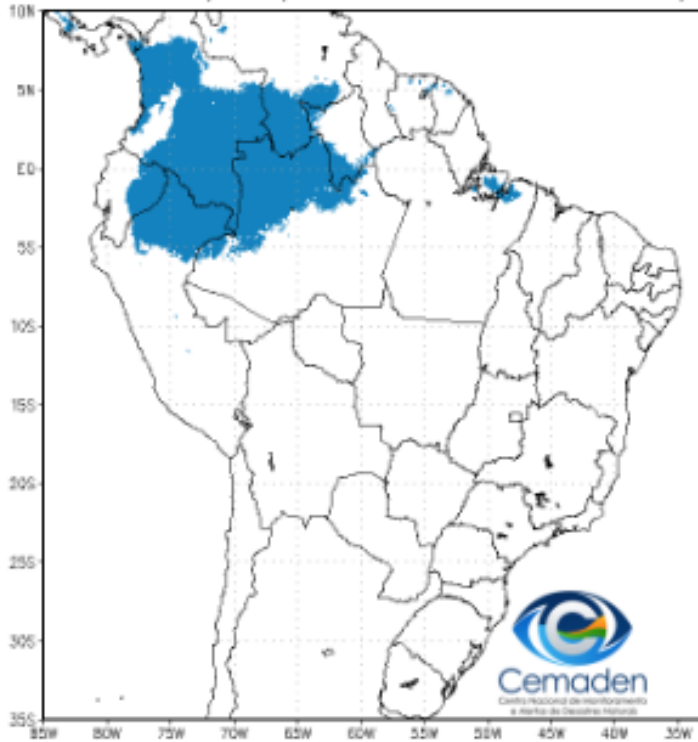
FONTE: ANA/CPRM-CEMADEN-INMET

# Precipitação acumulada nos últimos 24 meses



# Situação da Estação Chuvosa

Climatologia da Precipitação (2001–2023)  
Inferior 2 mm/dia por 4 de 5 dias Período: 10/10

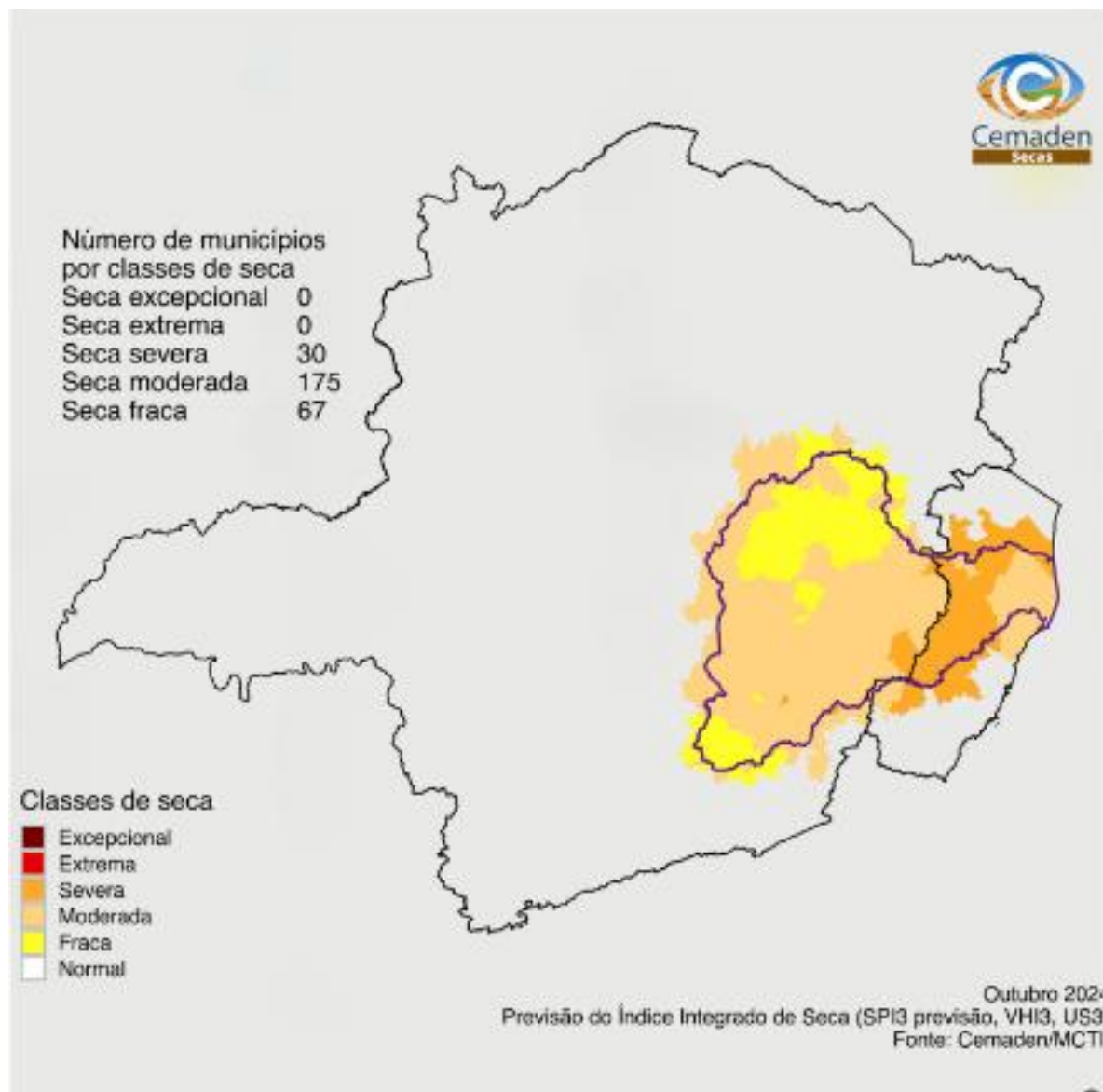


Precipitação Inferior 2 mm/dia por 4 de 5 dias  
Período: 10/10/2024



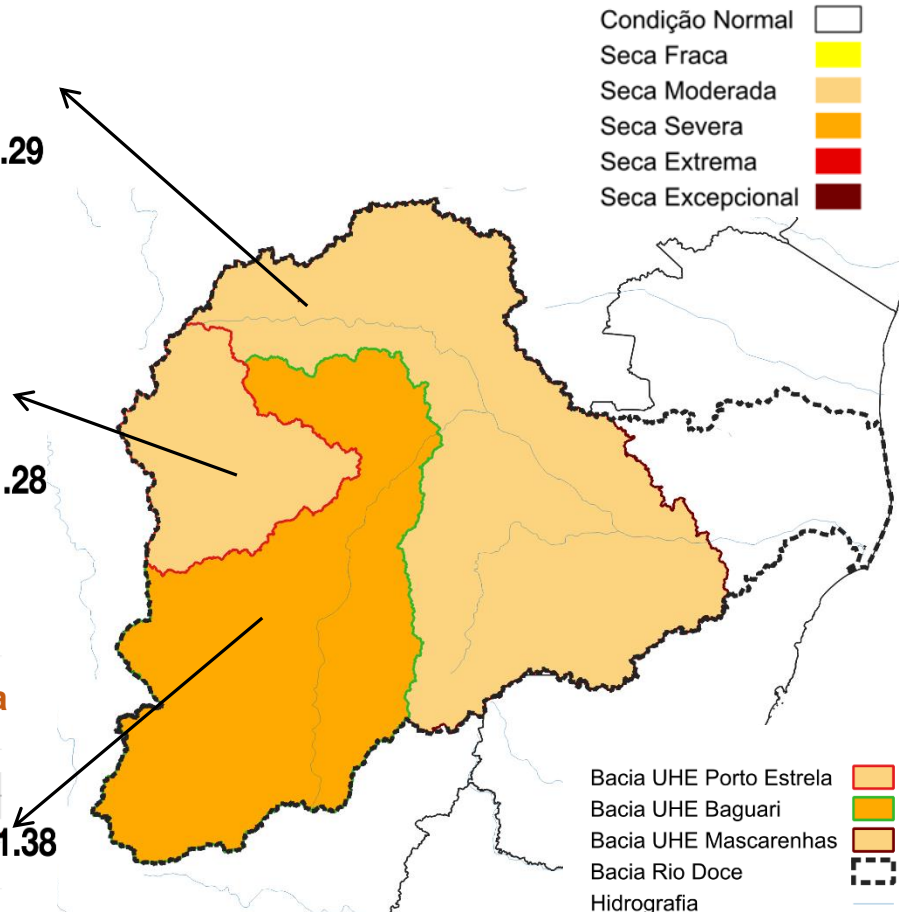
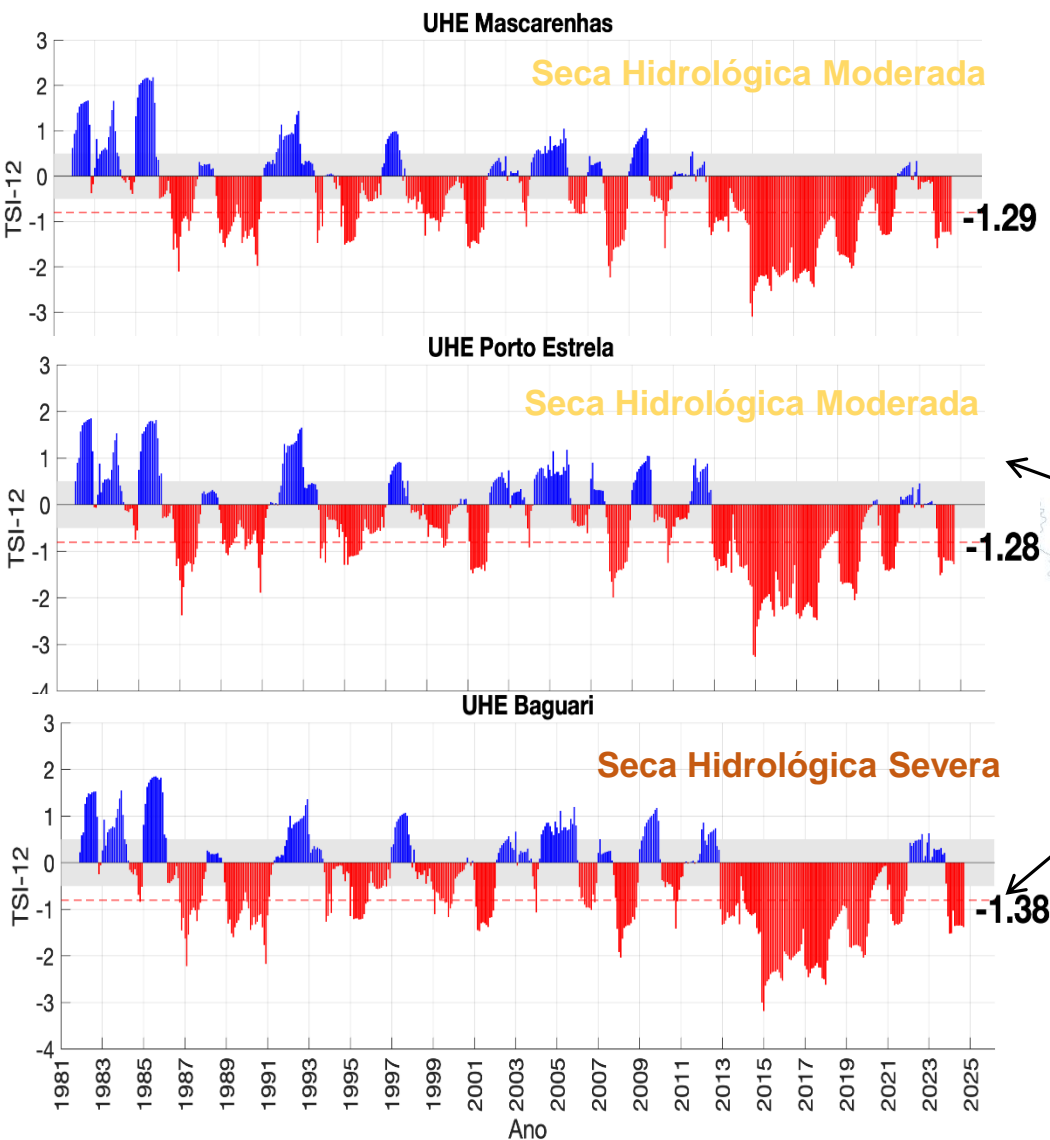
# Situação da Seca

IIS-3 Setembro 2024



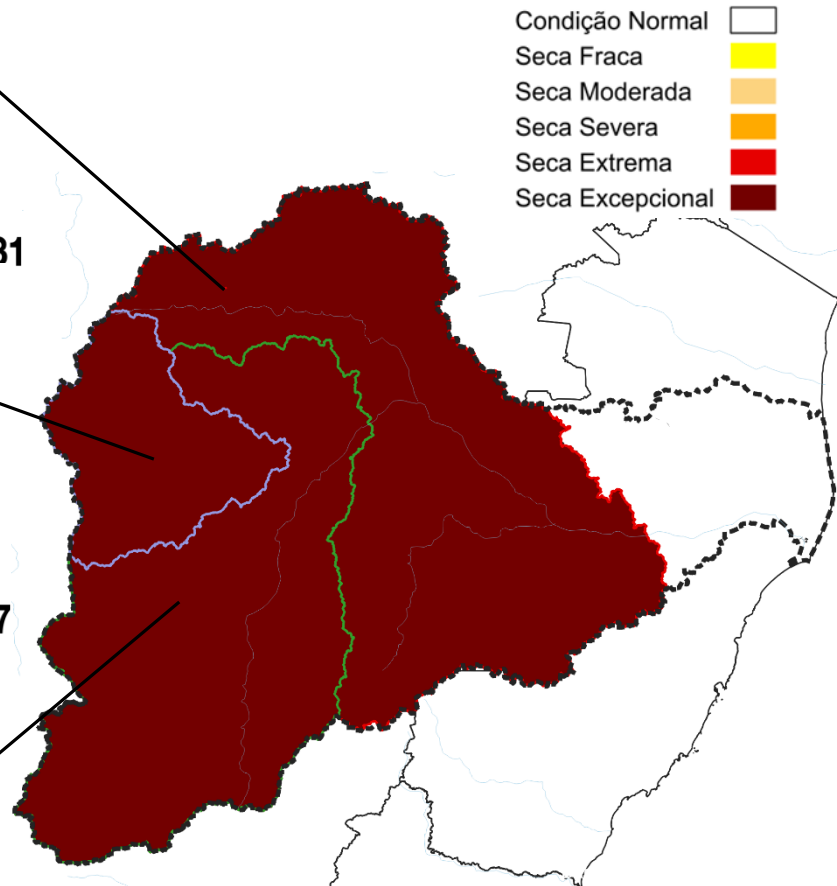
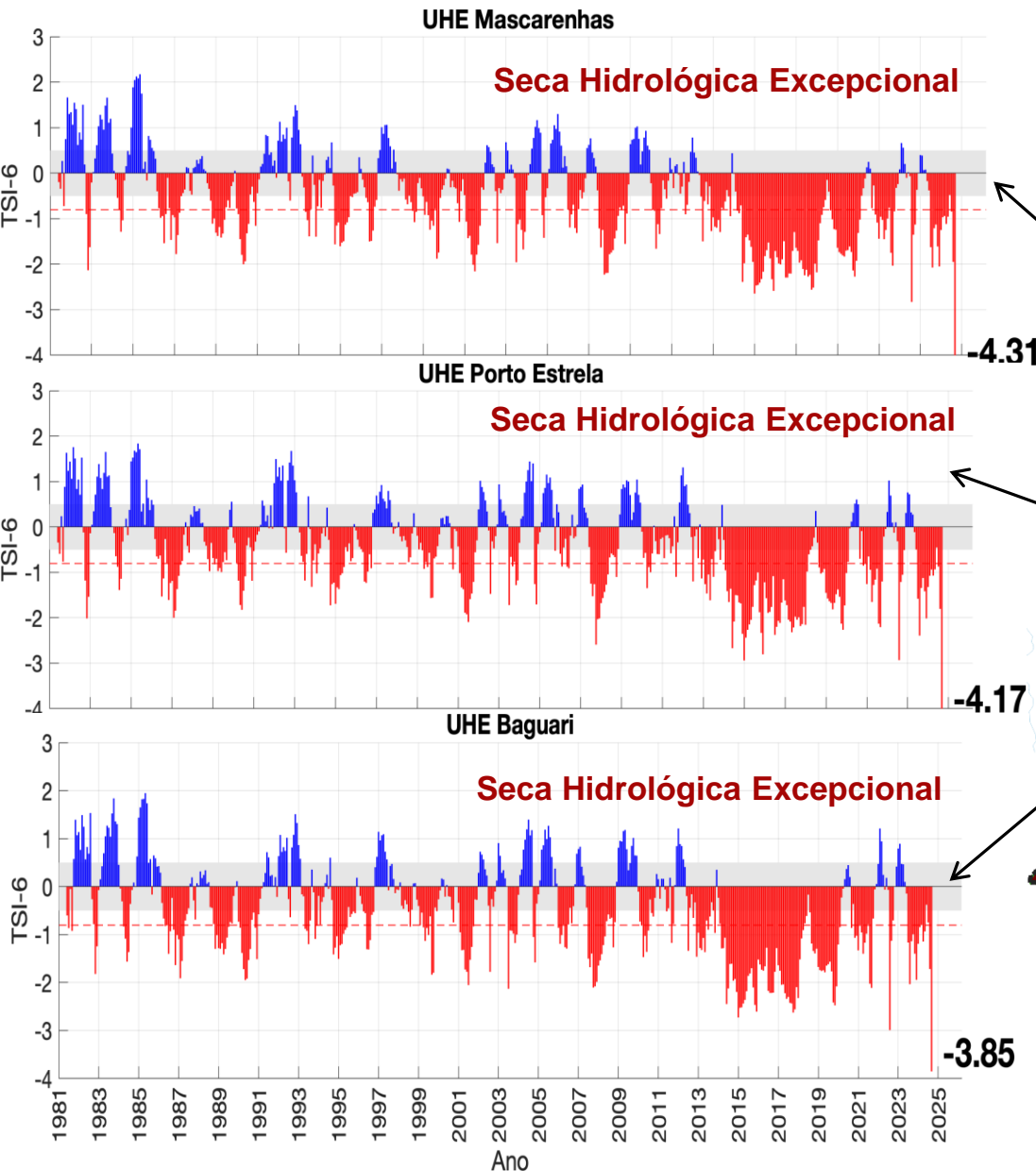
# Índice Bivariado de Seca (Chuva-Vazão) – TSI-12

## TSI-12 Setembro 2024



# Índice Bivariado de Seca (Chuva-Vazão) – TSI-6

## TSI-6 Setembro 2024

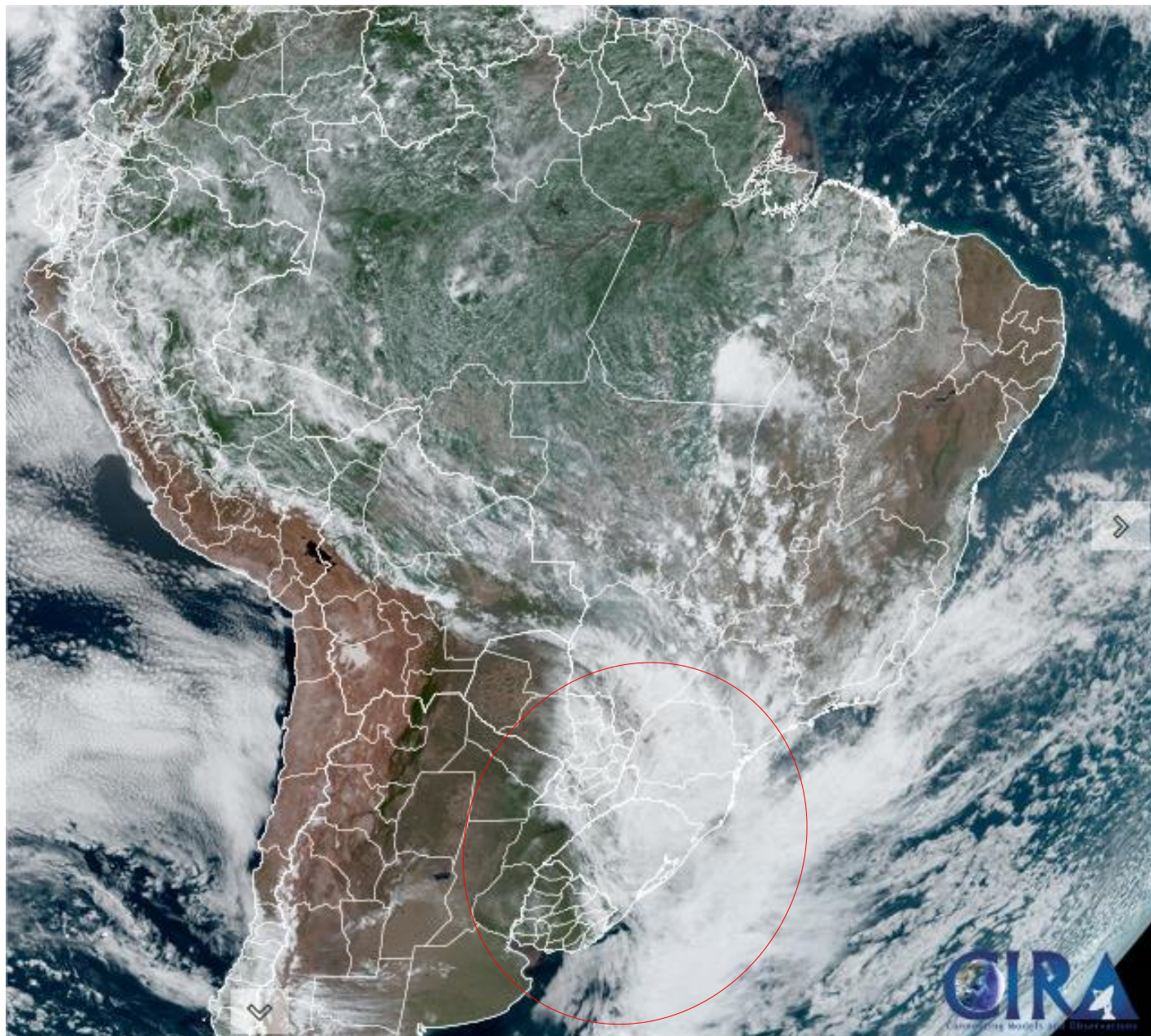


- Bacia UHE Porto Estrela (Dark Red)
- Bacia UHE Baguari (Green)
- Bacia UHE Mascarenhas (Red)
- Bacia Rio Doce (White)
- Hidrografia (Blue dashed line)

Fonte: CEMADEN  
Dados: Precipitação (CHIRPS)  
Vazão (ONS/ANA) - Jan/1981-Set/2024.

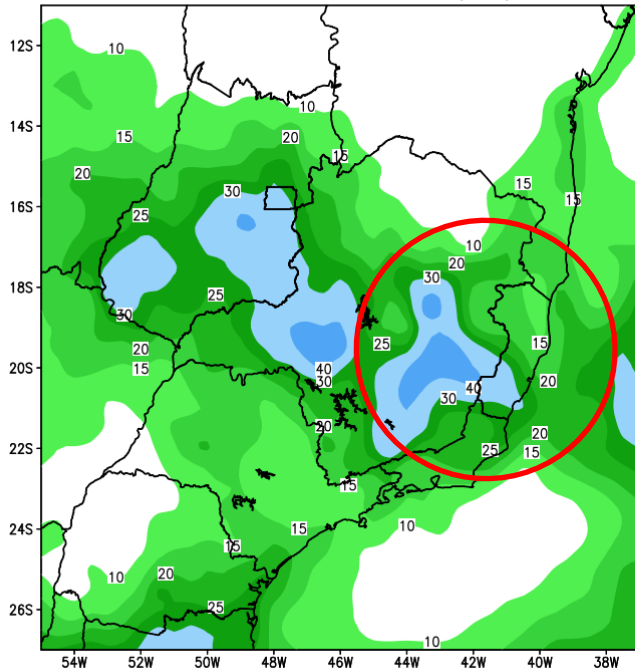


## Situação meteorológica atual

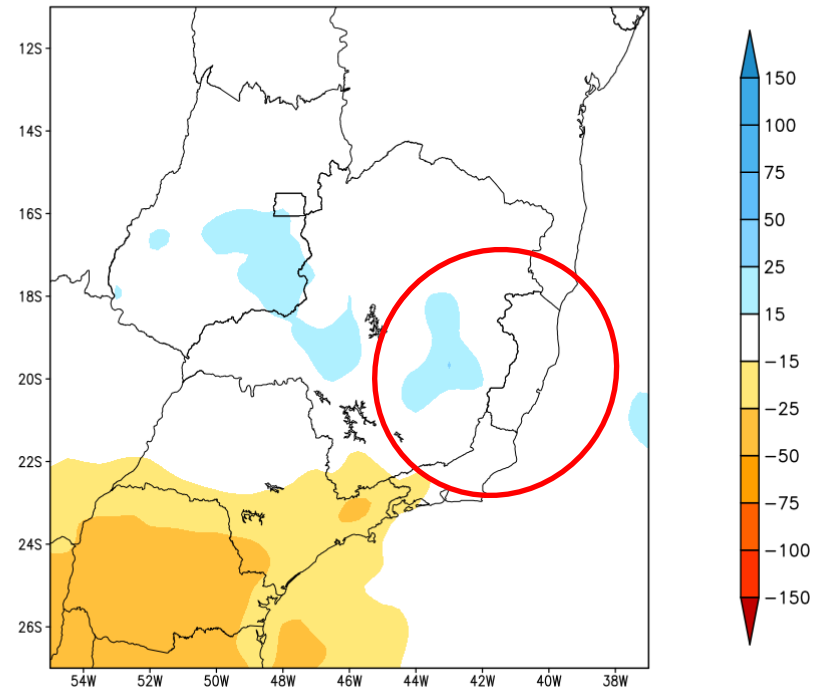


# Previsão de chuva para os próximos 7 dias

GEFS / BRASIL\_SE  
Precipitacao acumulada 1aSem (mm)  
Previsao das 00Z dia 11/10/2024



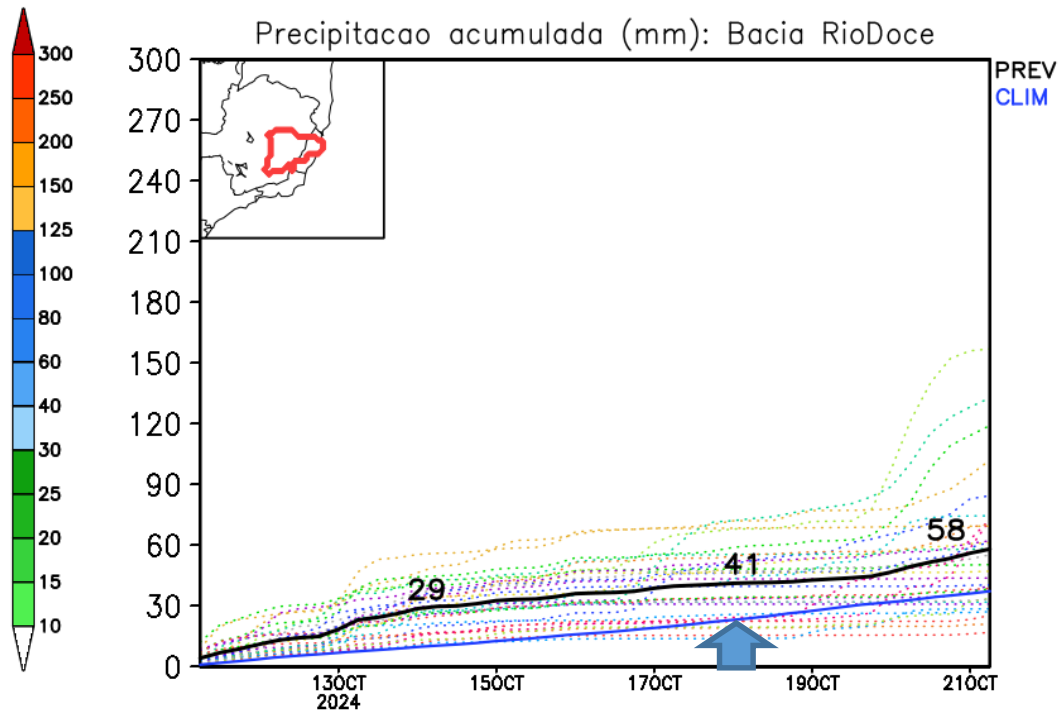
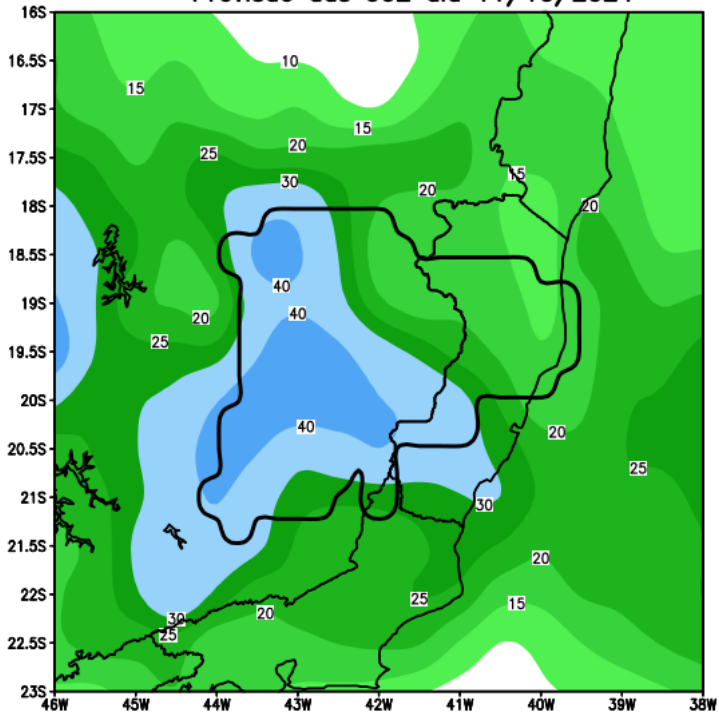
Anomalia de Precipitacao BR\_SE (mm)  
Periodo: 2024101100 a 2024101800



Fonte: GEFS/NOAA

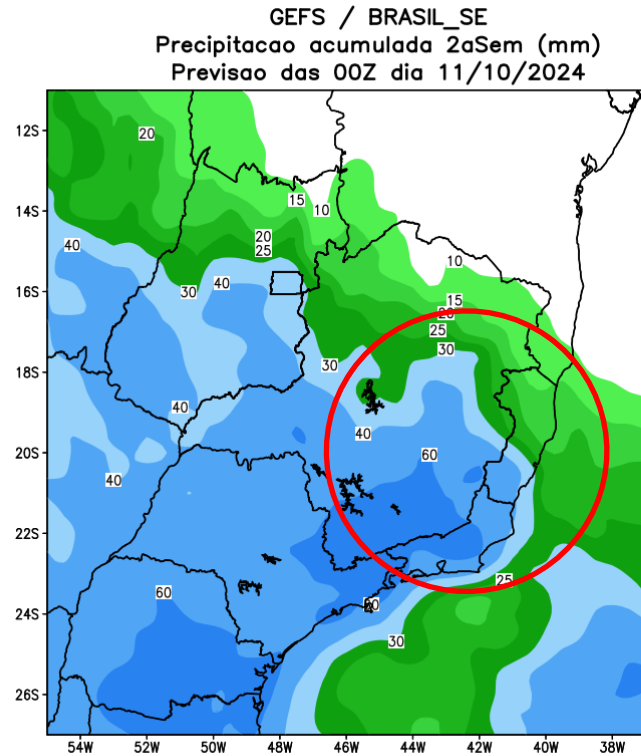
# Bacia do rio Doce

GEFS / Bacia do Rio Doce  
Precipitacao acumulada em 7 dias (mm)  
Previsao das 00Z dia 11/10/2024

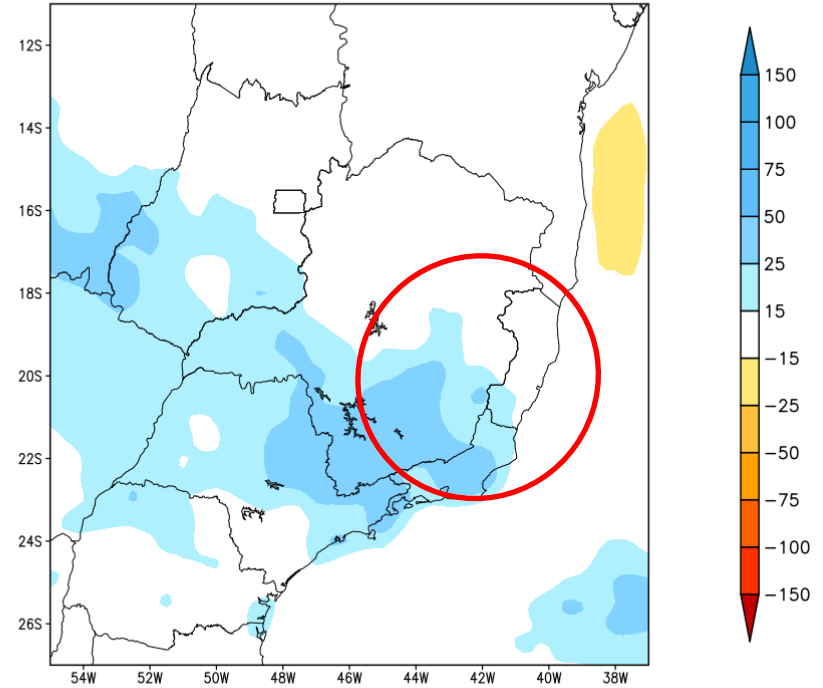


Fonte: GEFS/NOAA

# Tendência para a 2ª Semana

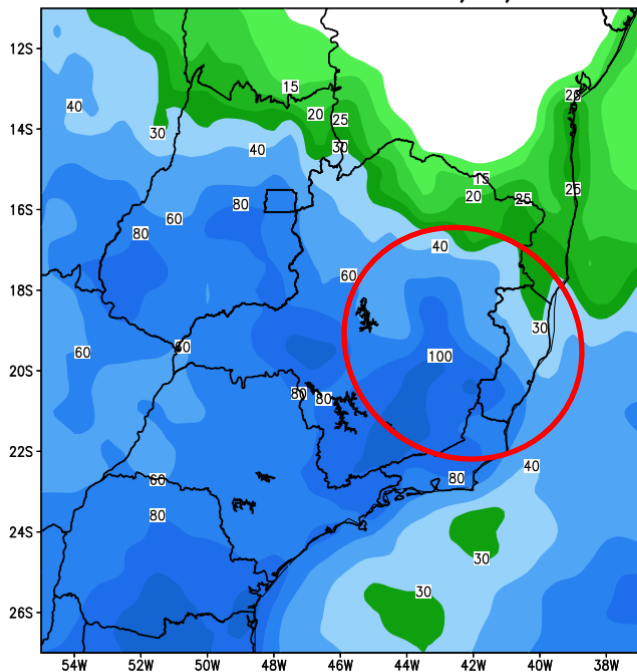


Anomalia de Precipitacao BR\_SE (mm)  
Periodo: 2024101900 a 2024102500

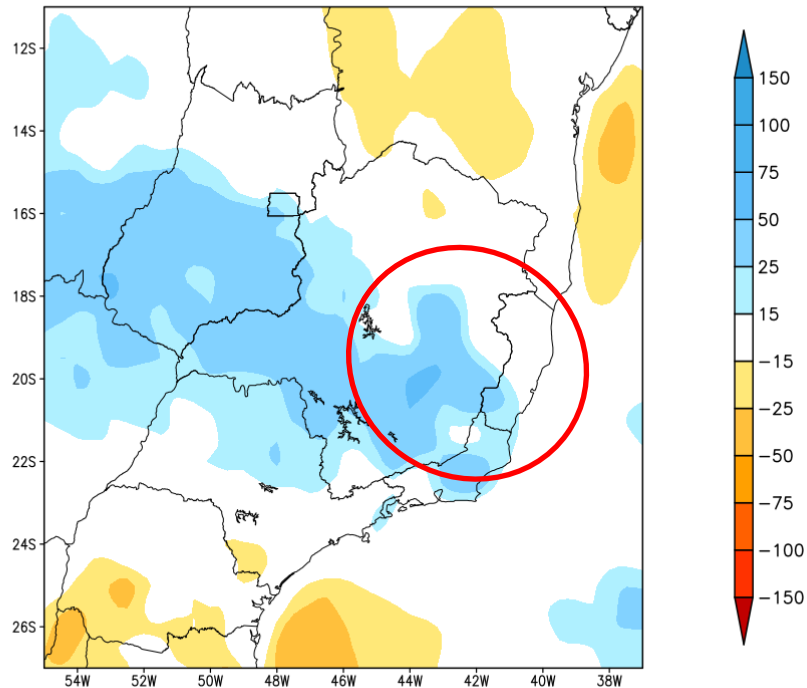


# Tendência para as duas próximas semanas

GEFS / BRASIL\_SE  
Precipitacao acumulada 14dias (mm)  
Previsao das 00Z dia 11/10/2024



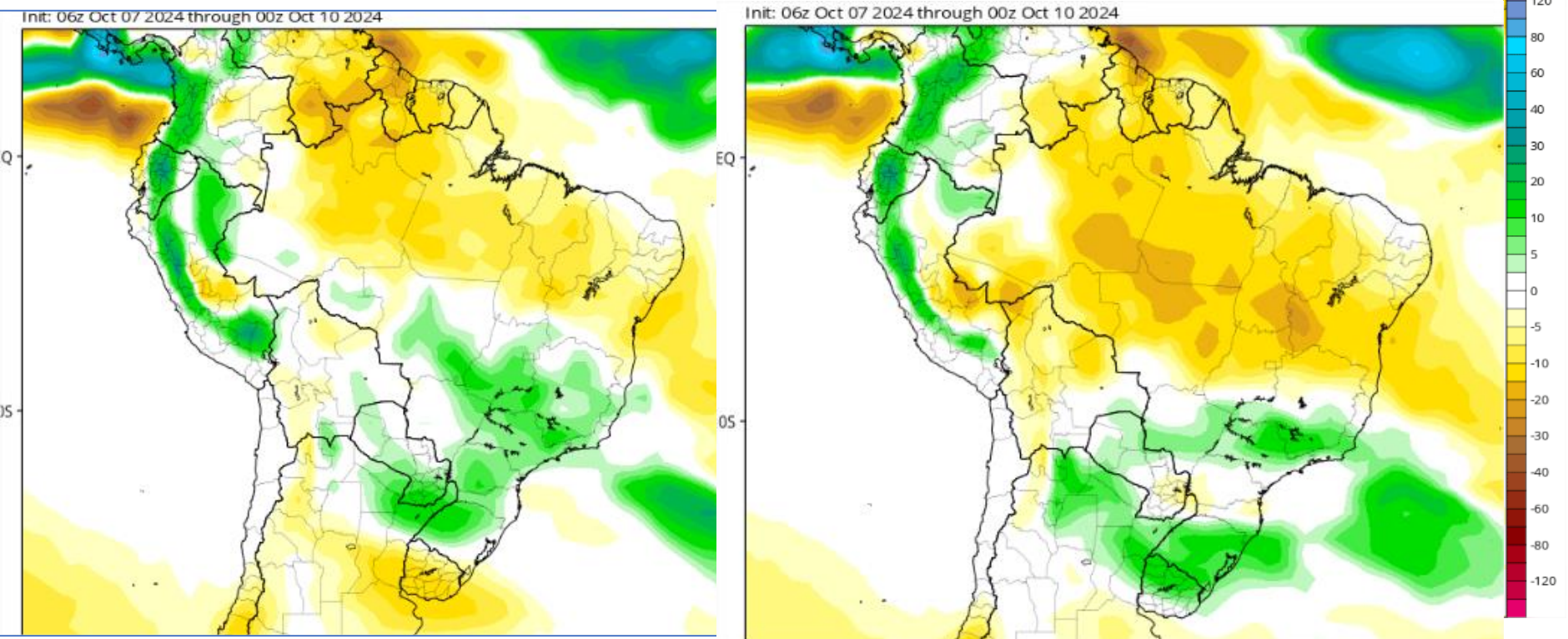
Anomalia de Precipitacao BR\_SE (mm)  
Periodo: 2024101100 a 2024102500



# Tendência 3a e 4a semanas

24-31 Out

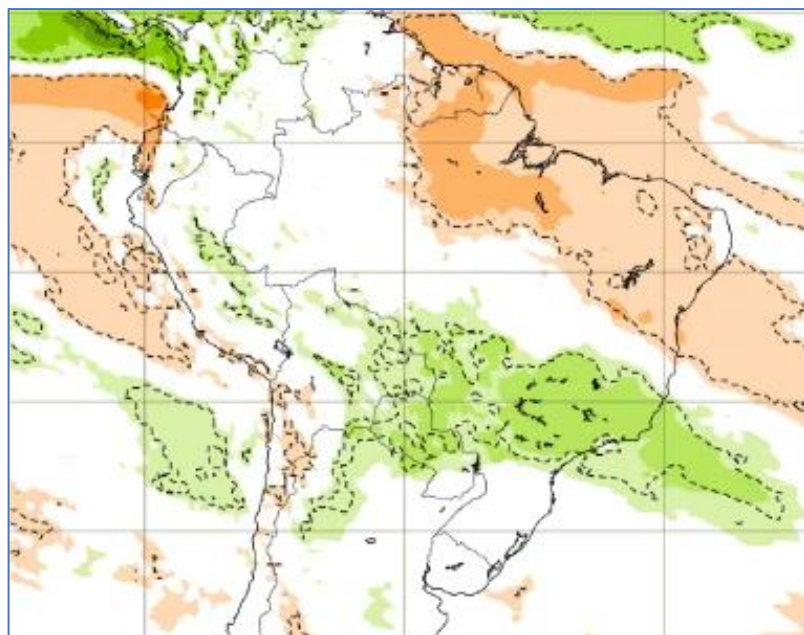
31 Out-07 Nov



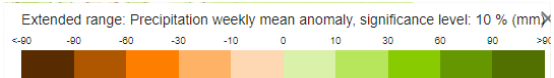
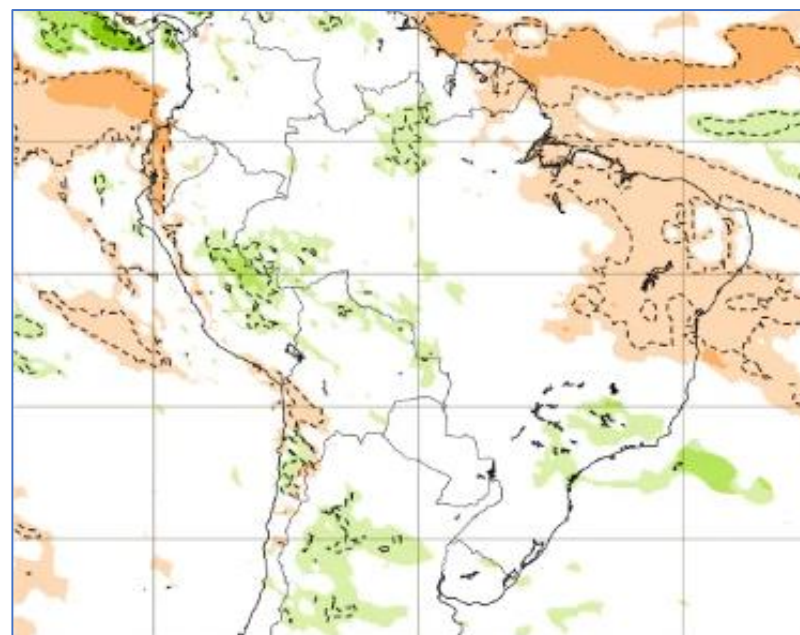
CFSv2 Accumulated Precip. Anomaly (mm)

# Tendência para 3ª e 4ª semanas

28 Out – 04 Nov



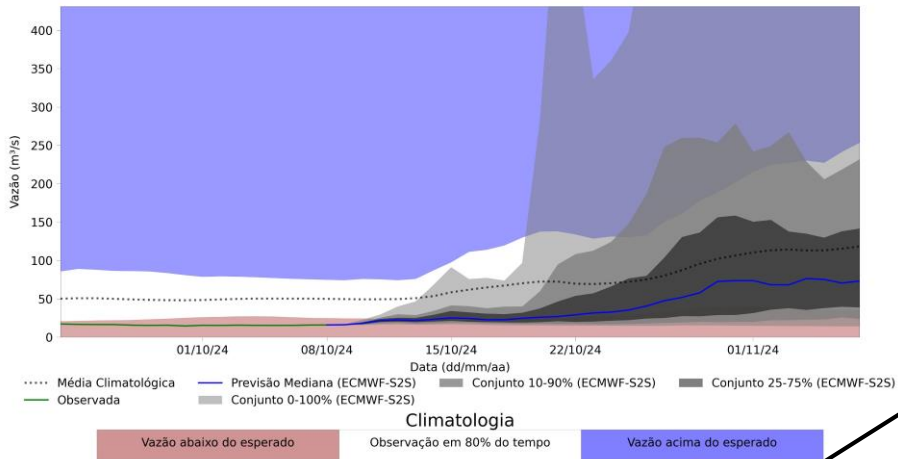
04-11 Nov



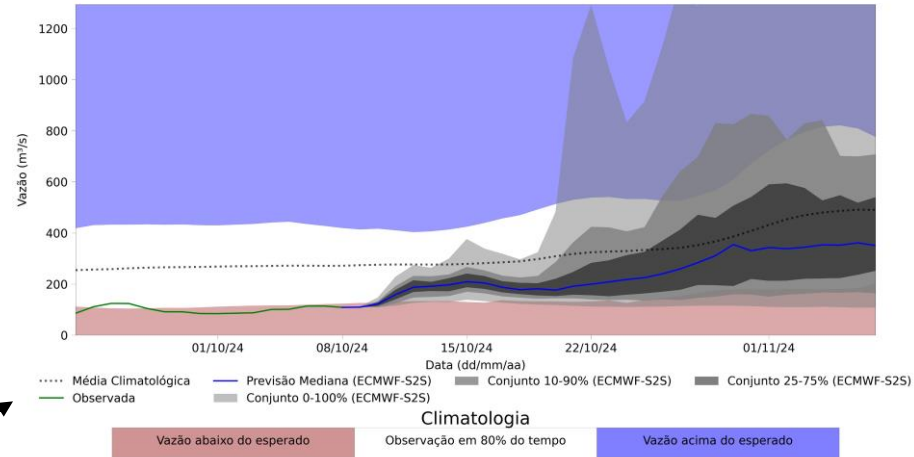
# Previsão de vazão natural na Bacia Rio Doce 30 dias (Modelo hidrológico MHD)

Previsão: 09/10/24 a 07/11/2024

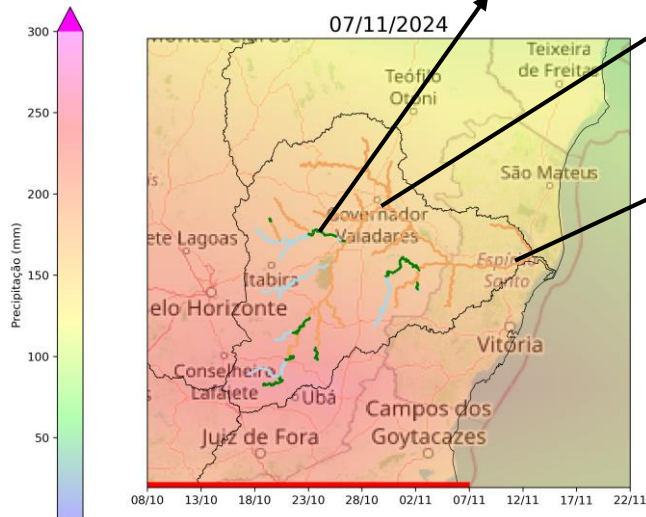
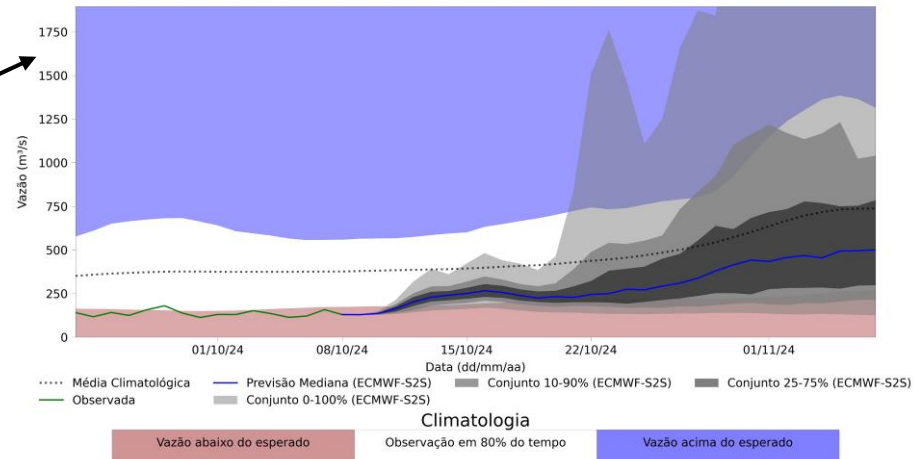
### UHE Porto Estrela



### Governador Valadares - MG



### Colatina - ES



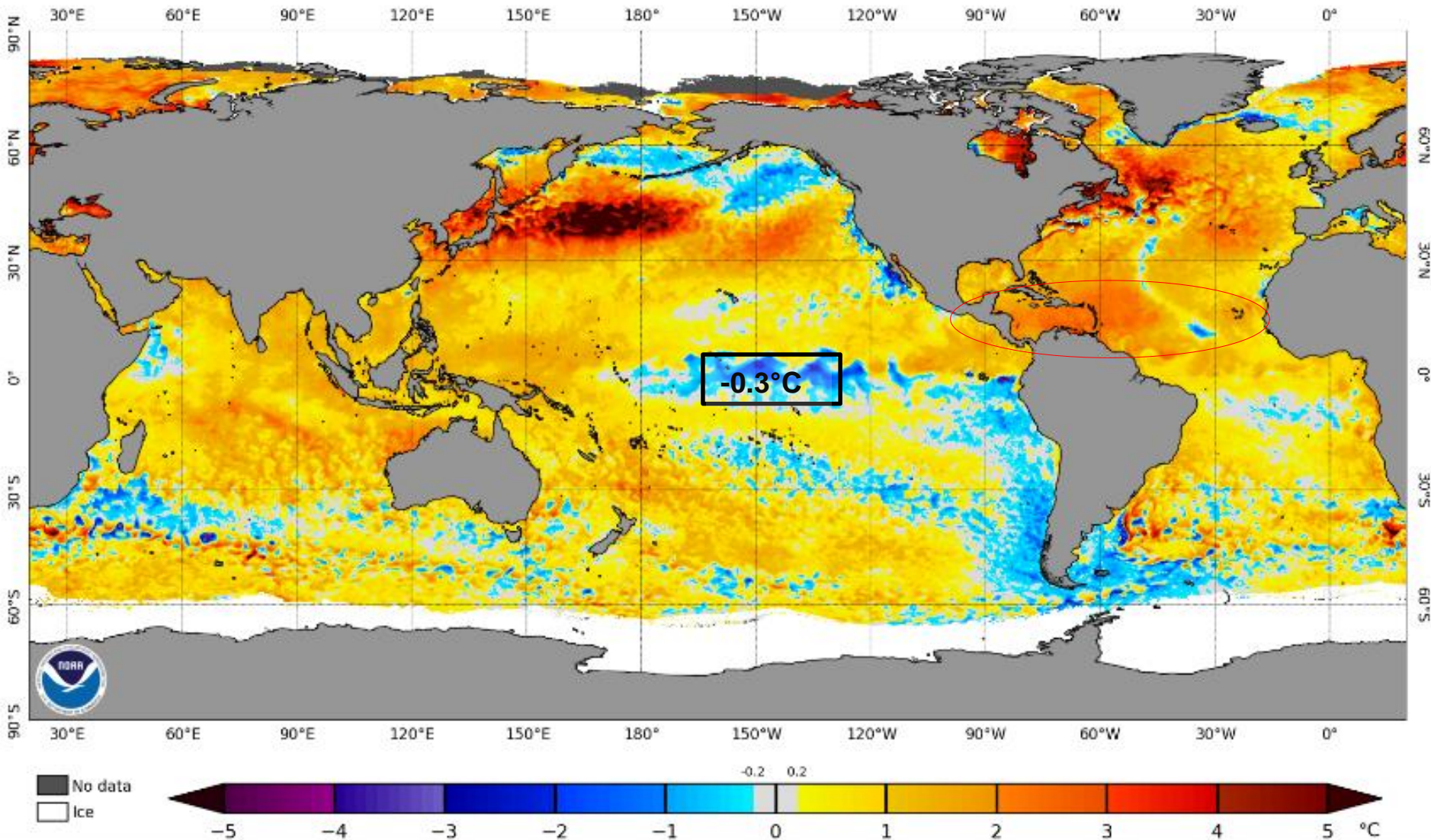
- Abaixo Percentil 10%
- Abaixo da média
- Próximo da média
- Acima da média
- Acima Percentil 90%

Fonte: Meteorologia (INMET/MERGE); Vazão (ANA/ONS)  
 MLT: 1993-2023  
 Previsão Meteorológica: ECMWF-S2S



# Status Atual: **La Niña Watch**

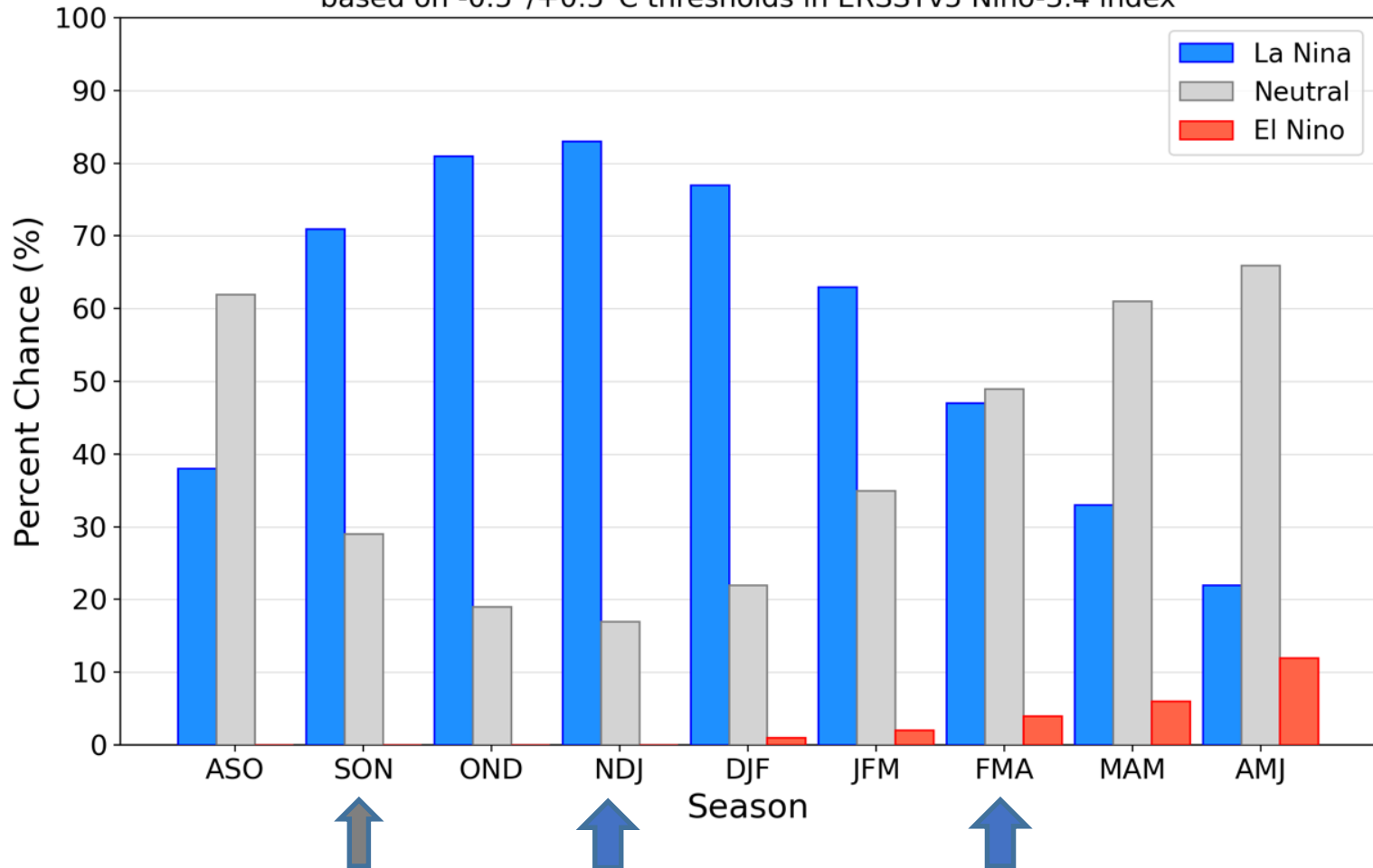
NOAA Coral Reef Watch Daily 5km SST Anomalies (v3.1) 9 Oct 2024



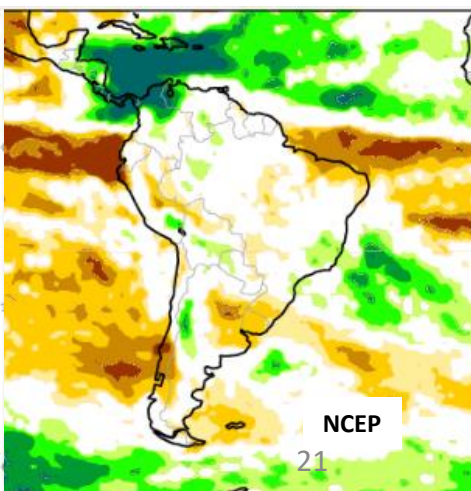
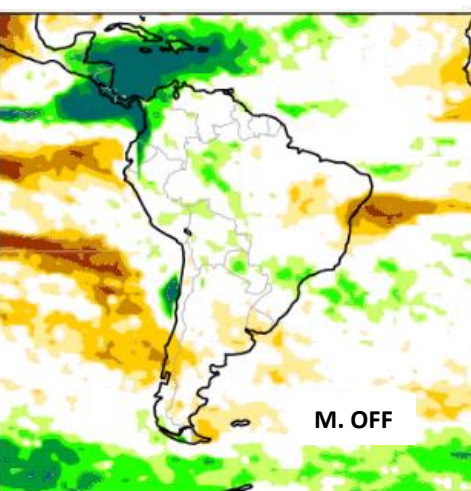
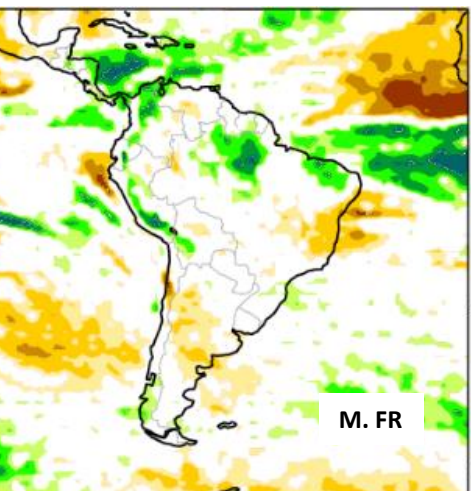
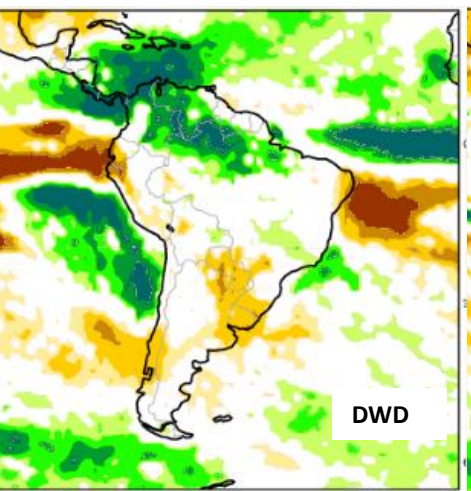
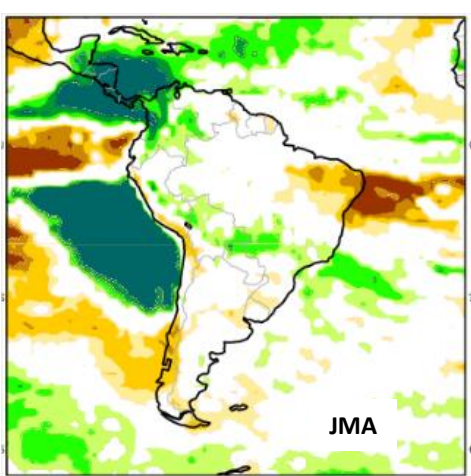
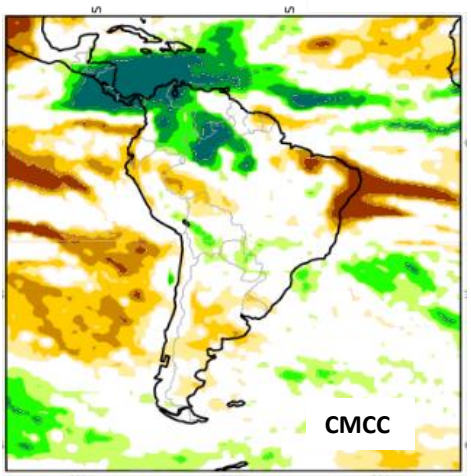
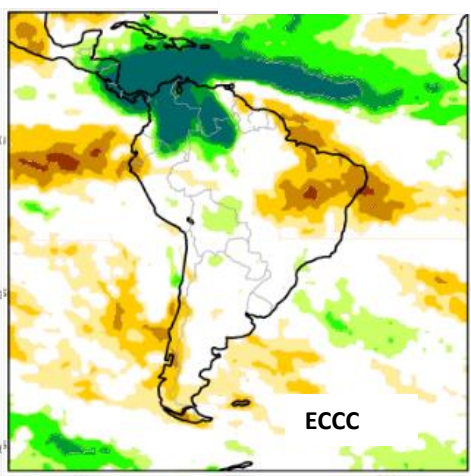
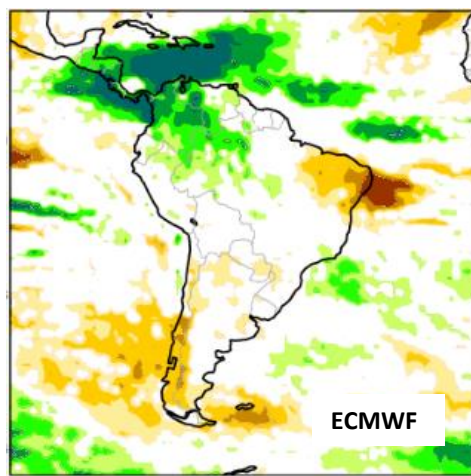
# Previsão do “ENSO”

## Official NOAA CPC ENSO Probabilities (issued September 2024)

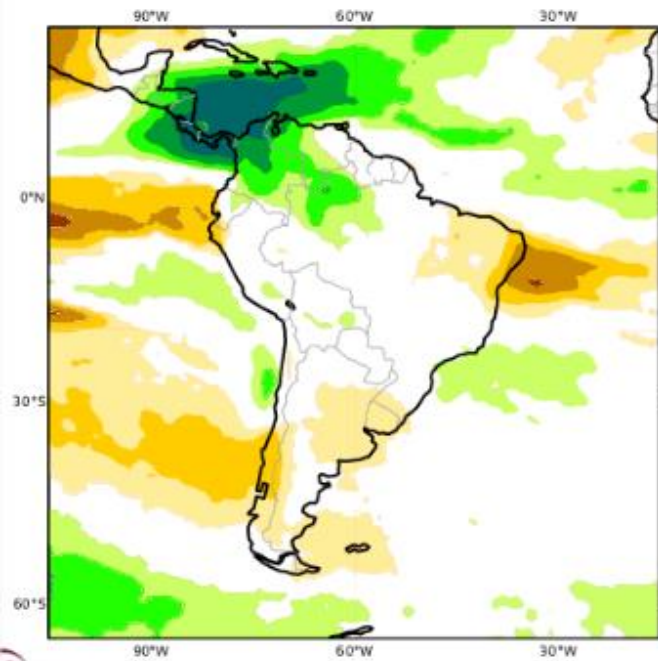
based on  $-0.5^{\circ}/+0.5^{\circ}\text{C}$  thresholds in ERSSTv5 Niño-3.4 index



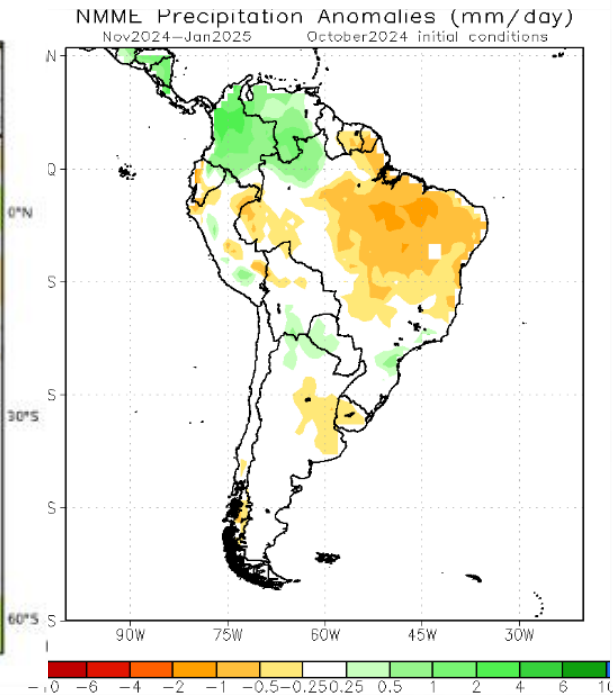
# Previsão Sazonal de Chuva NDJ



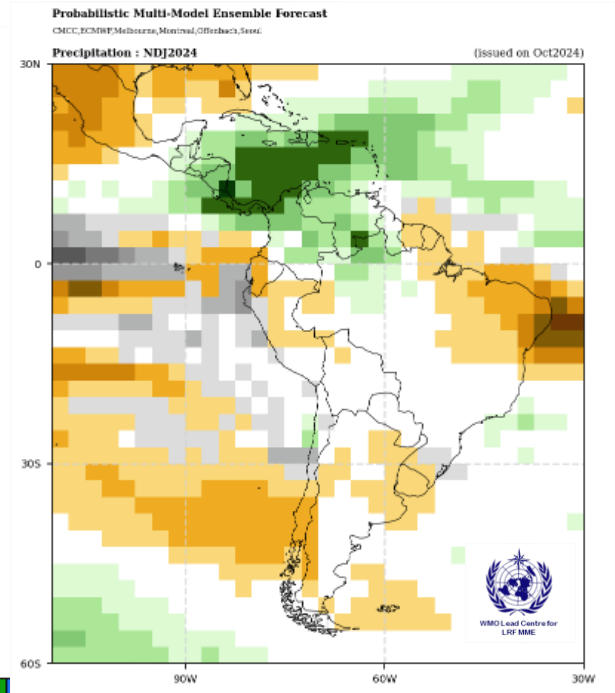
# Previsão Sazonal de Chuva Multi-Modelo para NDJ



Modelos Europeus



Modelos Norte Americanos



Modelos da WMO