



Secas na região Norte

Marcus Suassuna Santos

Sistemas de Alertas Hidrológicas

Serviço Geológico do Brasil - CPRM



MINISTÉRIO DE
MINAS E ENERGIA



Acesso especial aos dados

Nossos Produtos

SGB DESCOMPLICA - GEOCIÊNCIAS PARA TODOS

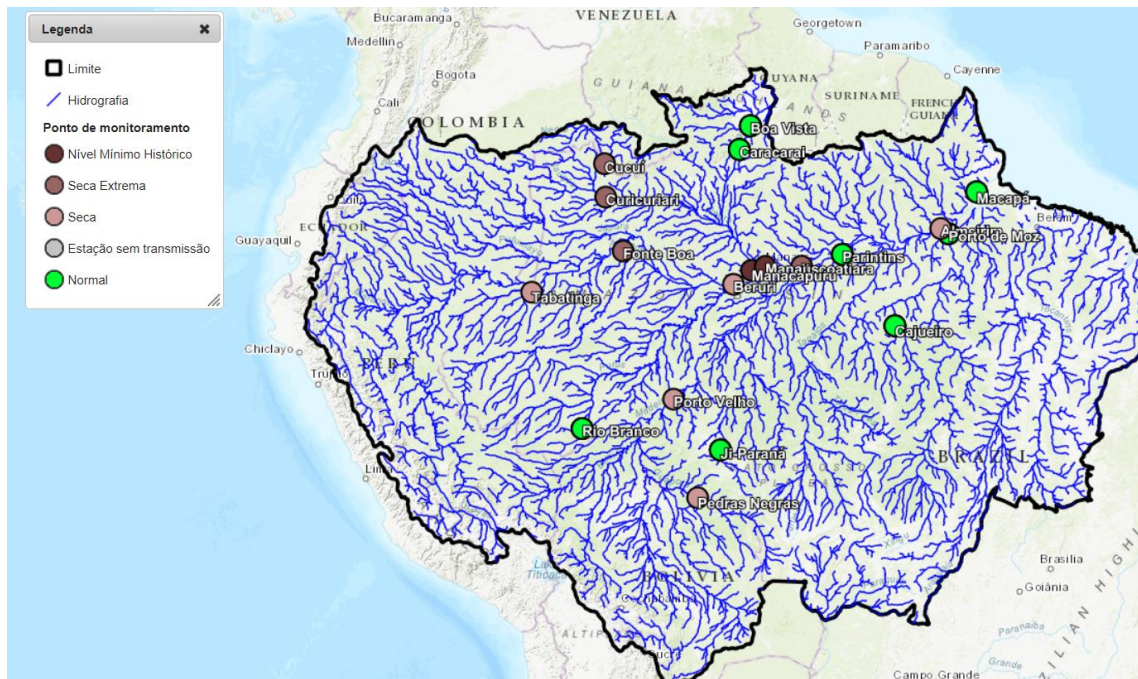


<https://www.sgb.gov.br/publique/Hidrologia/Eventos-Criticos/Seca-na-Regiao-Amazonica-8328.html>

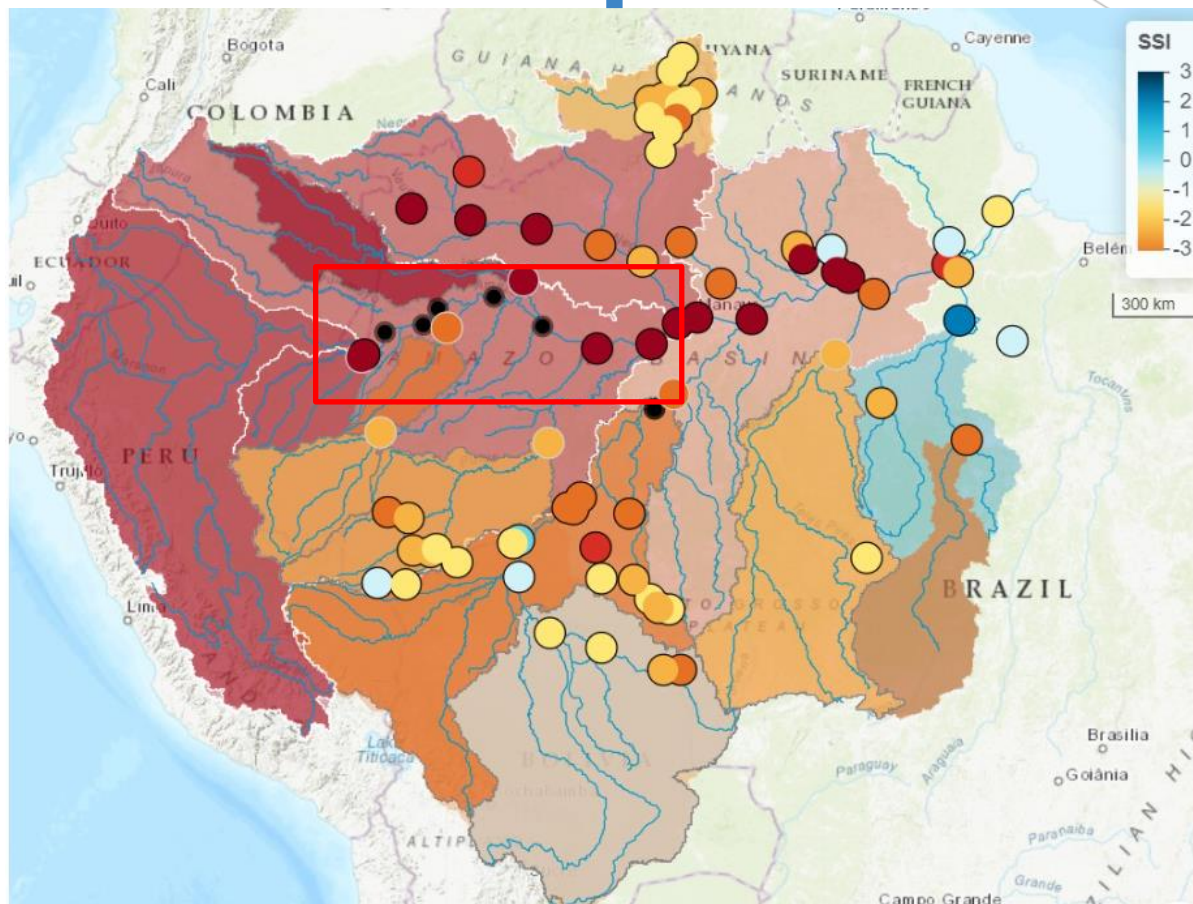
Acesso aos dados



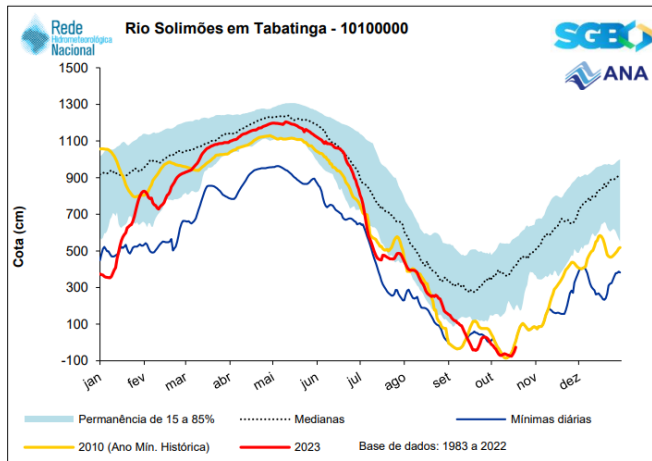
[Página Inicial](#) - [Bacias Monitoradas](#) - [Manchas de Inundação](#) - [Secas e Estiagens](#) - [Monitoramento Especial](#)



Acesso aos dados – frequência dos boletins

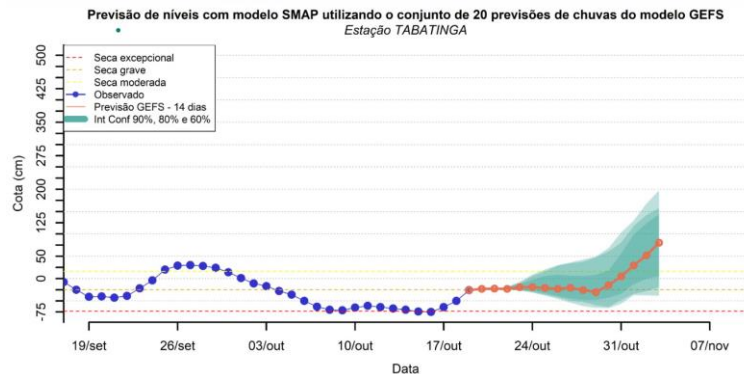


Acesso aos dados – frequência dos boletins

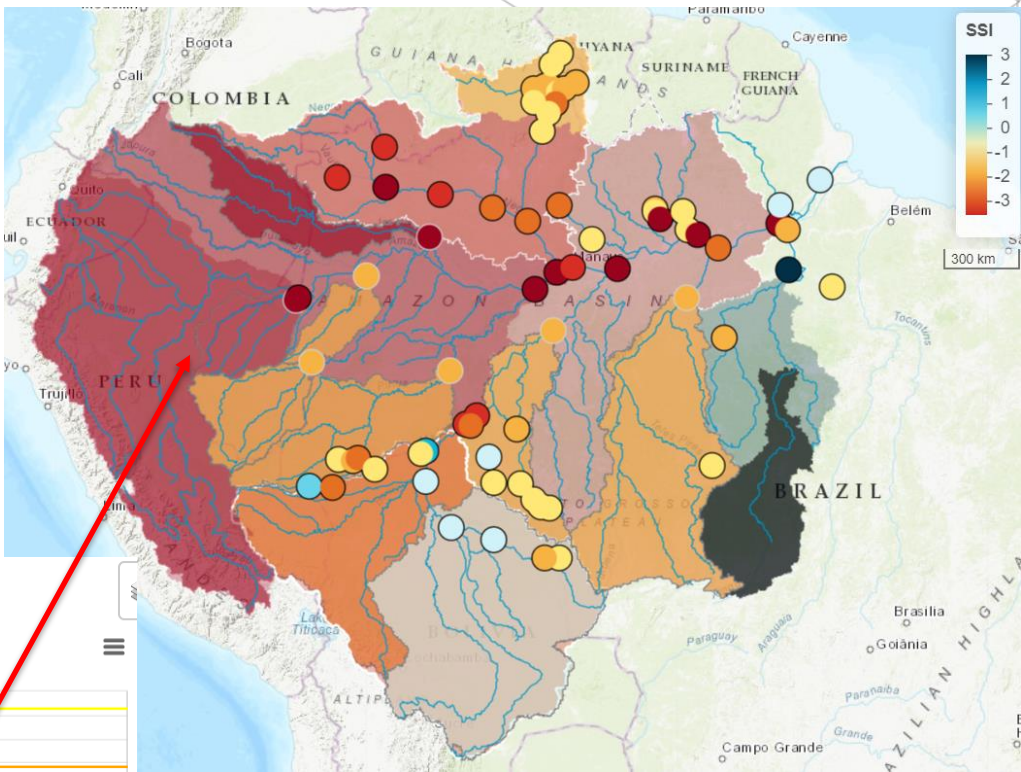
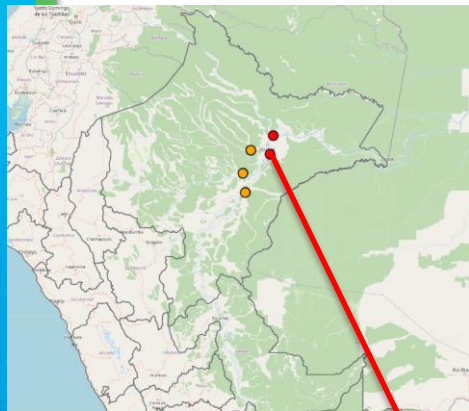


Tabatinga		
Cota atual: -26 cm		
Ordem	Ano	Cota (cm)
1	2010	-86
2	2023	-75
3	2005	2
4	2022	2
5	1998	13
6	1995	43
7	1988	60
8	2021	72
9	2012	84
10	2018	94
11	2007	97
12	2011	105
13	1999	113

Cota atual
-5 cm



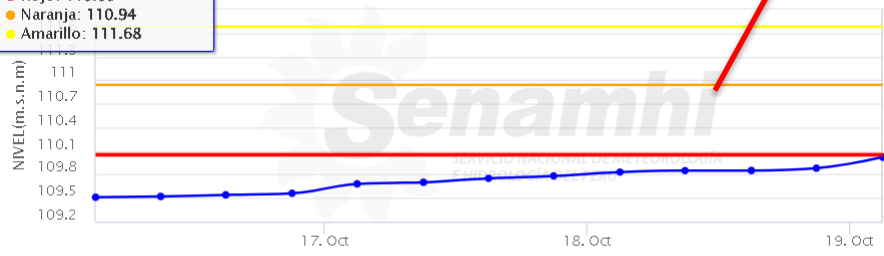
Acesso aos dados -



● Nivel ● Caudal **Horario** Diario Fecha: 2023-10-19 06:00:00

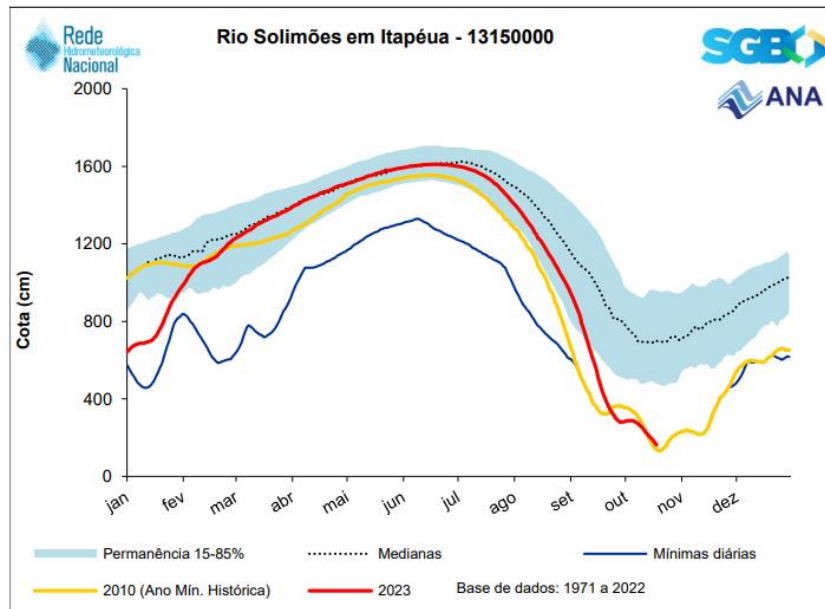
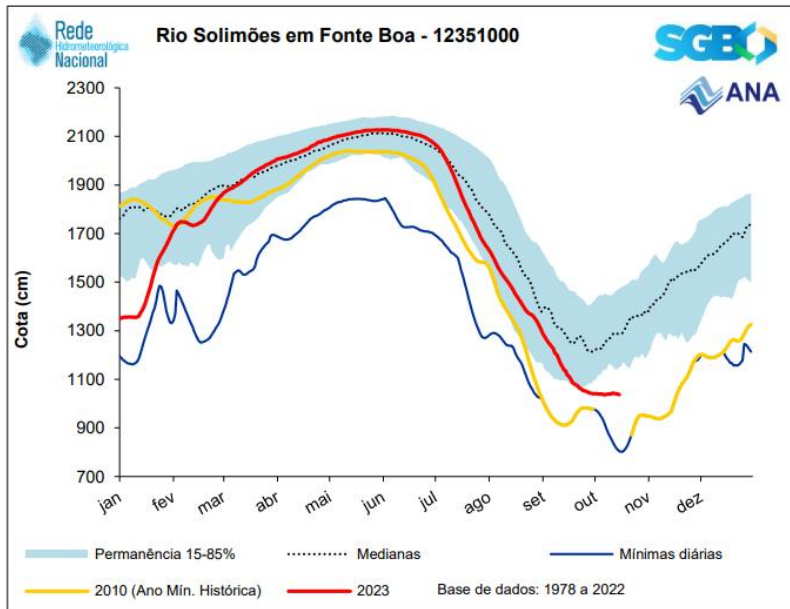
Jueves, 19 Oct 2023, 06:00
● Datos Horarios: 110.02
● Rojo: 110.05
● Naranja: 110.94
● Amarillo: 111.68

HIDROGRAMA DE NIVEL DEL RIO AMAZONAS
ESTACION TAMSHIYACU

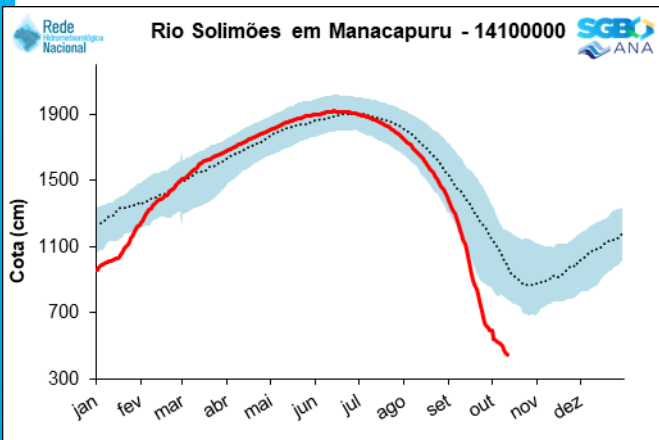


● Datos Horarios ● Rojo ● Naranja ● Amarillo

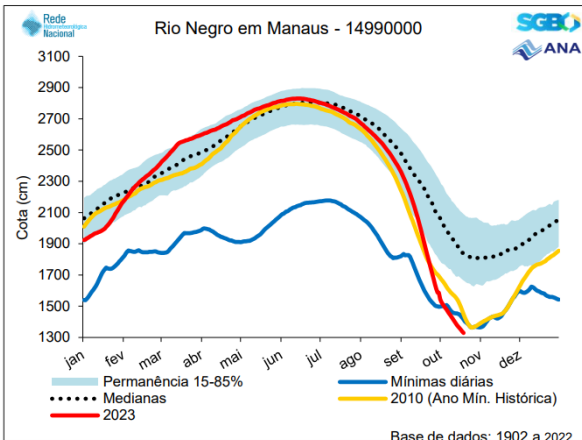
Acesso aos dados – frequência dos boletins



Acesso aos dados – frequência dos boletins



Manacapuru		
Cota atual: 361 cm		
Ordem	Ano	Cota (cm)
1	2023	361
2	2010	392
3	2009	460
4	1997	495
5	2005	508
6	1995	552
7	1998	557
8	2008	617
9	2022	652
10	1991	667
11	1990	670
12	2012	672
13	2015	691



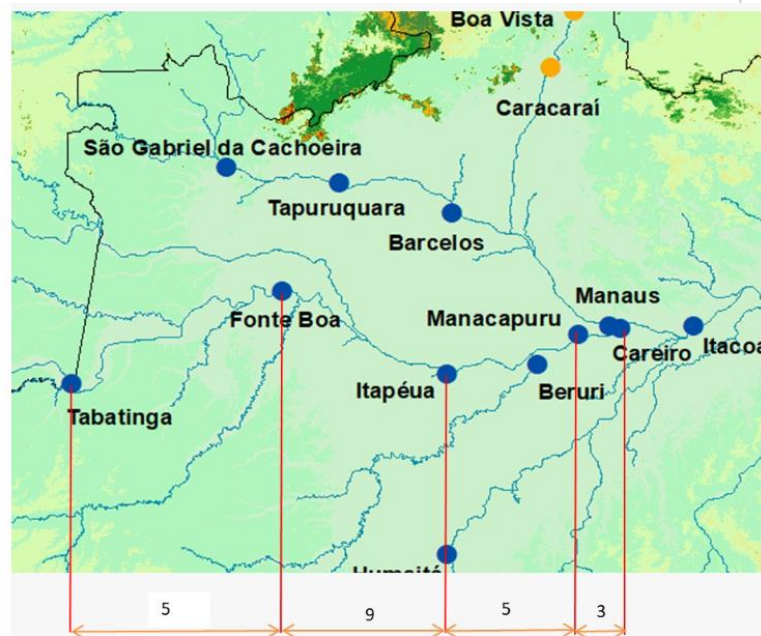
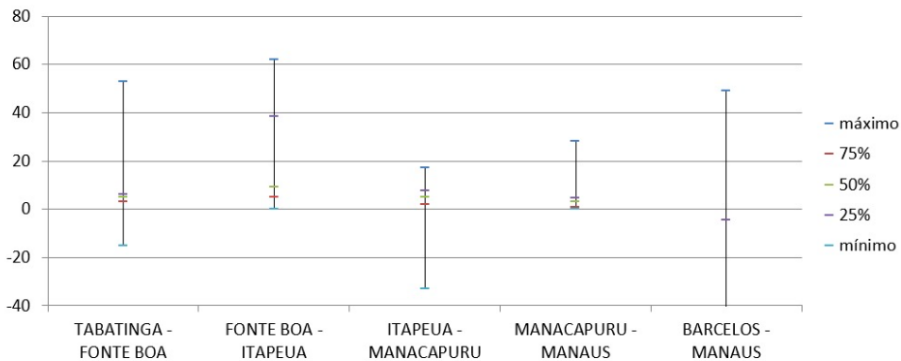
Maiores Vazantes em Manaus		
Cota atual: 1329 cm		
Ordem	Ano	Cota (cm)
1	2023	1329
2	2010	1363
3	1963	1364
4	1906	1420
5	1997	1434
6	1916	1442
7	1926	1454
8	1958	1474
9	2005	1475
10	1936	1497
11	1998	1503
12	1909	1504
13	1995	1506

Base de dados: 1902 a 2022

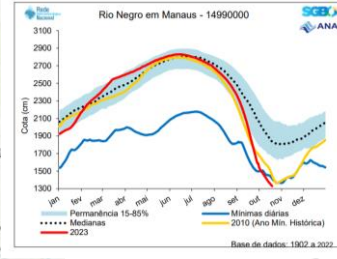
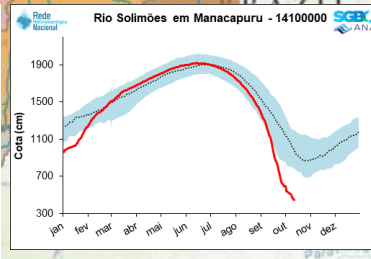
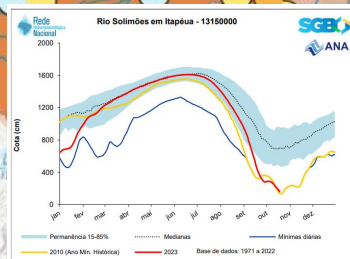
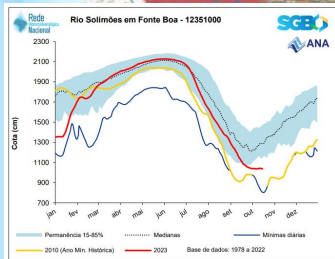
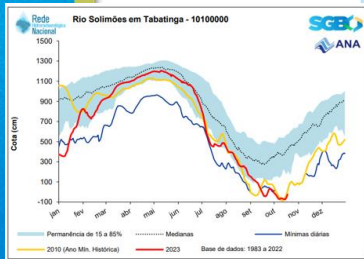
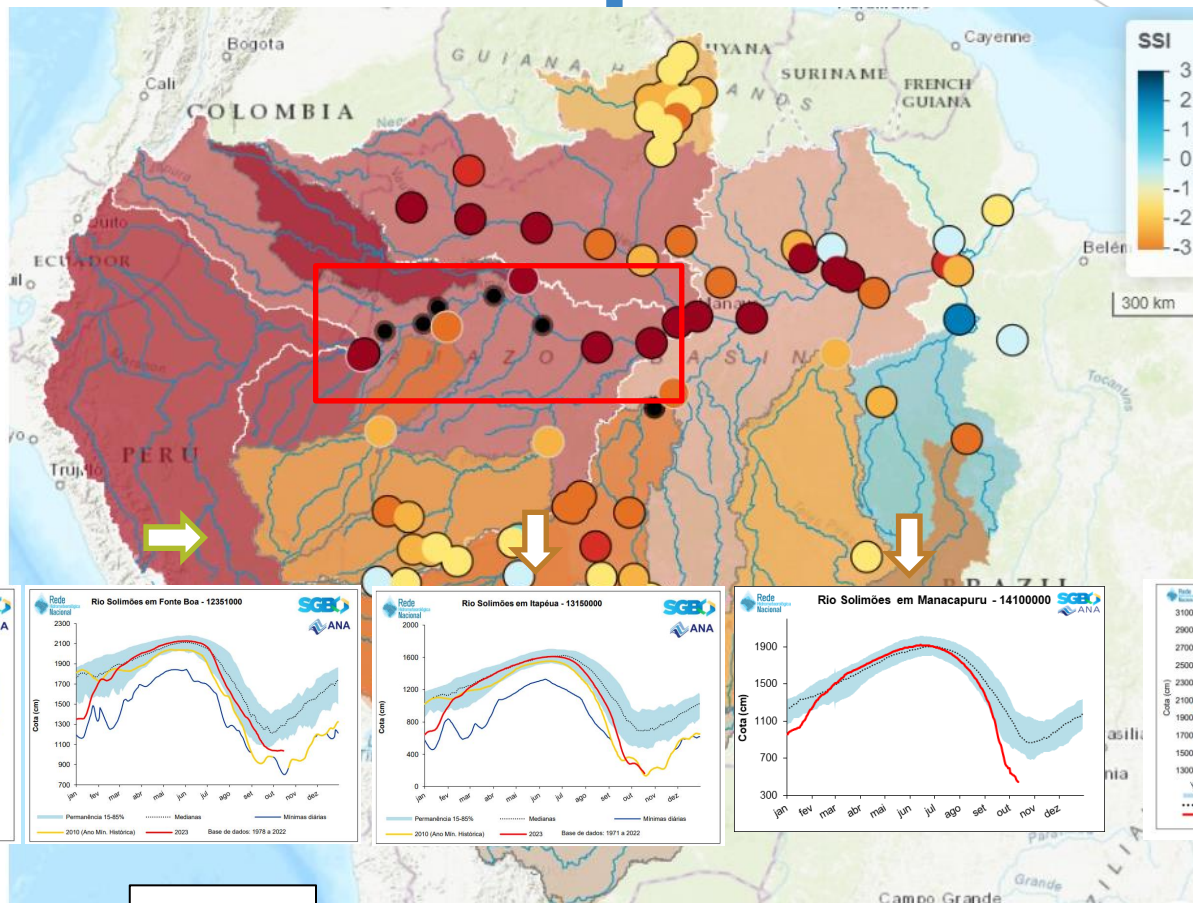
Acesso aos dados – frequência dos boletins

DELTA DATA OCORRÊNCIA MÍNIMA

	TABATINGA - FONTE BOA	FONTE BOA - ITAPEUA	ITAPEUA - MANACAPURU	MANACAPURU - MANAUS	BARCELOS - MANAUS
máximo	53	62	17	28	49
75%	3	5	2	1	-279
50%	5	9	5	3	-256
25%	6	39	8	5	-5
mínimo	-15	0	-33	0	-331
média	7	20	6	4	-175
desvio padrão	12	20	5	6	145



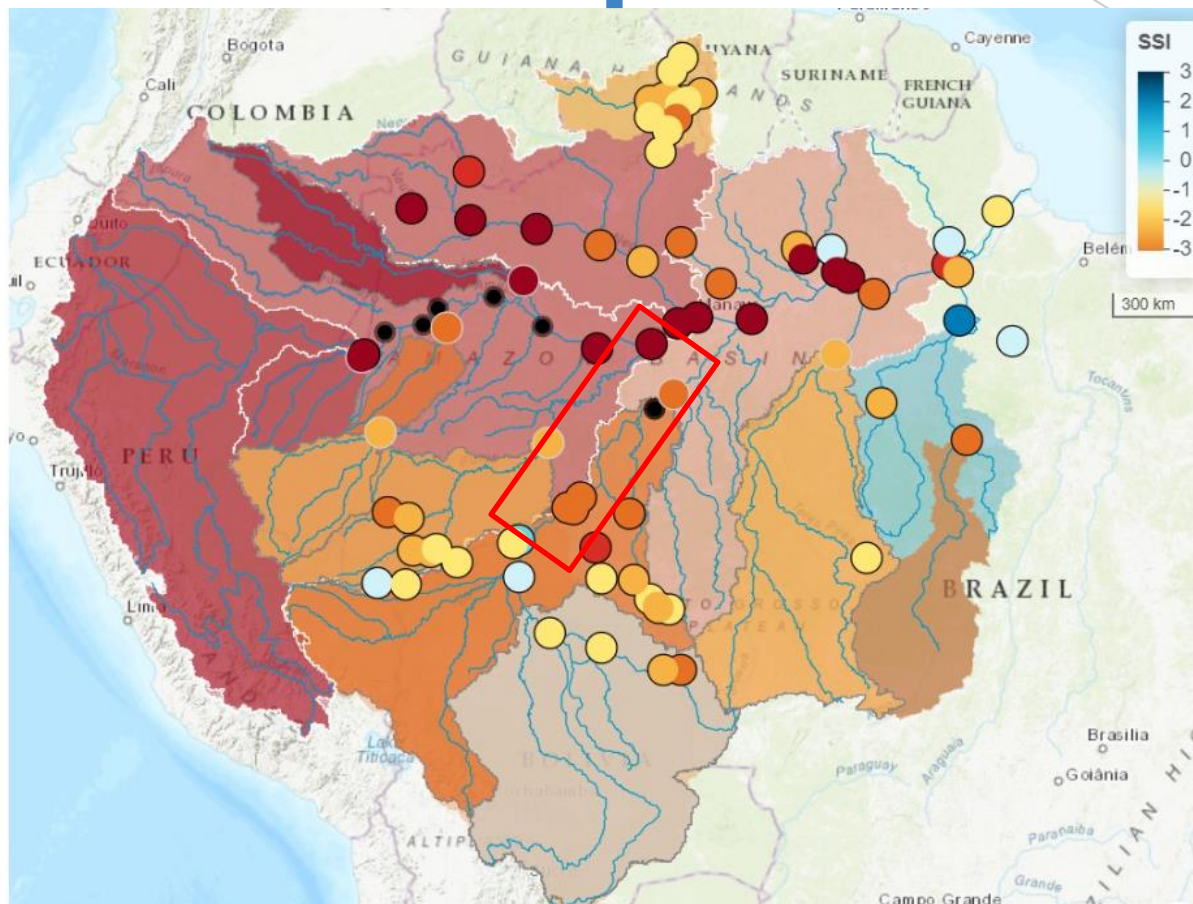
Acesso aos dados – frequência dos boletins



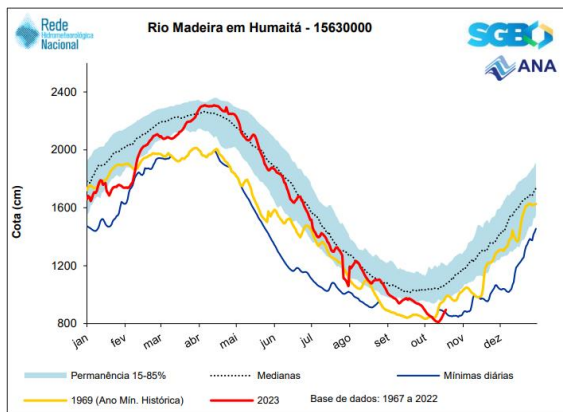
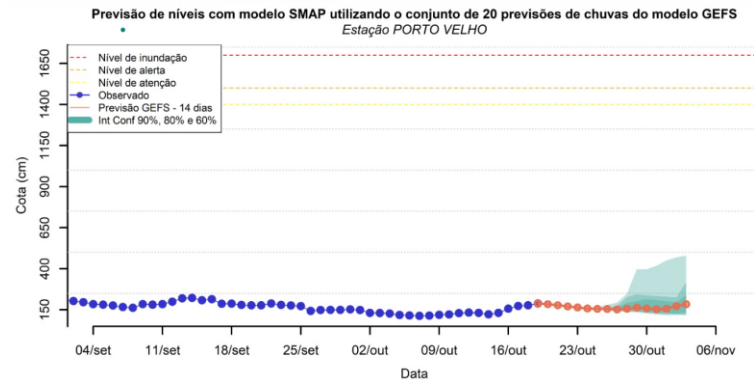
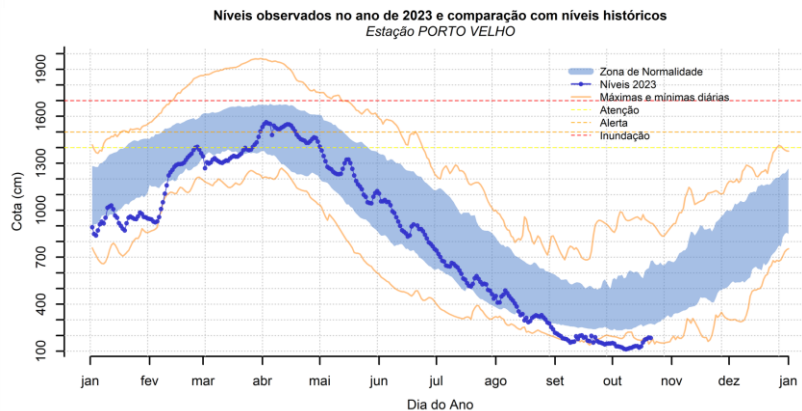
16/10

18/10?

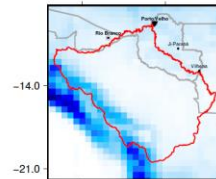
Acesso aos dados – frequência dos boletins



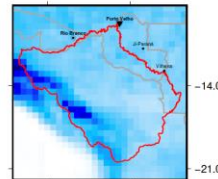
Acesso aos dados – frequência dos boletins



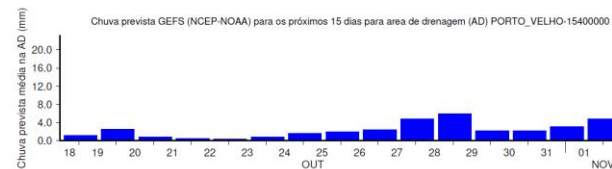
Chuva Prevista Acumulada de 7.6 mm para 7 dias



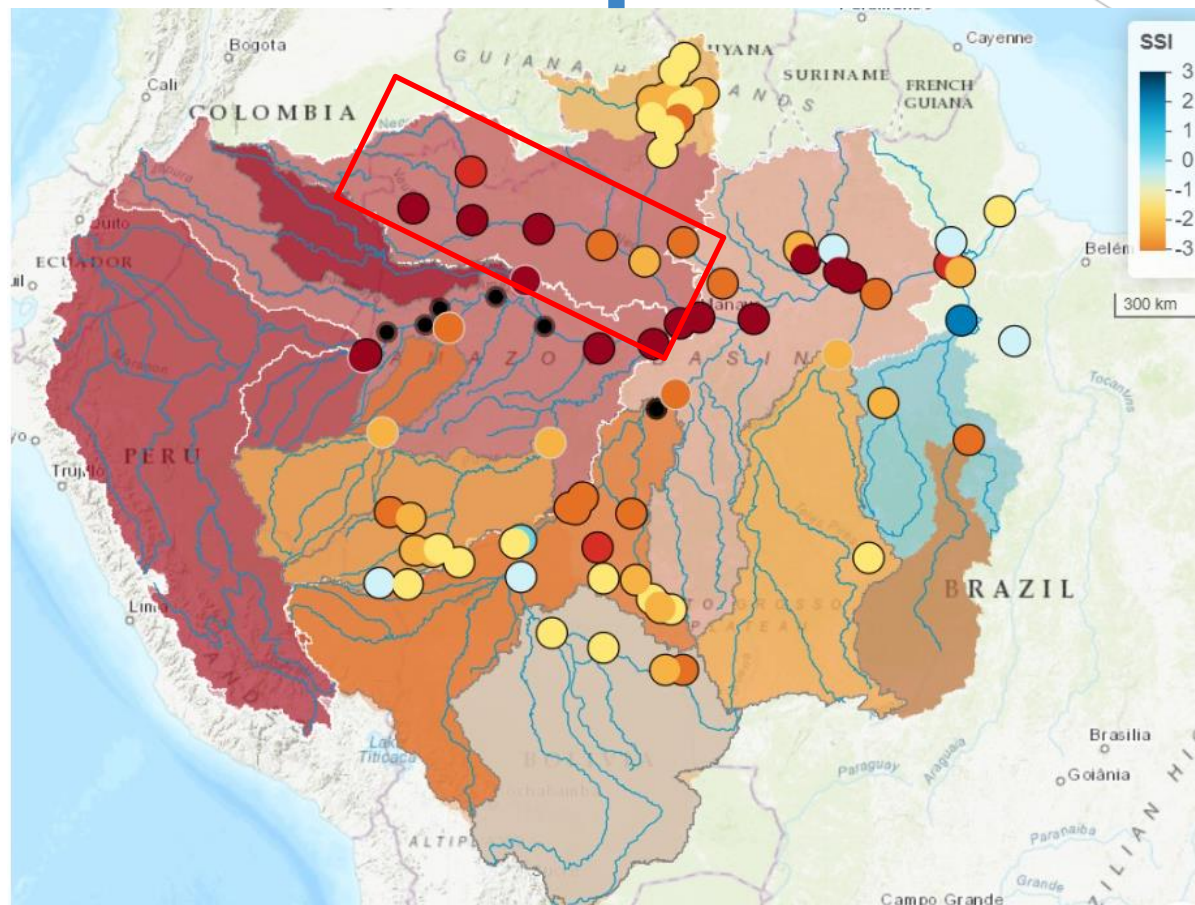
Chuva Prevista Acumulada de 27.1 mm para 7-15 dias



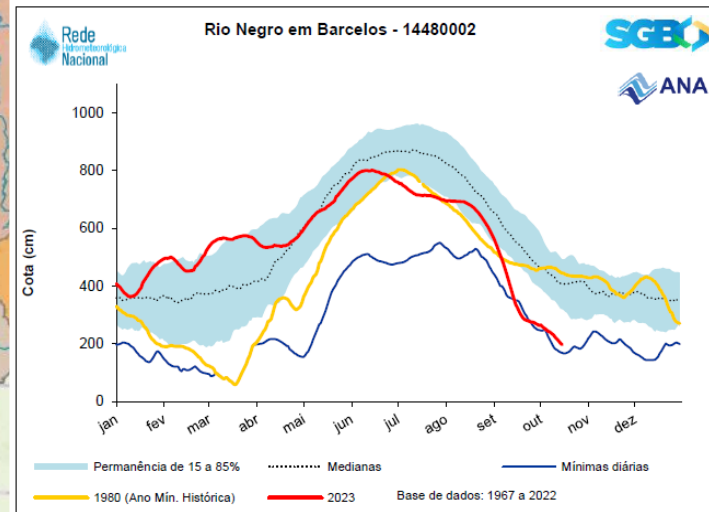
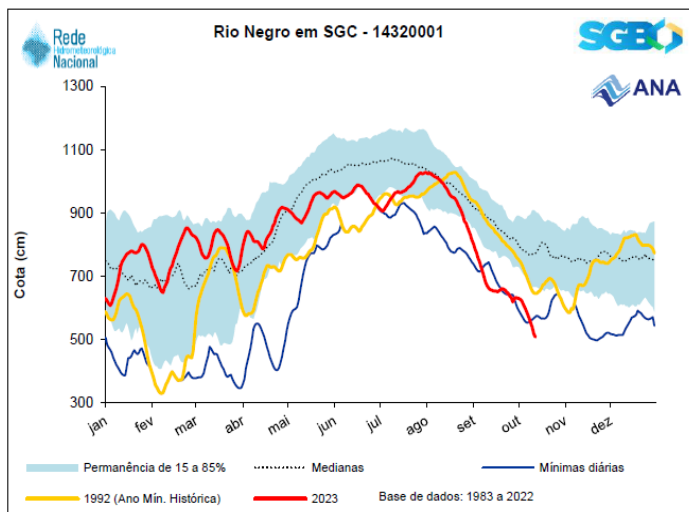
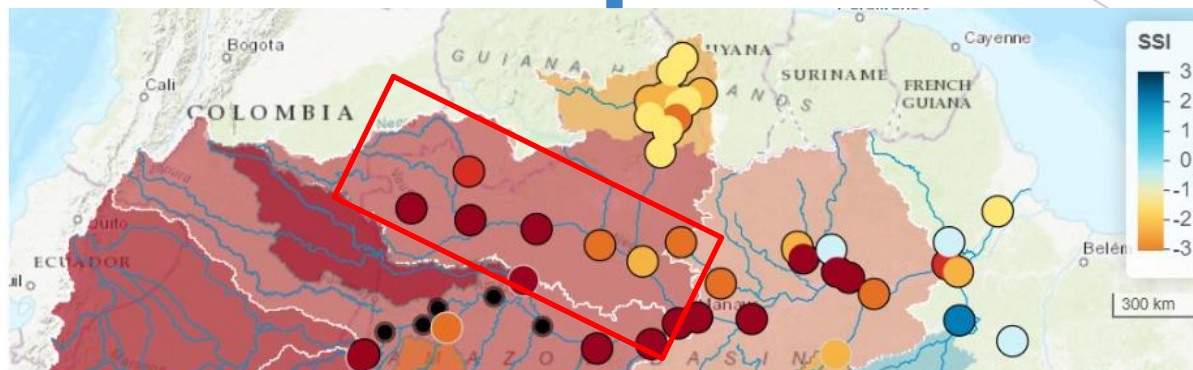
Chuva prevista GEFS (NCEP-NOAA) para os próximos 15 dias para área de drenagem (AD) PORTO_VELHO-15400000



Acesso aos dados – frequência dos boletins



Acesso aos dados – frequência dos boletins





SERVIÇO GEOLÓGICO DO BRASIL
HÁ 51 ANOS TRABALHANDO PARA O
DESENVOLVIMENTO DO PAÍS



SERVIÇO GEOLÓGICO
DO BRASIL - CPRM

Marcus Suassuna Santos
Pesquisador em Geociências

Serviço Geológico do Brasil – CPRM

www.sgb.gov.br

marcus.santos@sgb.gov.br



SERVIÇO GEOLÓGICO
DO BRASIL - CPRM

MINISTÉRIO DE
MINAS E ENERGIA

