



Sistema de Alerta Hidrológico - SGB

Artur Matos

Sistema de Alerta Hidrológico

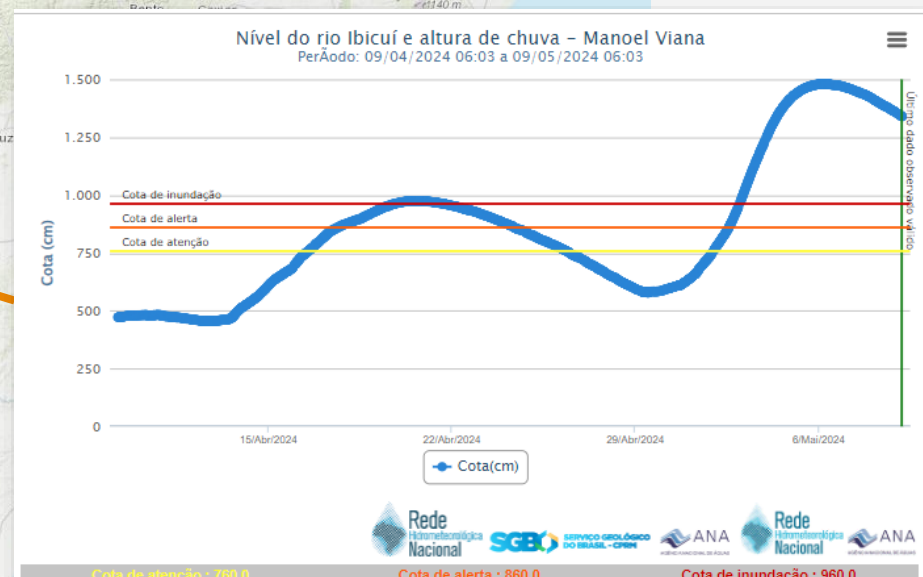
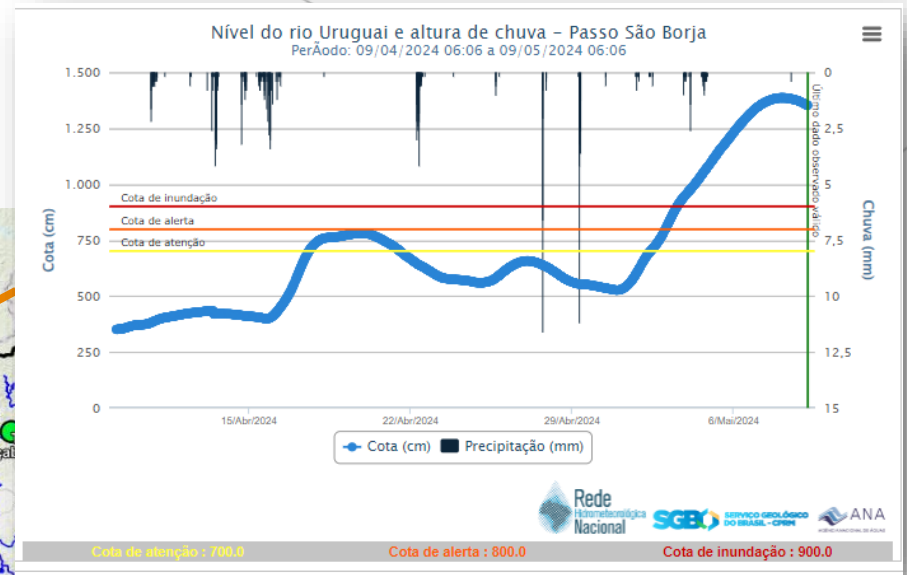
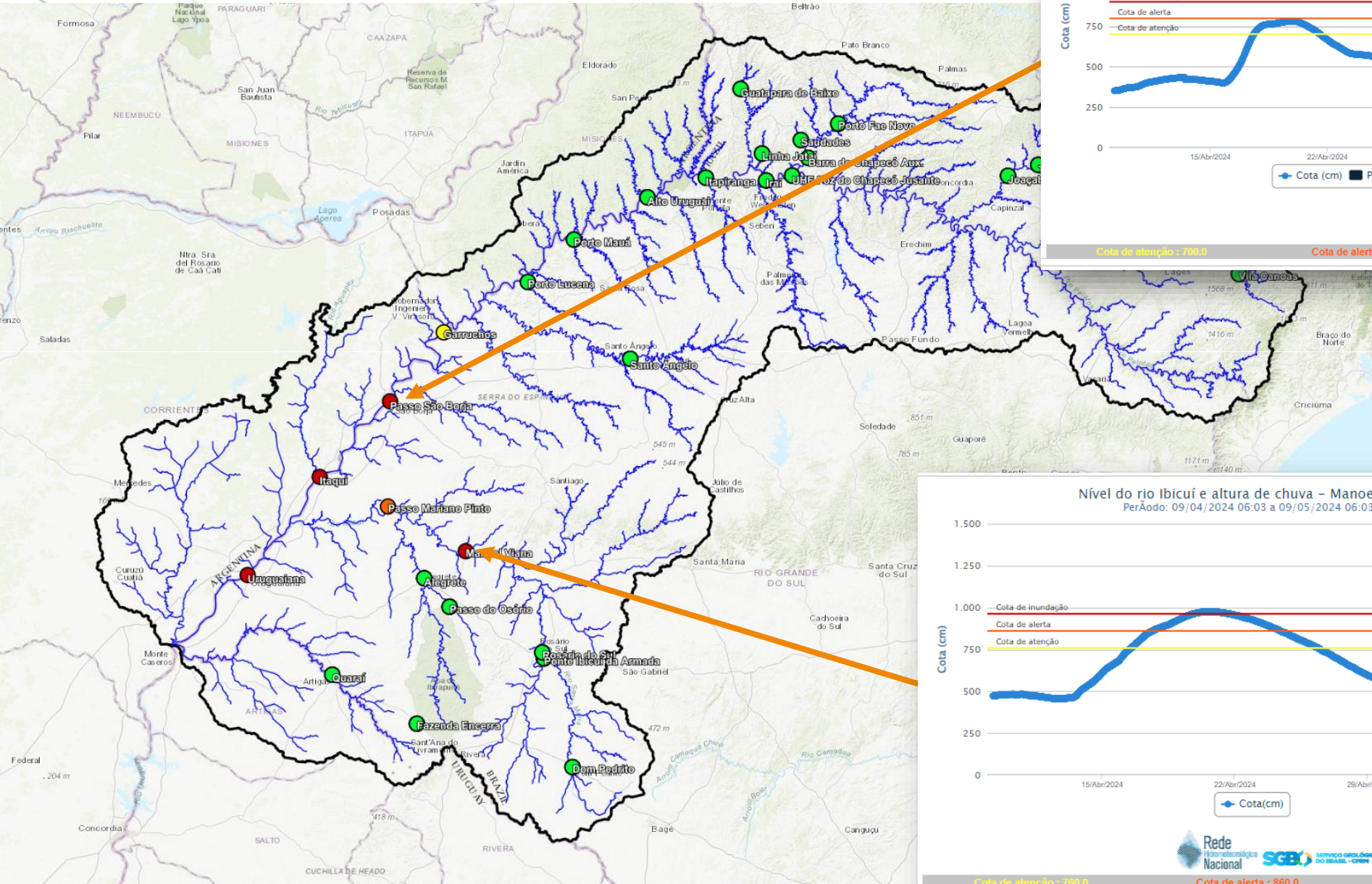
Serviço Geológico do Brasil - CPRM



**MINISTÉRIO DE
MINAS E ENERGIA**



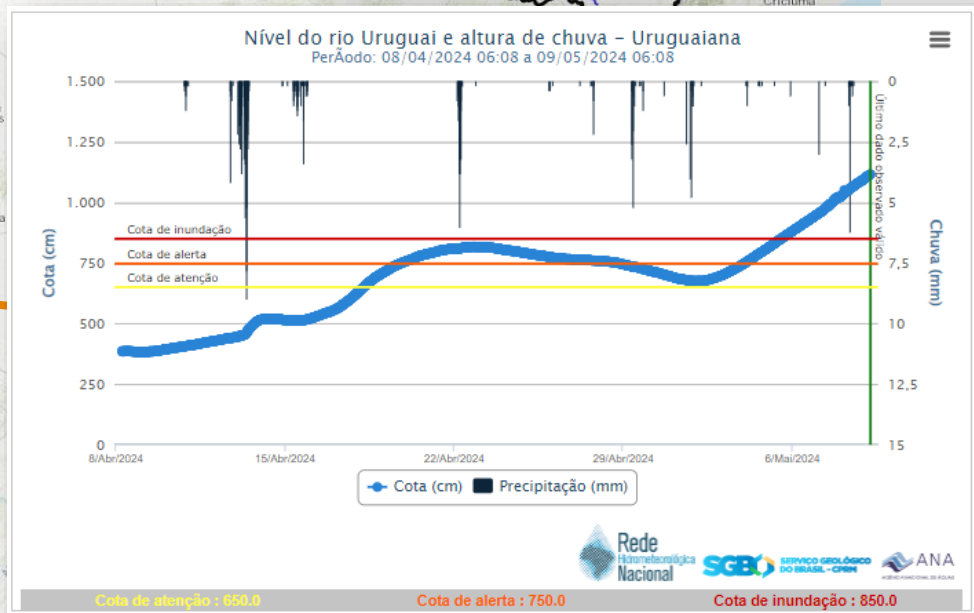
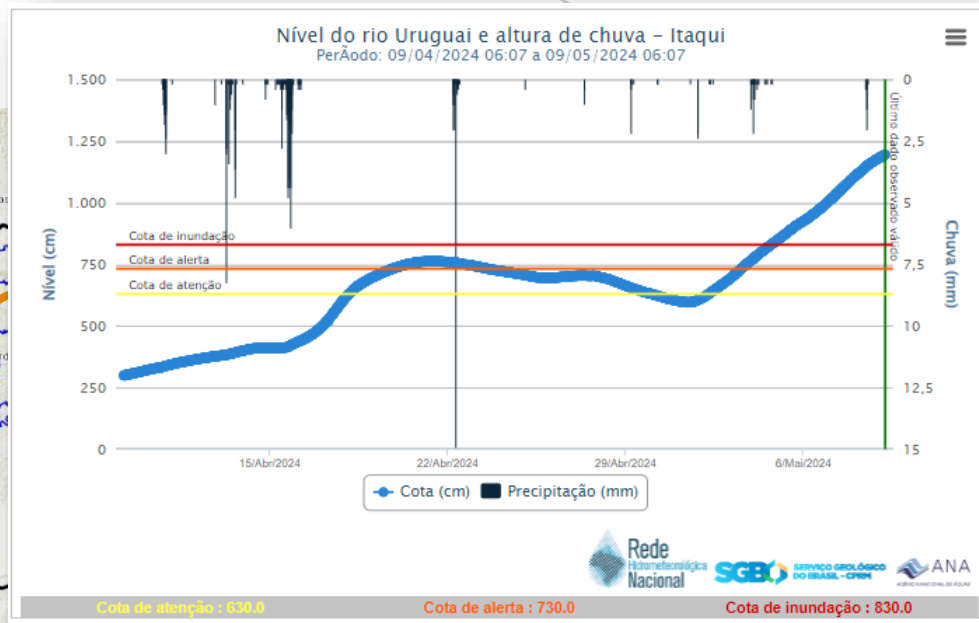
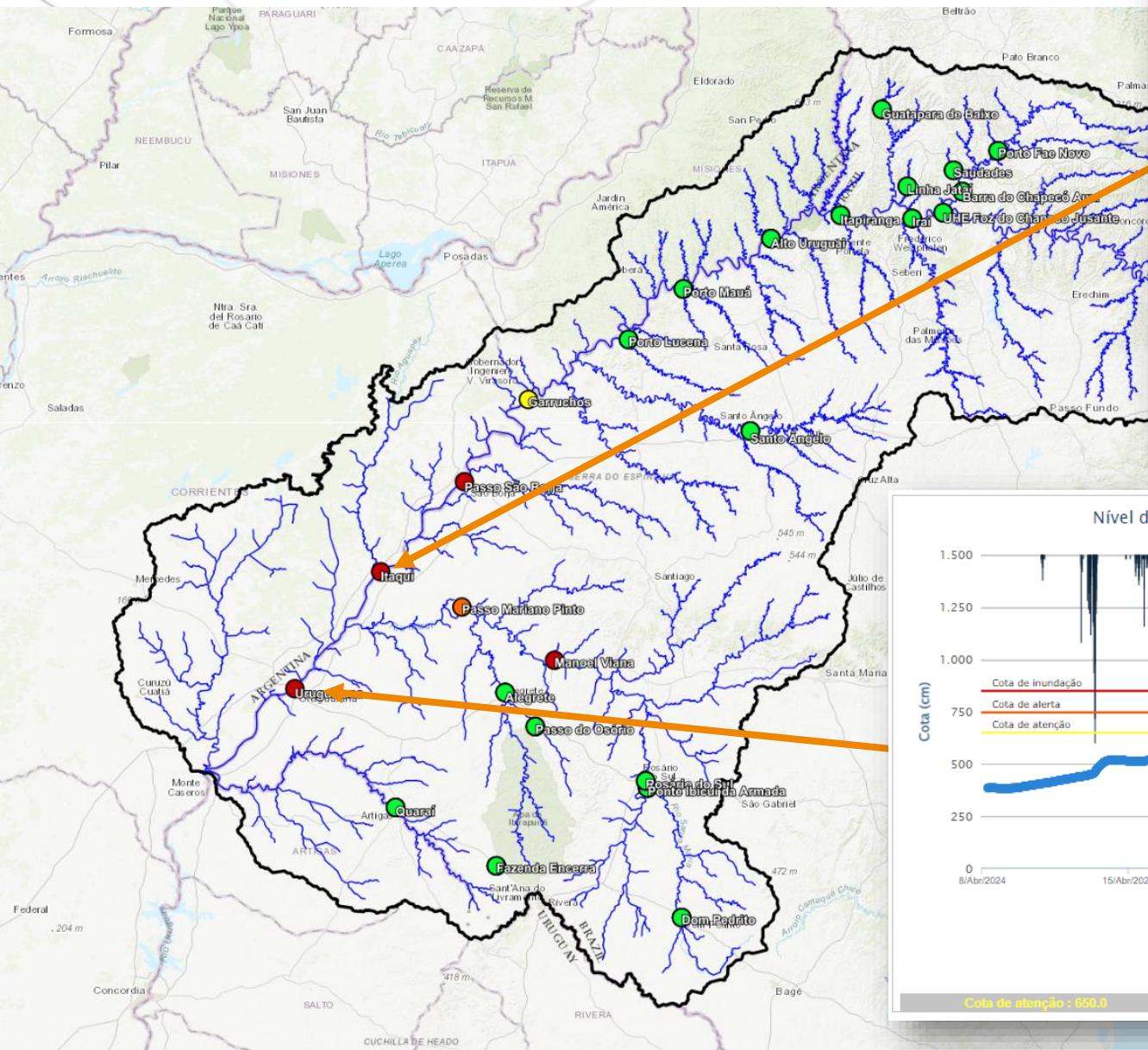
Bacia do rio Uruguai



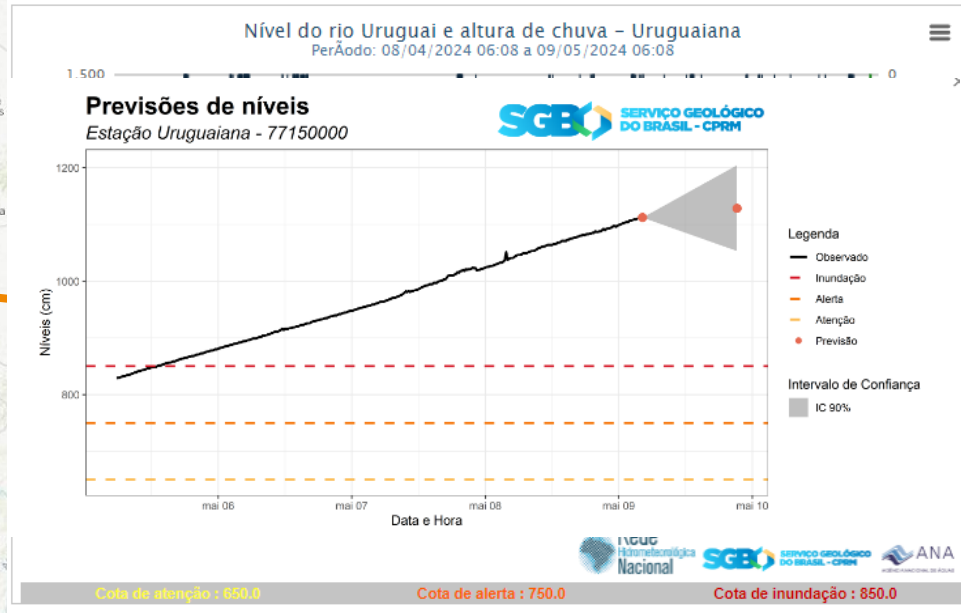
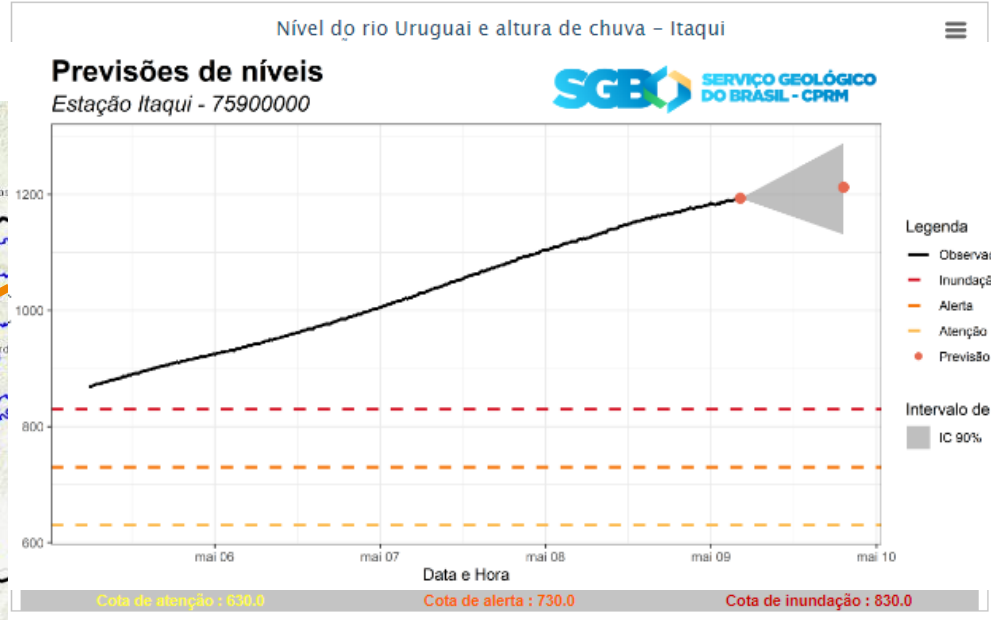
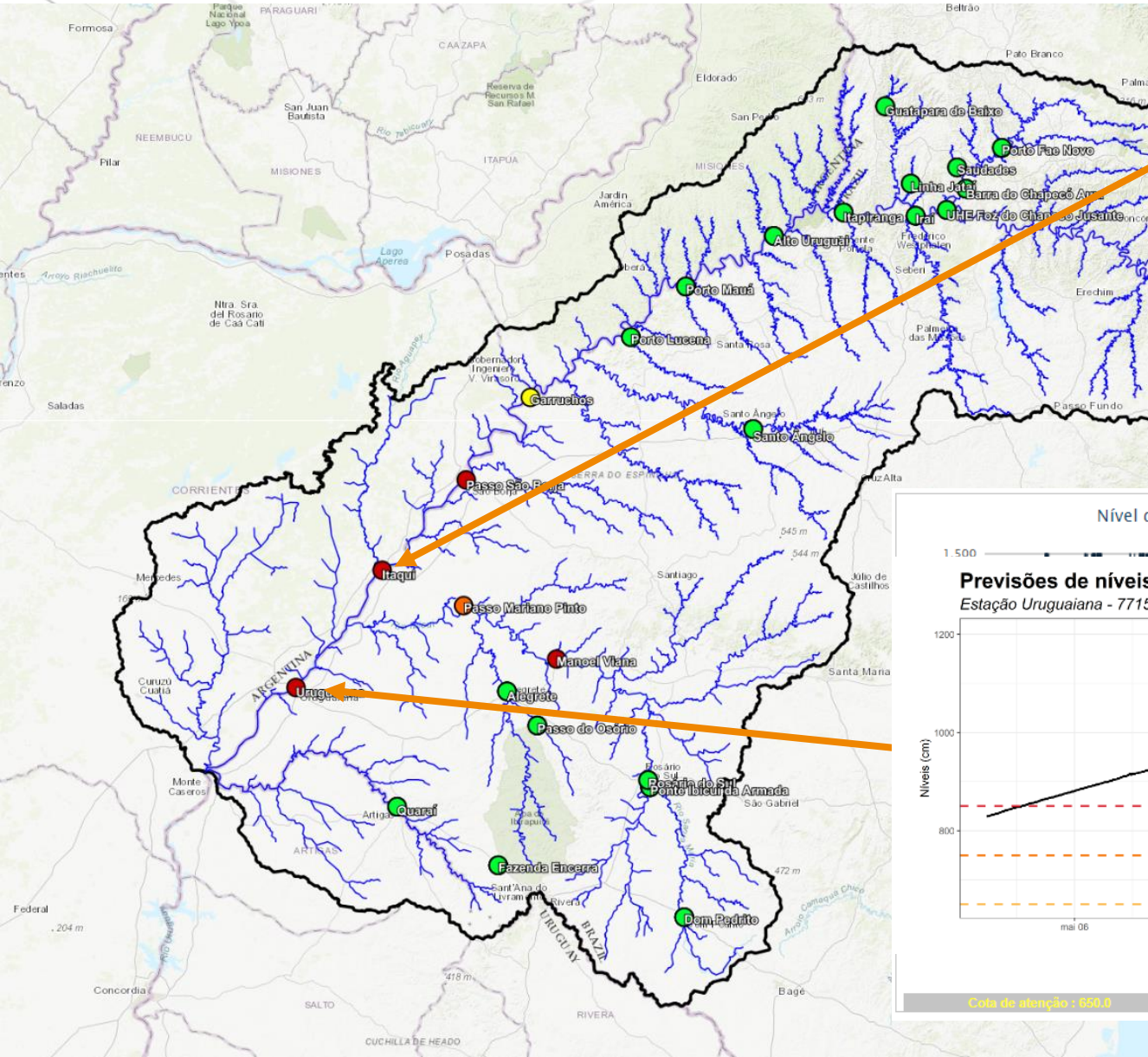
SAH
 SISTEMA DE ALERTA HIDROLÓGICO
 Serviço Geológico do Brasil - CPRM

SGB
 SERVIÇO GEOLÓGICO
 DO BRASIL - CPRM

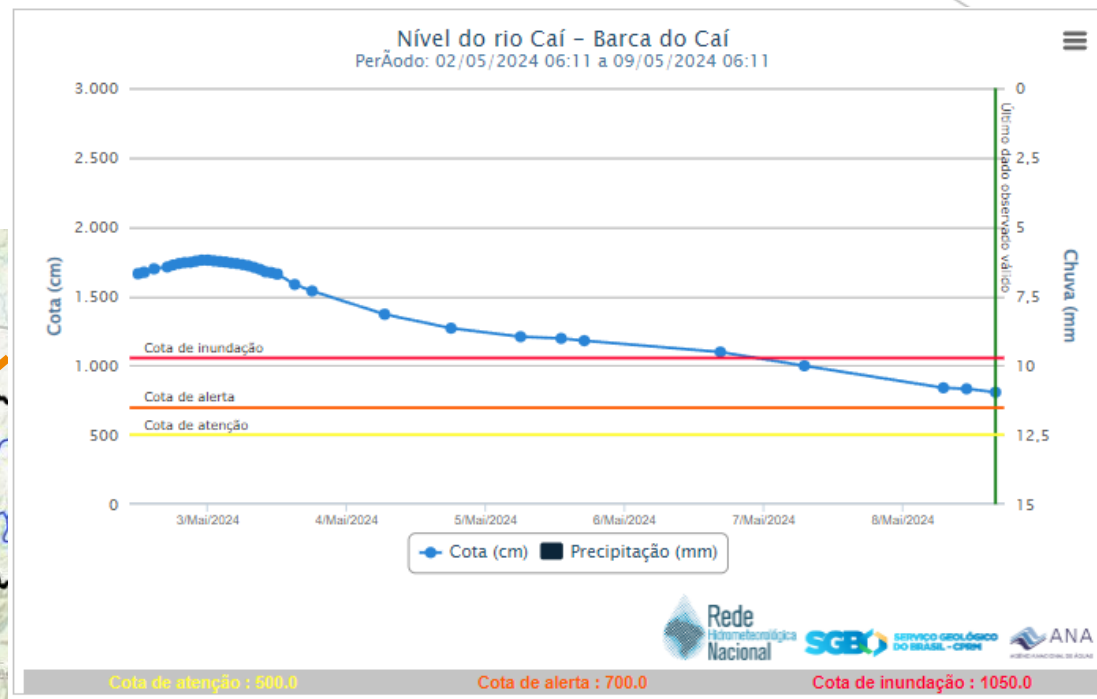
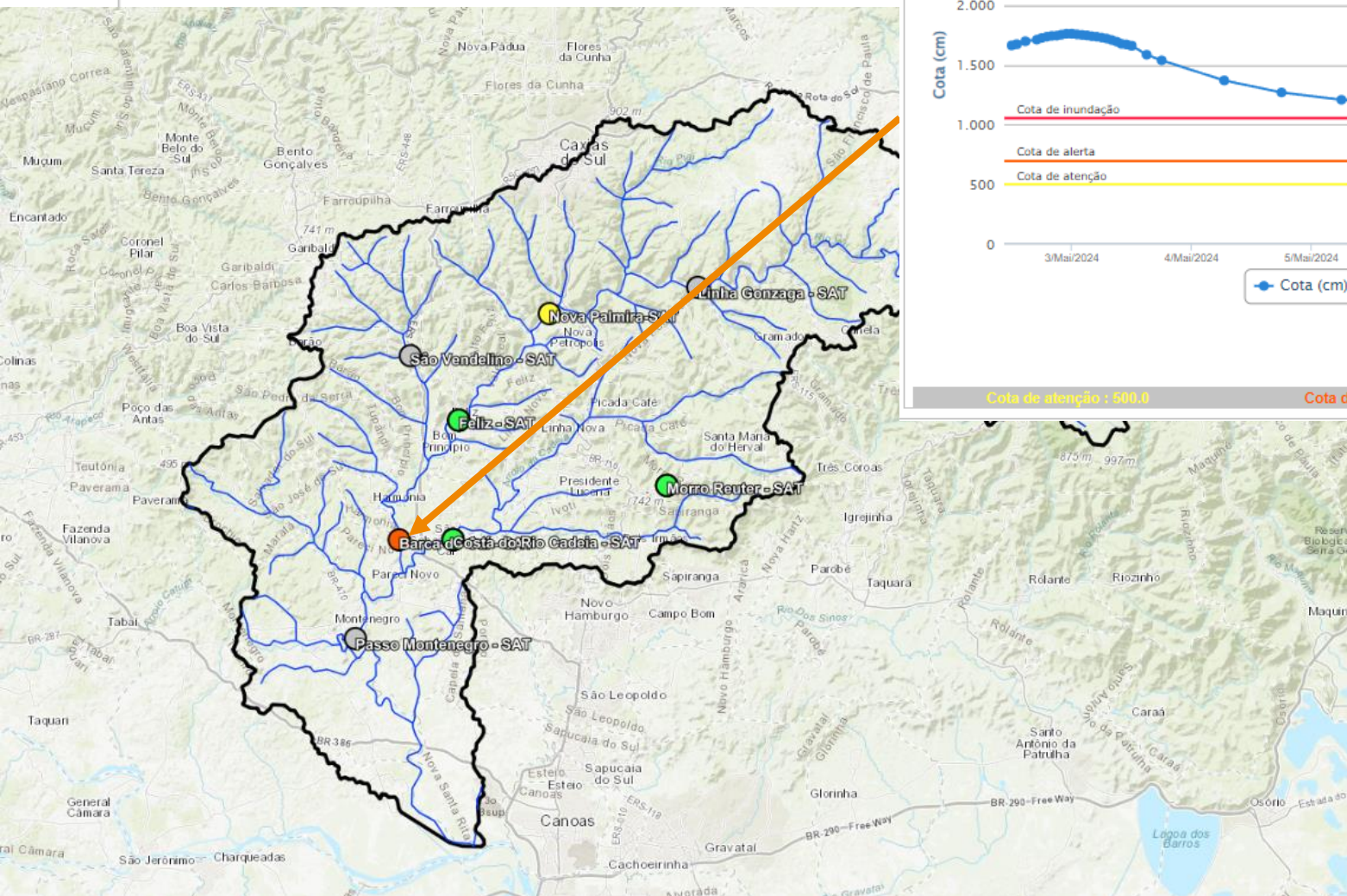
Bacia do rio Uruguai



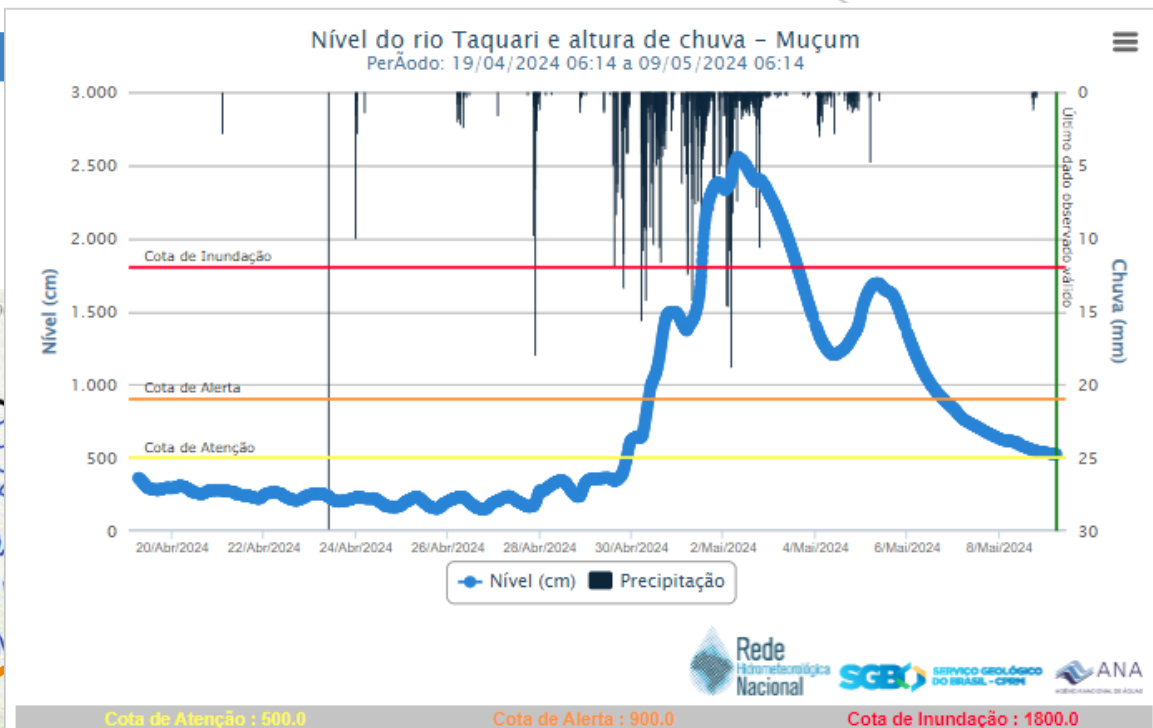
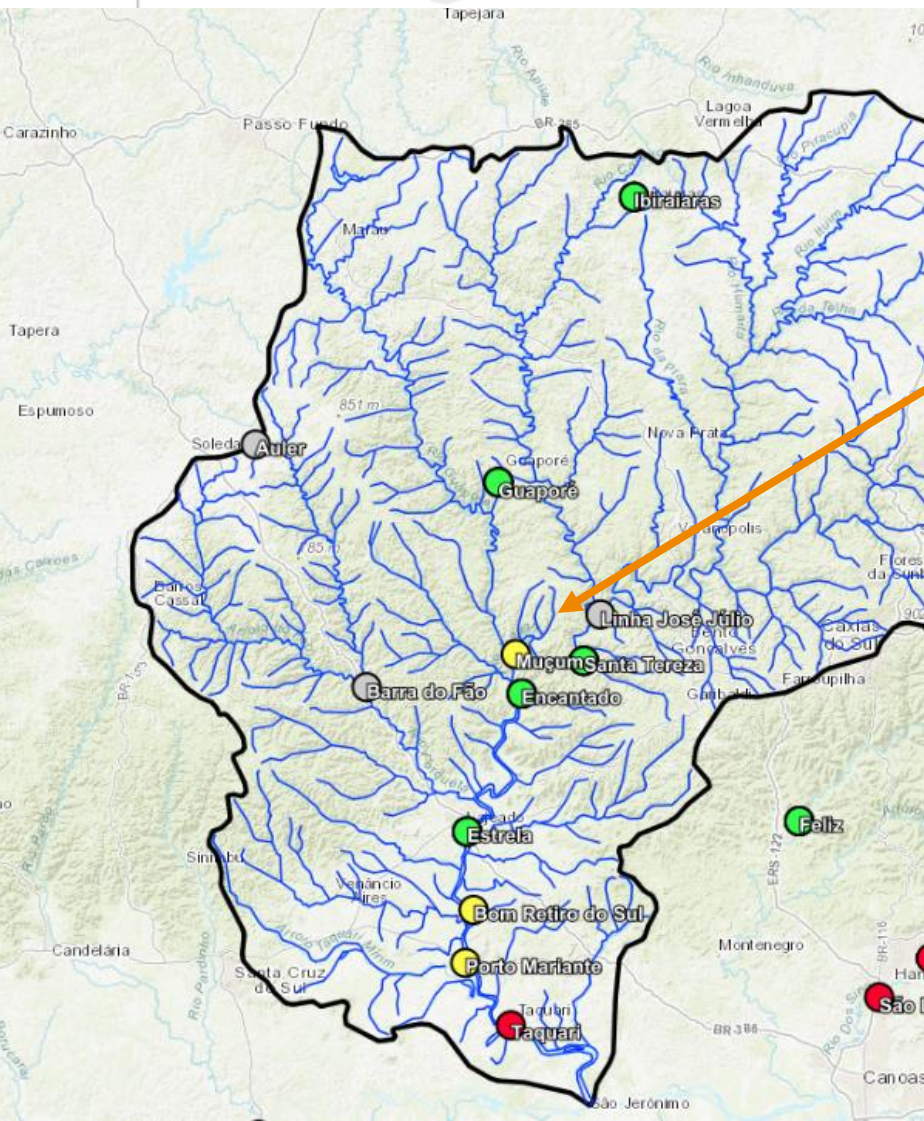
Bacia do rio Uruguai



Bacia do rio Caí



Bacia do rio Taquari

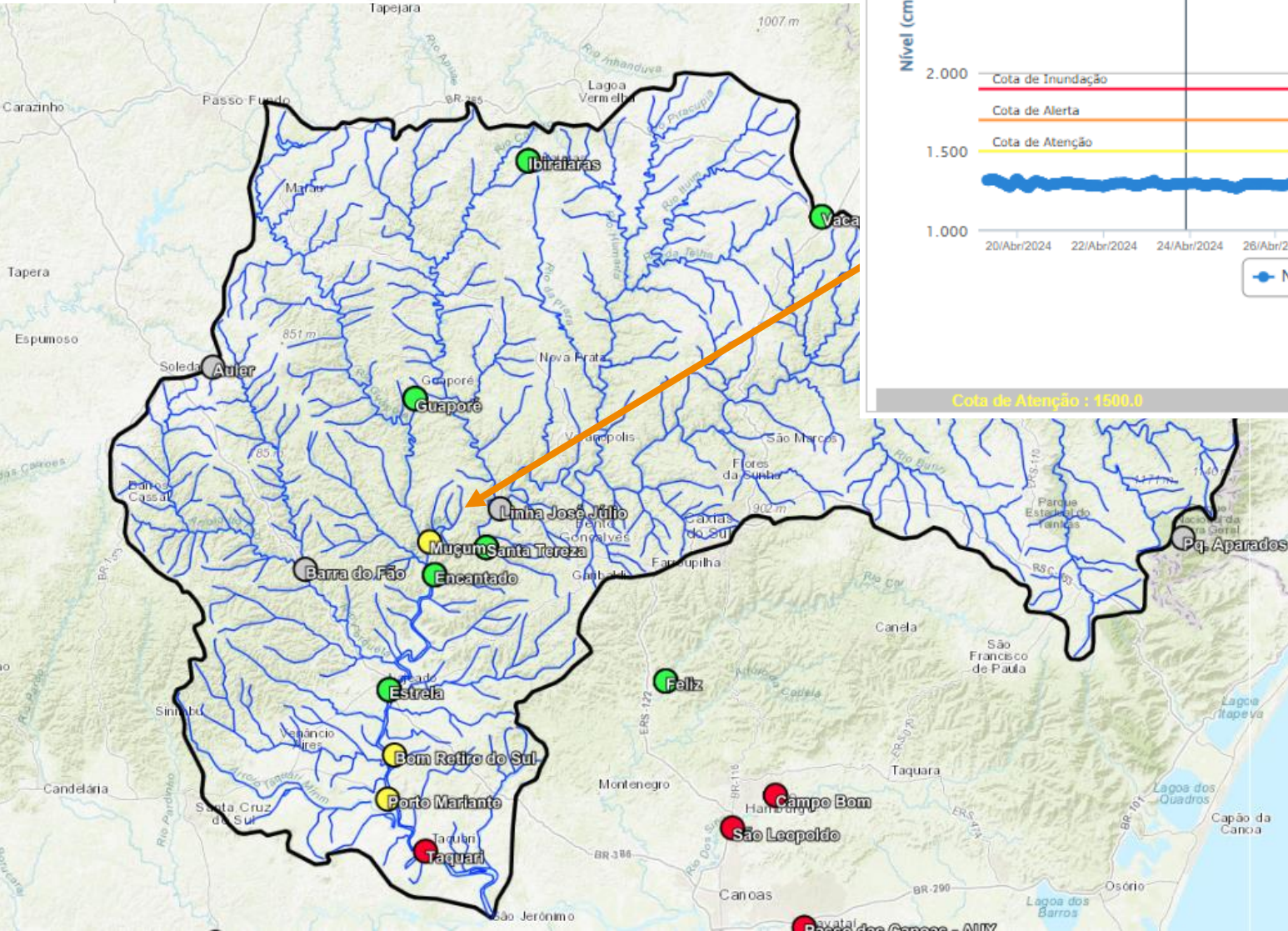


Subiu:
23m no evento
7,5m acima da cota de inundação

Recessão
20m

Bacia do rio Taquari

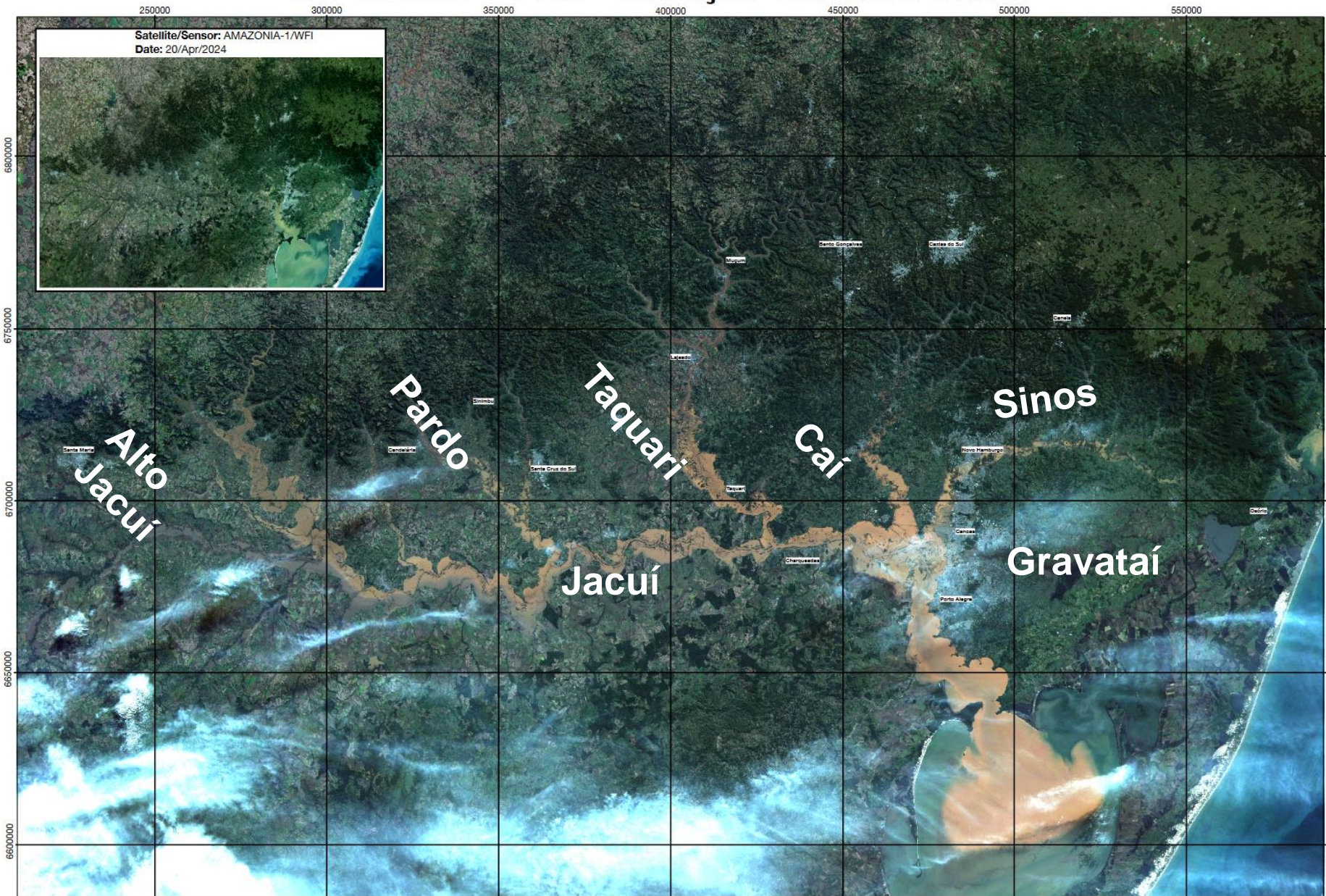
Estrela/Lajeado/Cruzeiro do Sul



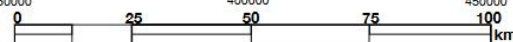
Subiu:
20m no evento
14m acima da cota de inundação

Recessão:
19m

Rio Grande do Sul - Situação em 6/Maio/2024



Satellite/Sensor: CBERS-4/WFI
Date: 06/Mai/2024



Projection: UTM 22S Datum WGS84

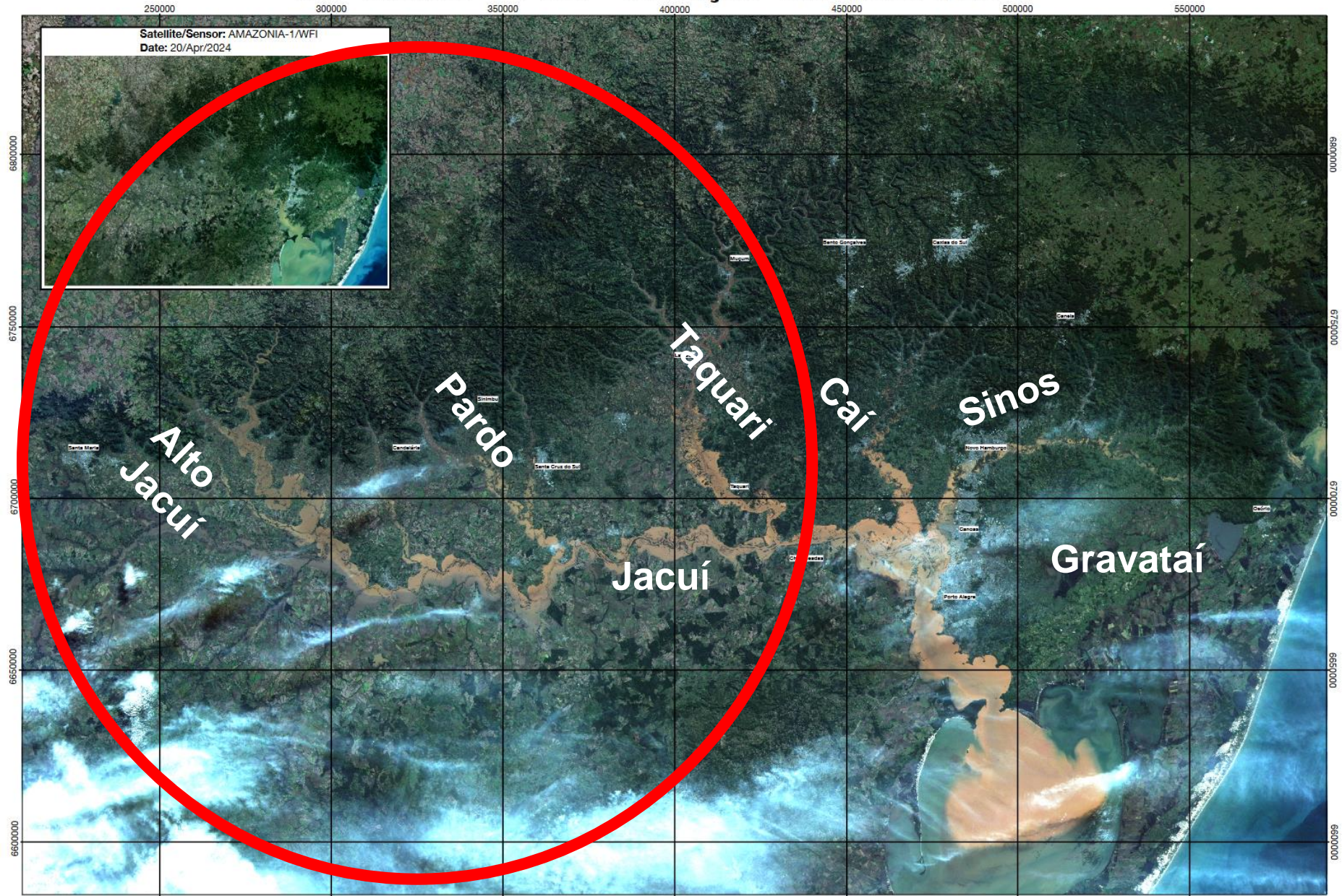
Produced by CGCT/INPE using Digital Image Processing
without any field verification



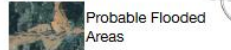
Copyright:
CBERS-4 are under Creative Commons Attribution-
ShareAlike 4.0 International



Rio Grande do Sul - Situação em 6/Maio/2024



Satellite/Sensor: CBERS-4/WFI
Date: 06/Mai/2024



0 25 50 75 100 km

Projection: UTM 22S Datum WGS84
Produced by CGCT/INPE using Digital Image Processing
without any field verification

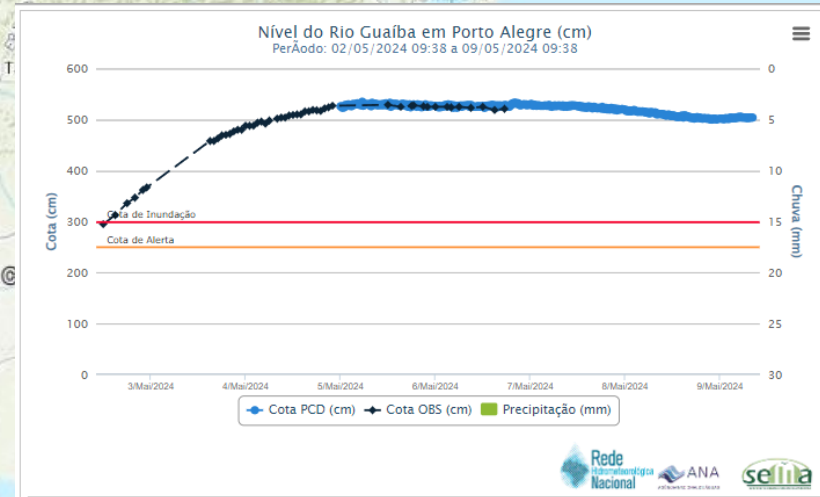
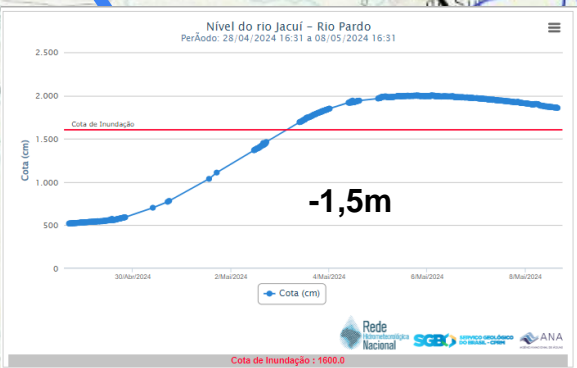
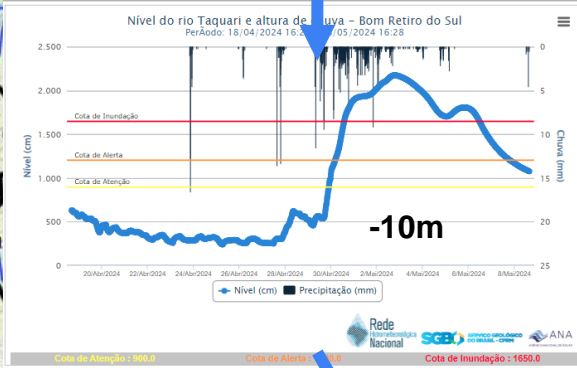
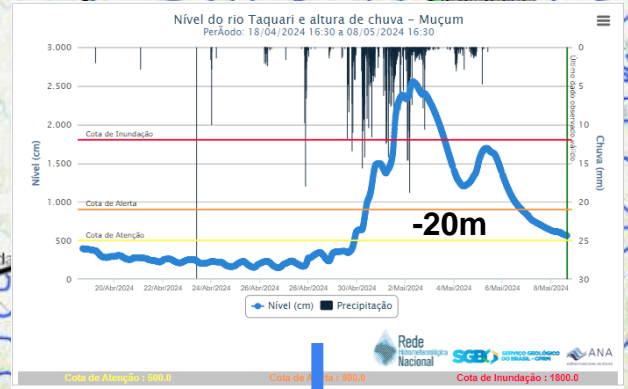


Copyright:
CBERS-4 are under Creative Commons Attribution-ShareAlike 4.0 International



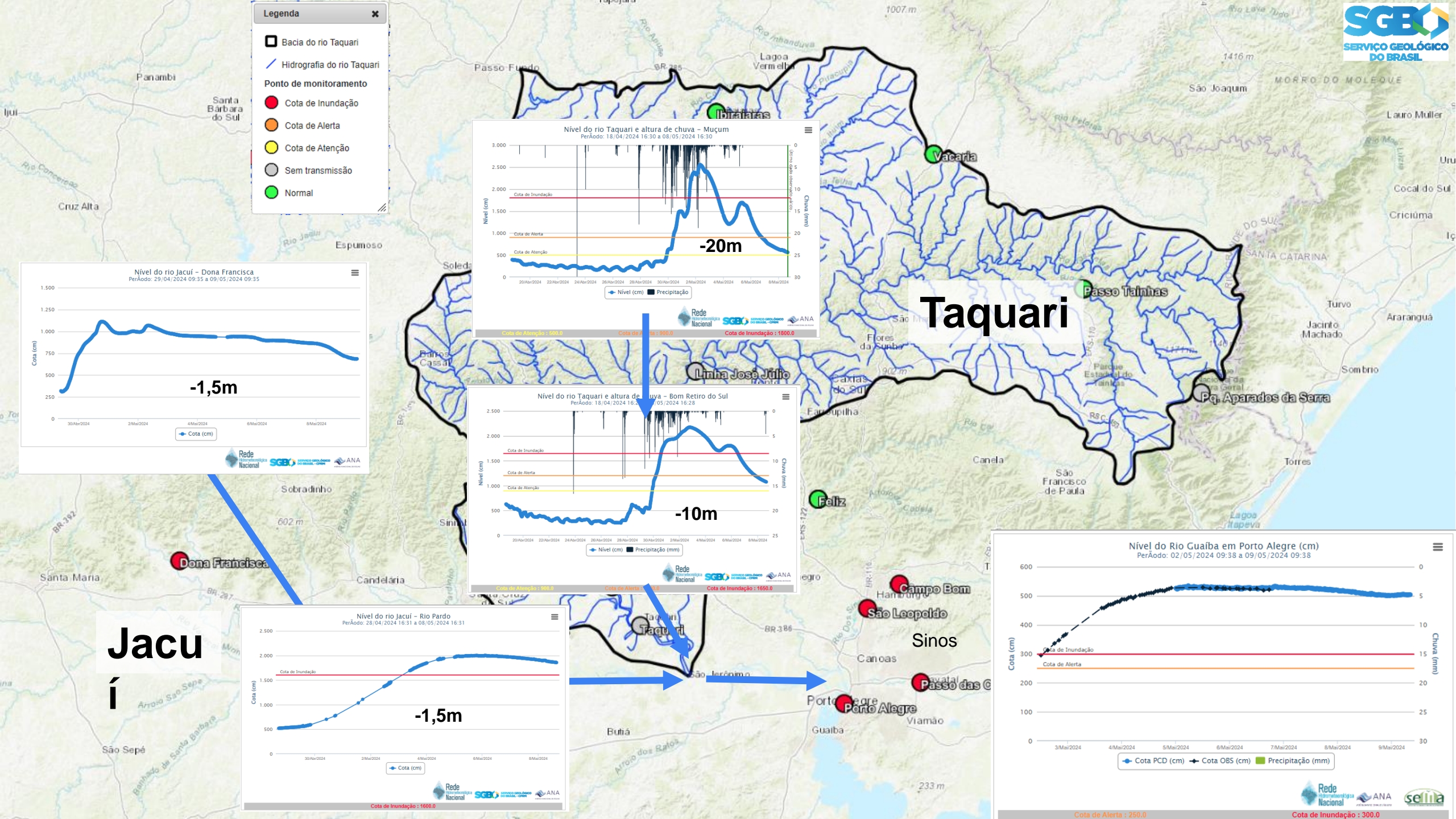
Legenda

- Bacia do rio Taquari
- Hidrografia do rio Taquari
- Ponto de monitoramento
- Cota de Inundação
- Cota de Alerta
- Cota de Atenção
- Sem transmissão
- Normal

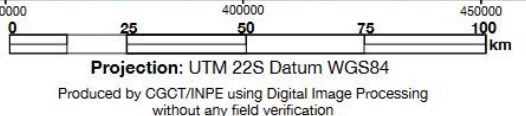
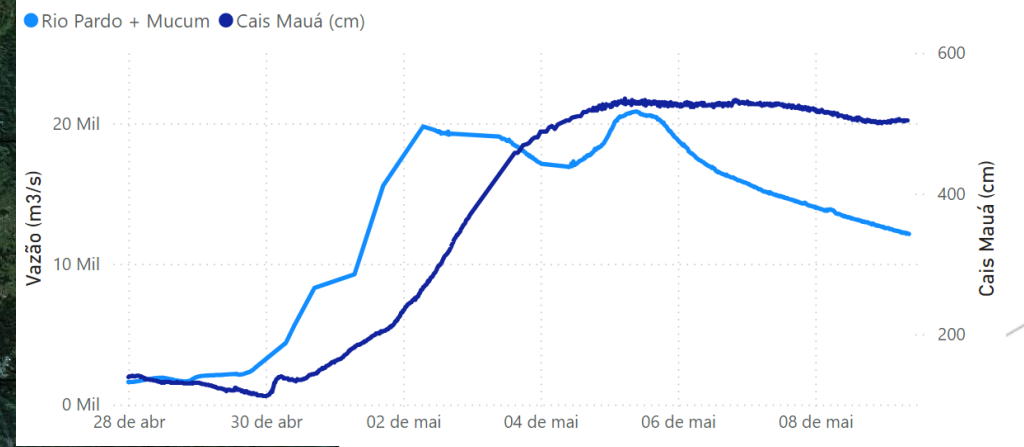
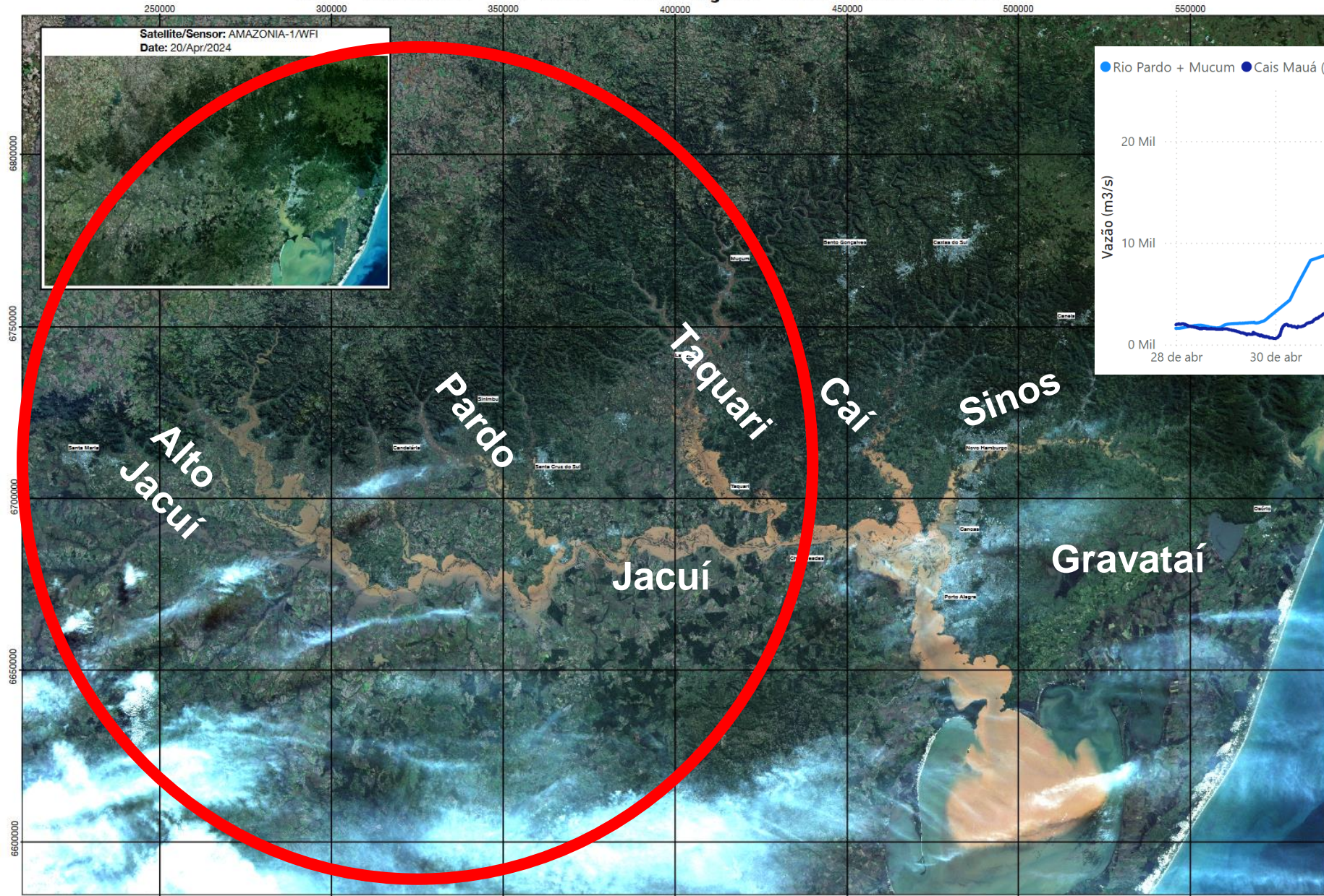


Taquari

Jacuí

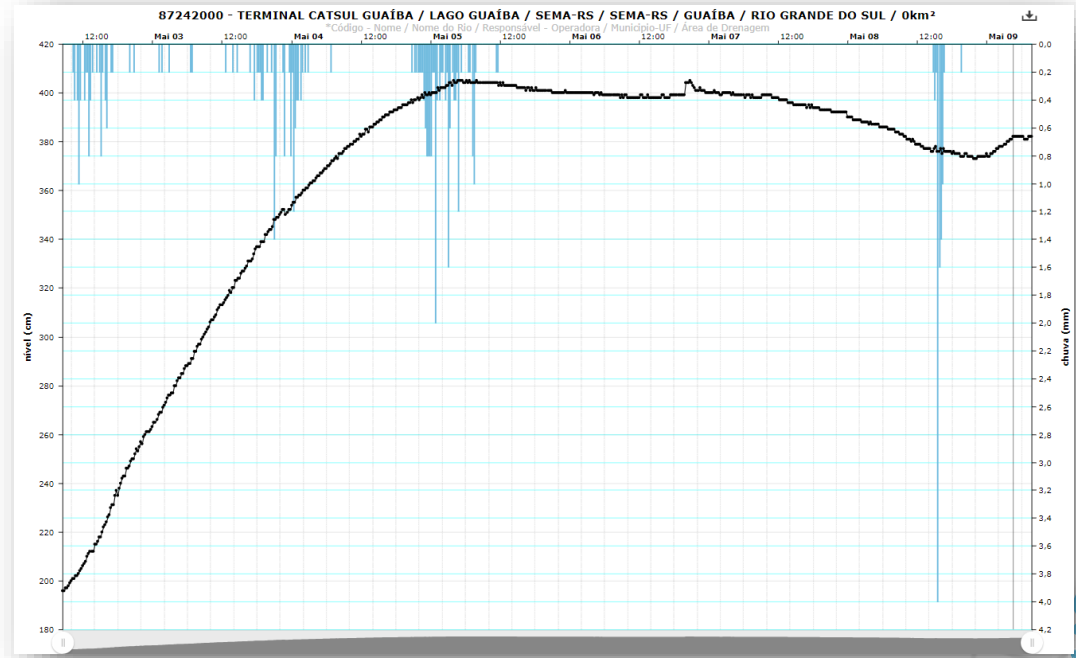
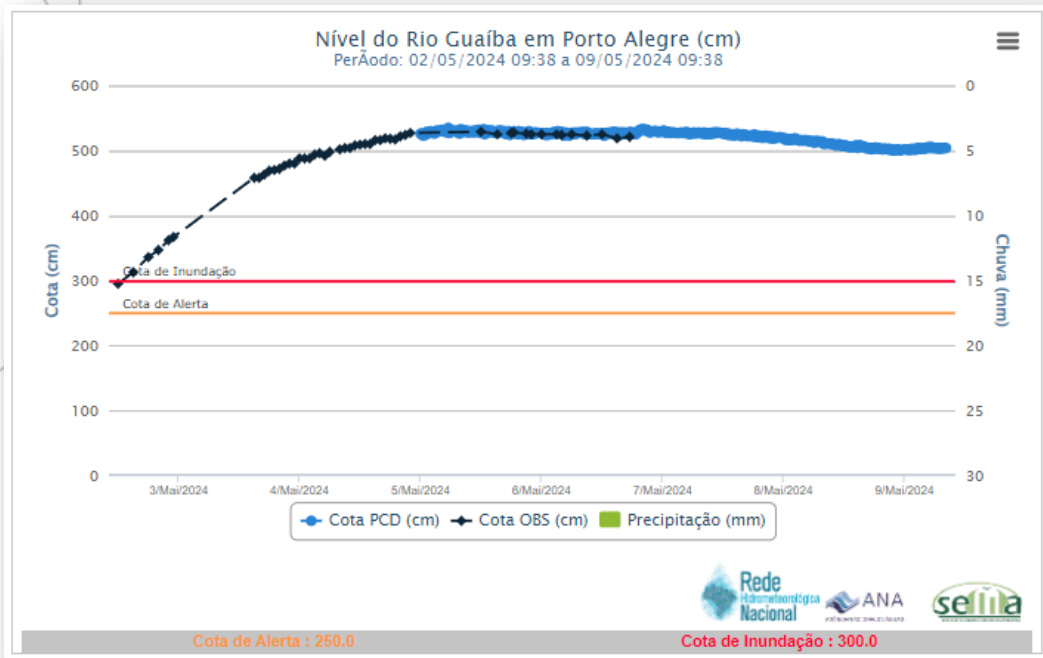
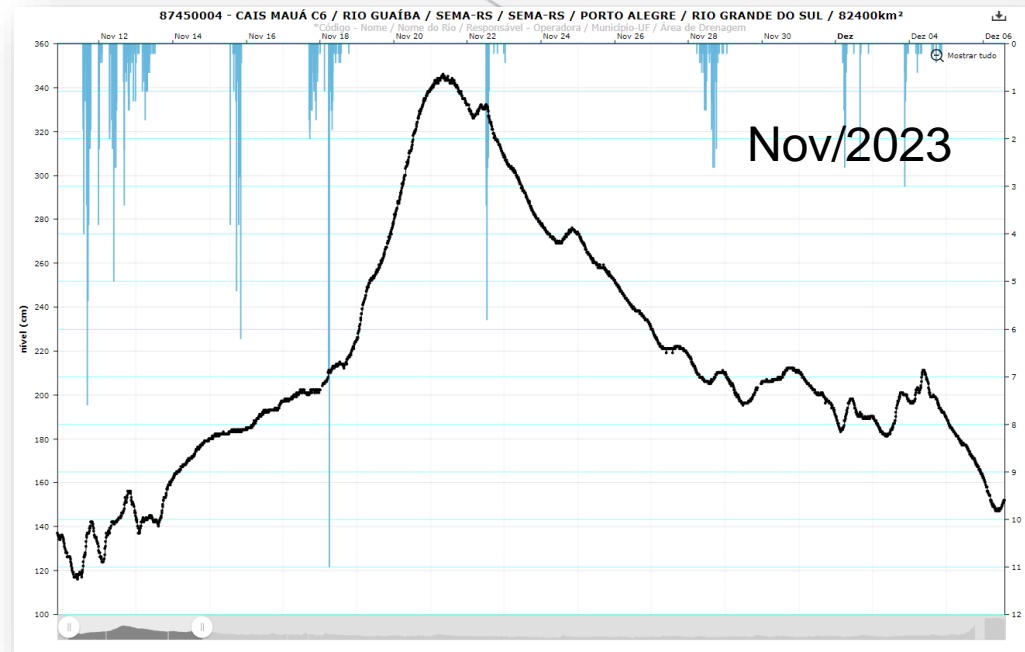
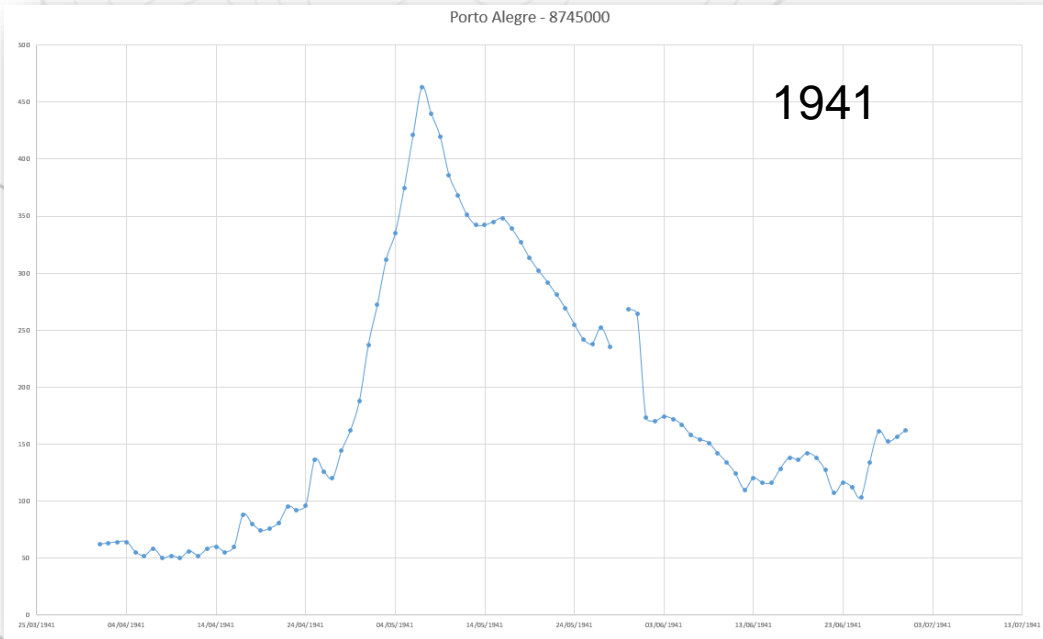


Rio Grande do Sul - Situação em 6/Maio/2024

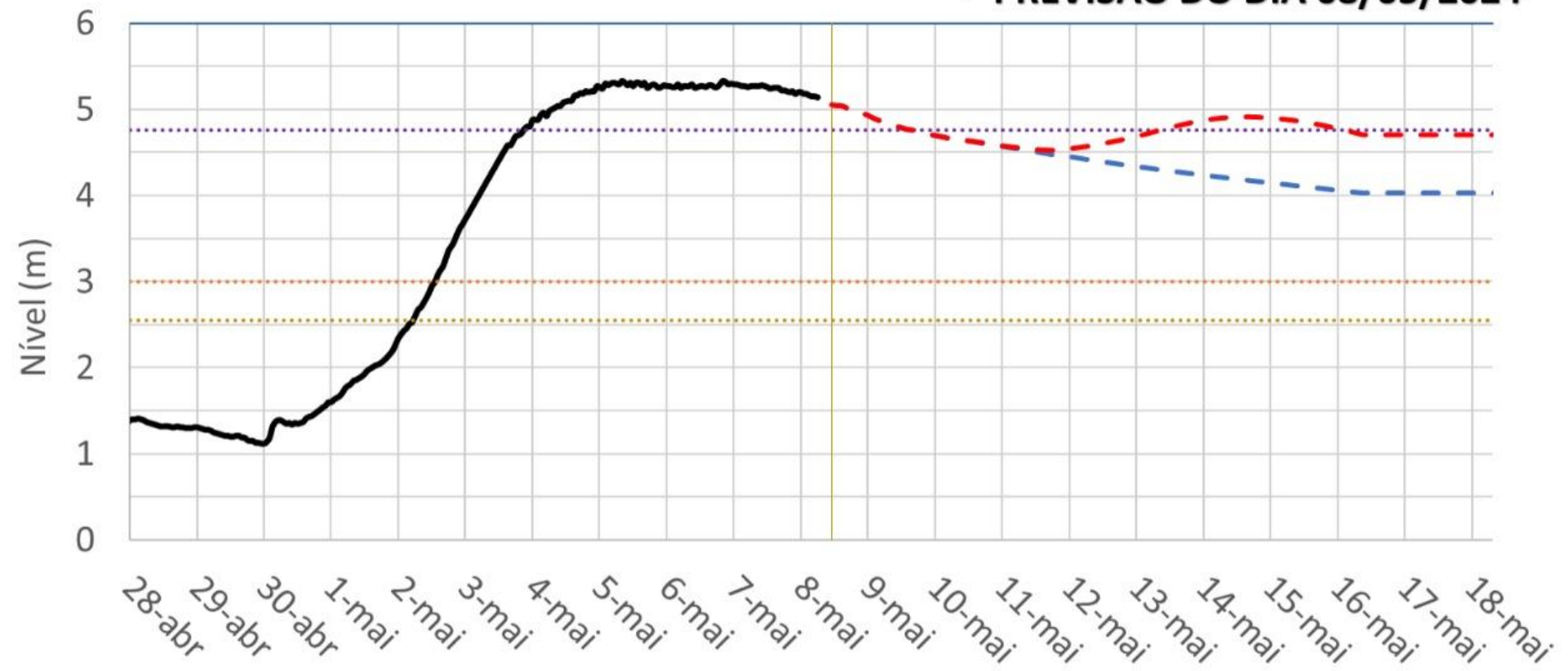


Copyright:
CBERS-4 are under Creative Commons Attribution-ShareAlike 4.0 International





→ PREVISÃO DO DIA 08/05/2024

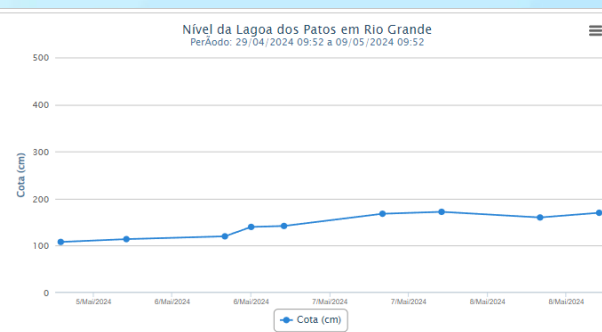
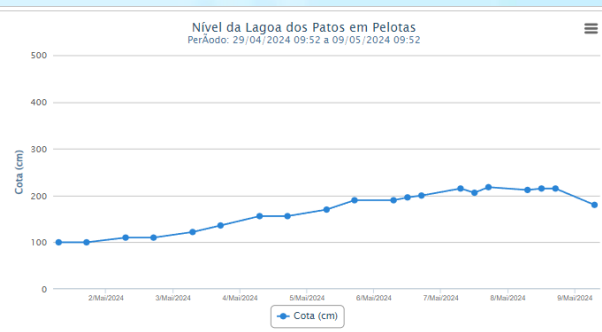
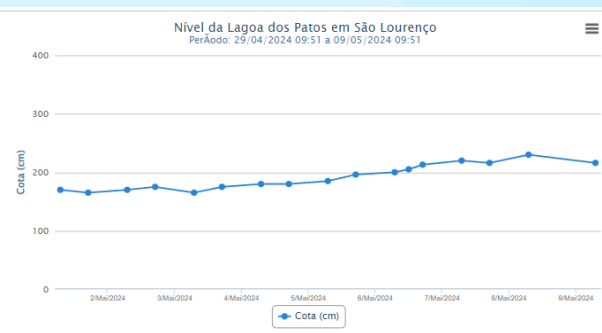
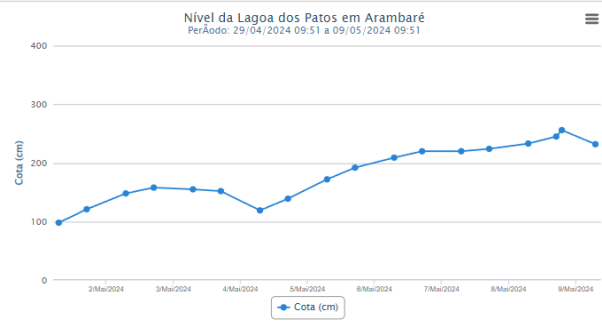
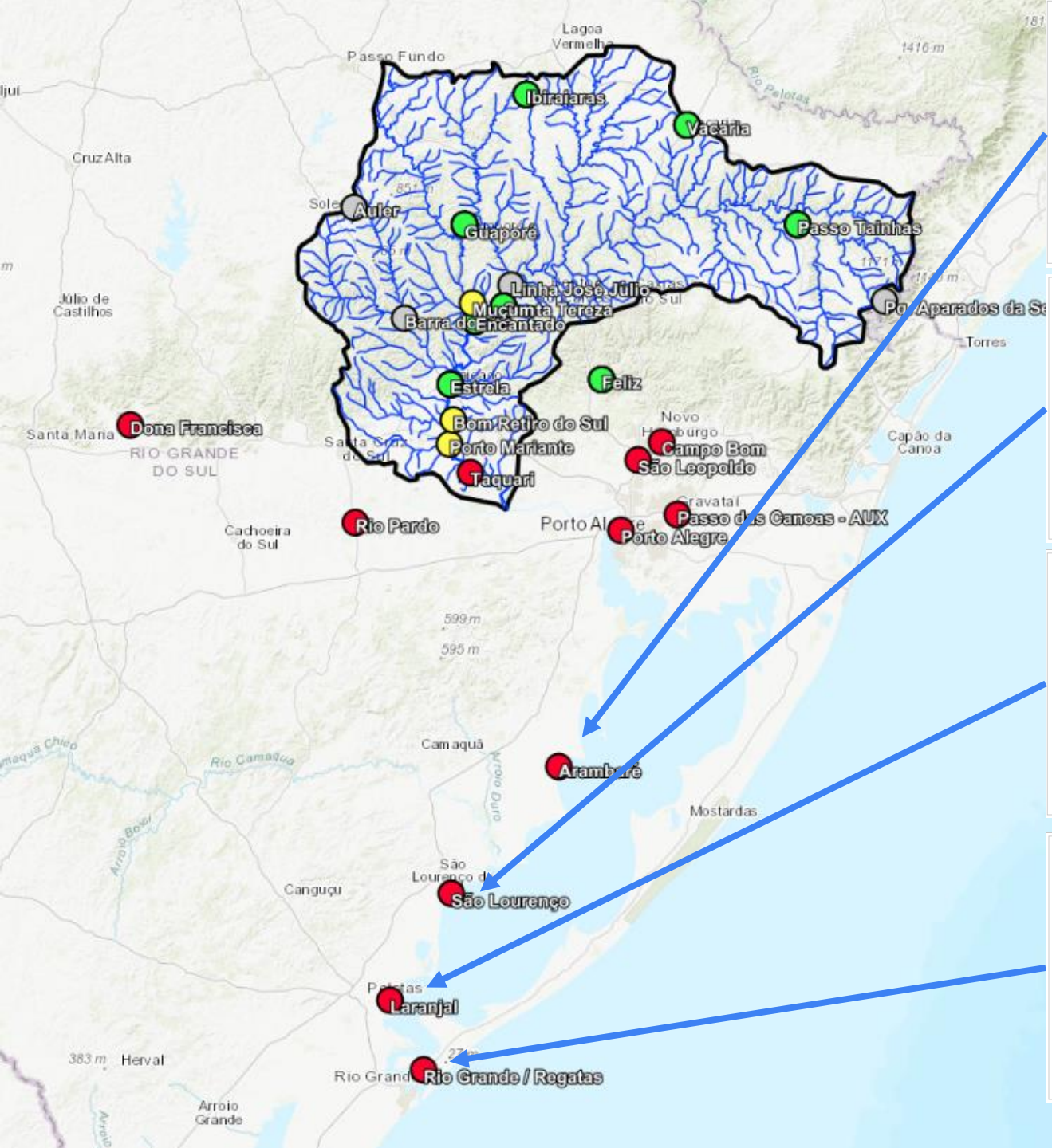


- Guaíba - Observado Cais Mauá (87450004)
- Cheia de 1941 - 4,76 m
- Cota máxima do sistema de proteção - 6,00 m
- - - Previsão de hoje - sem chuva prevista

- Alerta - 2,55 m
- Inundação - 3,00 m
- Início da Previsão
- - - Previsão de hoje - com chuva prevista



Lagoa dos Patos



SERVIÇO GEOLÓGICO DO BRASIL
HÁ 51 ANOS TRABALHANDO PARA O
DESENVOLVIMENTO DO PAÍS



Artur Matos
Pesquisador em Geociências

Serviço Geológico do Brasil – sgb

www.sgb.gov.br



MINISTÉRIO DE
MINAS E ENERGIA

