



# Sala de Crise – Região Nordeste

MARCUS SUASSUNA SANTOS



MINISTÉRIO DE  
MINAS E ENERGIA



# SUMARIO

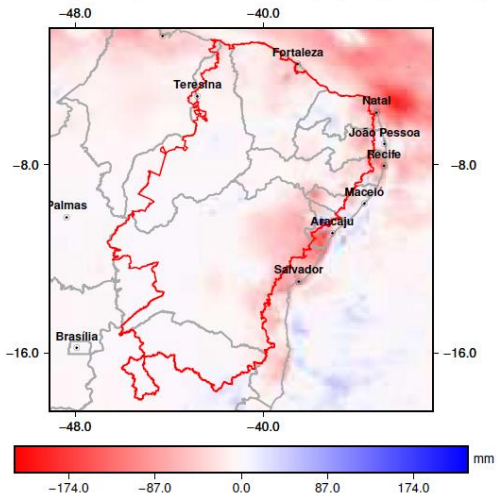
Níveis dos rios

Anomalias de chuvas em bacias

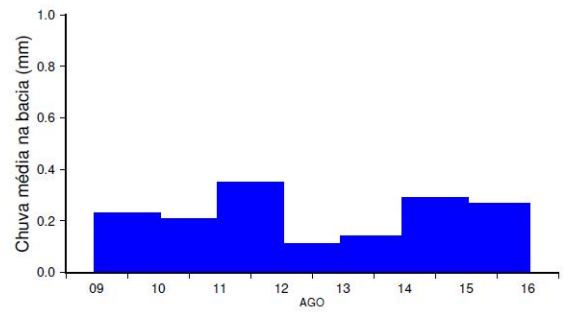
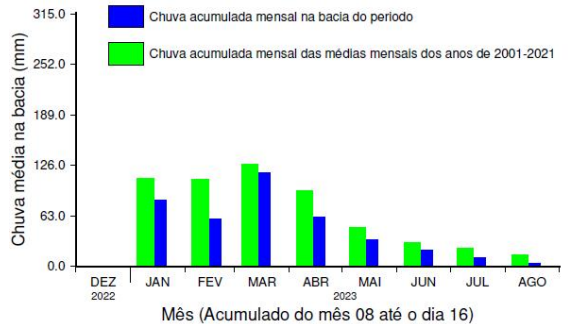
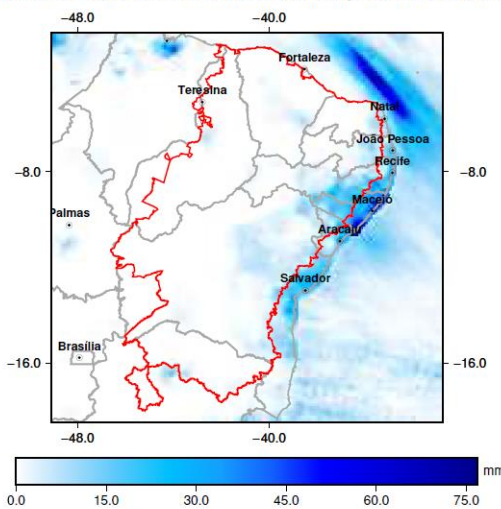
Níveis dos aquíferos

# Anomalias de Chuvas sobre o Semiárido

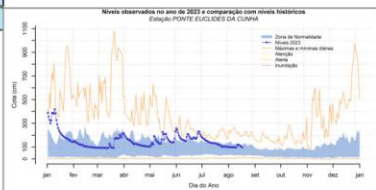
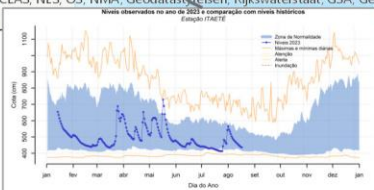
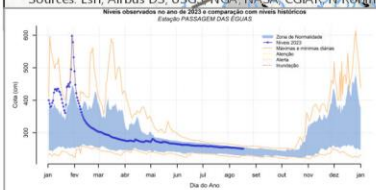
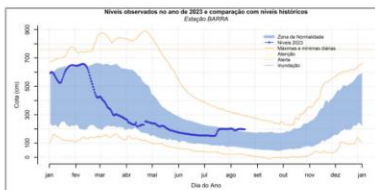
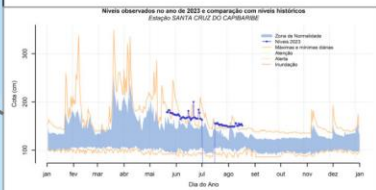
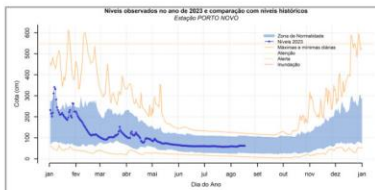
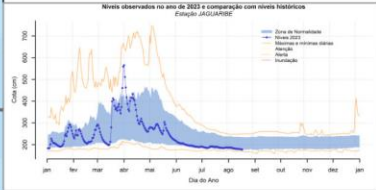
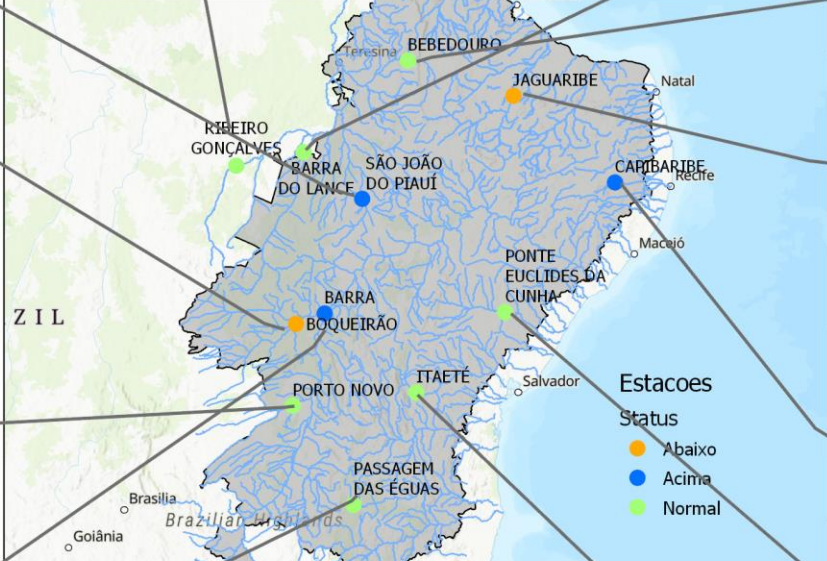
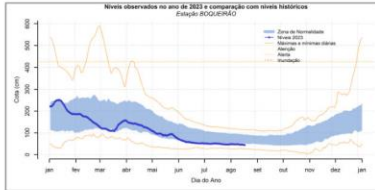
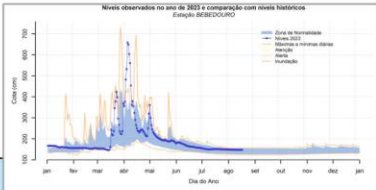
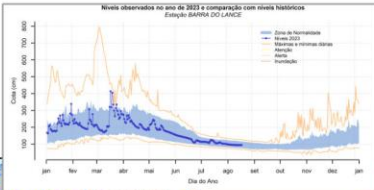
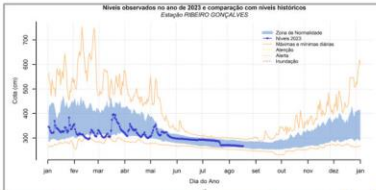
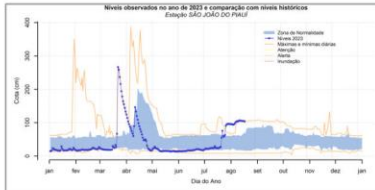
Anomalia de chuva MERGE (CPTEC-INPE) de -11.5 mm no mês 07 na AD sem\_código - LIM\_Semiárido\_OFICIAL\_POLIGONAL



Chuva Acumulada do MERGE (CPTEC-INPE) de 1.6 mm em 7 dias na AD sem\_código - LIM\_Semiárido\_OFICIAL\_POLIGONAL

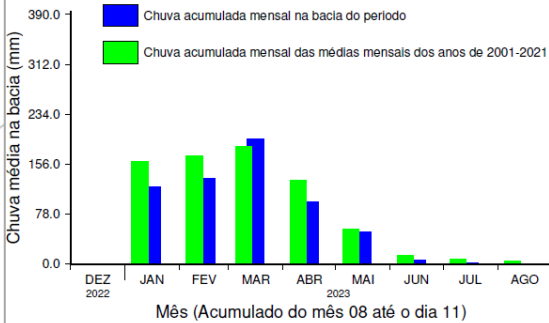
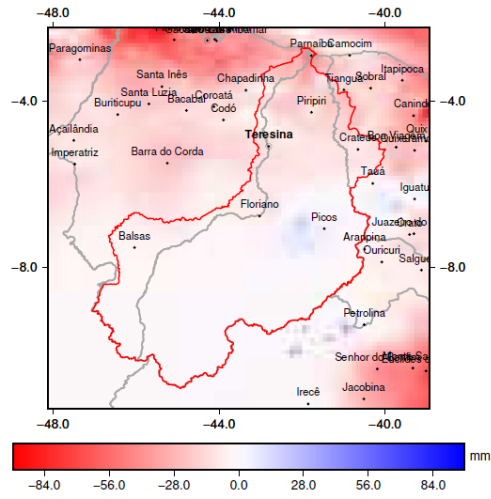


# Níveis dos rios

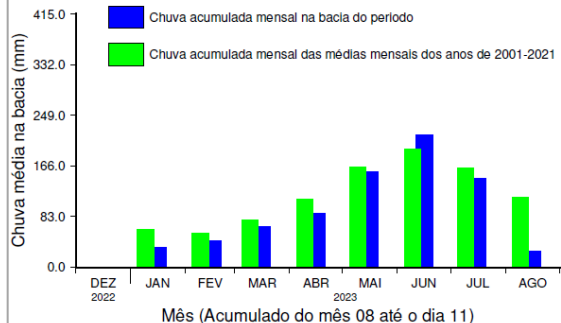
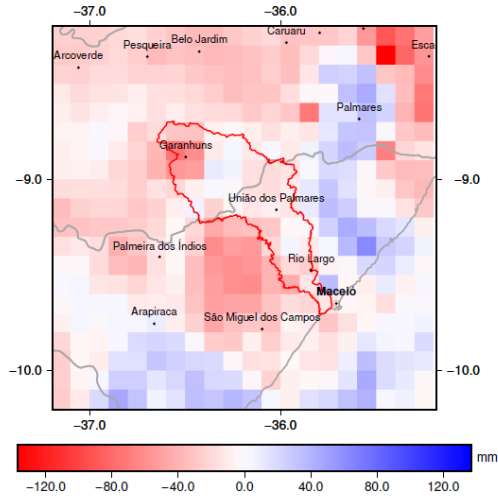


# Anomalias de Chuvas em bacias do nordeste com SAHs

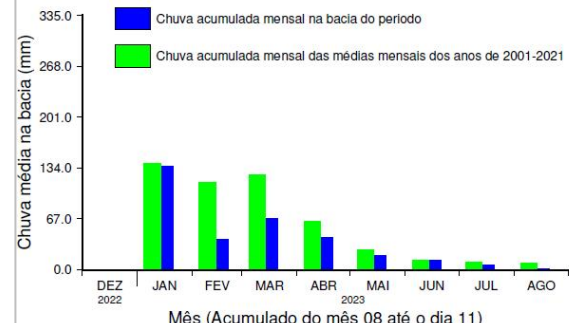
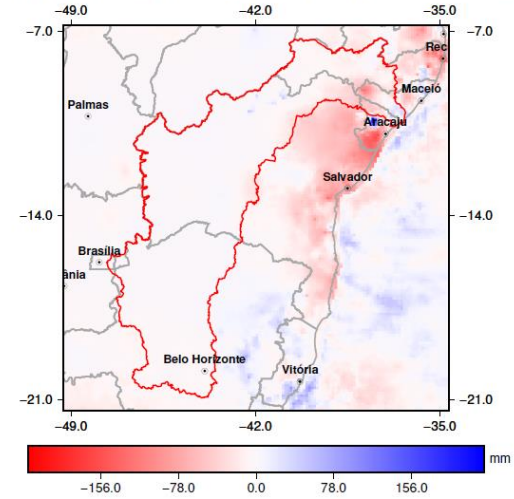
Anomalia de chuva MERGE (CPTEC-INPE) de -4.6 mm no mês 07 na AD sem\_código - ALERTA\_CPRM\_PARNAIBA



Anomalia de chuva MERGE (CPTEC-INPE) de -17.6 mm no mês 07 na AD sem\_código - ALERTA\_CPRM\_MUNDAU



Anomalia de chuva MERGE (CPTEC-INPE) de -4.5 mm no mês 07 na AD sem\_código - ALERTA\_CPRM\_SAO FRANCISCO

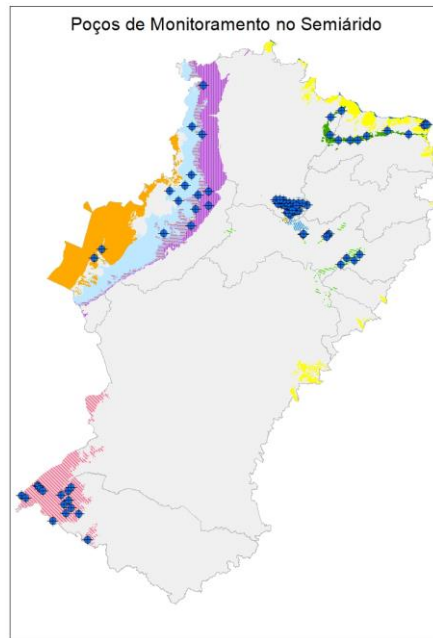
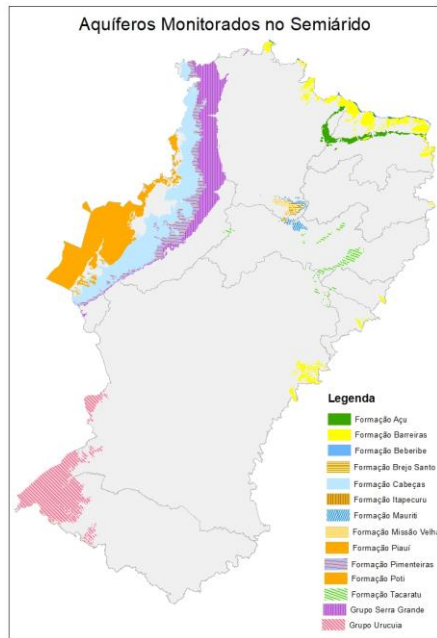


# Níveis dos aquíferos

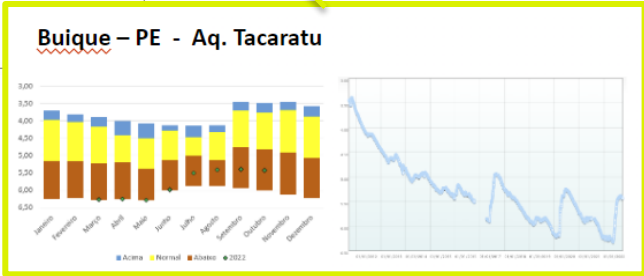
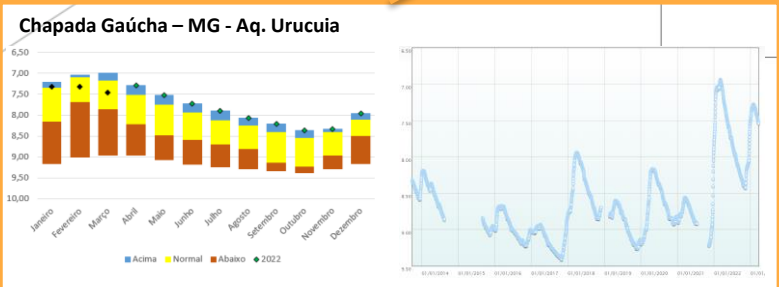
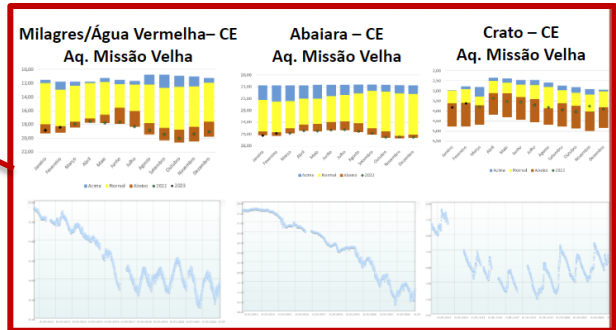
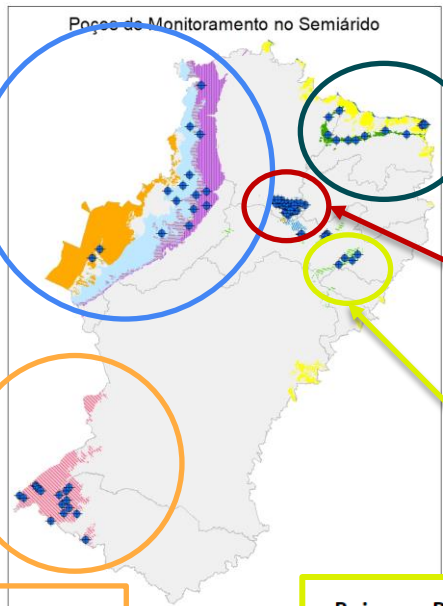
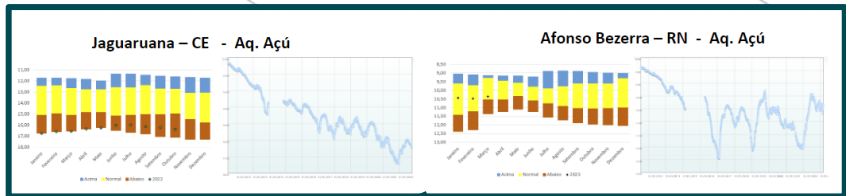
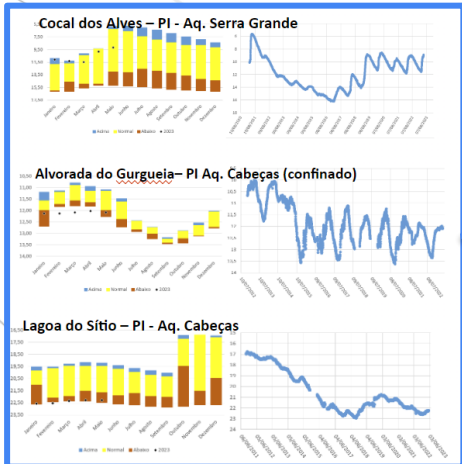


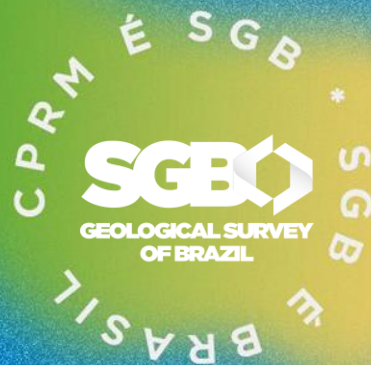
157 poços, sendo 79 pontos de monitoramento das águas subterrâneas no semiárido. Totais:

- CE: 30 poços
- PE, RN, AL, PB: 31 poços
- BA, SE: 72
- PI, MA: 24



# Níveis dos aquíferos





OBRIGADO.



MINISTÉRIO DE  
MINAS E ENERGIA

