



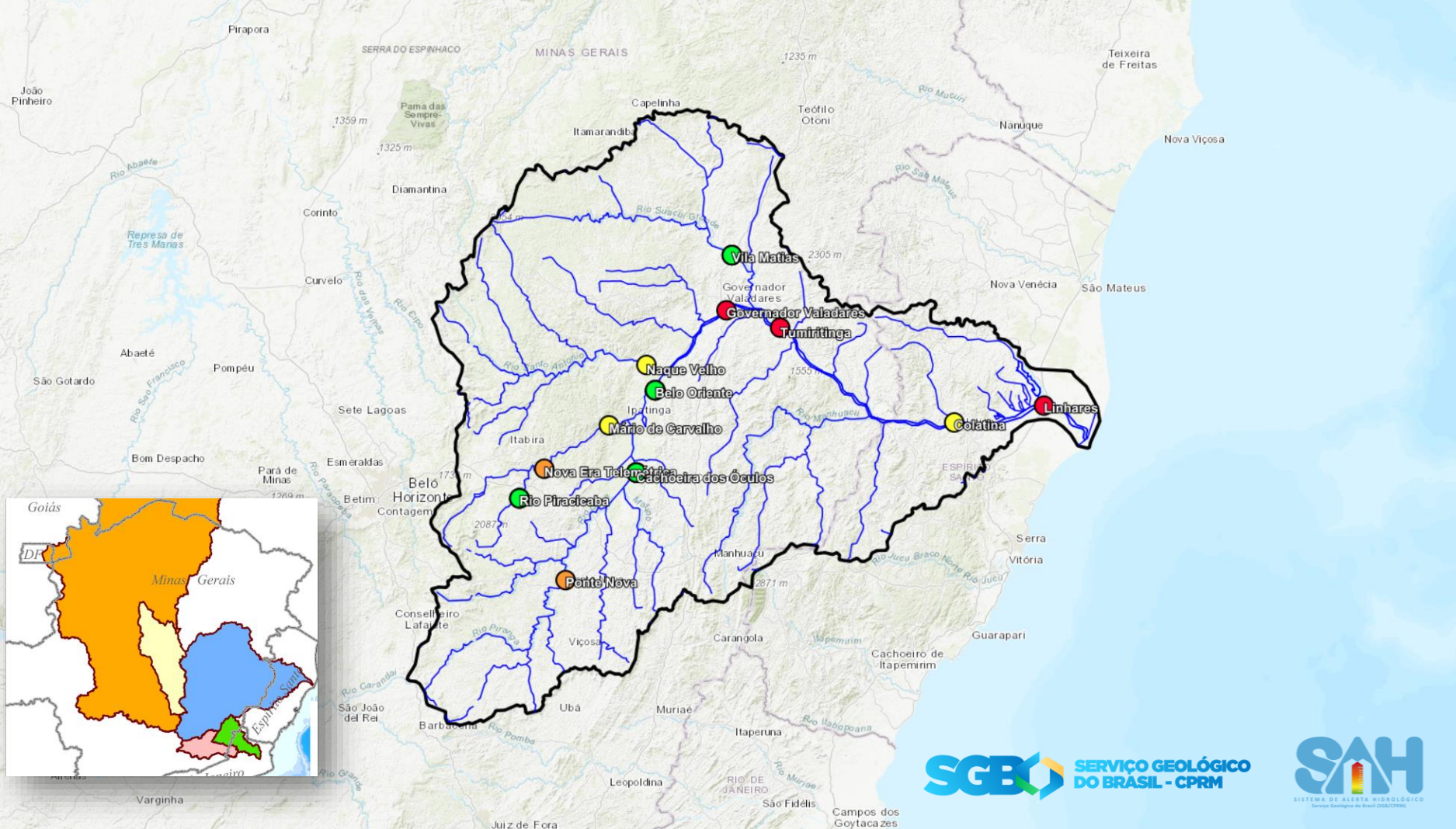
Sistema de Alerta Hidrológico da Bacia do rio Doce

Artur Matos

Coordenador do Sistema de Alerta Hidrológico

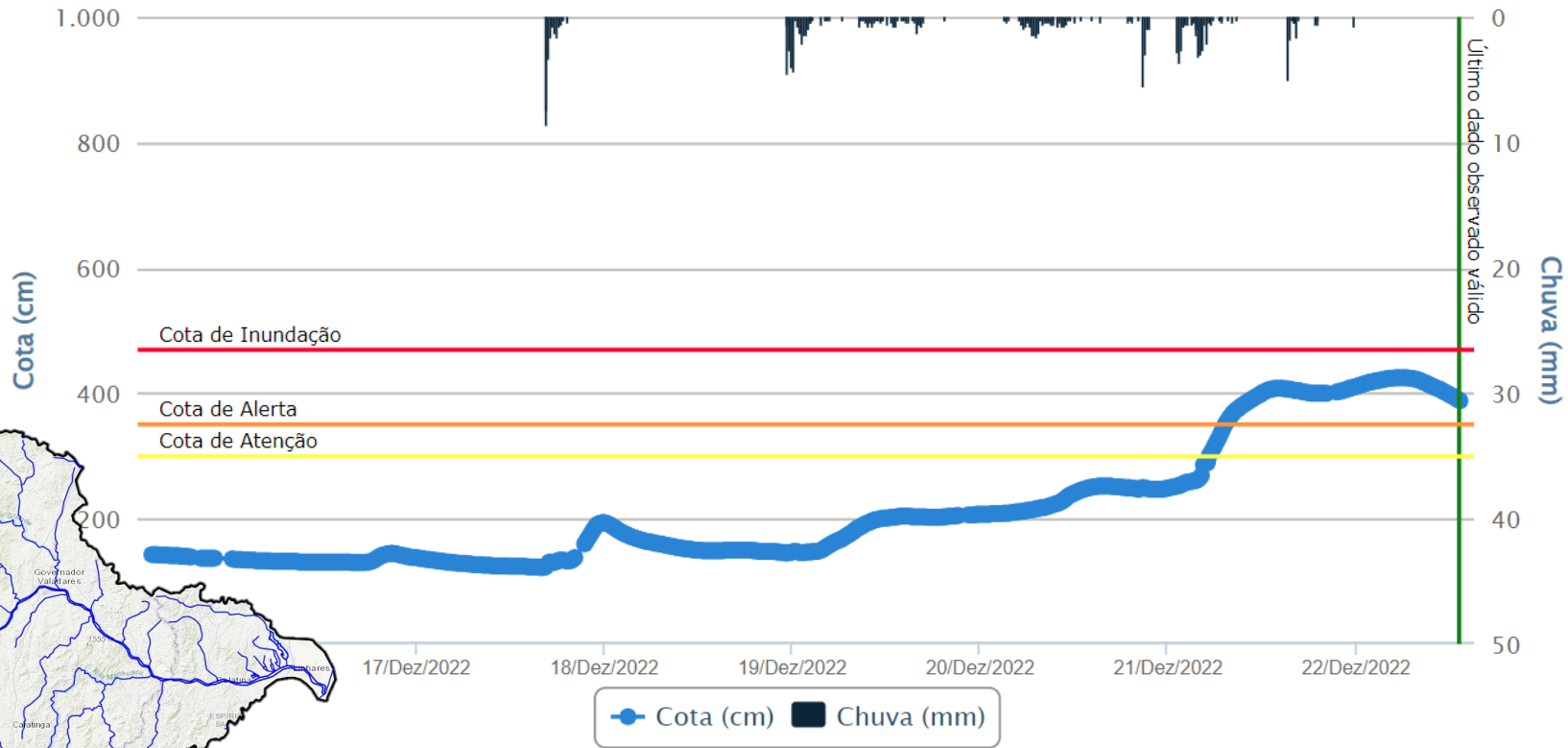
Serviço Geológico do Brasil - CPRM





Nível do rio Piracicaba – Nova Era

Período: 15/12/2022 14:14 a 22/12/2022 14:14



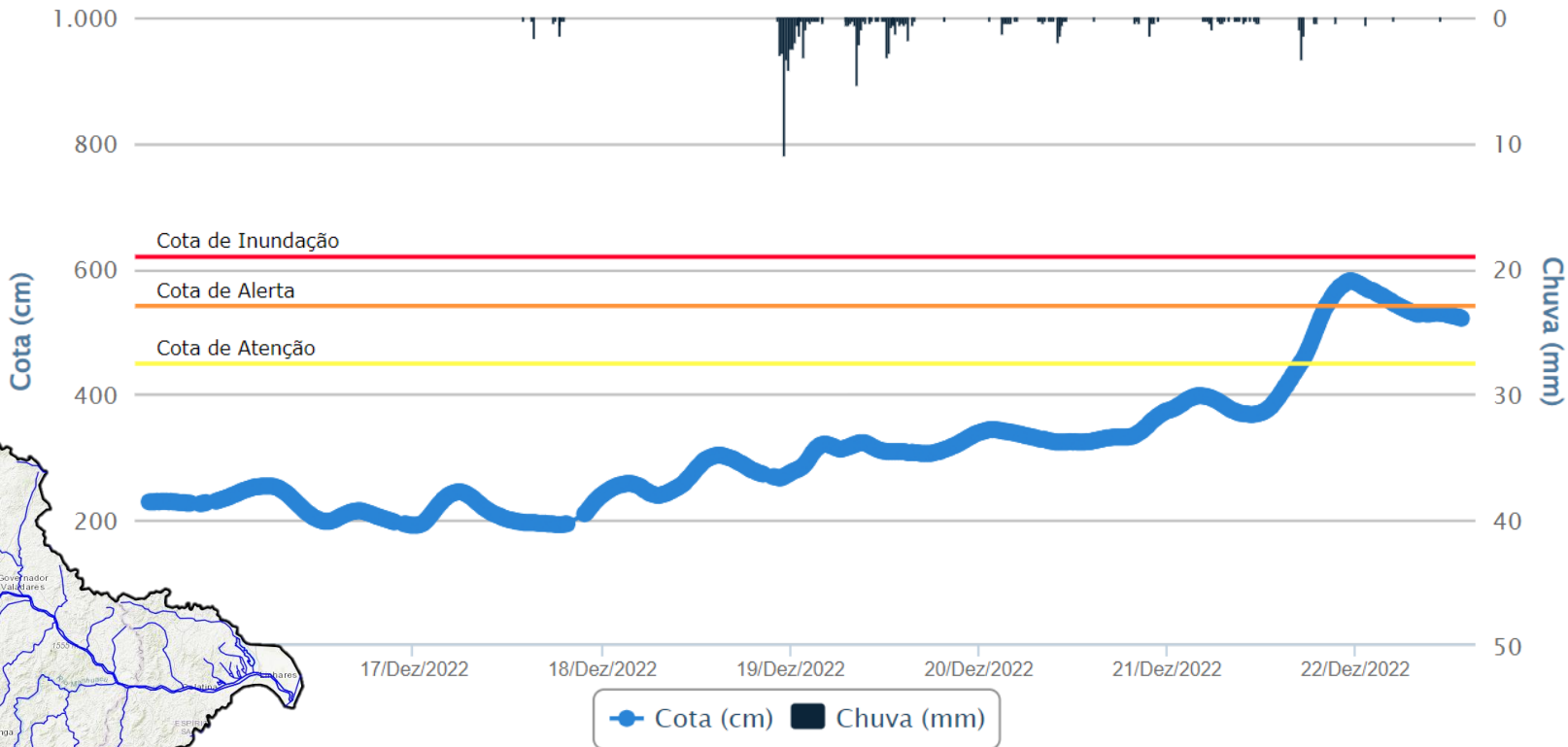
Cota de Atenção : 300.0

Cota de Alerta : 350.0

Cota de Inundação : 470.0

Nível do rio Piracicaba – Mário de Carvalho

Período: 15/12/2022 14:14 a 22/12/2022 14:14



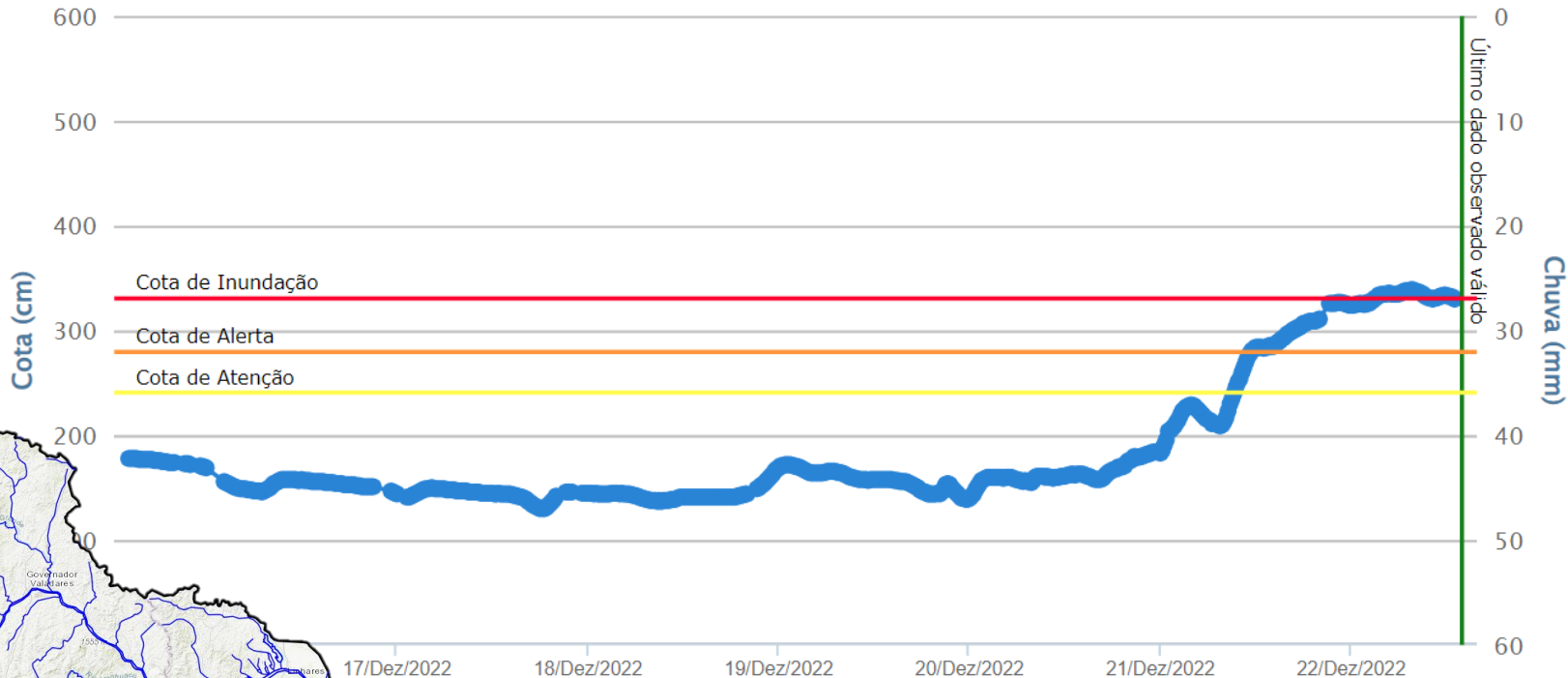
Cota de Atenção : 450.0

Cota de Alerta : 540.0

Cota de Inundação : 620.0

Nível do rio Piranga – Ponte Nova

Período: 15/12/2022 14:14 a 22/12/2022 14:14



● Cota (cm) ■ Chuva (mm)

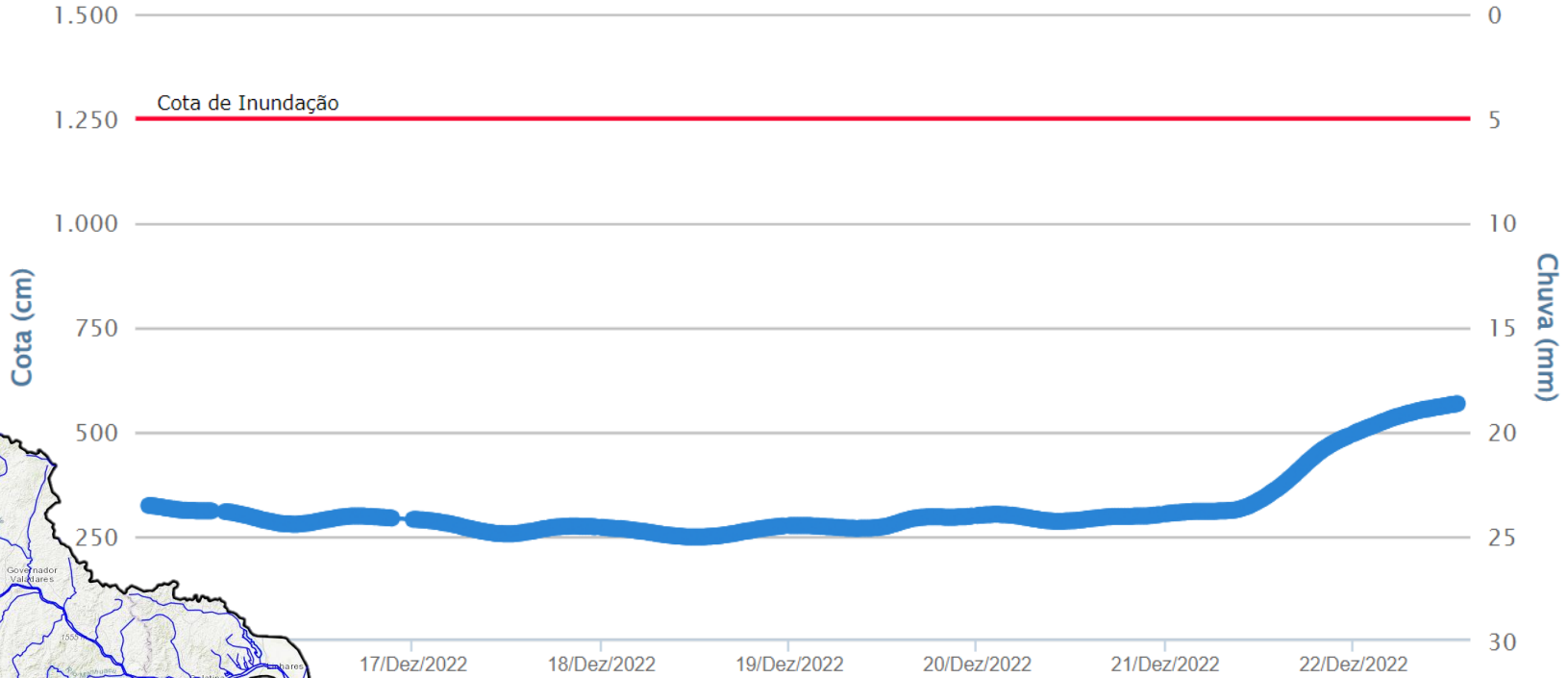
Cota de Atenção : 240.0

Cota de Alerta : 280.0

Cota de Inundação : 330.0

Nível do rio Doce – Cachoeira do Óculos

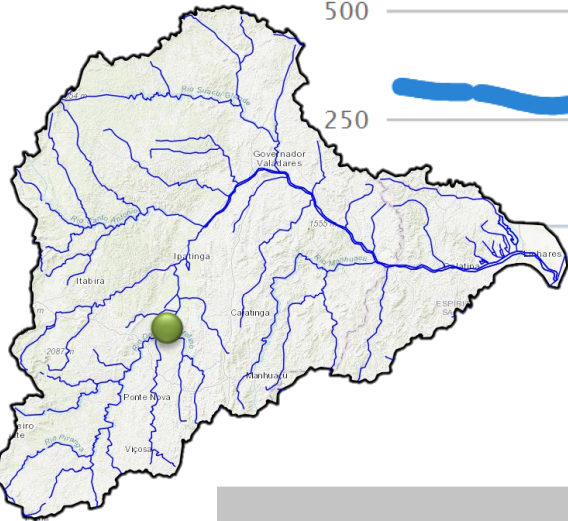
Período: 15/12/2022 14:14 a 22/12/2022 14:14



Cota (cm)

Chuva (mm)

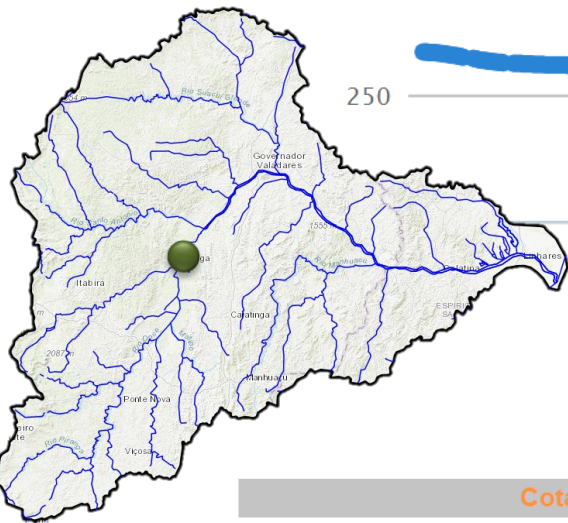
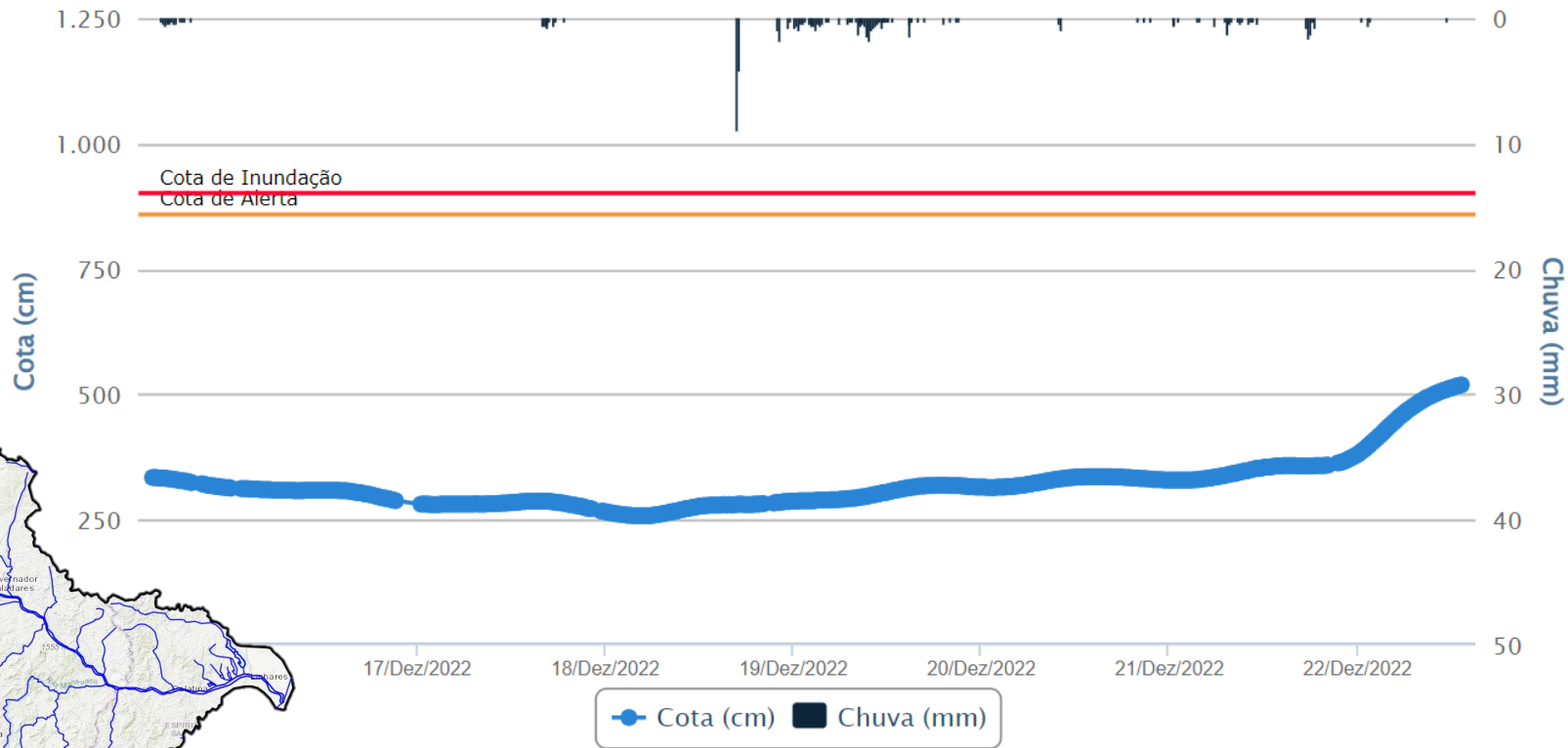
—●— Cota (cm)



Cota de Inundação : 1250.0

Nível do rio Doce – Belo Oriente

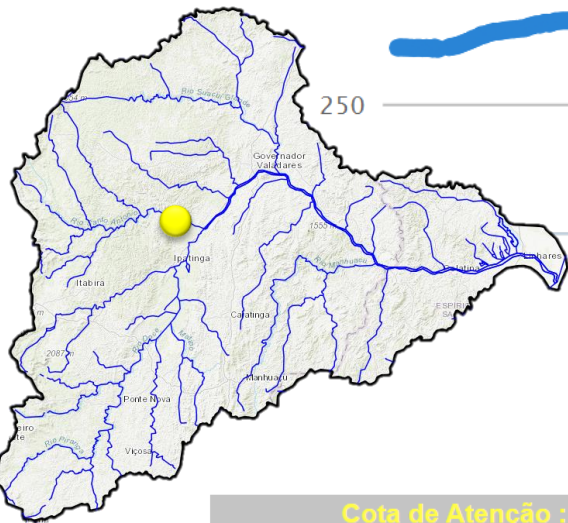
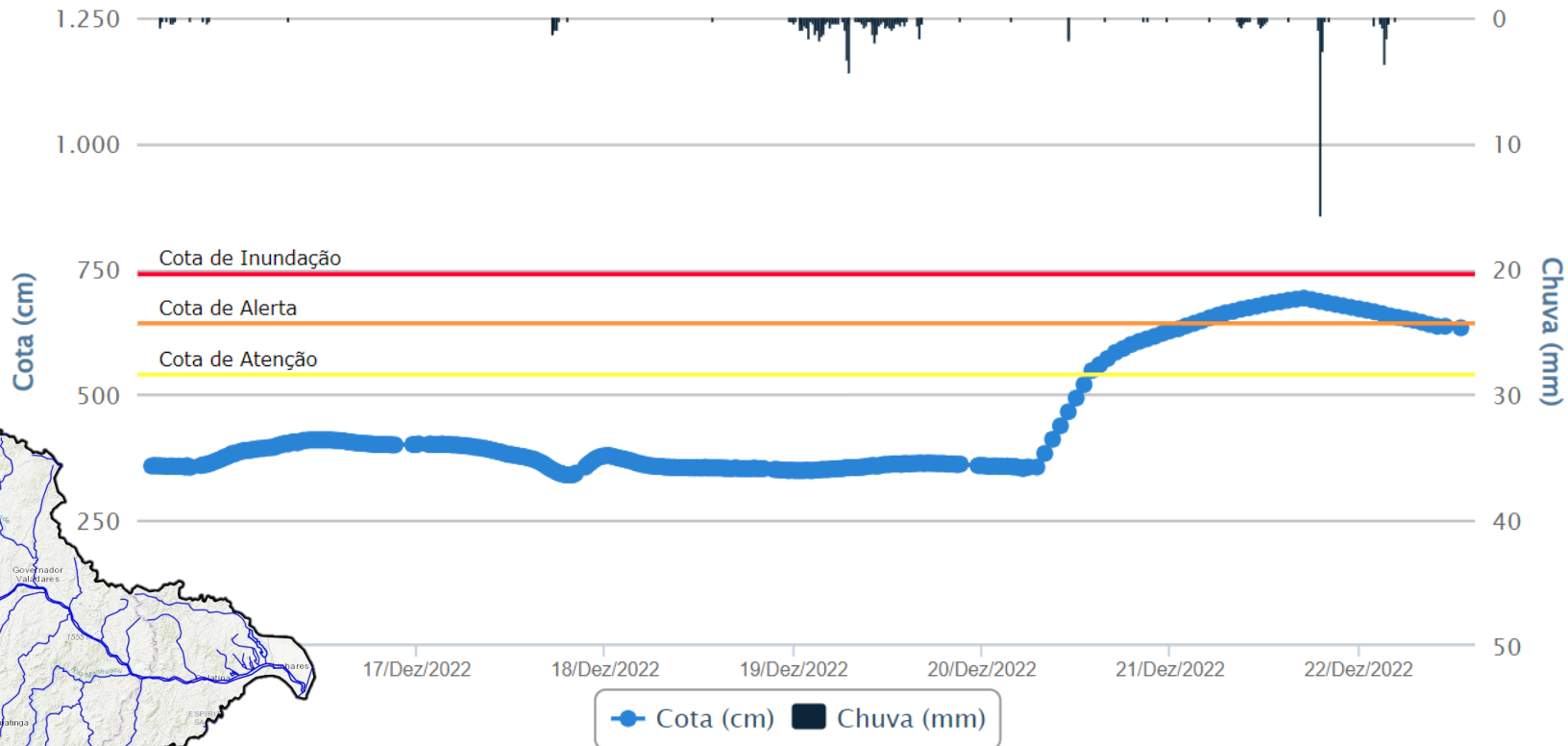
Período: 15/12/2022 14:14 a 22/12/2022 14:14



Cota de Alerta : 860.0 **Cota de Inundação : 900.0**

Nível do rio Santo Antônio – Naque Velho

Período: 15/12/2022 14:14 a 22/12/2022 14:14



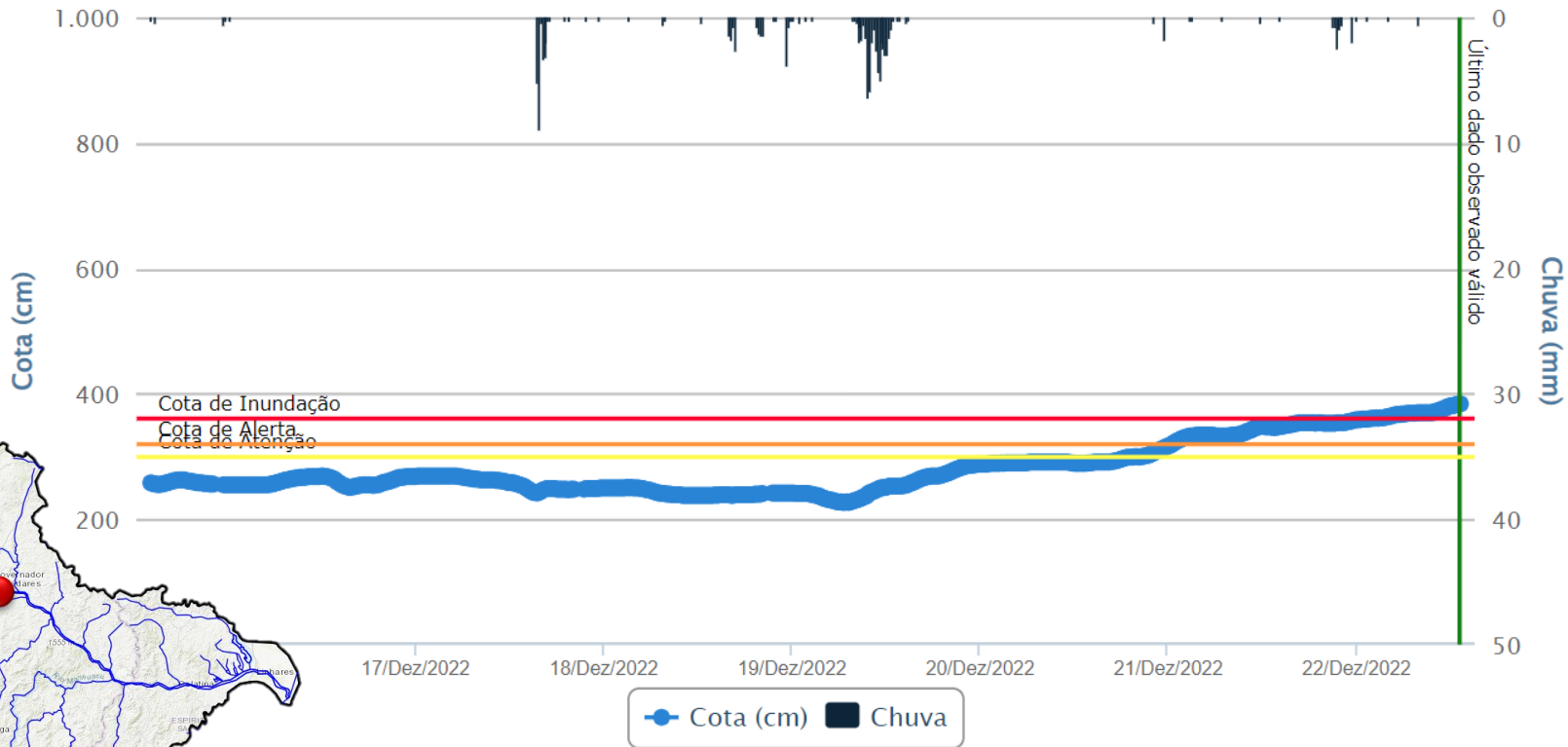
Cota de Atenção : 540.0

Cota de Alerta : 640.0

Cota de Inundação : 740.0

Nível do rio Doce – Governador Valadares

Período: 15/12/2022 14:14 a 22/12/2022 14:14



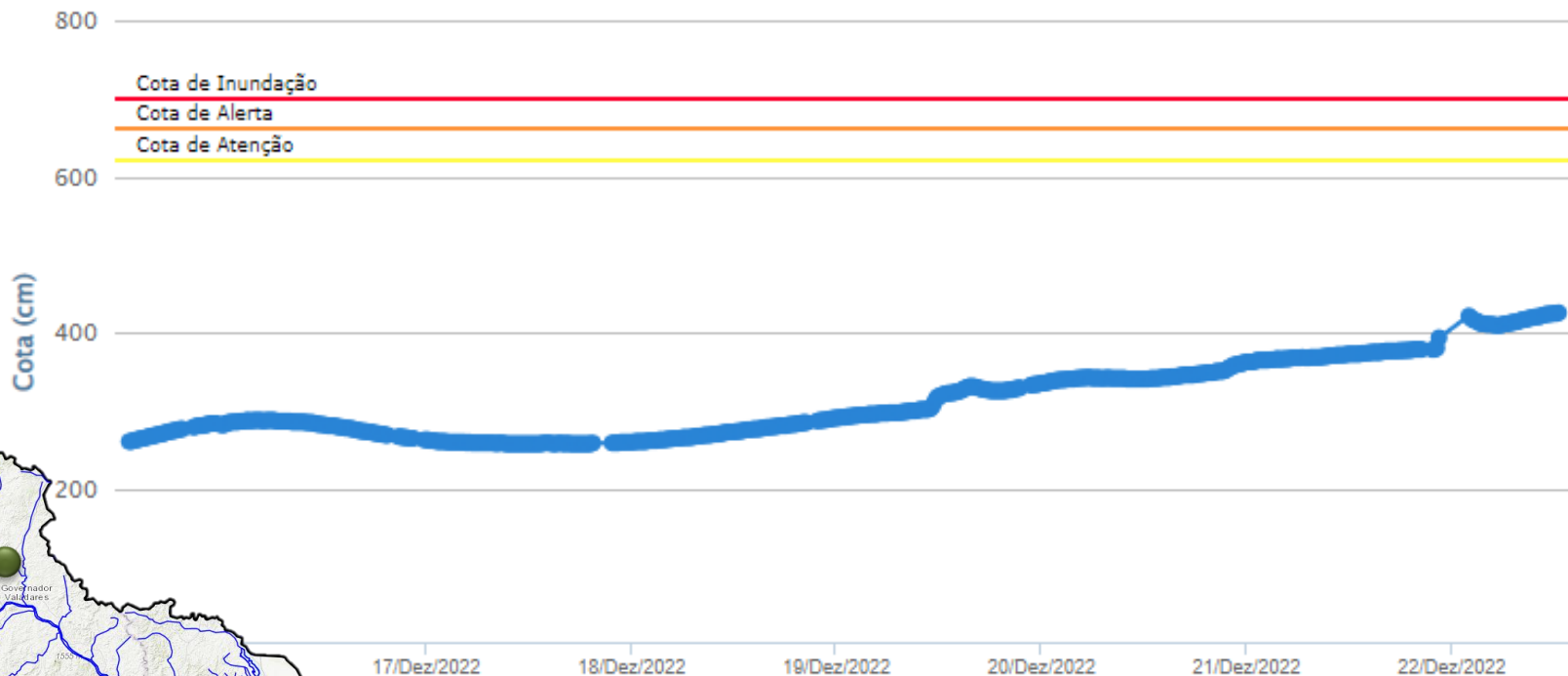
Cota de Atenção : 300.0

Cota de Alerta : 320.0

Cota de Inundação : 360.0

Nível do rio Suaçuí Grande – Vila Matias

Período: 15/12/2022 13:04 a 22/12/2022 13:04



Cota (cm)

17/Dez/2022

18/Dez/2022

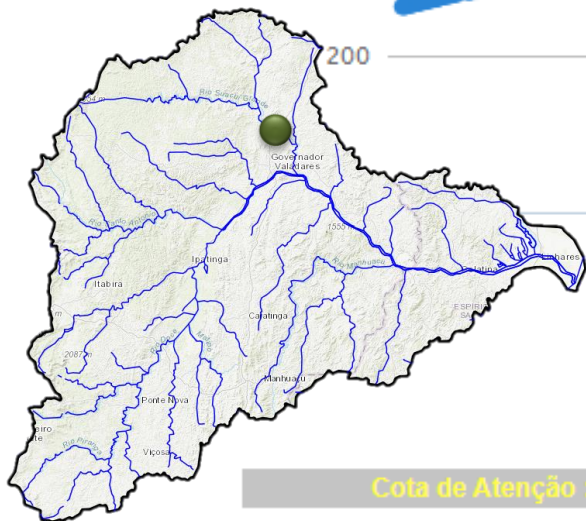
19/Dez/2022

20/Dez/2022

21/Dez/2022

22/Dez/2022

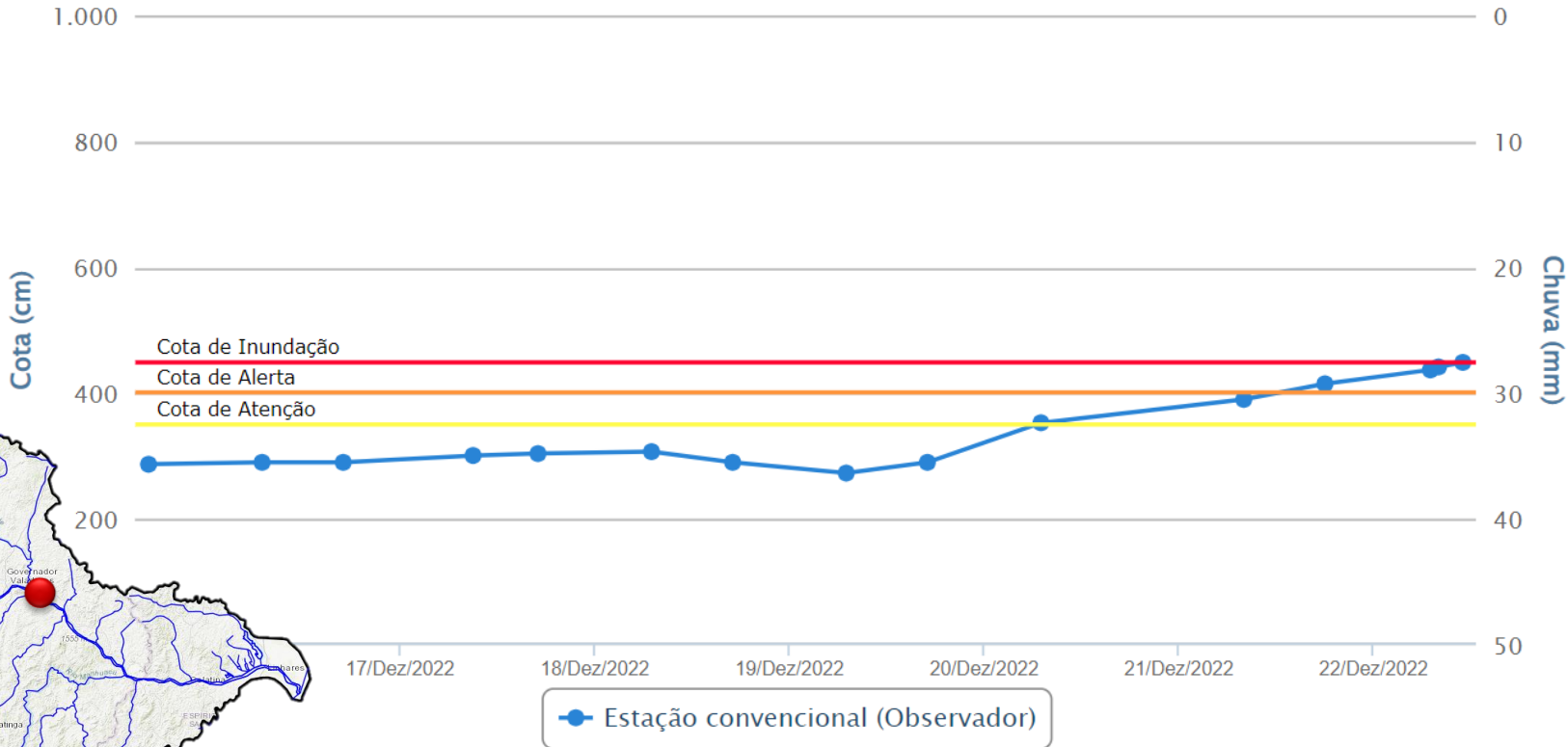
—●— Cota (cm)



Cota de Atenção : 620.0

Cota de Alerta : 660.0

Cota de Inundação : 700.0



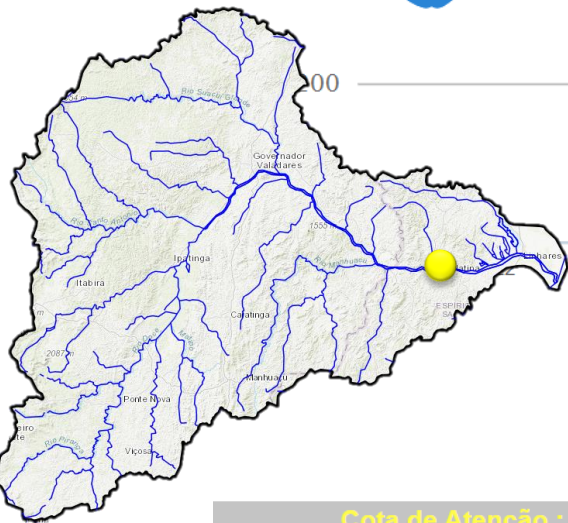
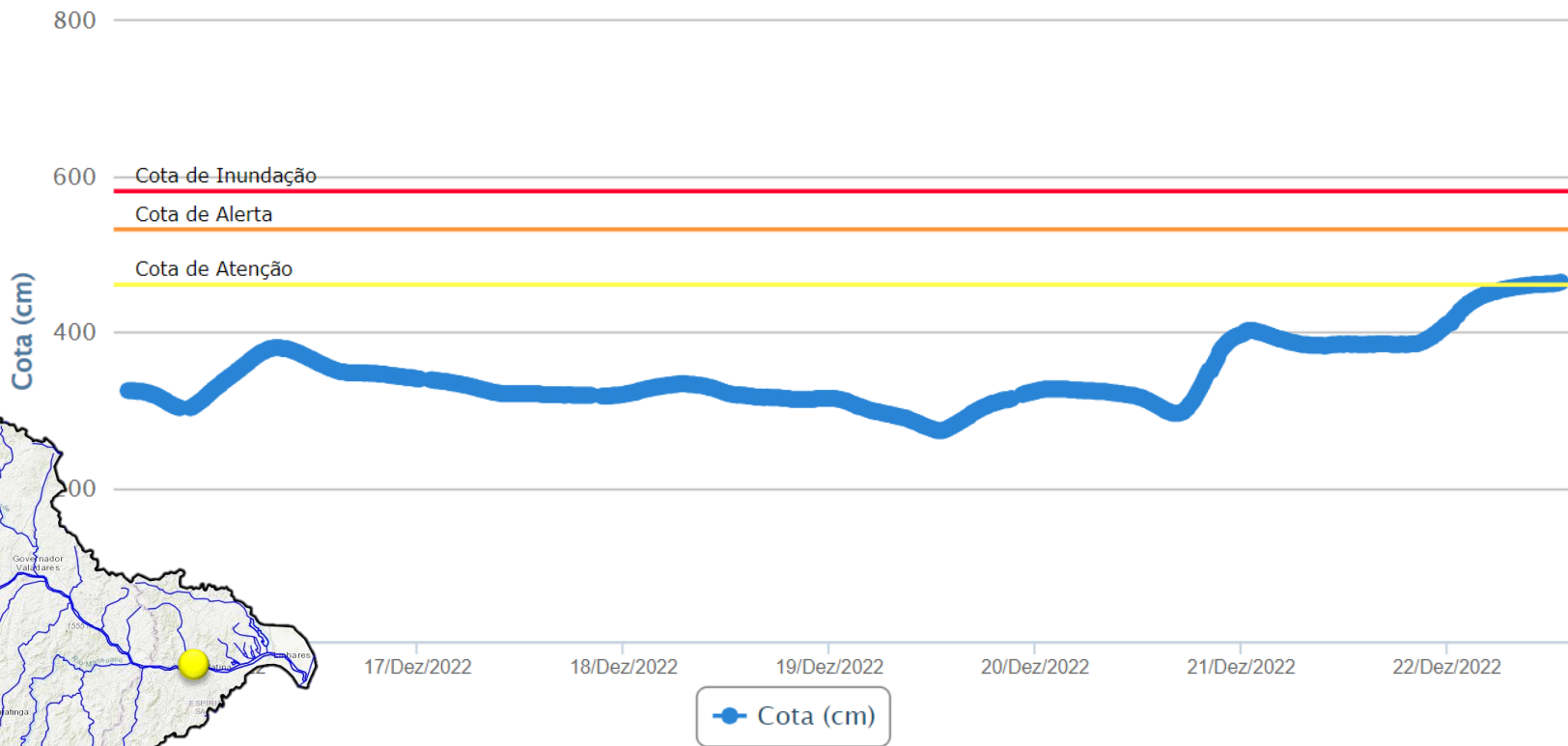
Cota de Atenção : 350.0

Cota de Alerta : 400.0

Cota de Inundação : 450.0

Nível do rio Doce – Colatina

Período: 15/12/2022 14:14 a 22/12/2022 14:14



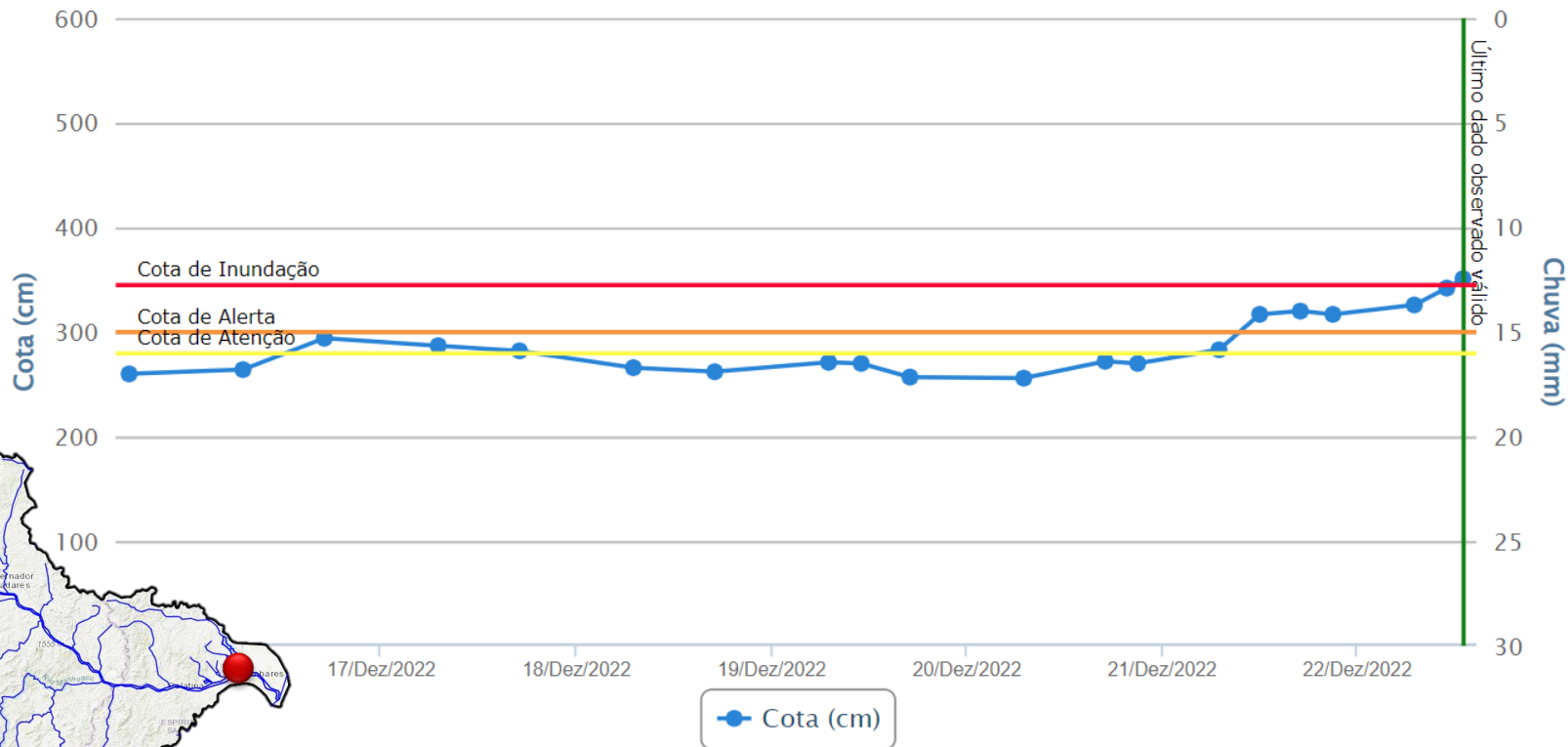
Cota de Atenção : 460.0

Cota de Alerta : 530.0

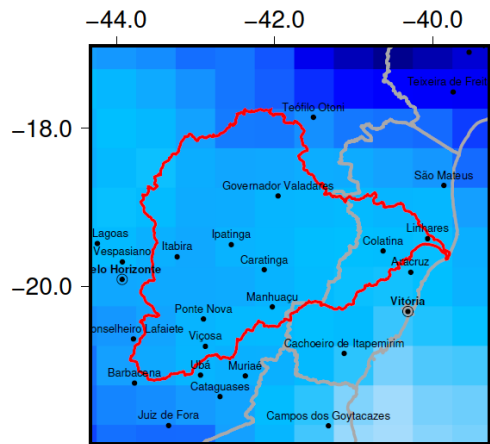
Cota de Inundação : 580.0

Nível do rio Doce - Linhares

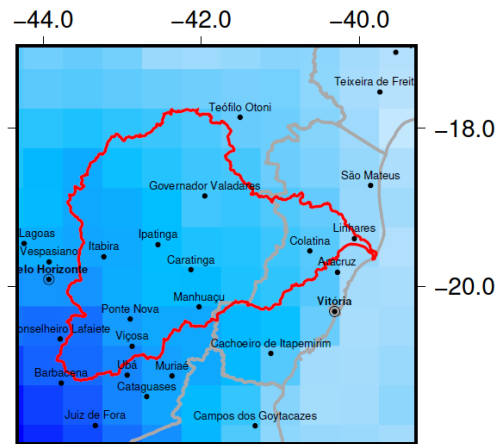
Período: 15/12/2022 14:45 a 22/12/2022 14:45



Chuva Prevista Acumulada de 52.6 mm para 7 dias

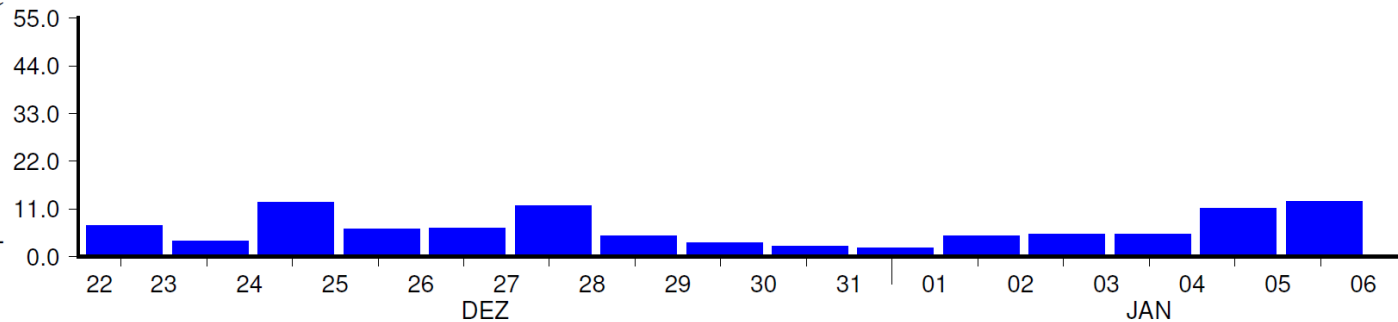


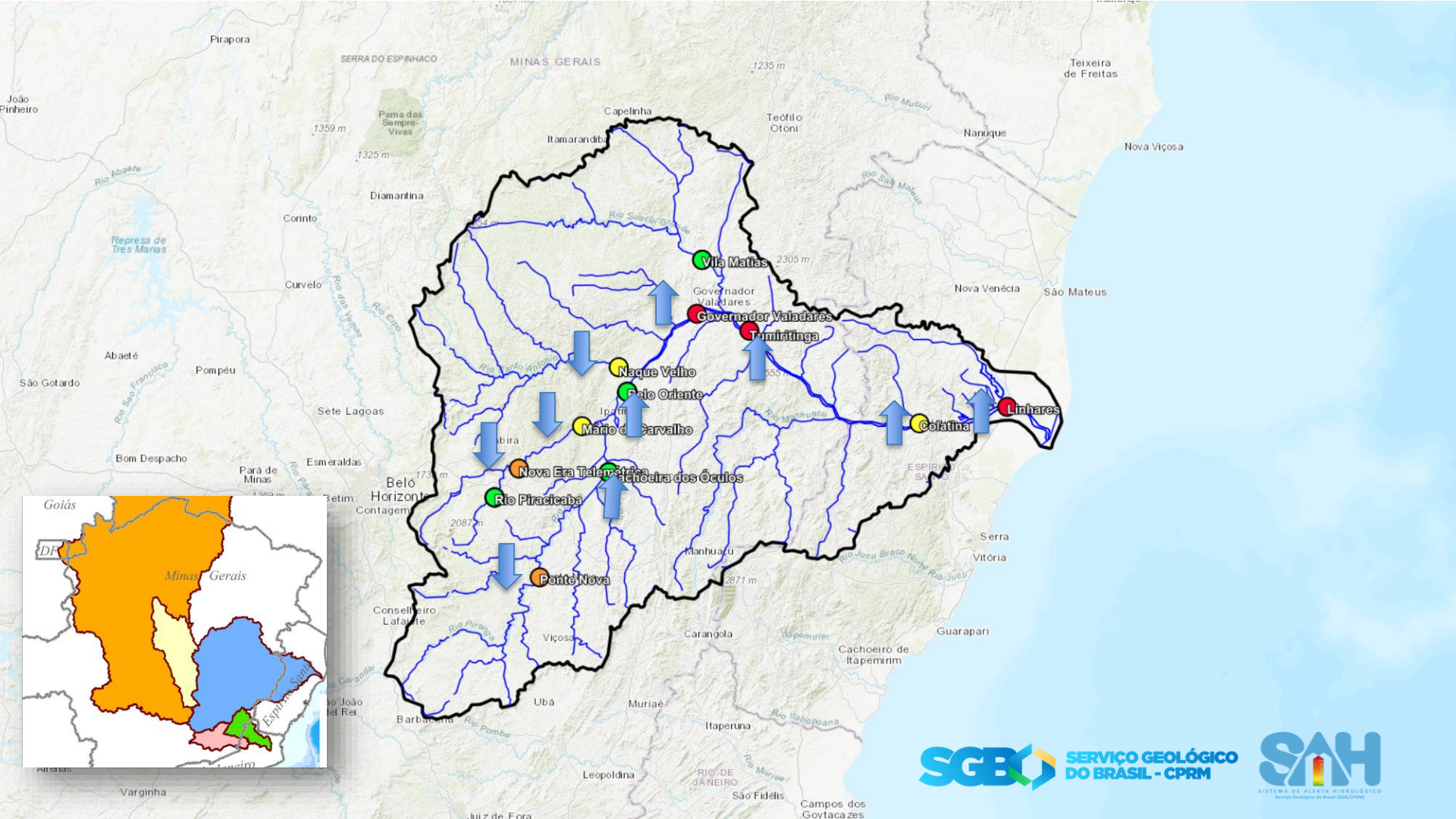
Chuva Prevista Acumulada de 46.2 mm para 7-15 dias



Chuva prevista média na AD (mm)

Chuva prevista GEFS (NCEP-NOAA) para os próximos 15 dias para area de drenagem (AD) ALERTA_CPRM_DOCE-sem_código







Artur Matos

Pesquisador em Geociências

Coordenador do Sistema de Alerta Hidrológico

Serviço Geológico do Brasil – CPRM

www.cprm.gov.br

alerta.doce@sgb.gov.br