

Monitoramento e Previsões de chuva para a Bacia do Rio Doce

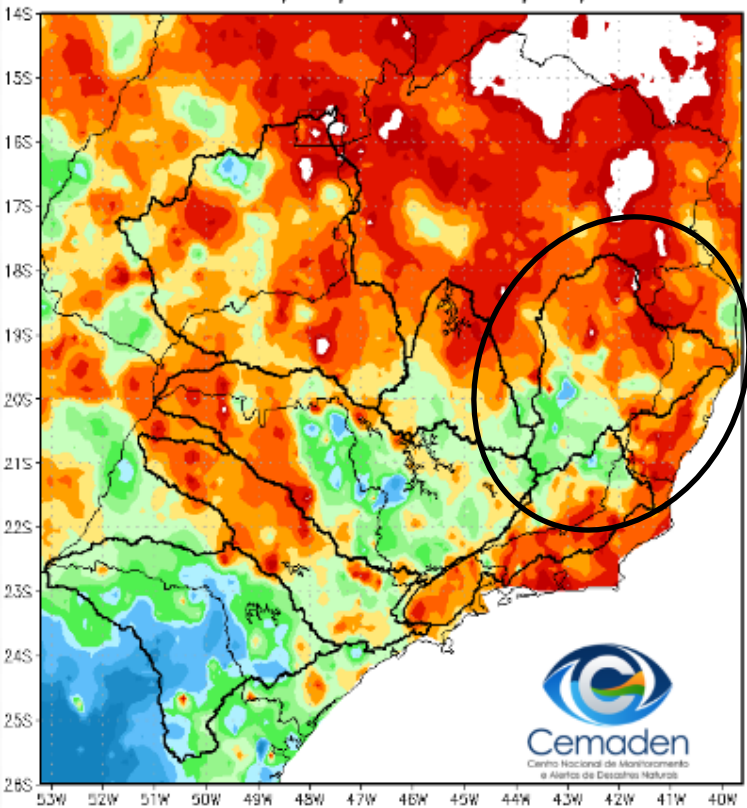


Cemaden
Centro Nacional de Monitoramento
e Alertas de Desastres Naturais

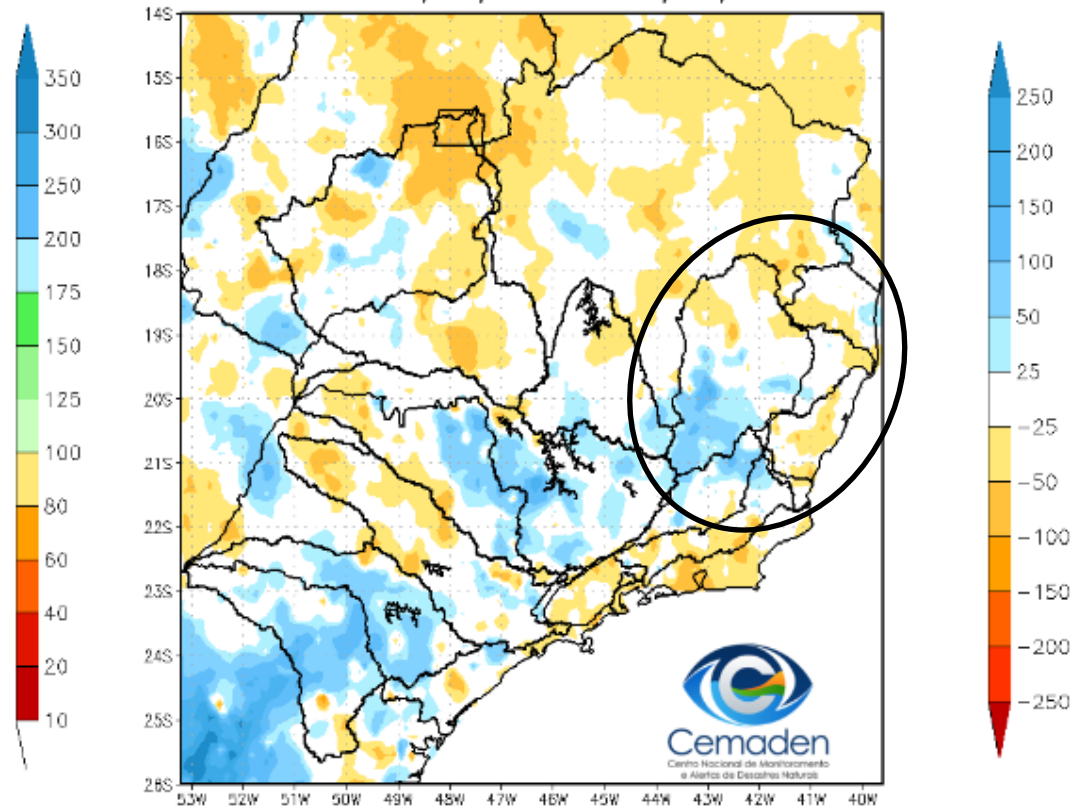
01 de Novembro de 2022

Precipitação acumulada nos últimos 30 dias

Precipitação Acumulada (mm) A.S.
Período: 01/10/2022 a 31/10/2022

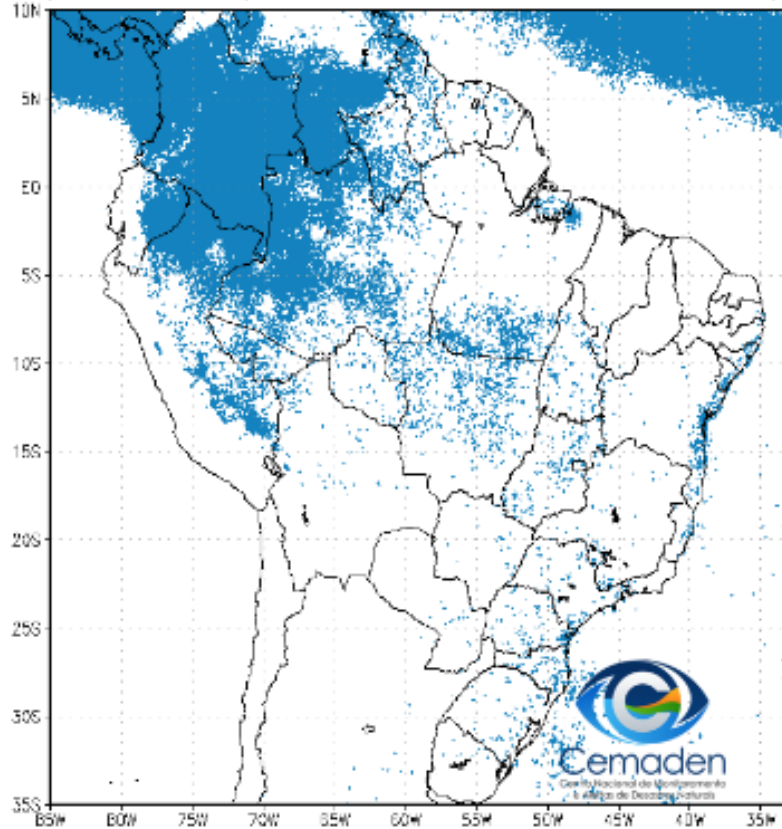


Anomalia de Precipitação (mm) A.S.
Período: 01/10/2022 a 31/10/2022

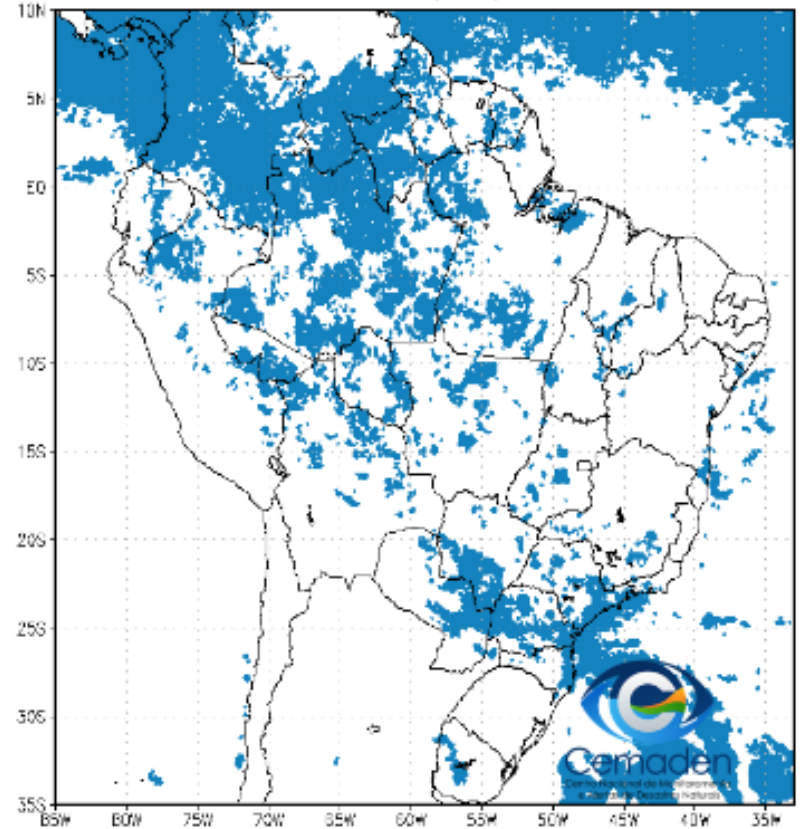


Situação da Estação Chuvosa

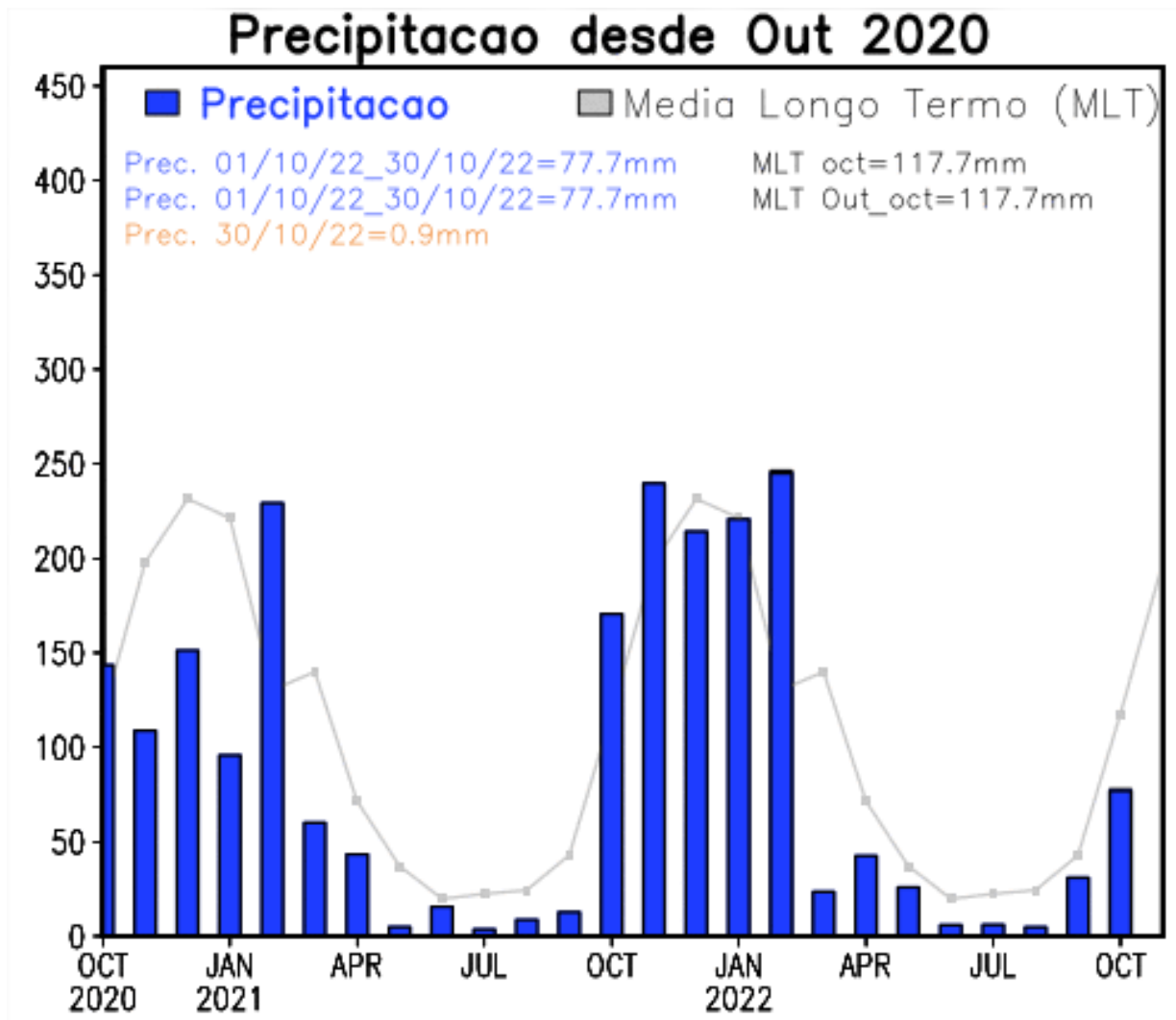
Climatologia da Precipitação (2001–2020)
Superior 3 mm/dia em 4 de 5 dias Período: 31/10



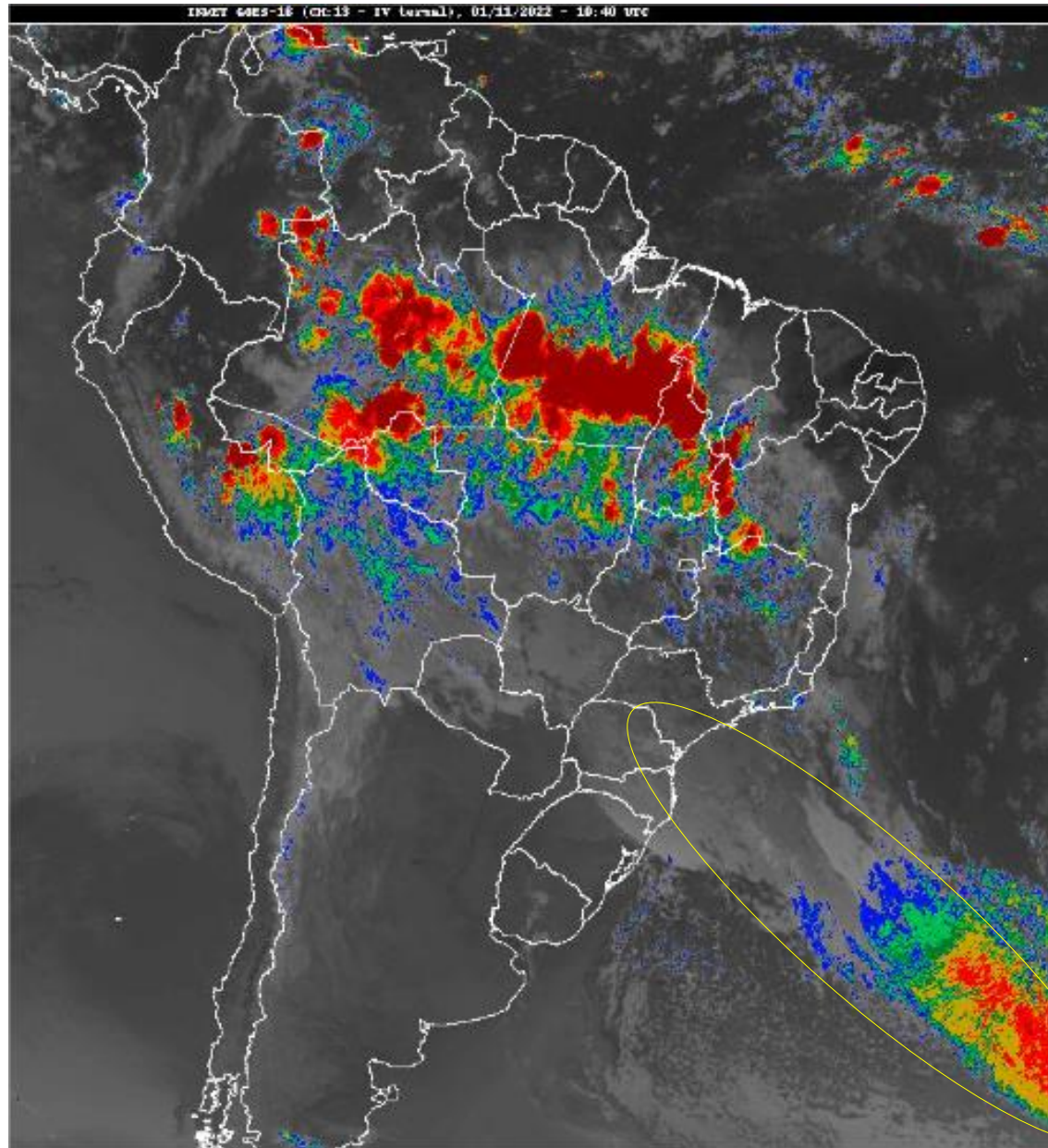
Precipitação A.S. Superior a 3 mm/dia por 4 de 5 di
Período: 31/10/2022



Evolução temporal da precipitação

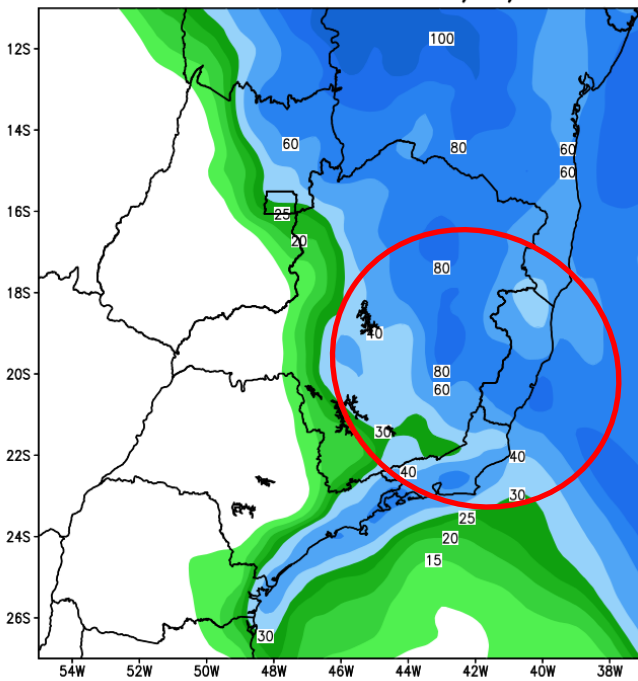


Situação meteorológica atual

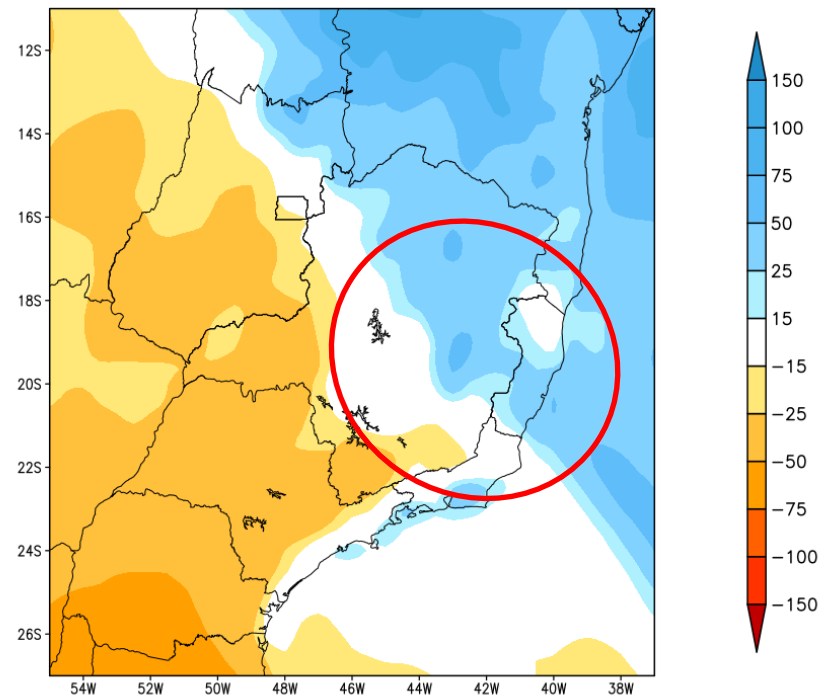


Previsão de chuva para os próximos 7 dias

GEFS / BRASIL_SE
Precipitacao acumulada 1aSem (mm)
Previsao das 00Z dia 01/11/2022



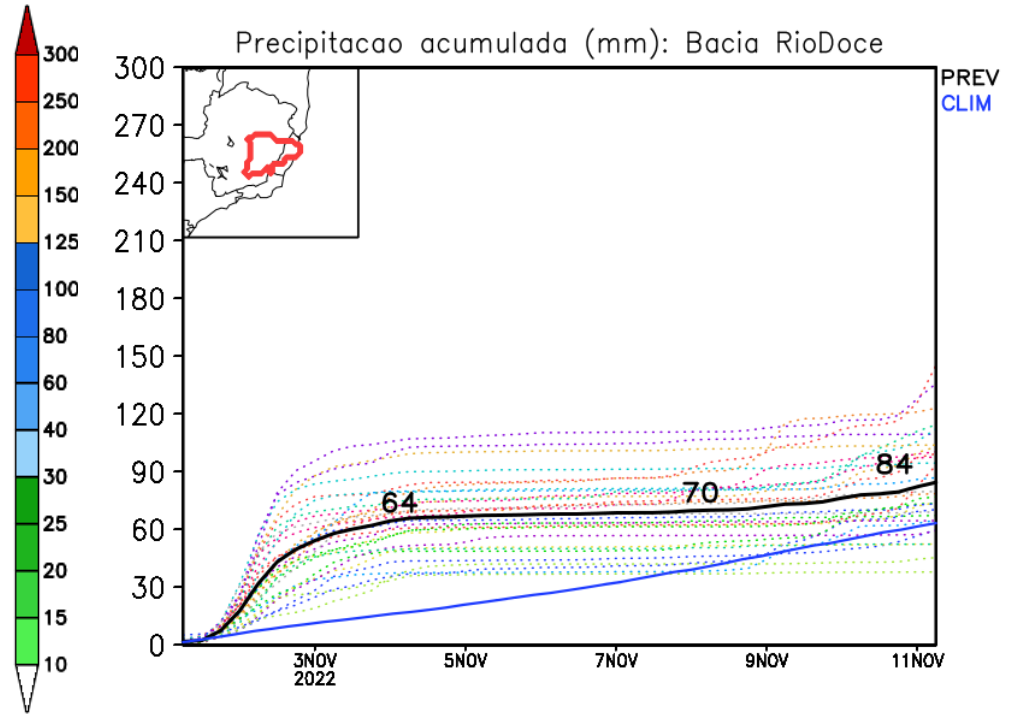
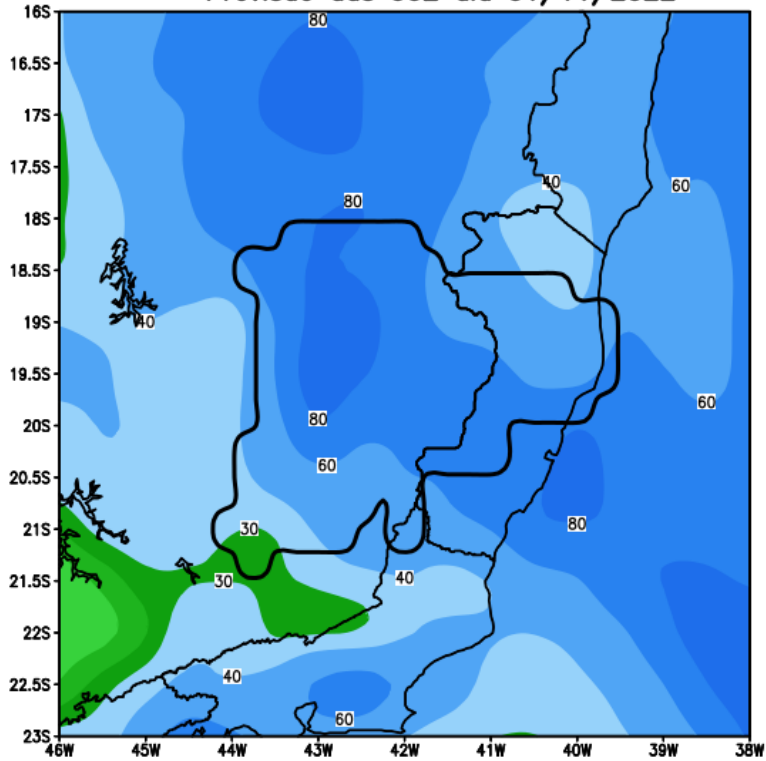
Anomalia de Precipitacao BR SE (mm)
Periodo: 2022110100 a 2022110800



Fonte: GFS/NOAA

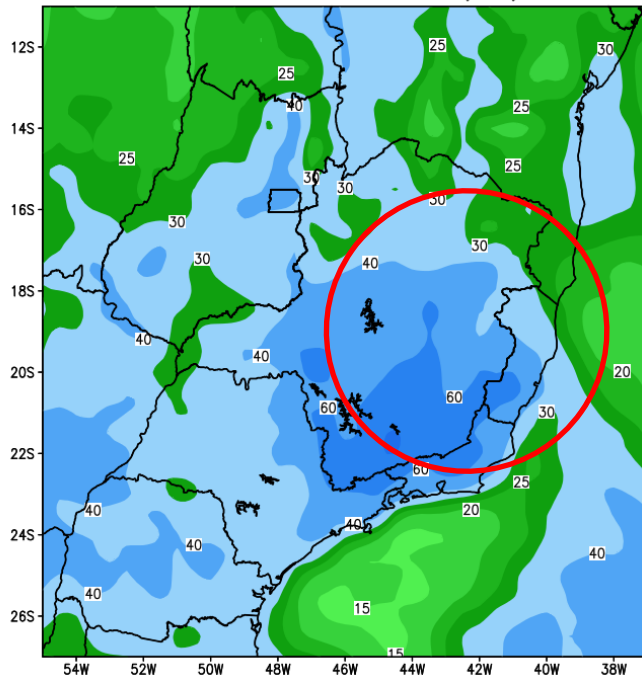
Bacia do rio Doce

GEFS / Bacia do Rio Doce
Precipitacao acumulada em 7 dias (mm)
Previsao das 00Z dia 01/11/2022

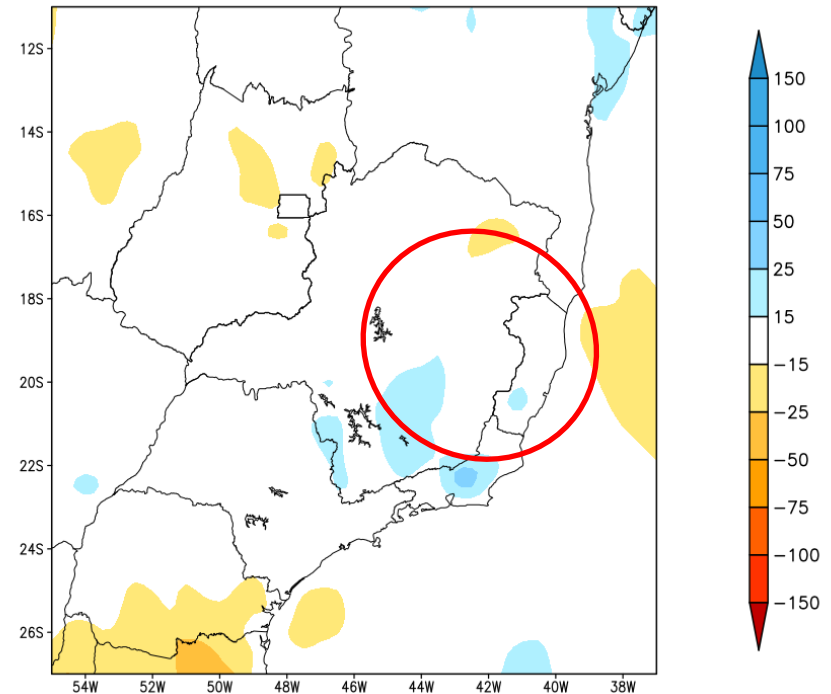


Tendência para a 2ª Semana

GEFS / BRASIL_SE
Precipitacao acumulada 2aSem (mm)
Previsao das 00Z dia 01/11/2022

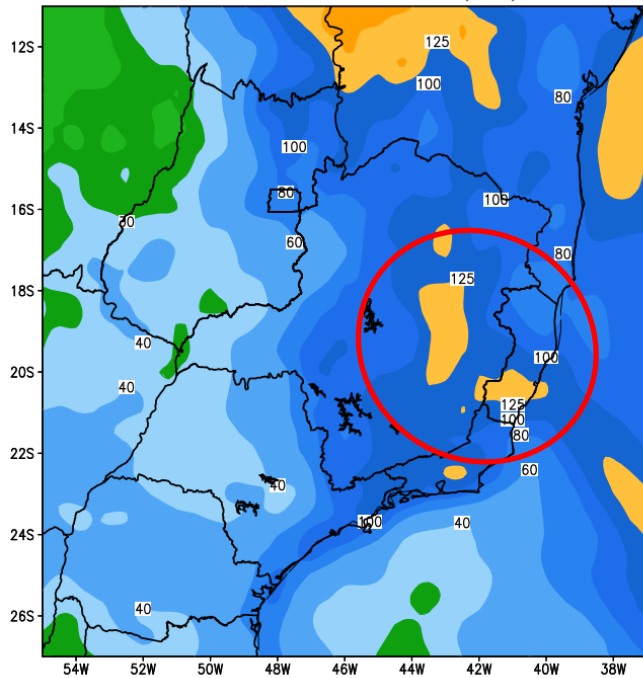


Anomalia de Precipitacao BR_SE (mm)
Periodo: 2022110900 a 2022111500

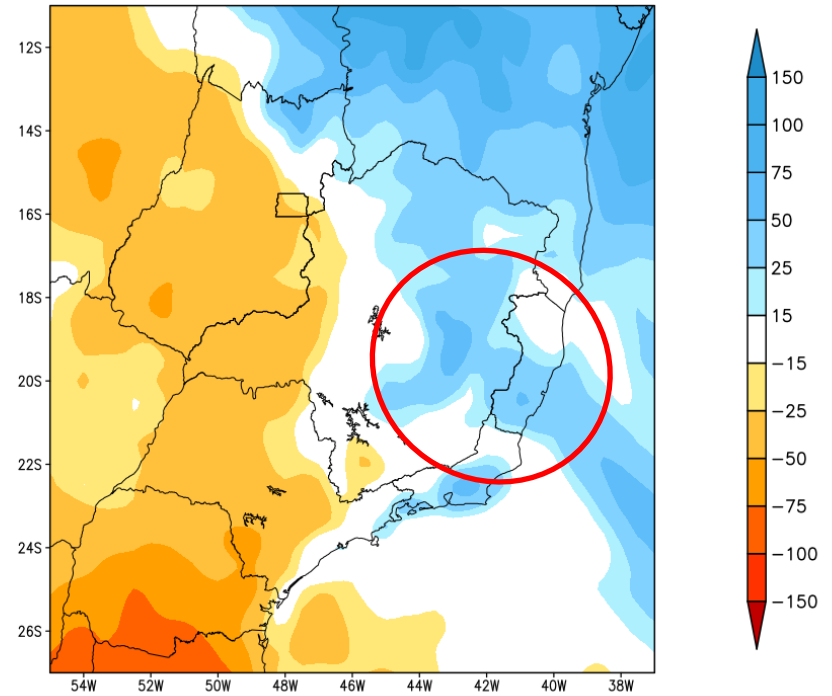


Tendência para as duas próximas semanas

GEFS / BRASIL_SE
Precipitacao acumulada 14dias (mm)
Previsao das 00Z dia 01/11/2022



Anomalia de Precipitacao BR SE (mm)
Periodo: 2022110100 a 2022111500

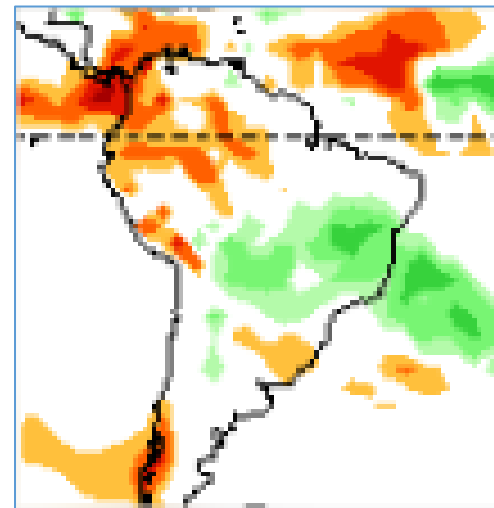
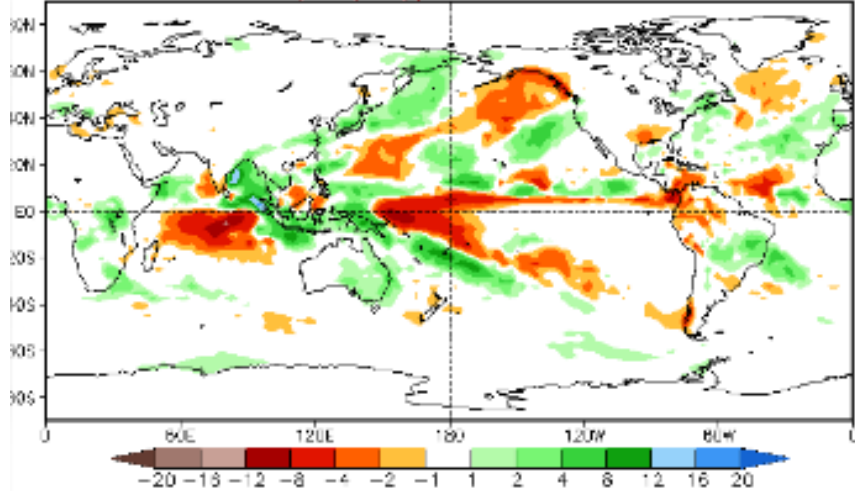


Tendência 3a e 4a semanas

16 Member Ensemble Mean Forecast from 30Oct2022

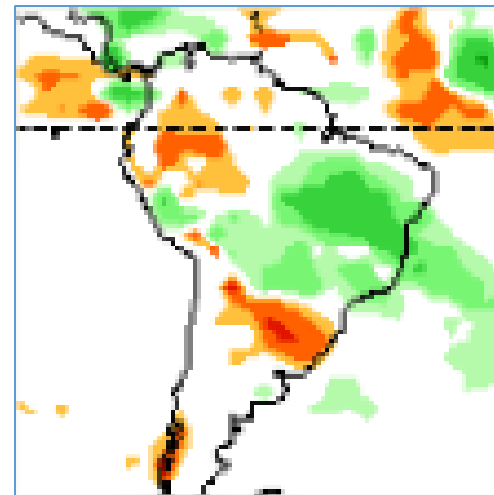
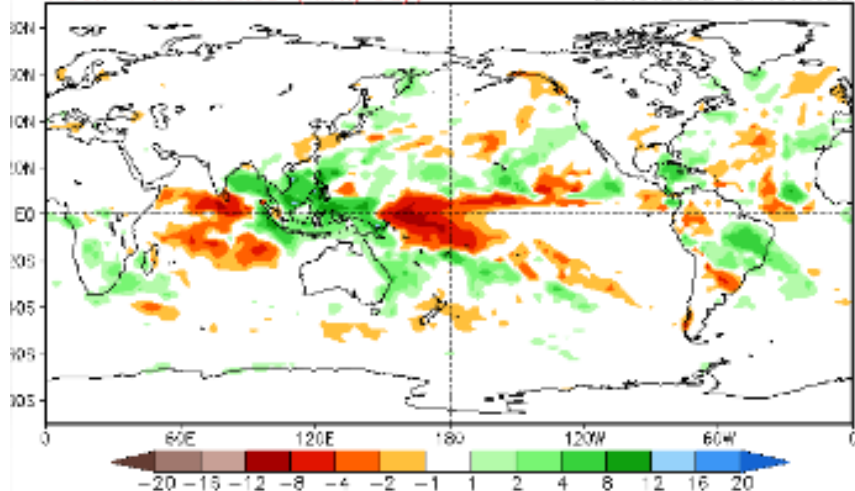
Week 3 Anomalies (mm/day)

14Nov2022–20Nov2022



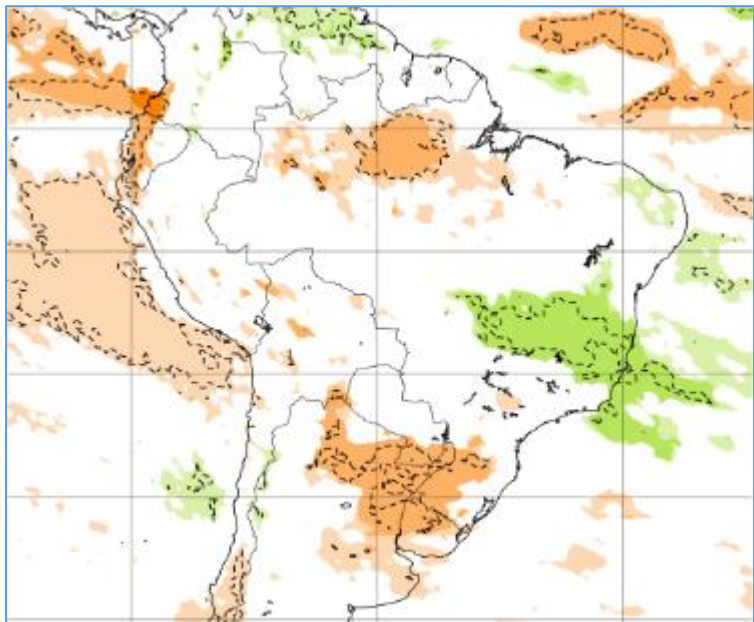
Week 4 Anomalies (mm/day)

21Nov2022–27Nov2022

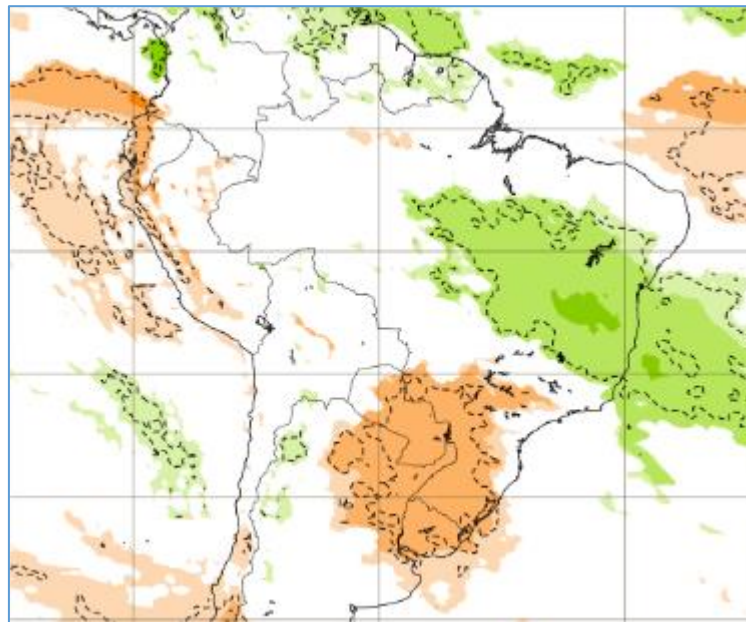


Tendência para 3ª e 4ª semanas

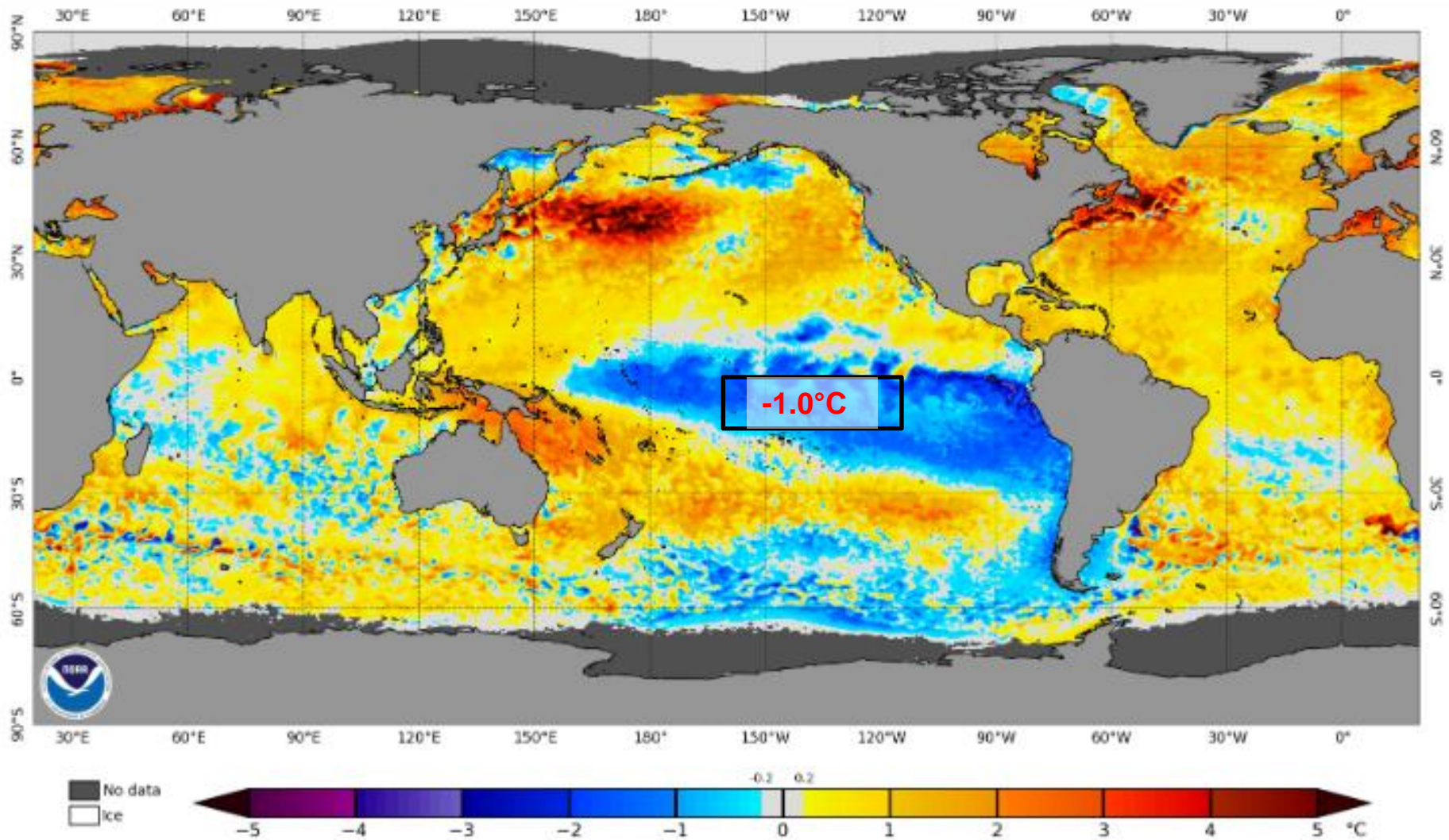
14-21/11



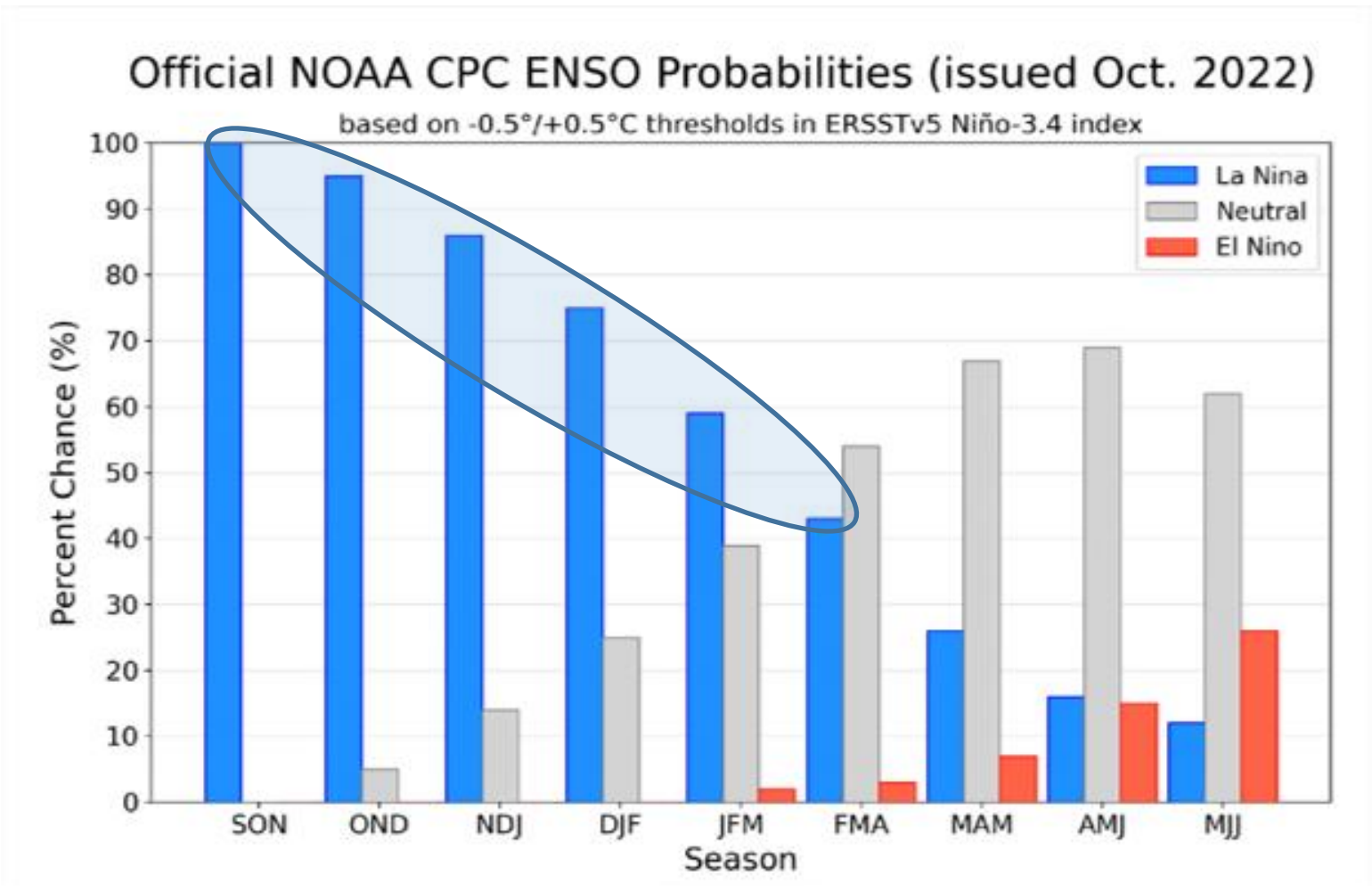
21-28/11



Status Atual: La Niña



Previsão do “La Niña”



Status Atual: **La Niña**

FONTE: NOAA

Previsão sazonal de Chuva NDJ

