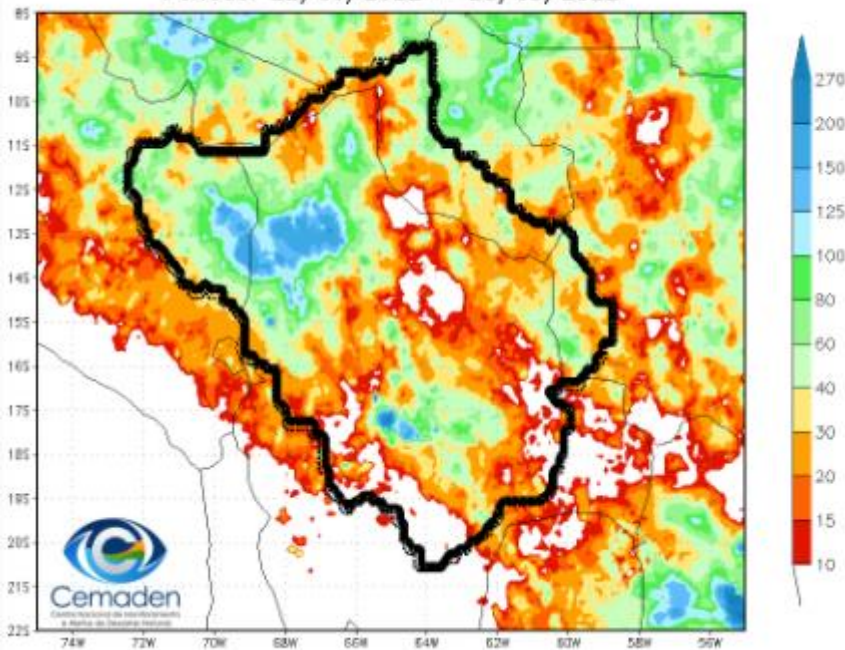


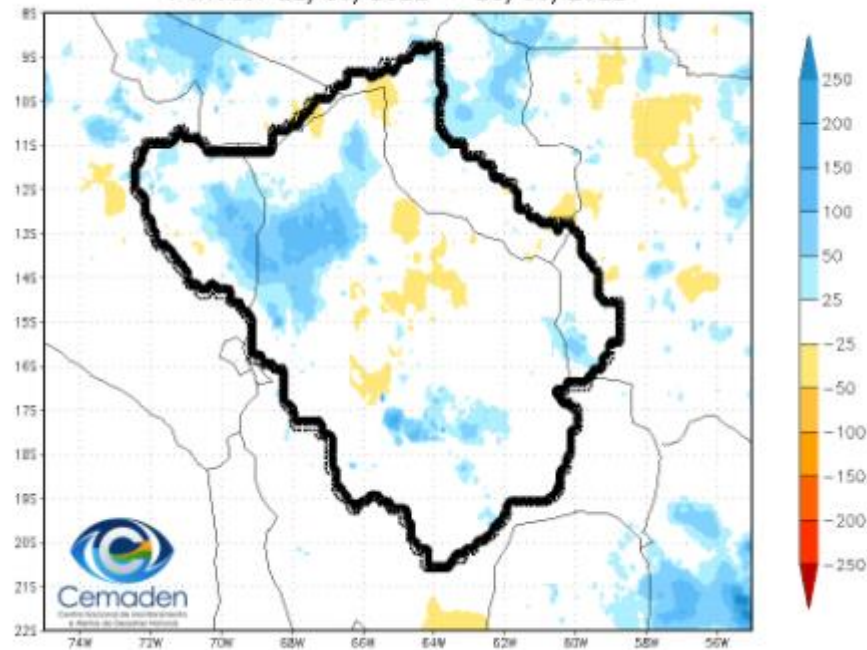
Diagnóstico e Previsões Meteorológicas e Hidrológicas para a Bacia do Rio Madeira

Precipitação Acumulada nos últimos 7 dias

Precipitação Acumulada 7 dias(mm)
Período: 22/03/2022 - 28/03/2022

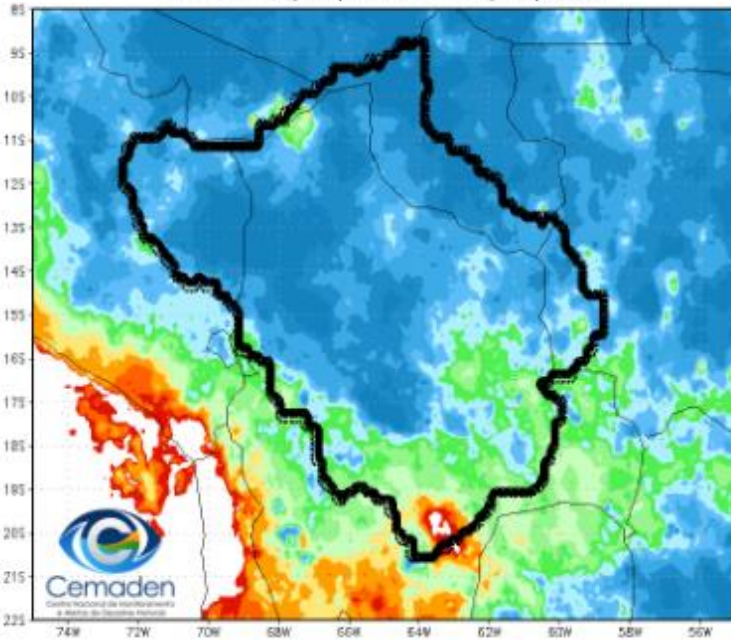


Anomalia de Precipitação Média 7 dias(mm)
Período: 22/03/2022 - 28/03/2022

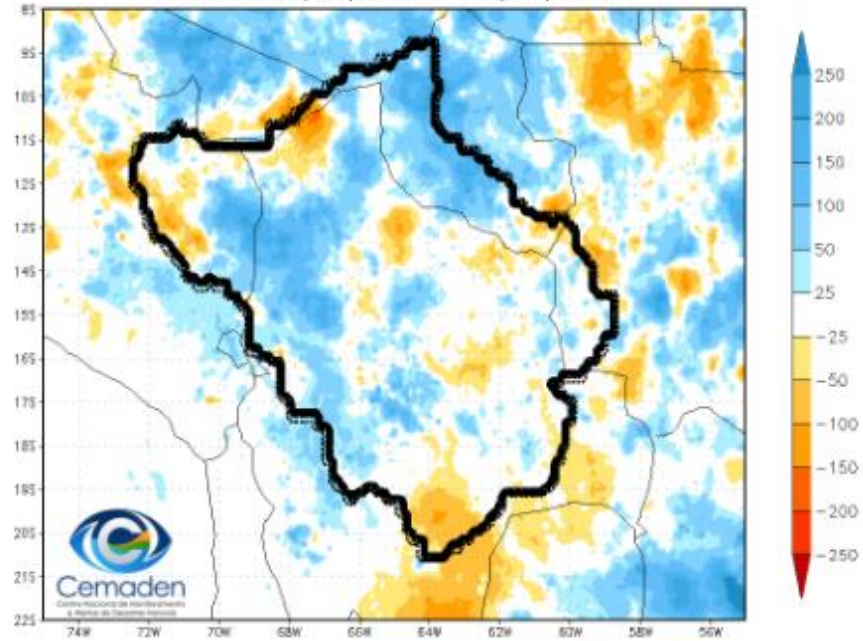


Precipitação Acumulada no mês de Março

Precipitação Acumulada (mm)
Período: 01/03/2022 - 28/03/2022

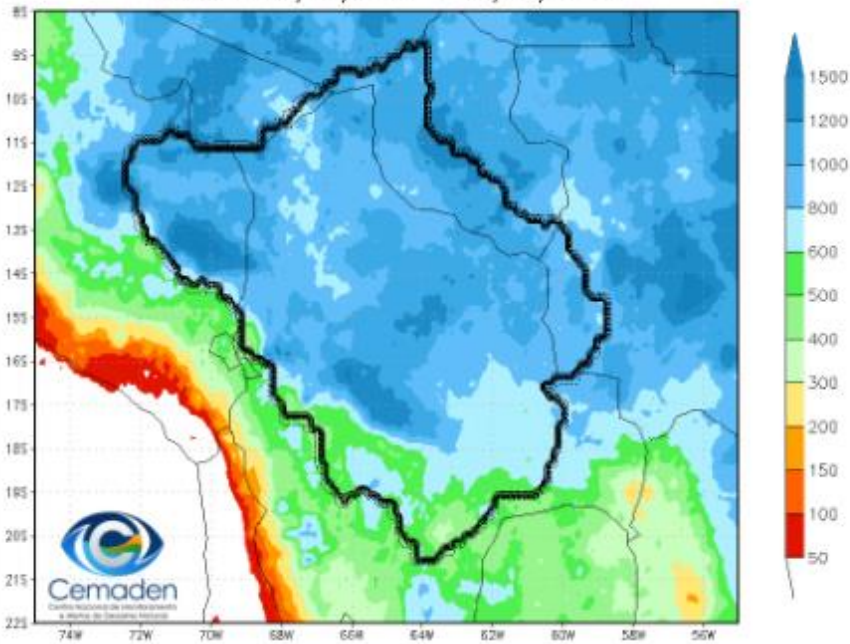


Anomalia de Precipitação Média (mm)
Período: 01/03/2022 - 28/03/2022

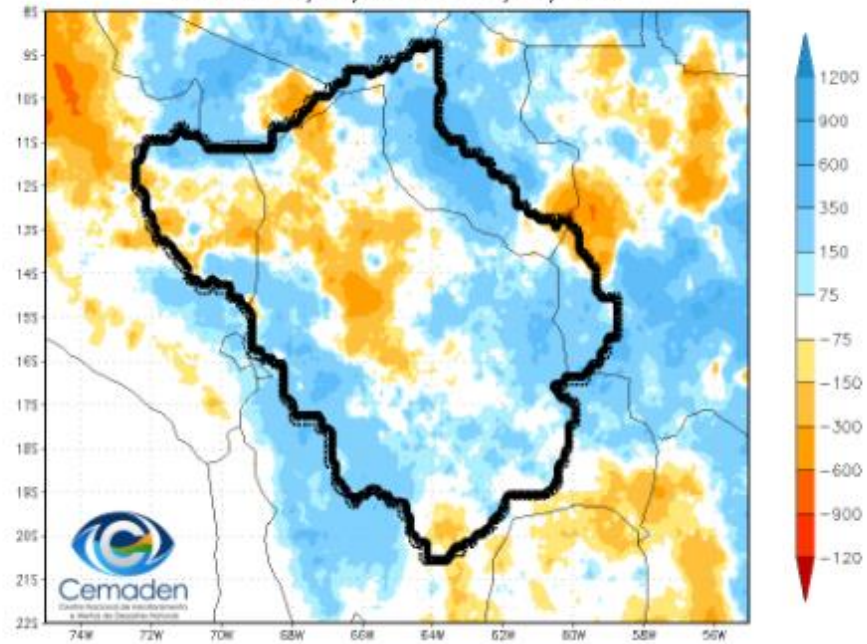


Precipitação Acumulada no Ano Hidrológico

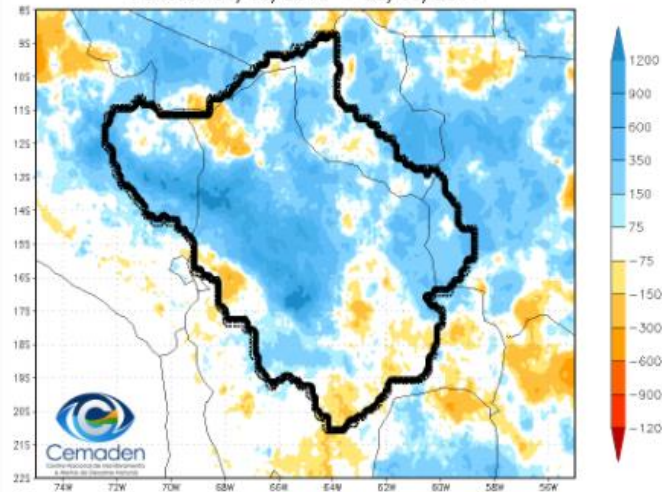
Precipitação Acumulada (mm)
Período: 01/10/2021 - 28/03/2022



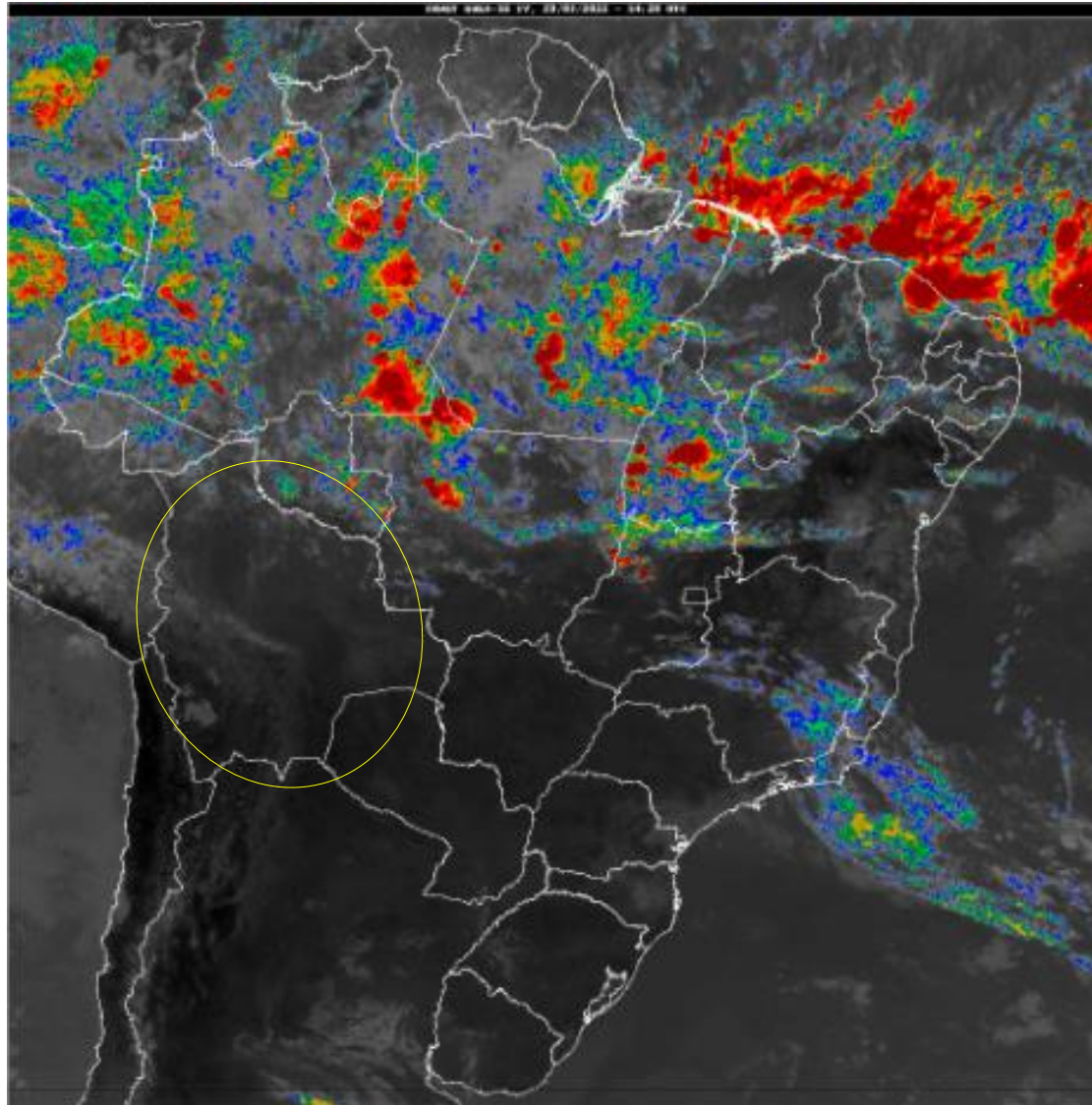
Anomalia de Precipitação Média (mm)
Período: 01/10/2021 - 28/03/2022



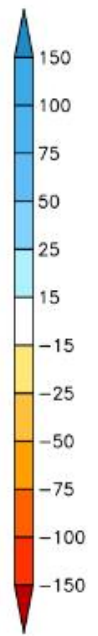
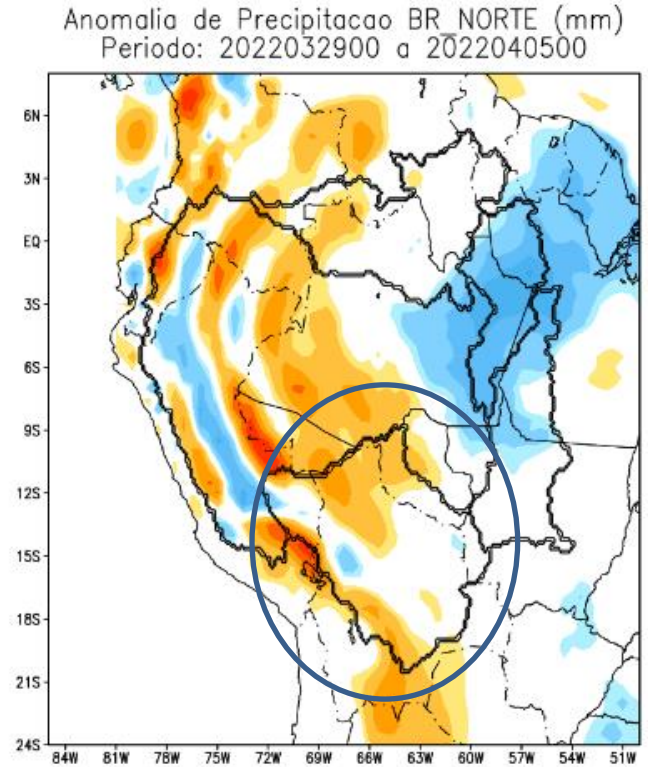
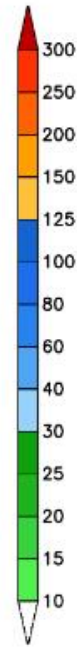
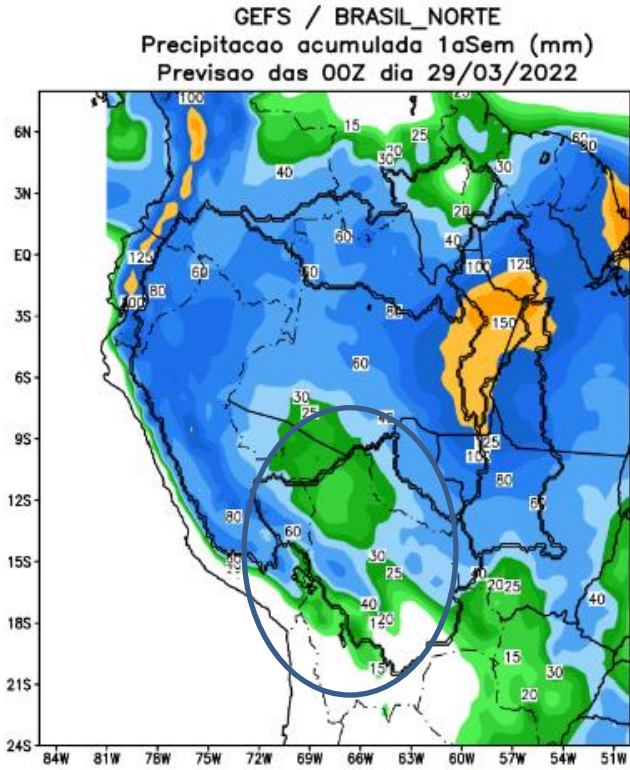
Anomalia de Precipitação Média (mm)
Período: 01/10/2013 - 28/03/2014



Situação meteorológica atual



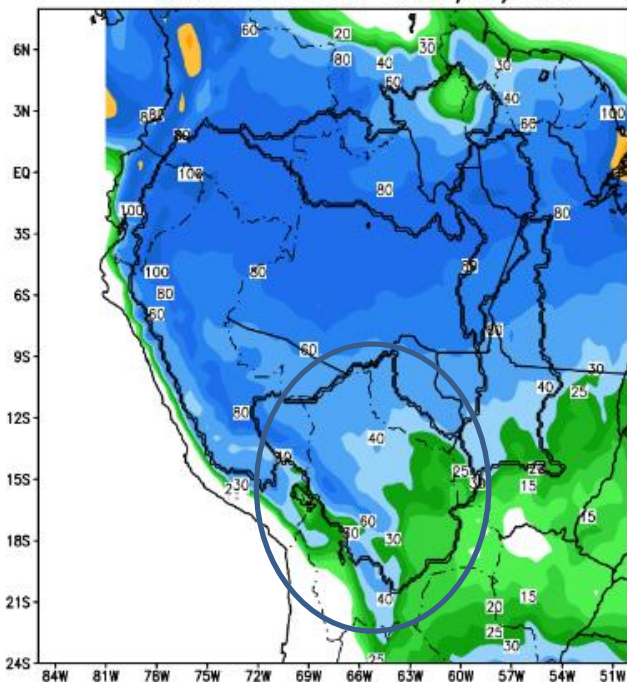
Previsão de chuva para os próximos 7 dias



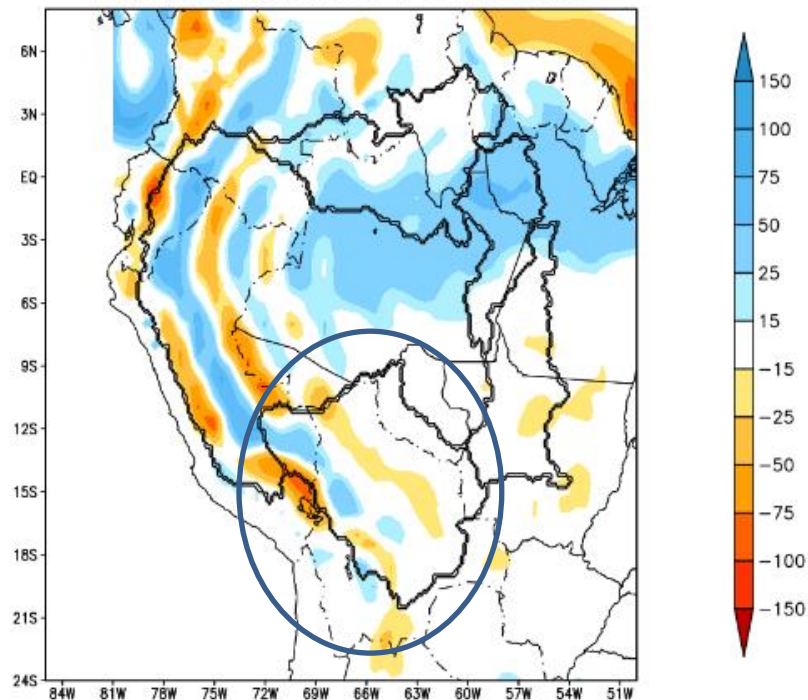
Modelo GFS/NOAA

Tendência para a Segunda Semana

GEFS / BRASIL_NORTE
Precipitacao acumulada 2aSem (mm)
Previsao das 00Z dia 29/03/2022

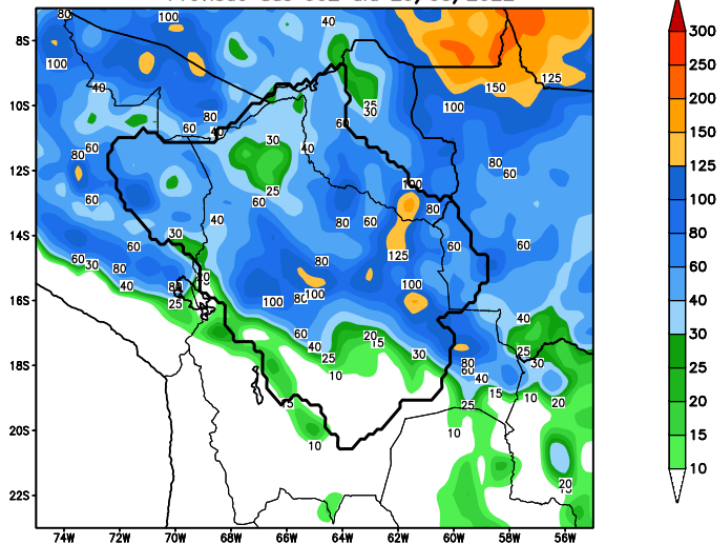


Anomalia de Precipitacao BR NORTE (mm)
Periodo: 2022040600 a 2022041200

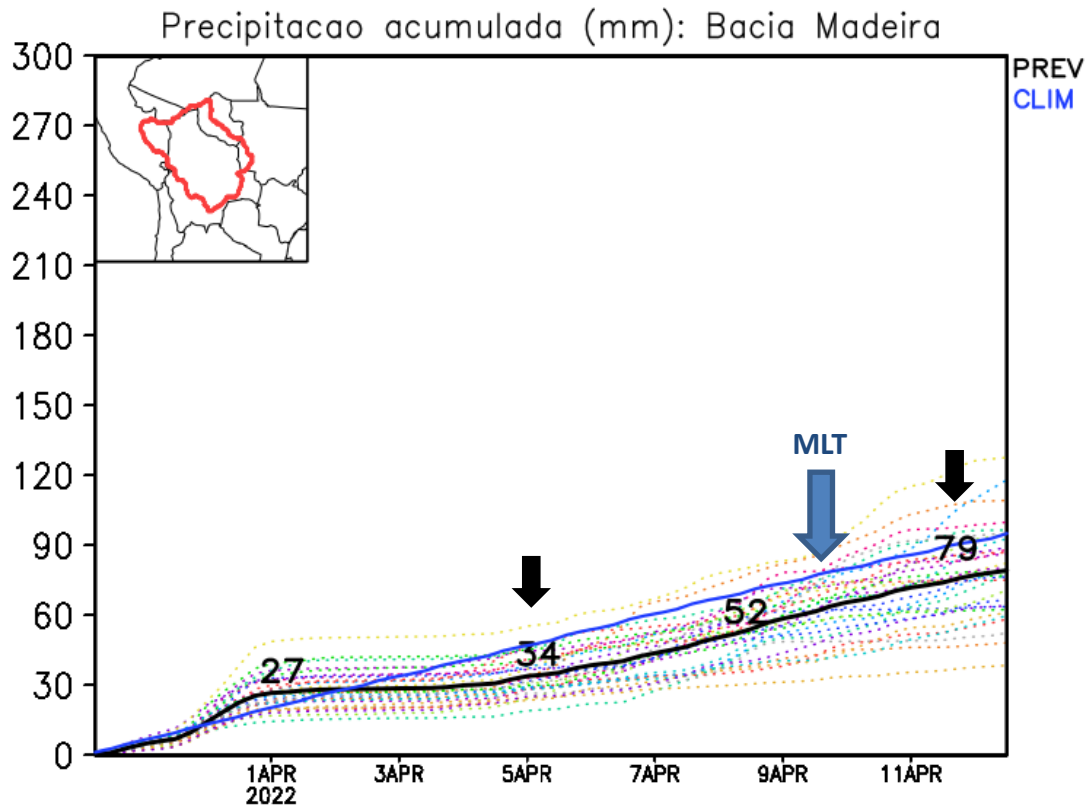
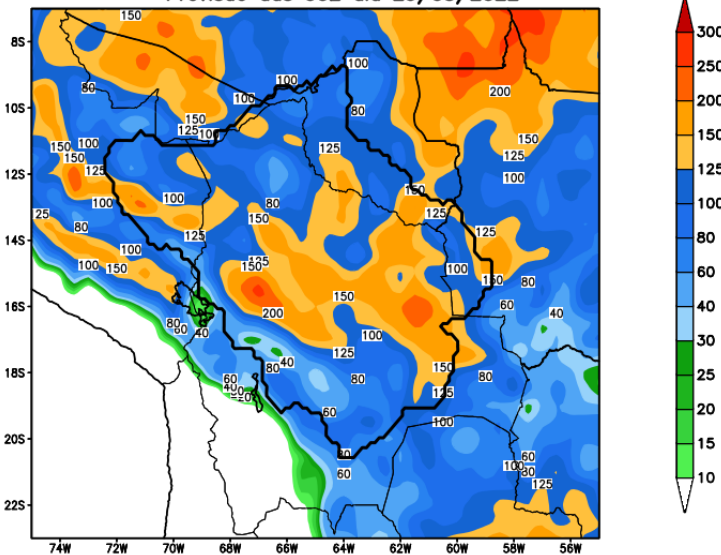


Previsão de chuva para o Rio Madeira

GEFS_BC / Bacia do Rio Madeira
 Prec. acumulada com correcao de vies em 7 dias (mm)
 Previsao das 00Z dia 29/03/2022

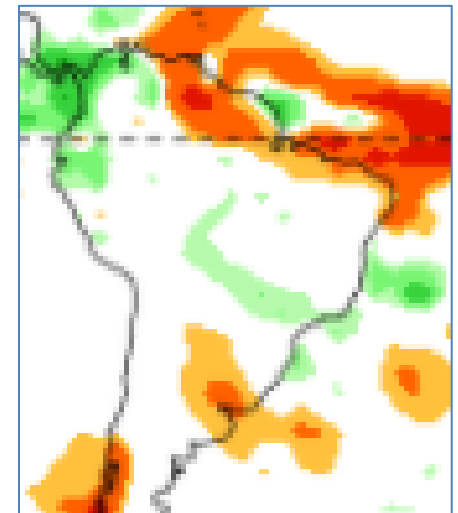
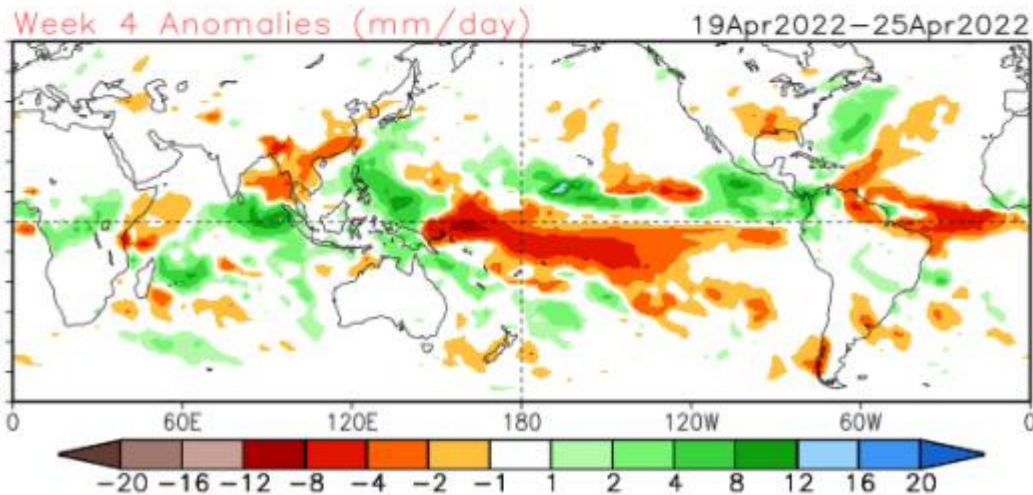
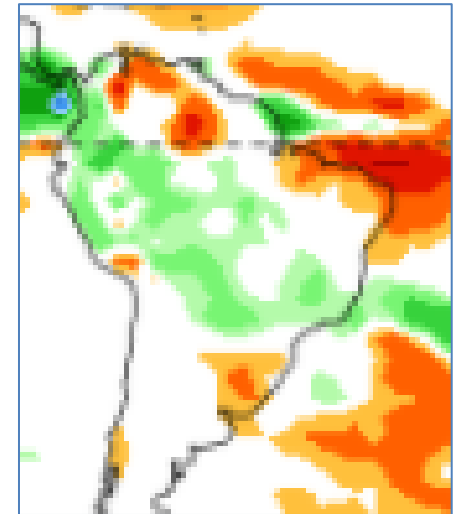
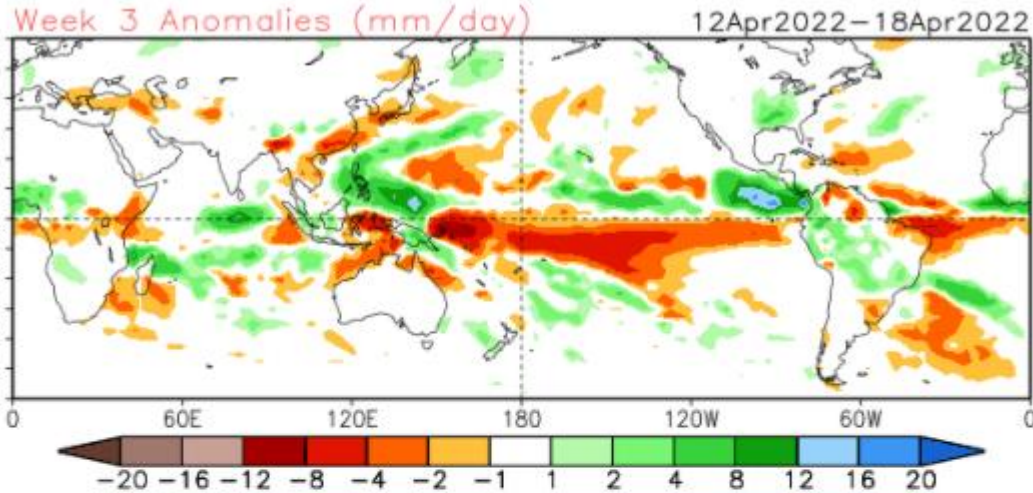


GEFS_BC / Bacia do Rio Madeira
 Prec. acumulada com correcao de vies em 14 dias (mm)
 Previsao das 00Z dia 29/03/2022



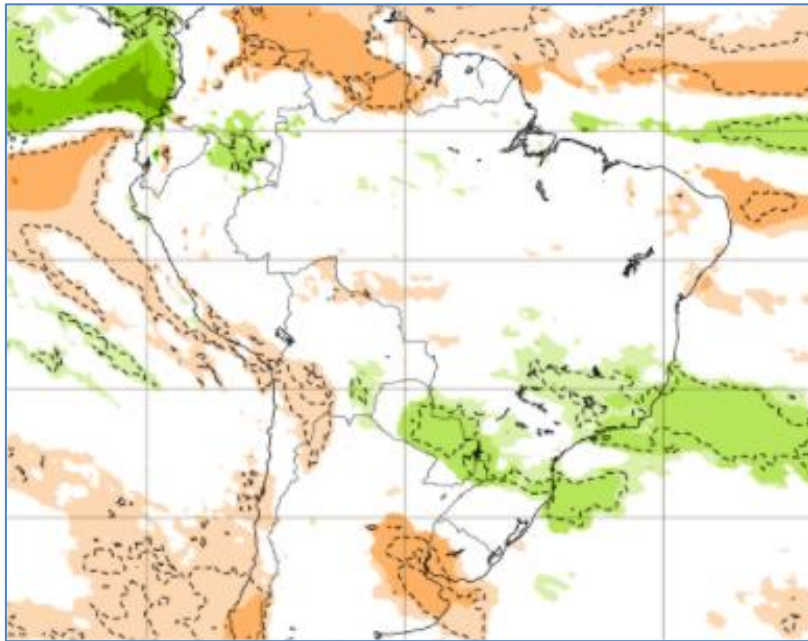
Tendência 3a e 4a semanas

16 Member Ensemble Mean Forecast from 28Mar2022

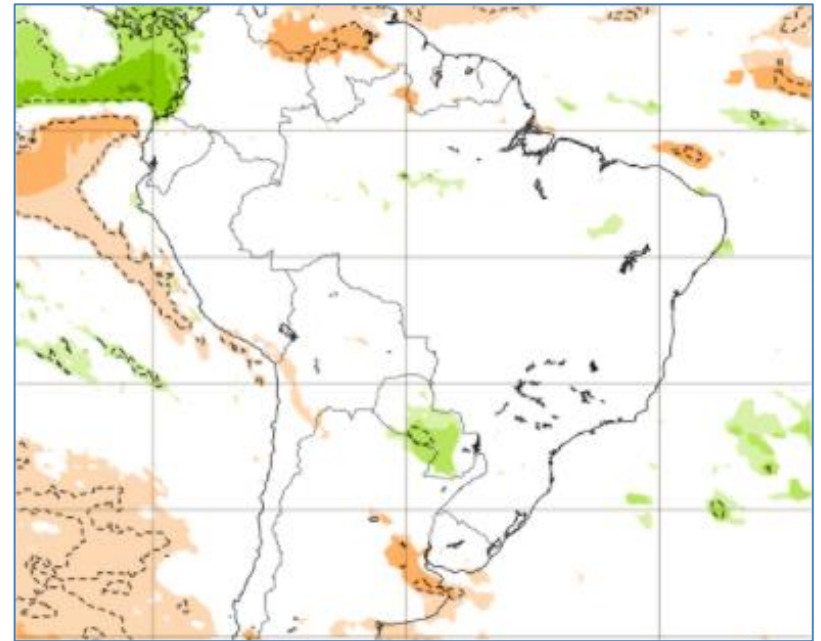


Tendência para 3ª e 4ª semanas

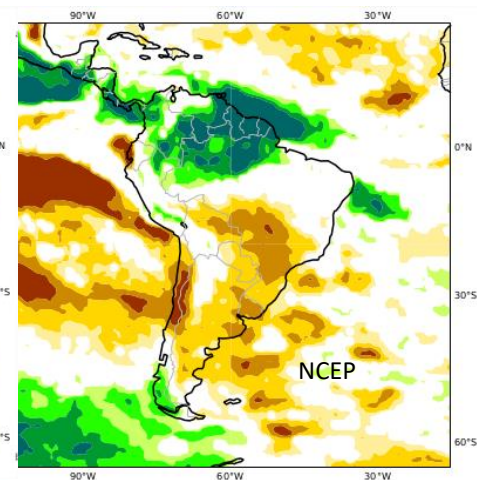
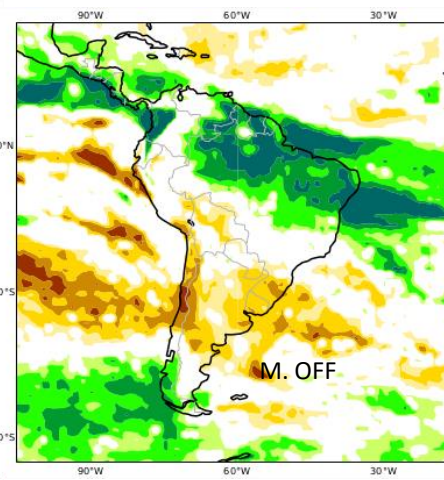
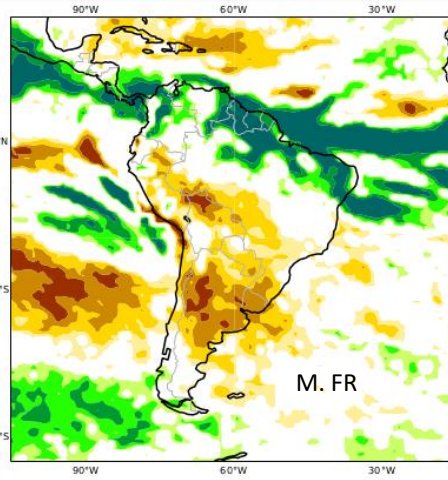
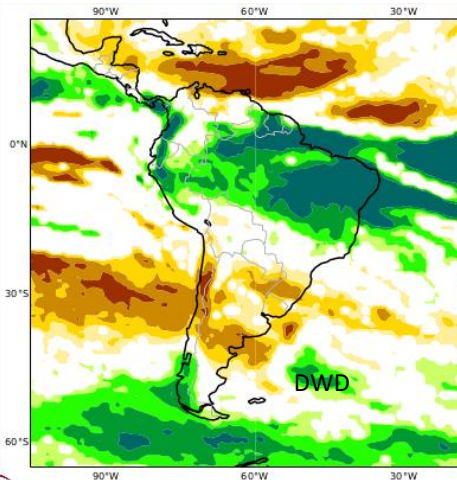
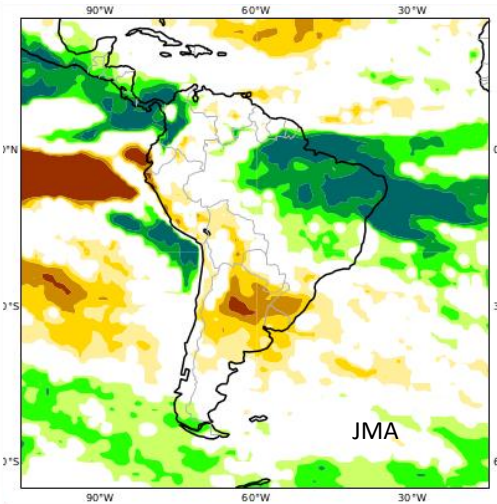
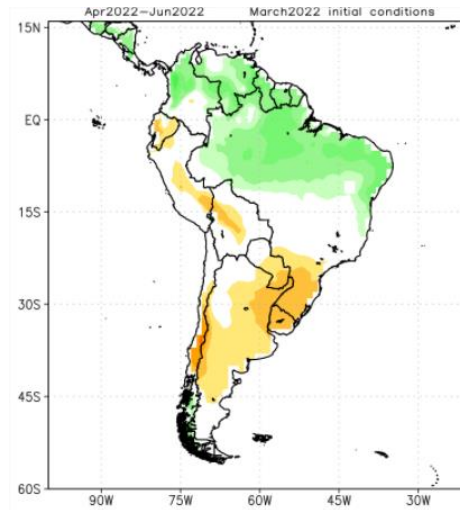
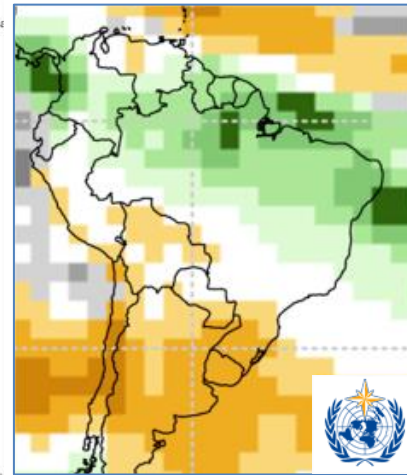
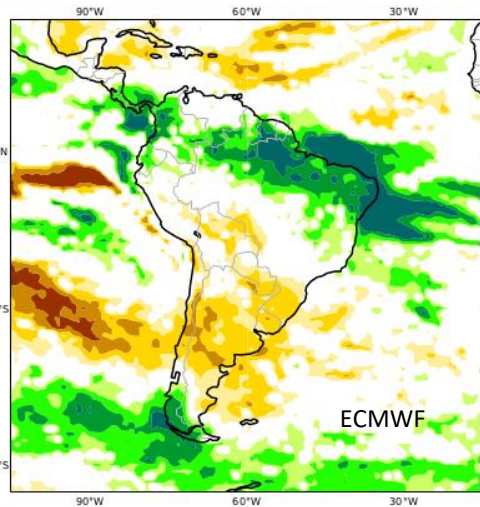
11-18/04



18-25/04

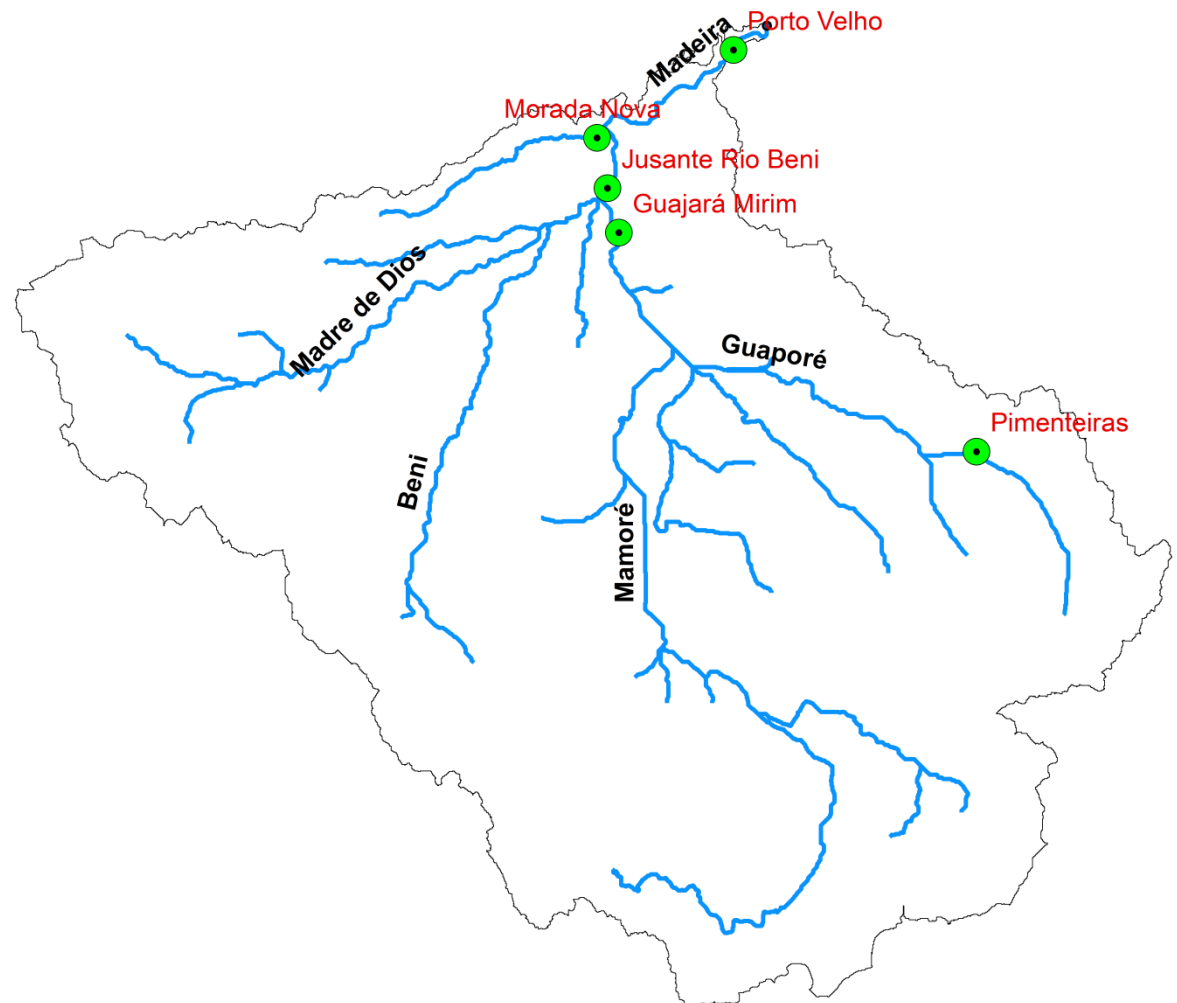


Previsão sazonal de Chuva (AMJ)

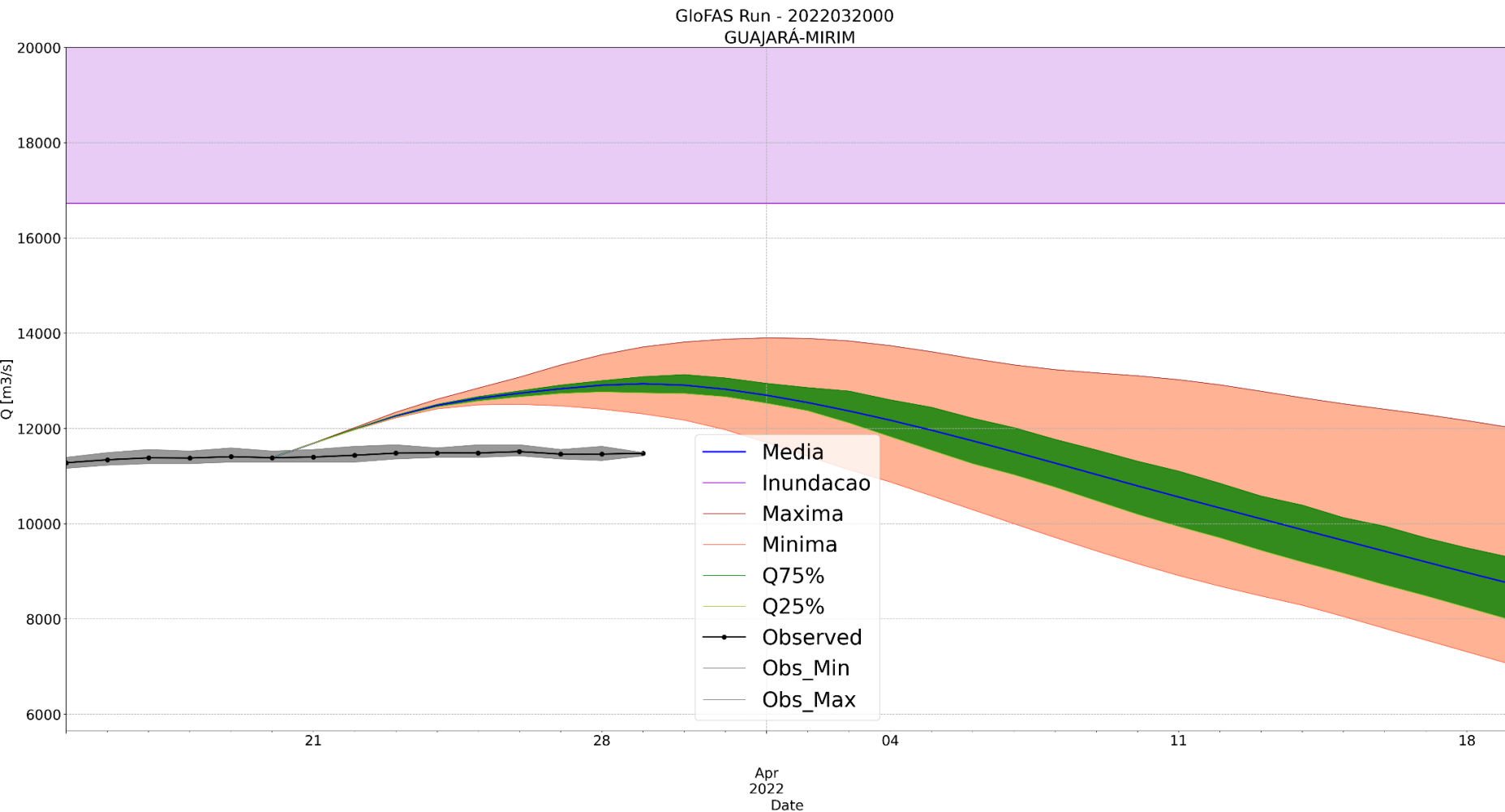


Previsão Hidrológica: Bacia do Rio Madeira

Previsão de vazão realizada por meio do Modelo Hidrológico Distribuído – Lisflood/GLOFAS (Chuva-Vazão), usando como entradas as previsões de precipitação fornecidas pelo modelo por conjunto ECMWF (Centro Europeu)

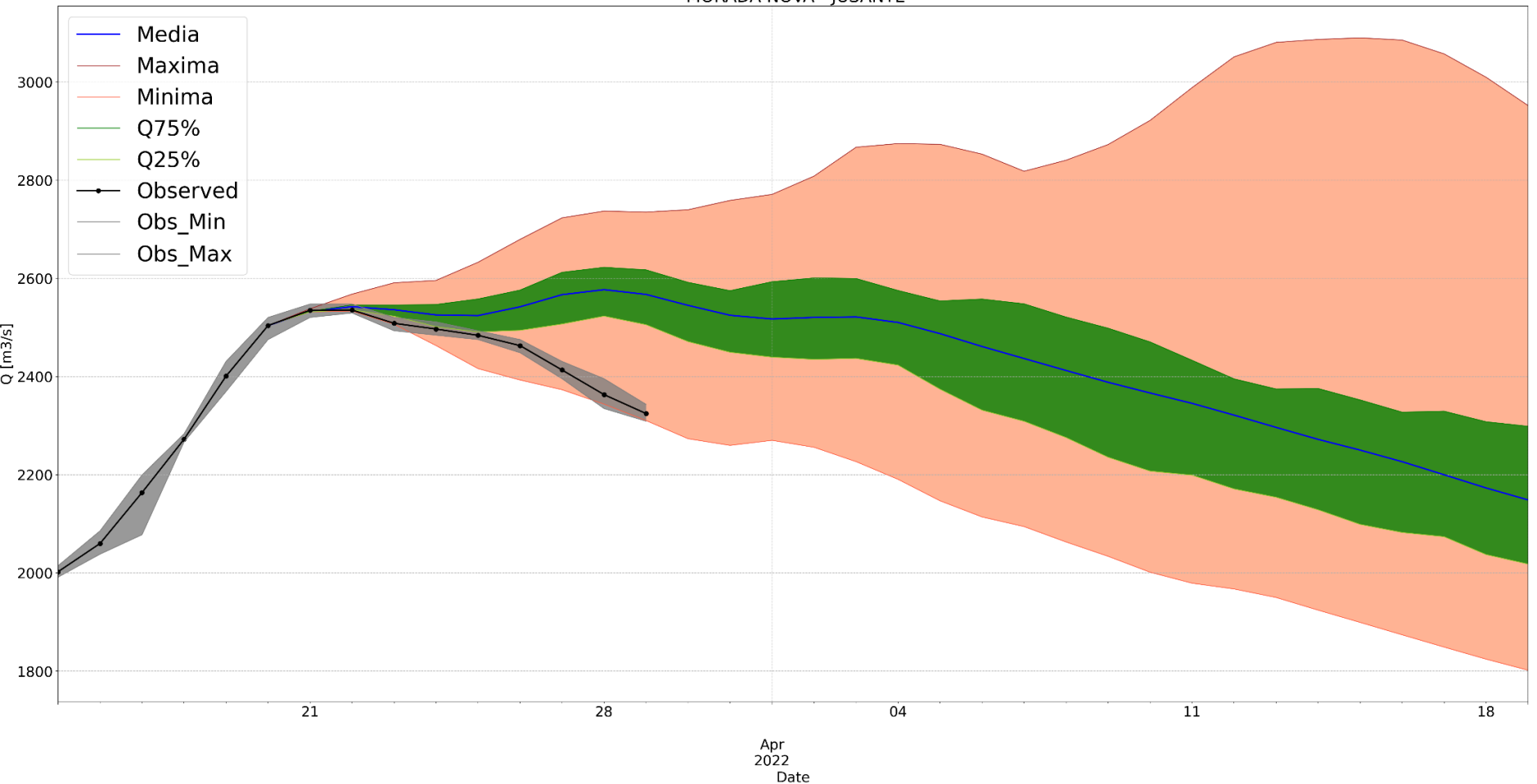


Análise Previsão: 20/03/2022

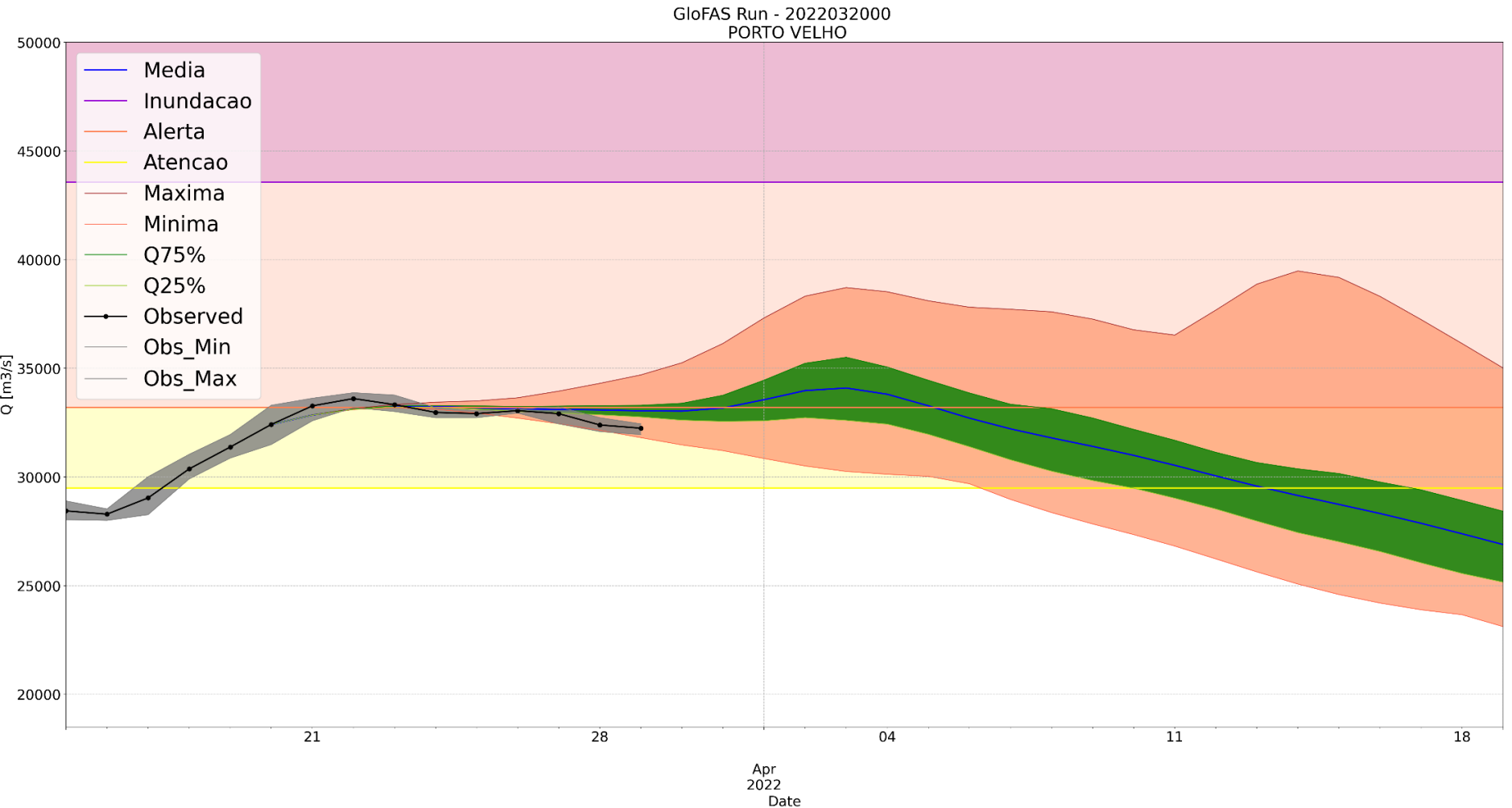


Análise Previsão: 20/03/2022

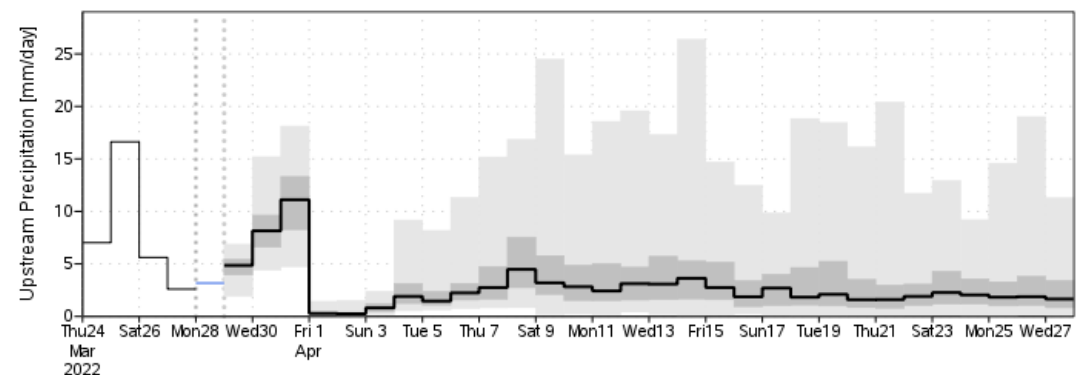
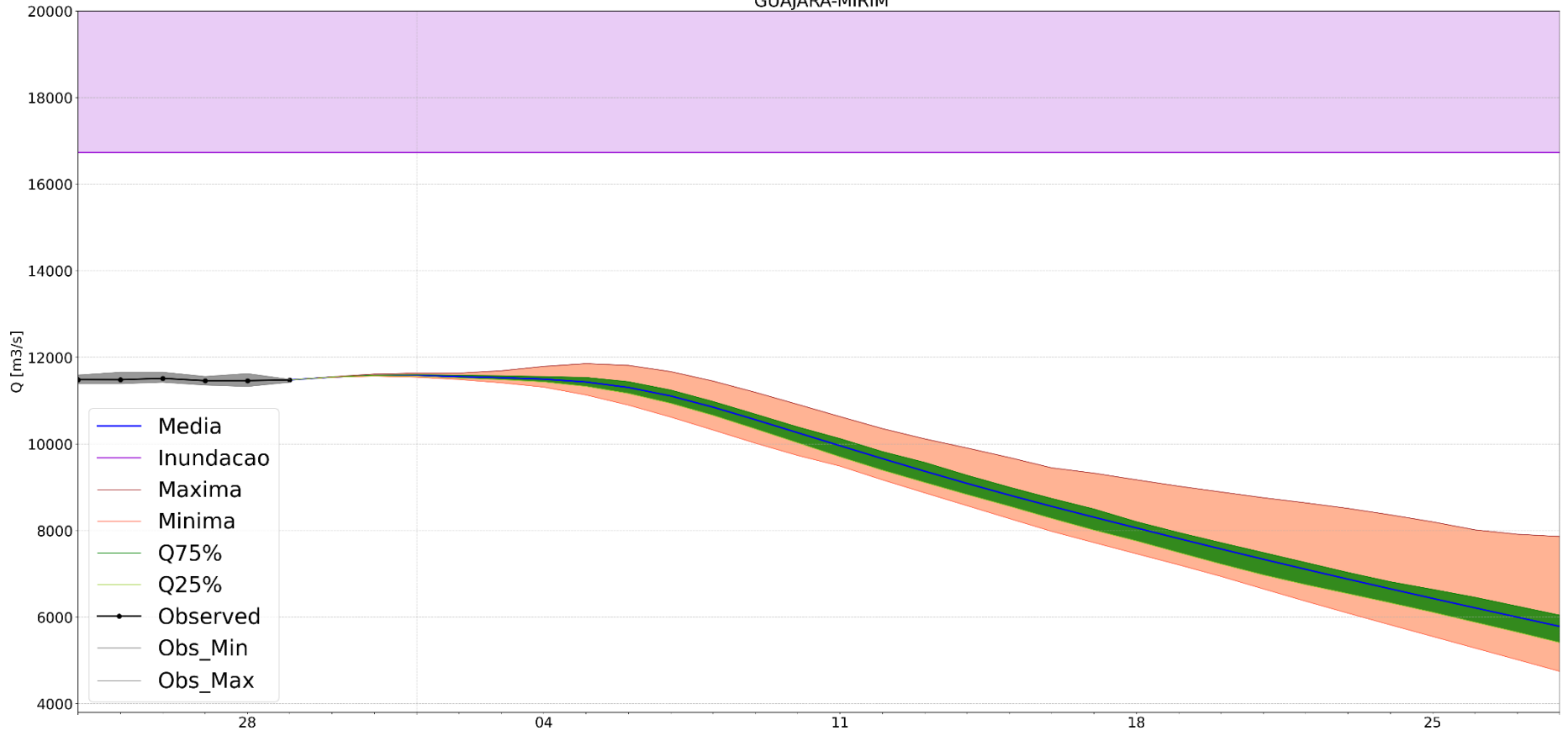
GloFAS Run - 2022032000
MORADA NOVA - JUSANTE



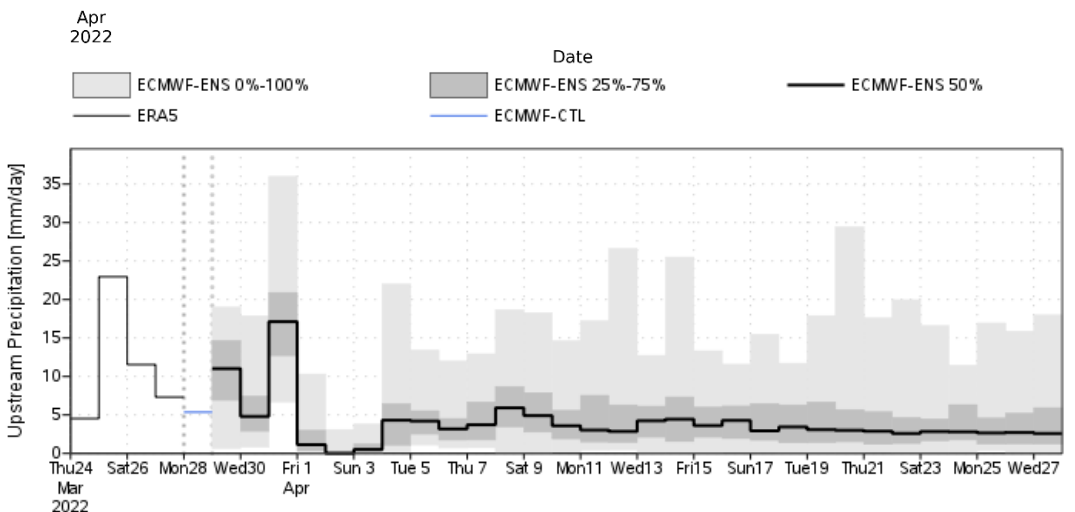
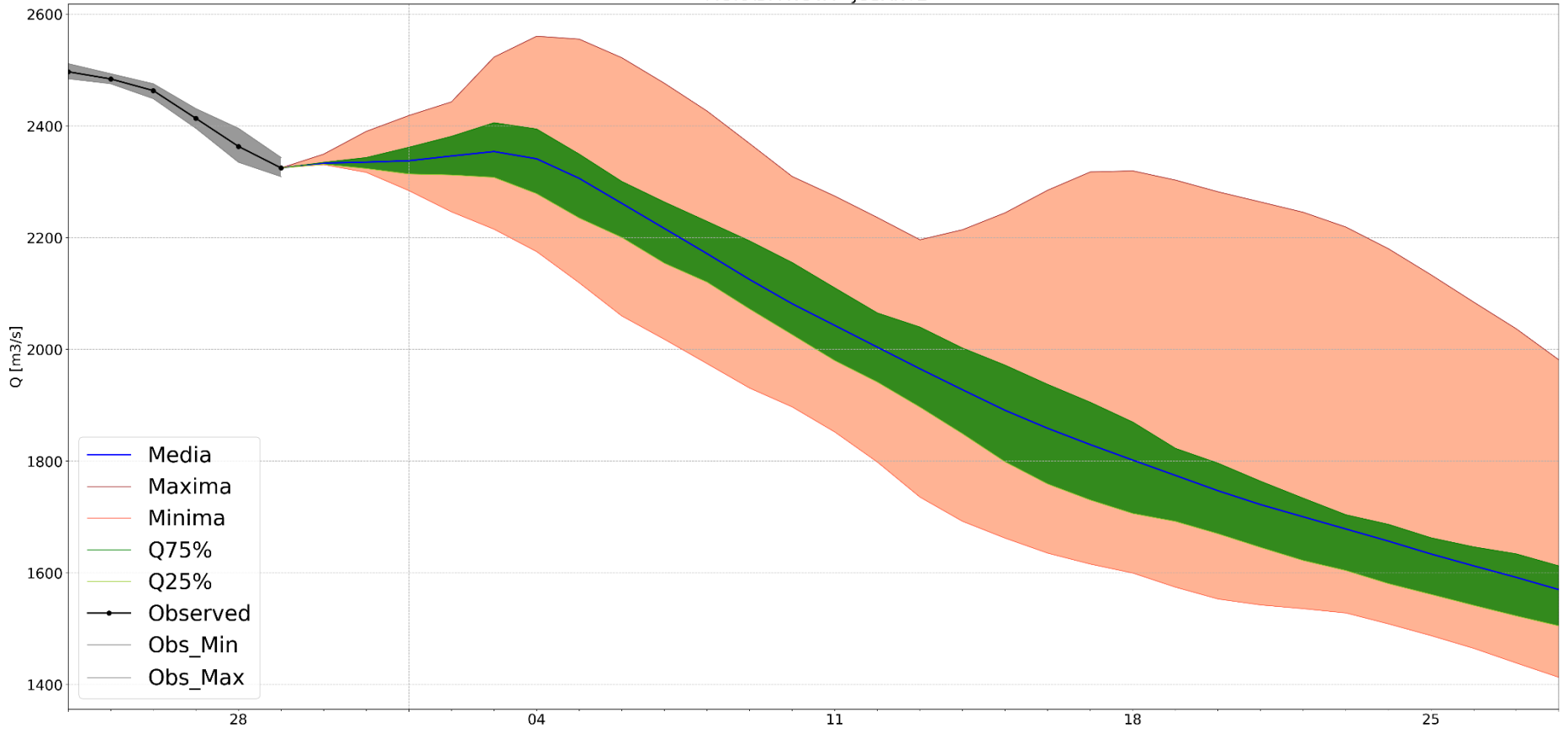
Análise Previsão: 20/03/2022



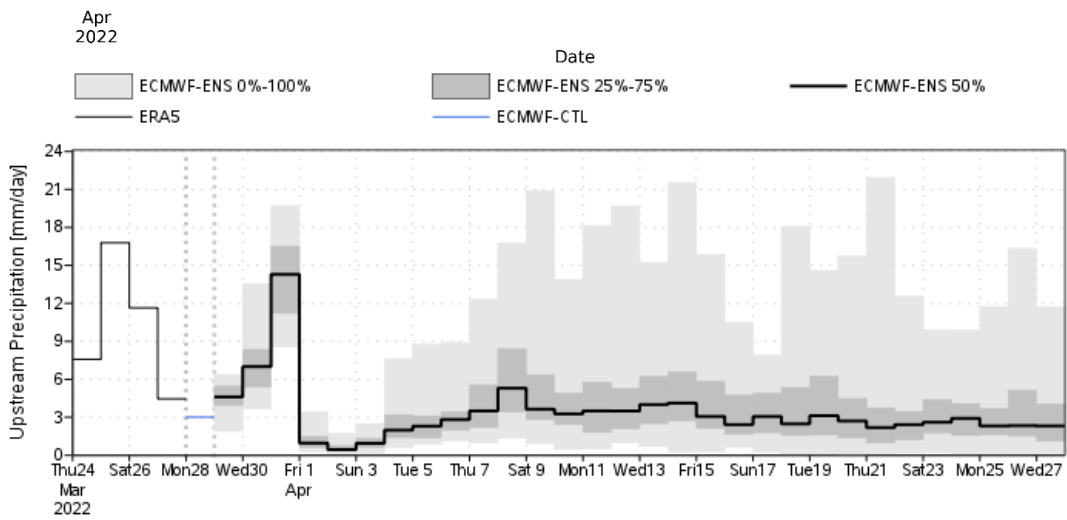
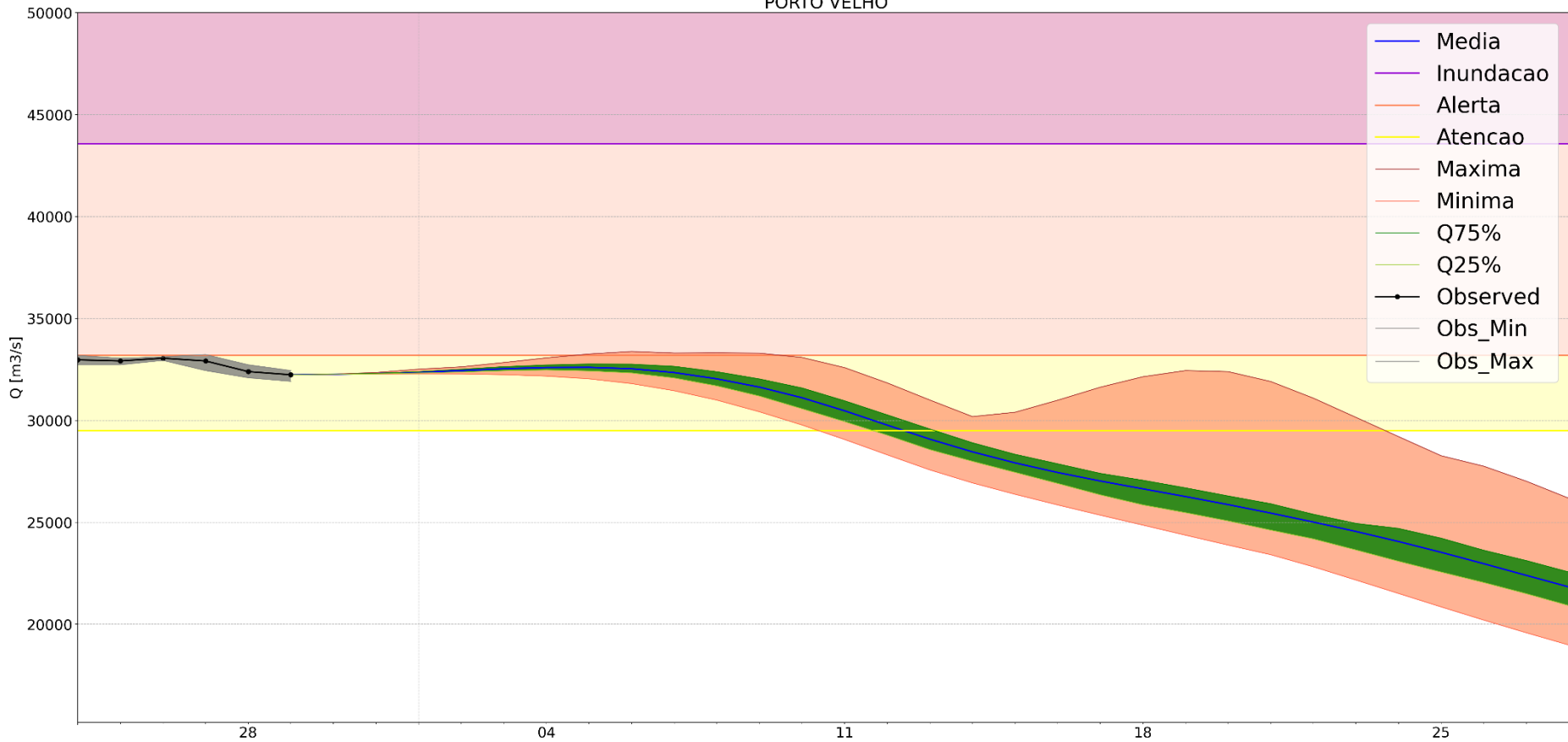
GloFAS Run - 2022032900
GUAJARÁ-MIRIM



GloFAS Run - 2022032900
MORADA NOVA - JUSANTE

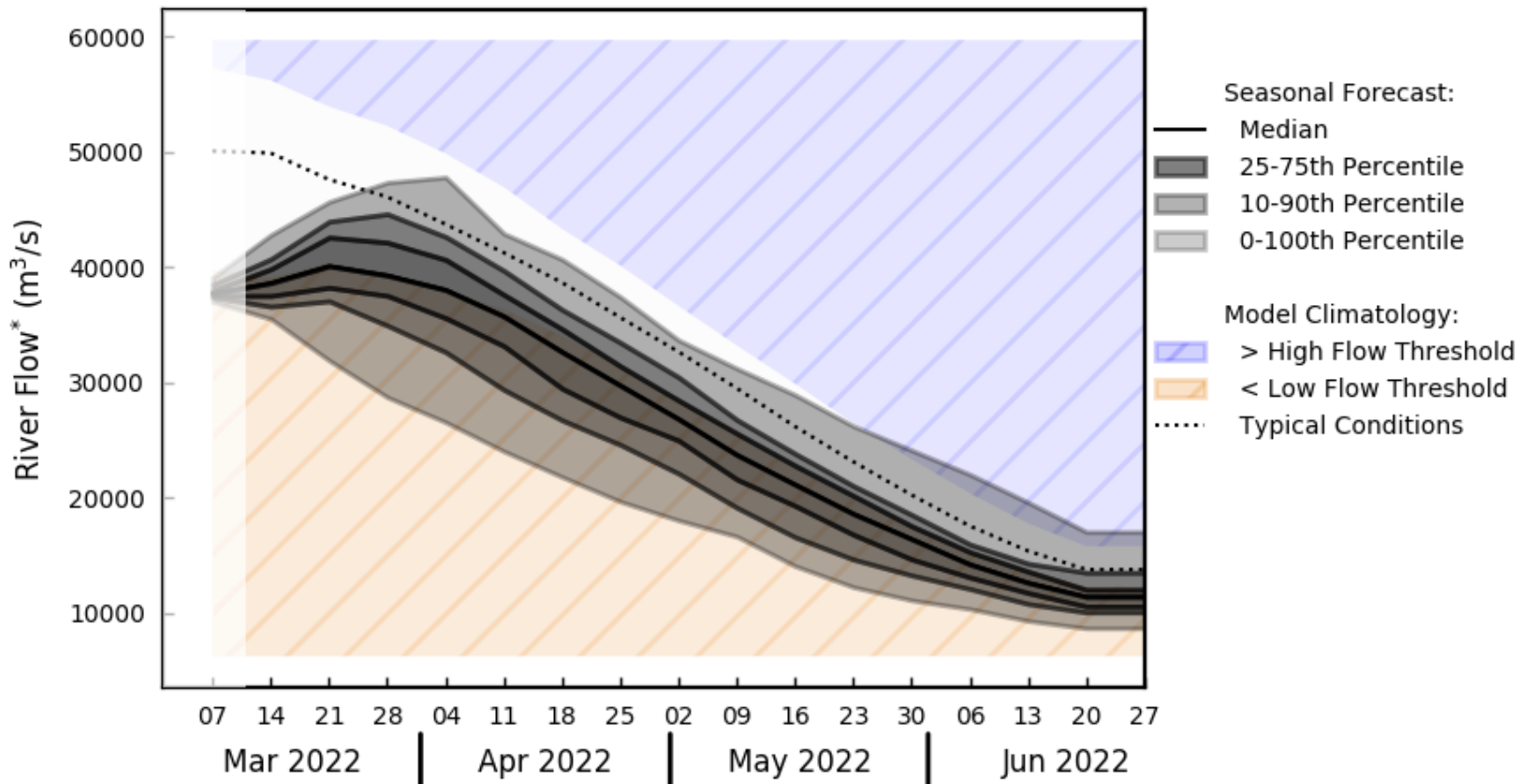


GloFAS Run - 2022032900
PORTO VELHO



Previsão Sazonal: GLOFAS

Porto Velho



*River flow is a weekly average, displayed at start of week (dates shown)

** High and low flow thresholds refer to the 80th and 20th percentiles of the model climatology

Contato:

Márcio Augusto Ernesto de Moraes

Pesquisador Titular

marcio.moraes@cemaden.gov.br

(12) 3205 - 0146

Agradecimentos:

