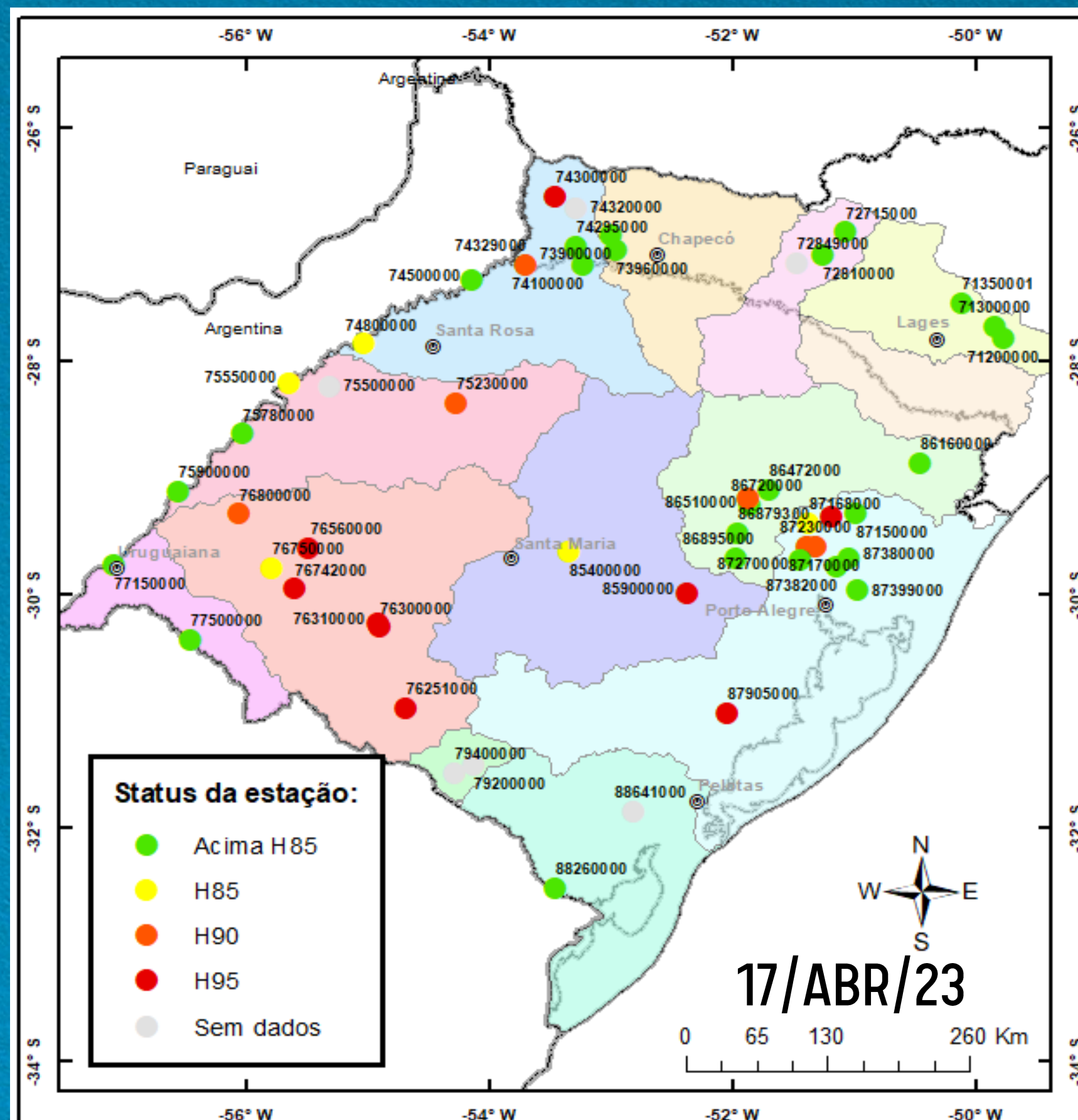
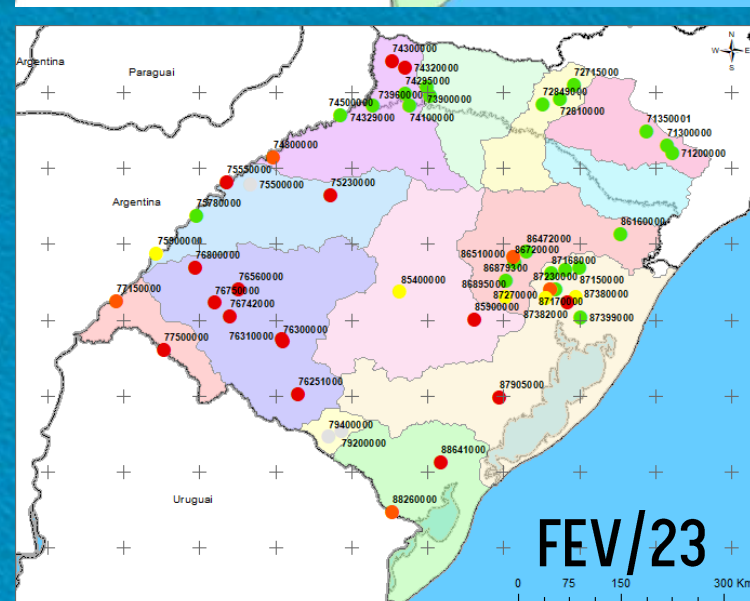
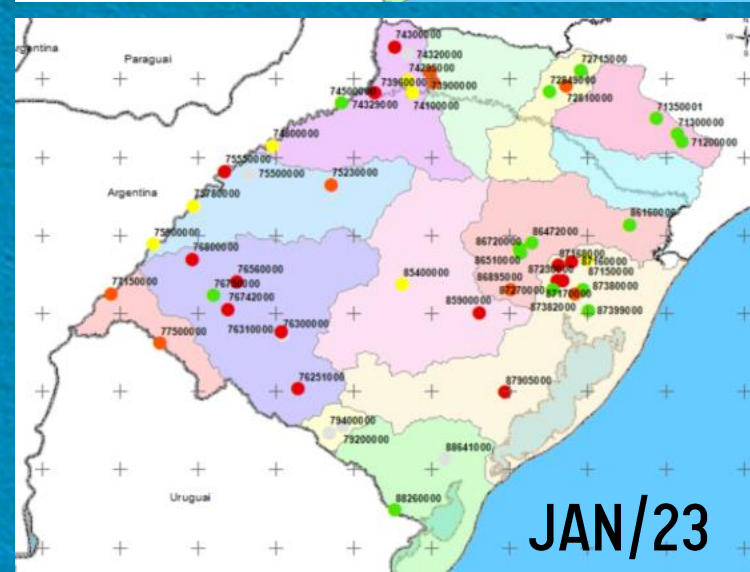
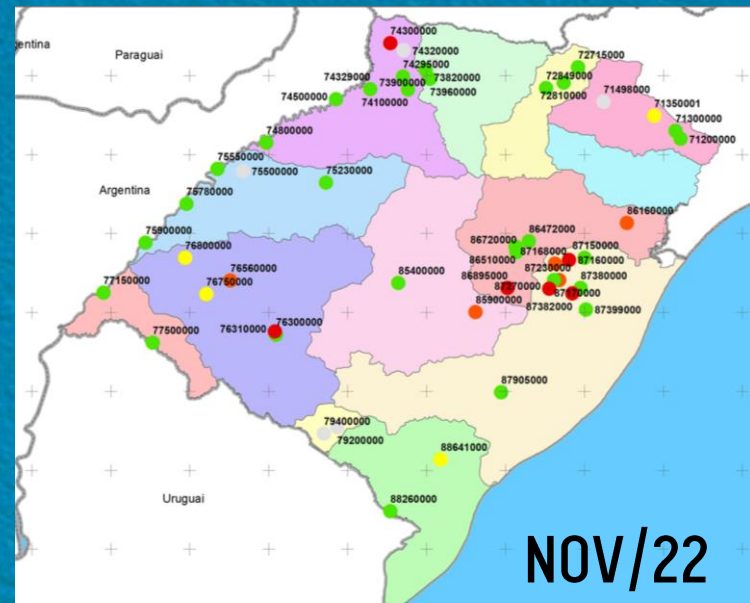


04ª Reunião da Sala de Crise da Região Sul

Serviço Geológico do Brasil SGB/CPRM
Superintendência Regional de Porto Alegre – SUREG/PA

19/04/2023

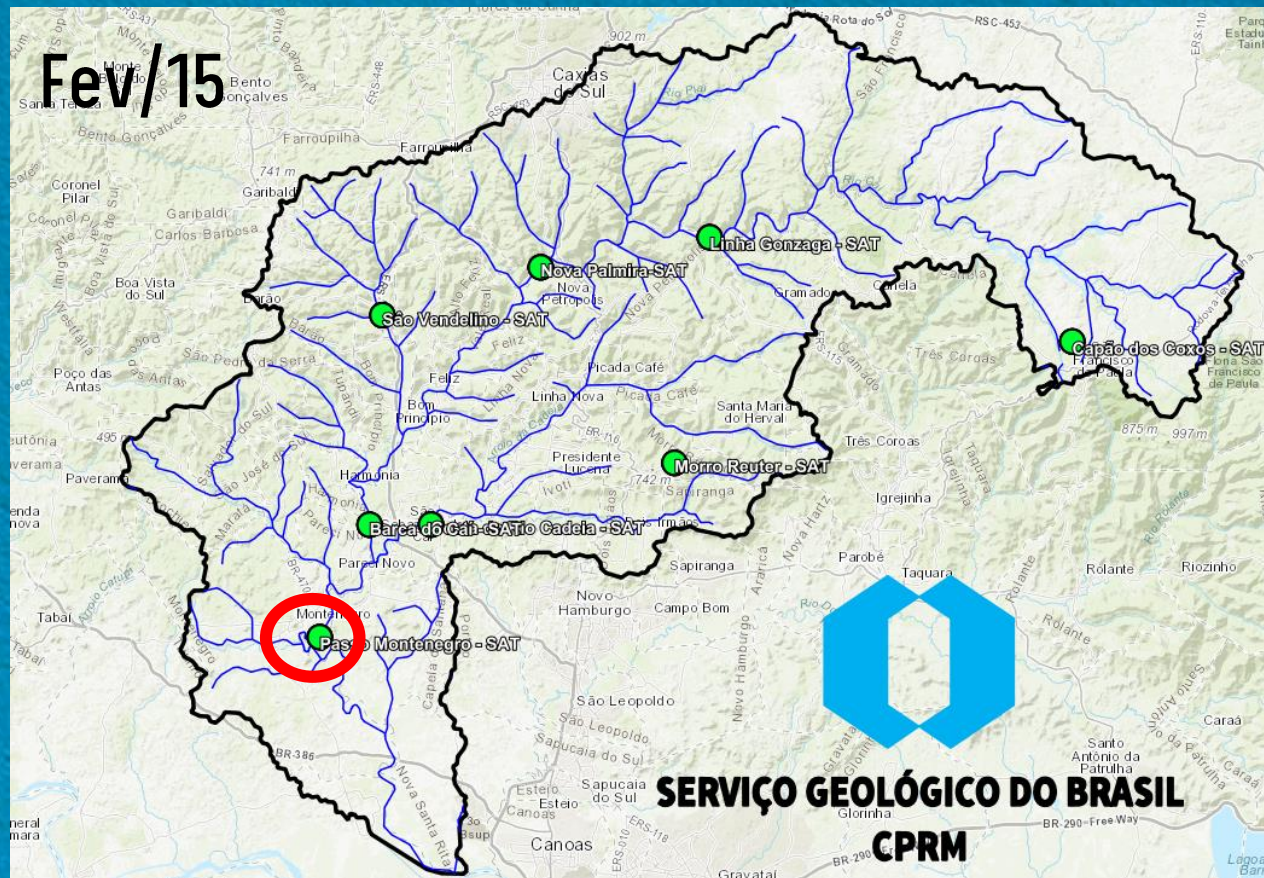
MONITORAMENTO - ABRIL - 2023 - ESTAÇÕES ANA/SGB-RHN



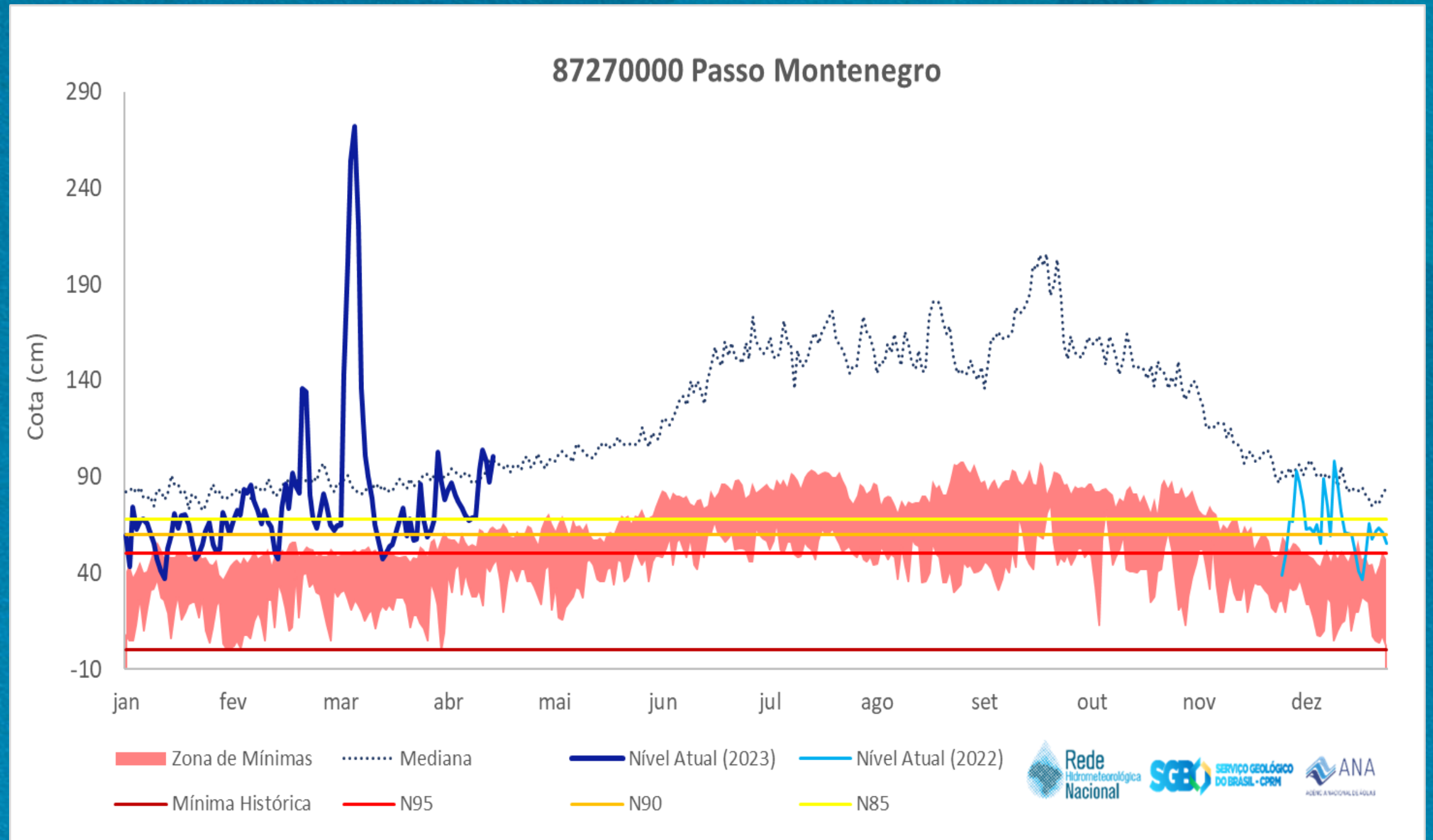
Estações automáticas e telemétricas:

- 45/51 estações com dados disponíveis
- 25 > do H85 ↑
- 9 ≤ do H95 ↓

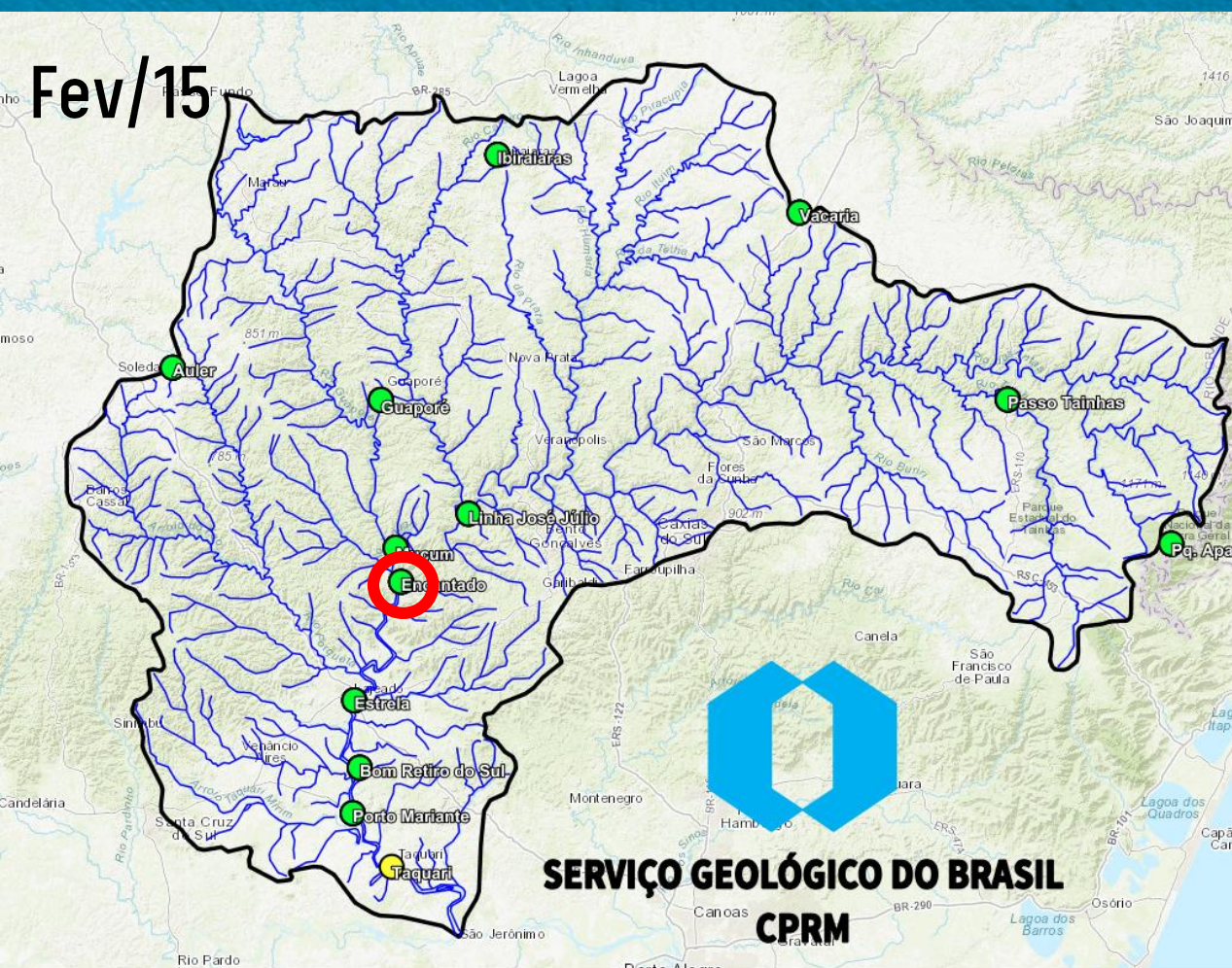
SISTEMA DE ALERTA HIDROLÓGICO - RIO CAÍ



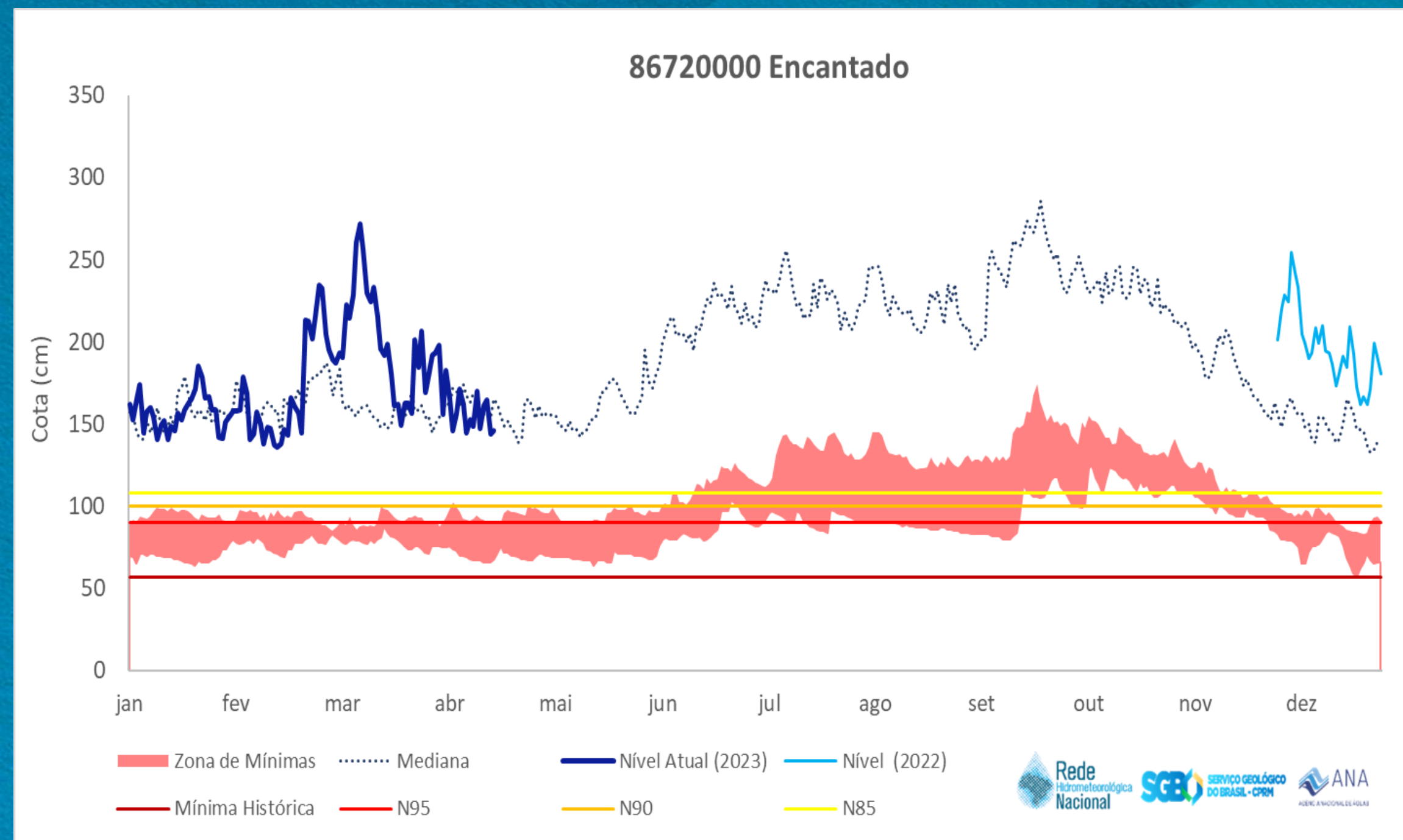
<http://sace.cprm.gov.br/cai/>



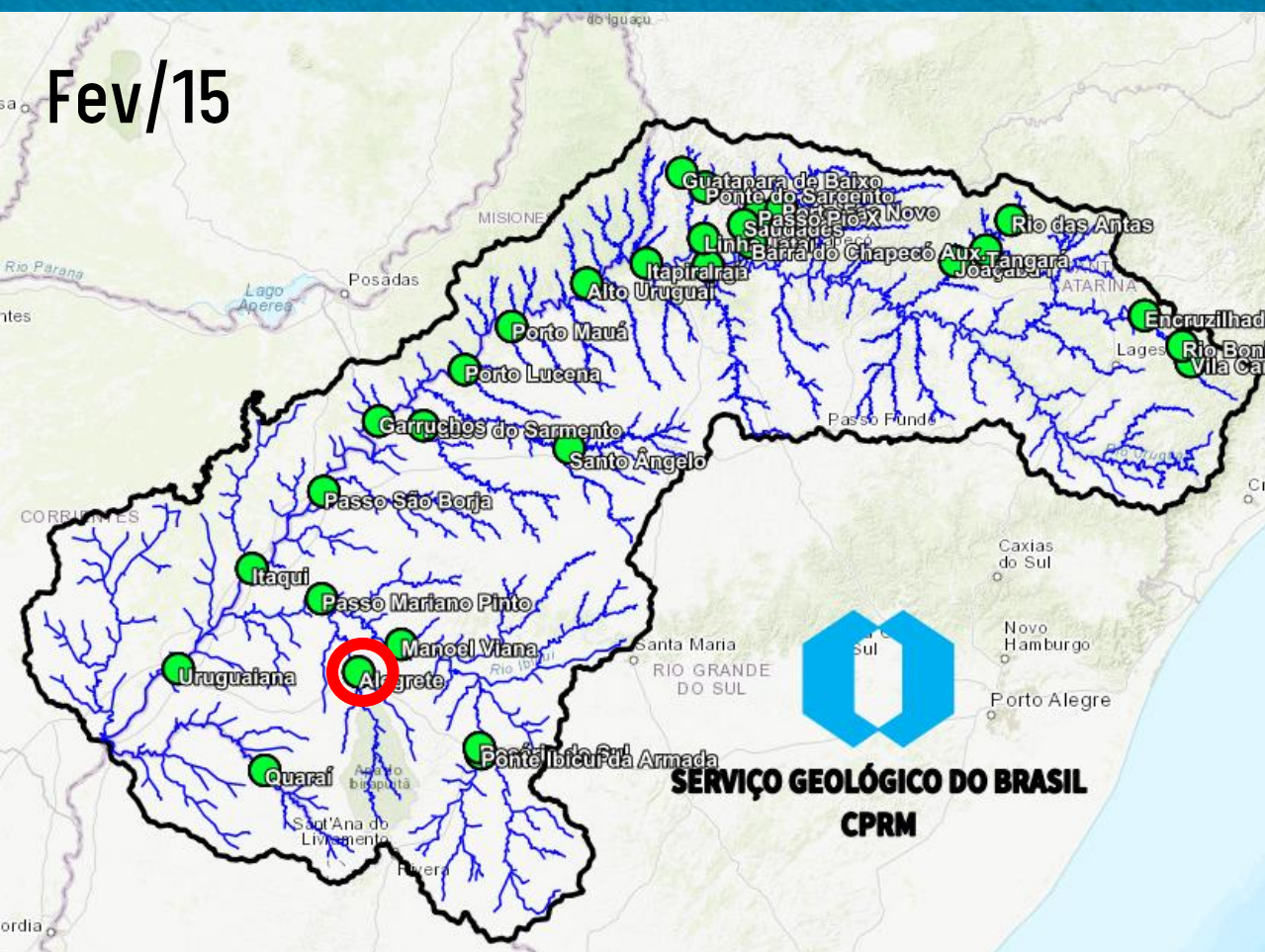
SISTEMA DE ALERTA HIDROLÓGICO - RIO TAQUARI



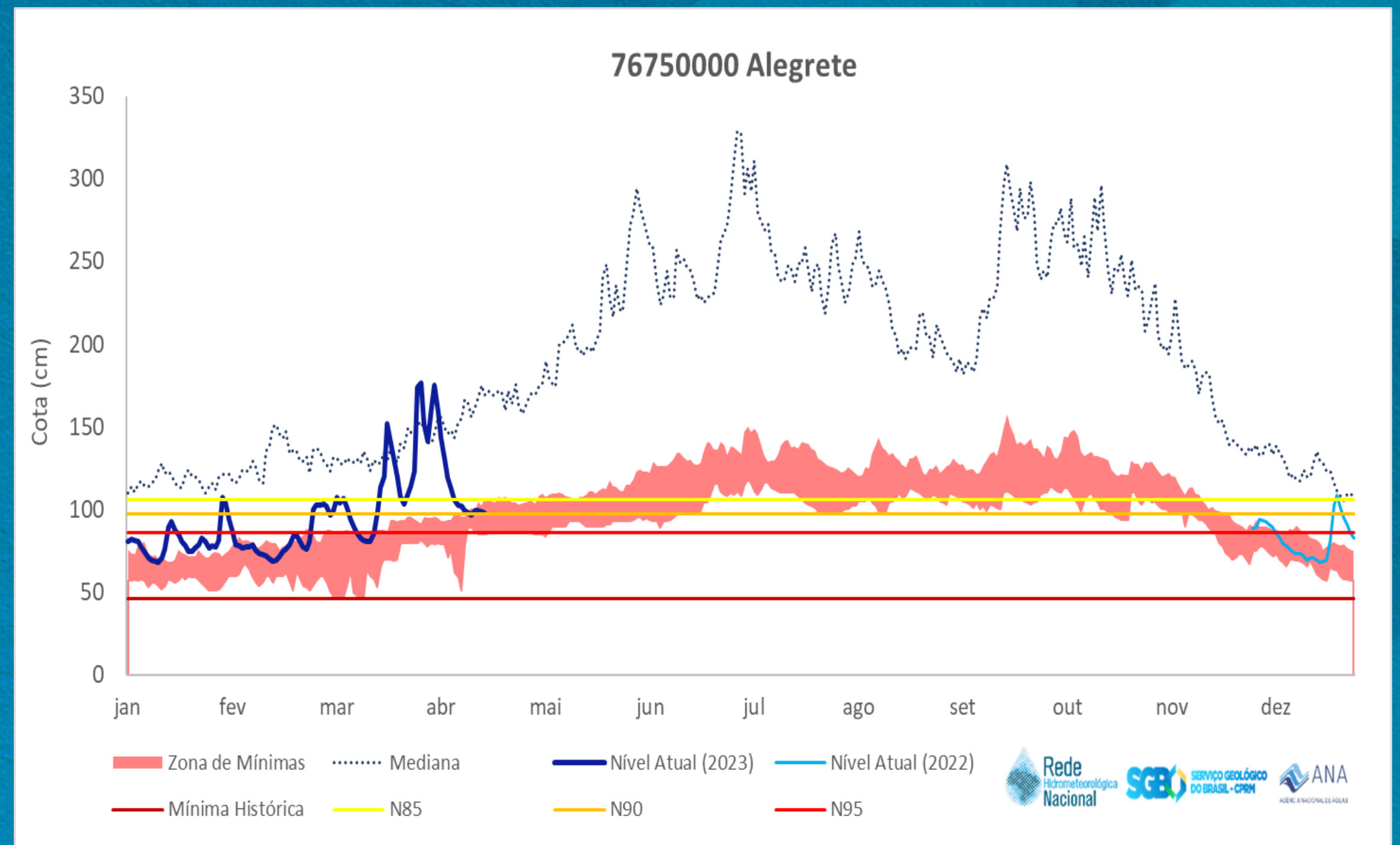
<http://sace.cprm.gov.br/taquari/>



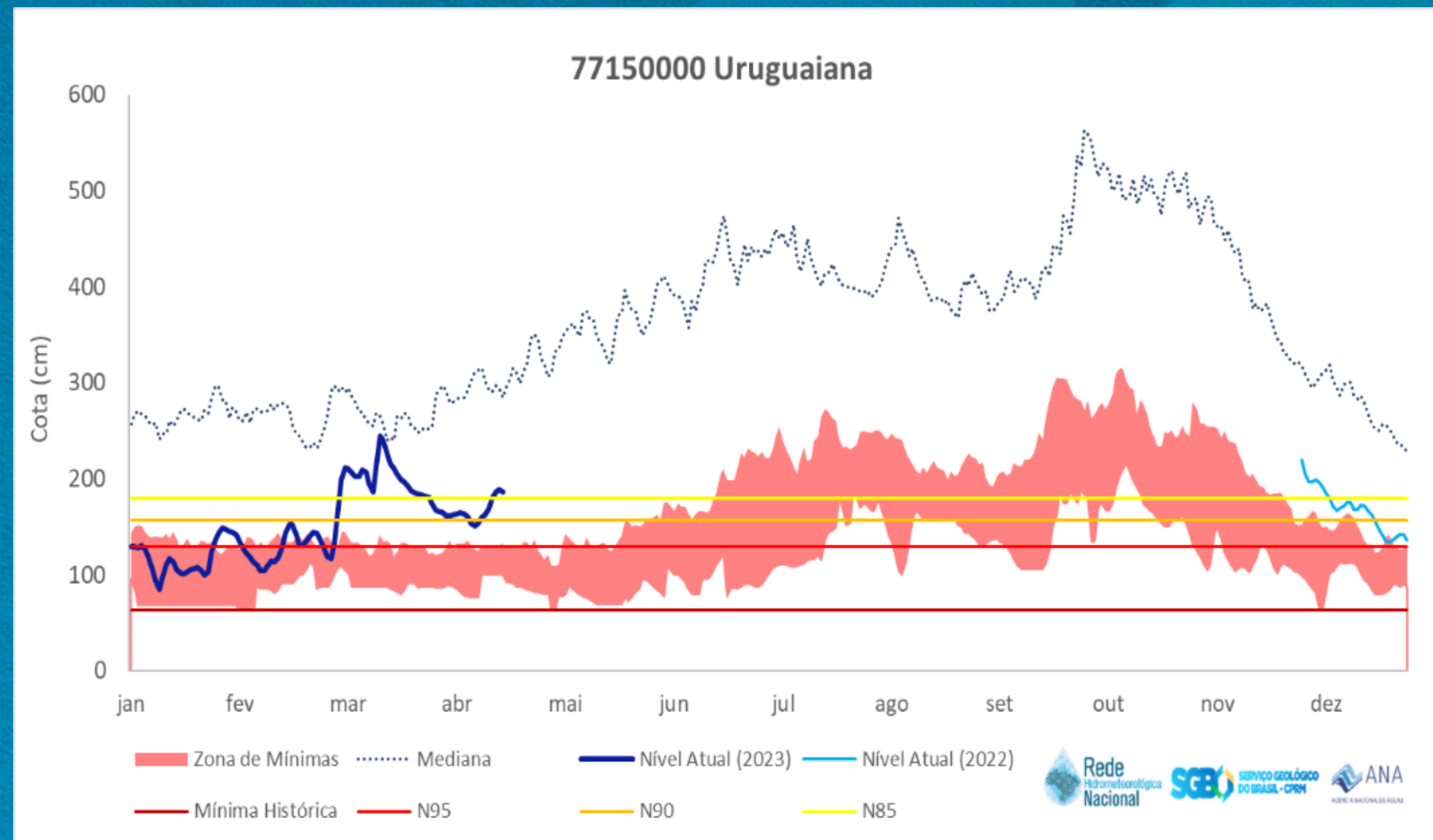
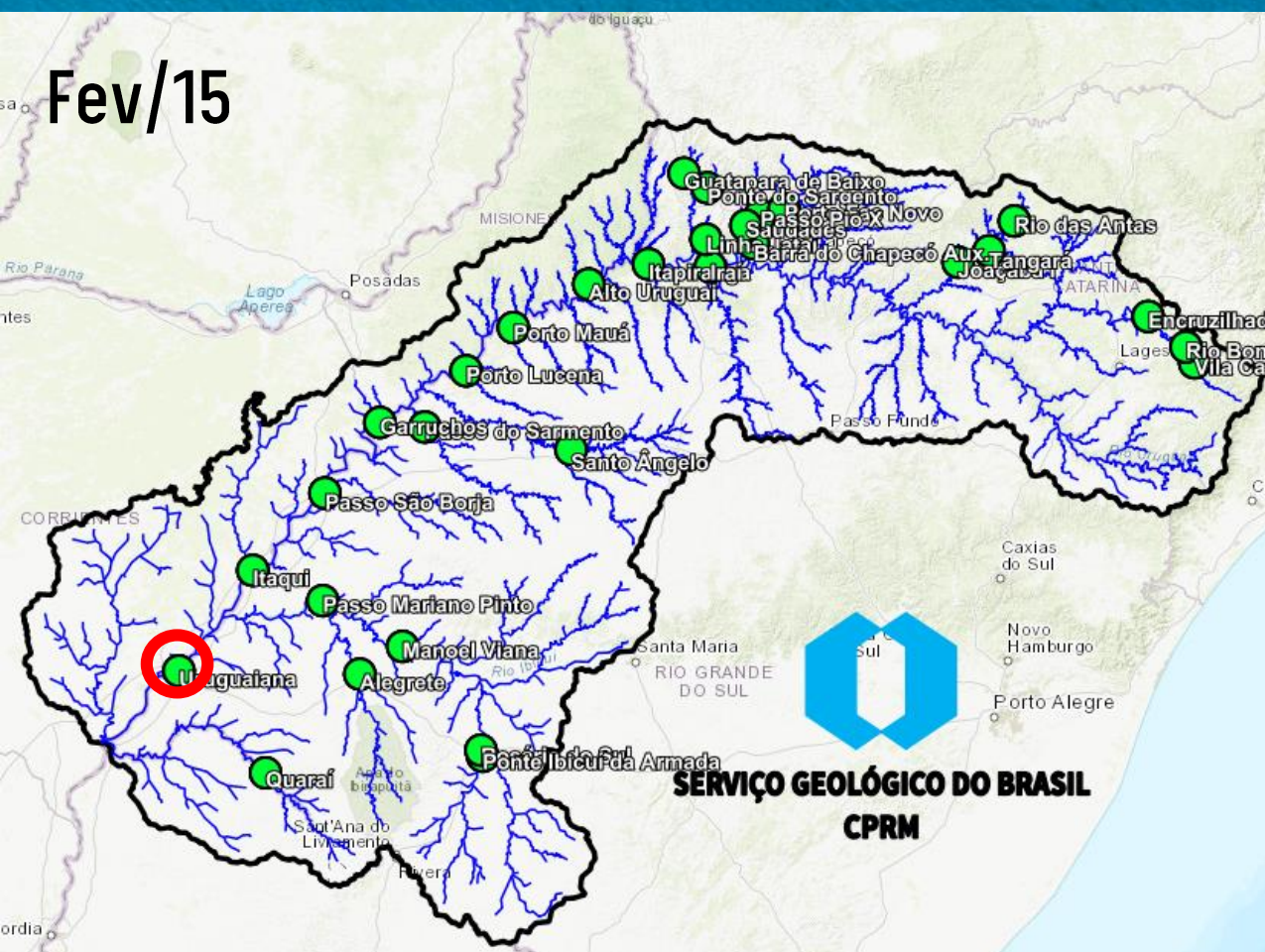
SISTEMA DE ALERTA HIDROLÓGICO - RIO URUGUAI



<http://sace.cprm.gov.br/uruguai/>

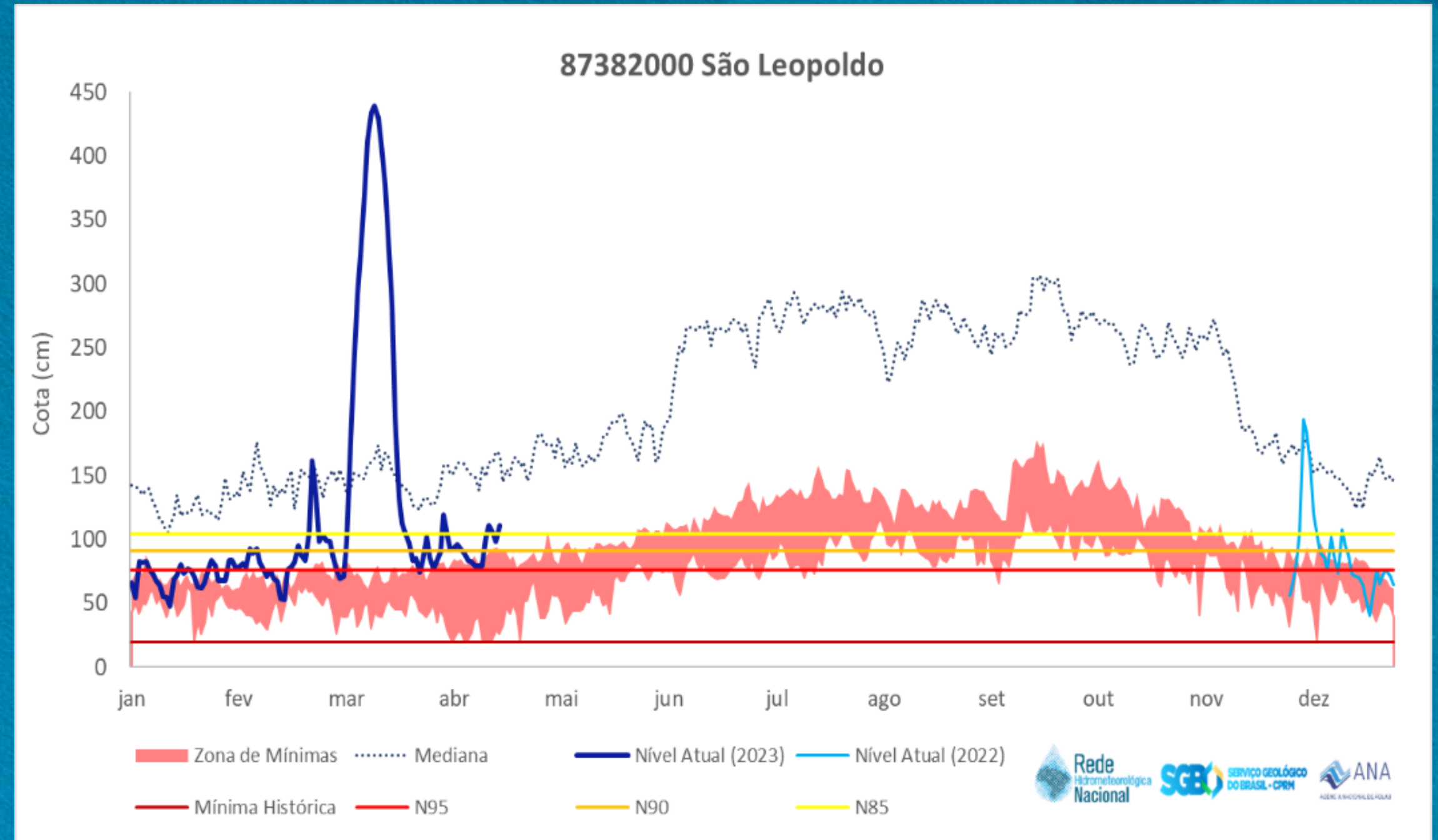
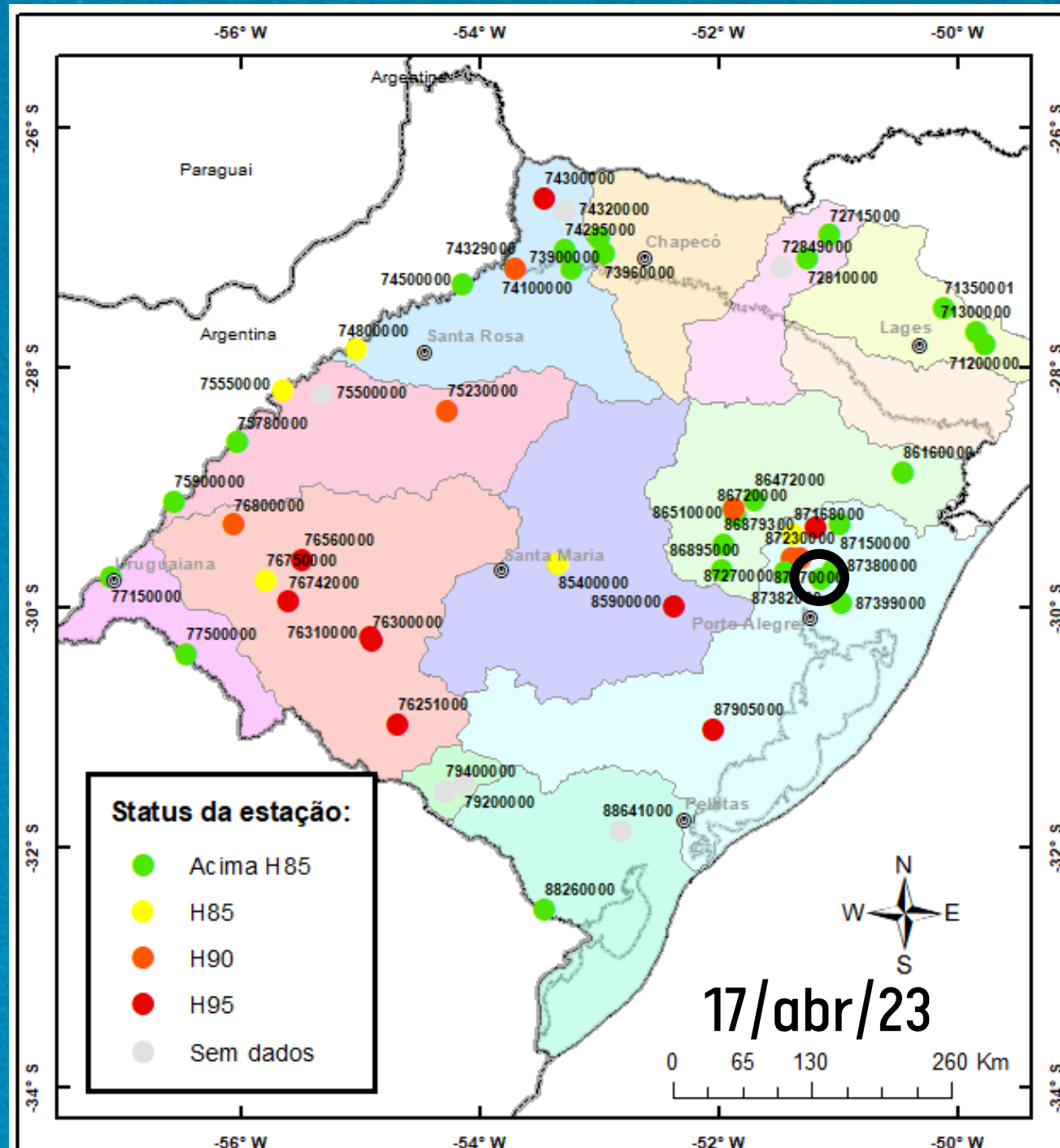


SISTEMA DE ALERTA HIDROLÓGICO - RIO URUGUAI

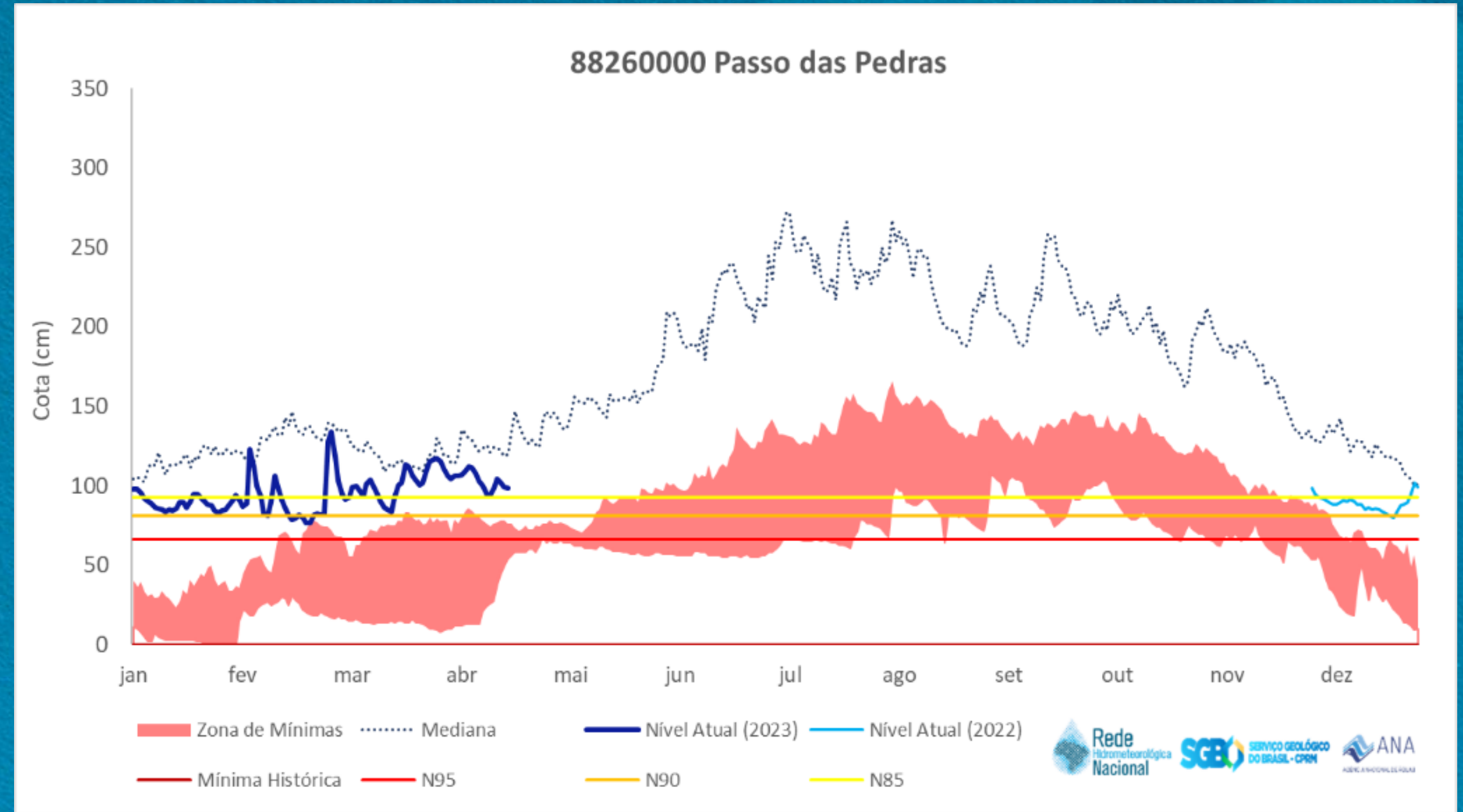
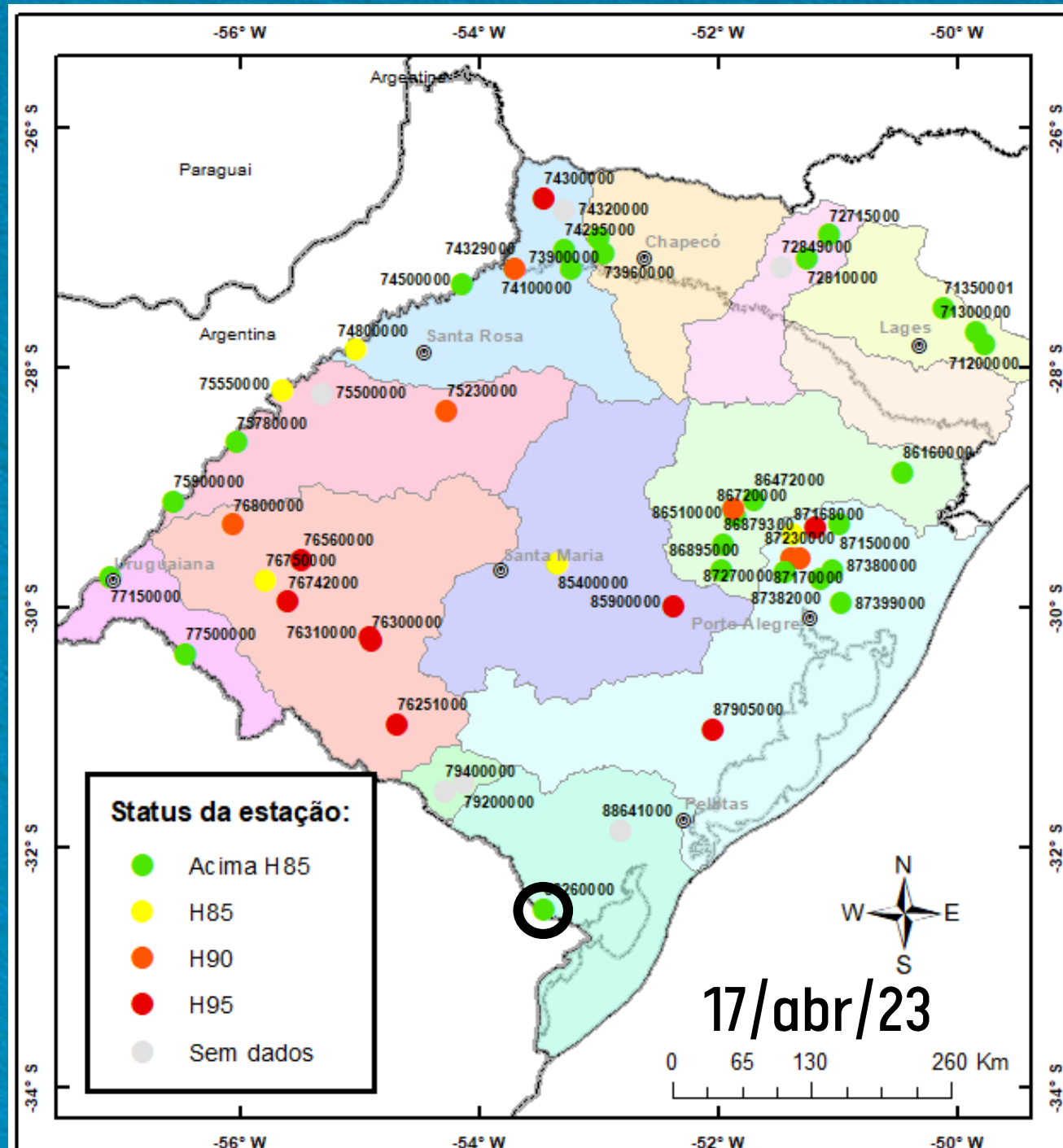


<http://sace.cprm.gov.br/uruguai/>

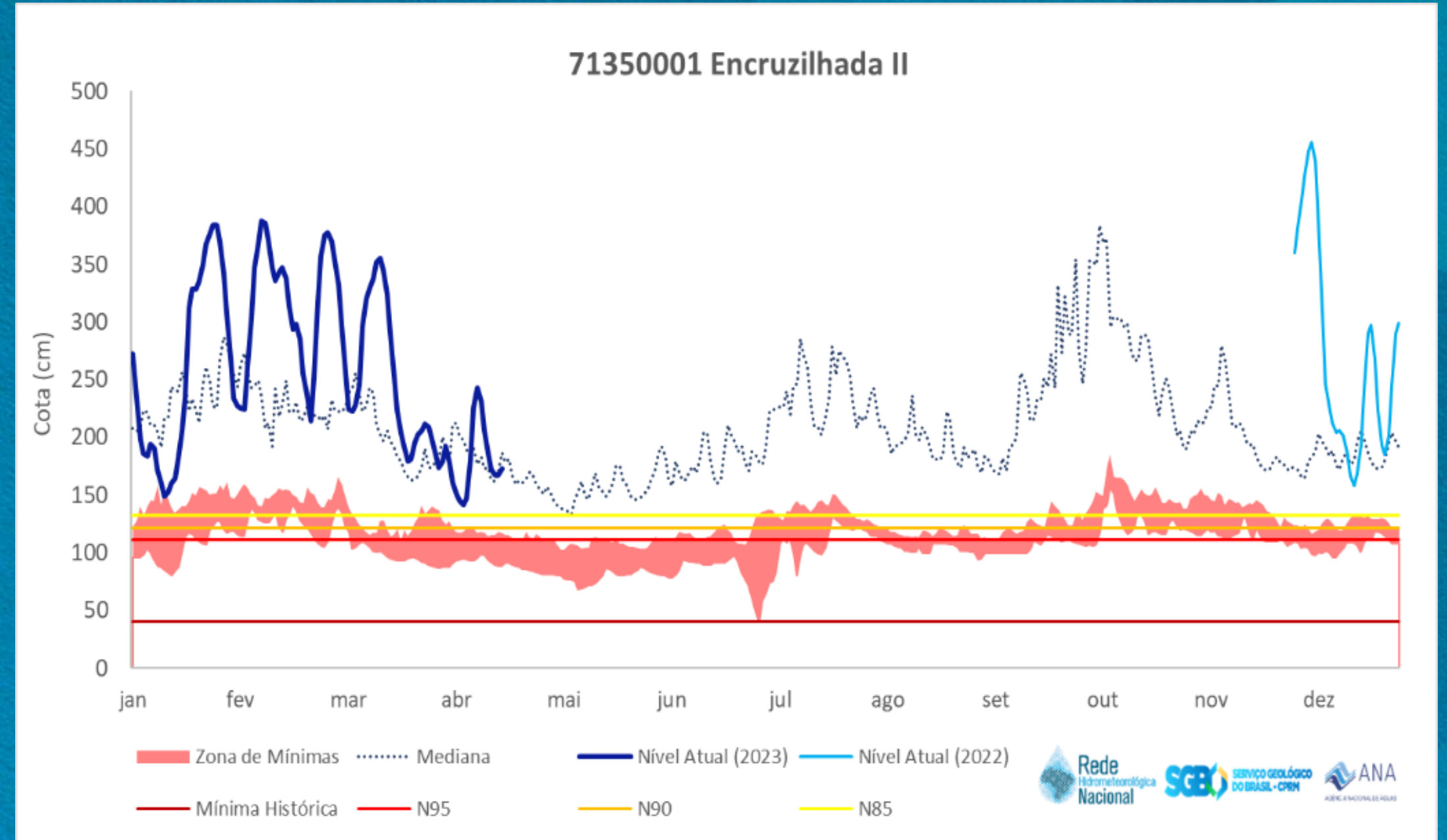
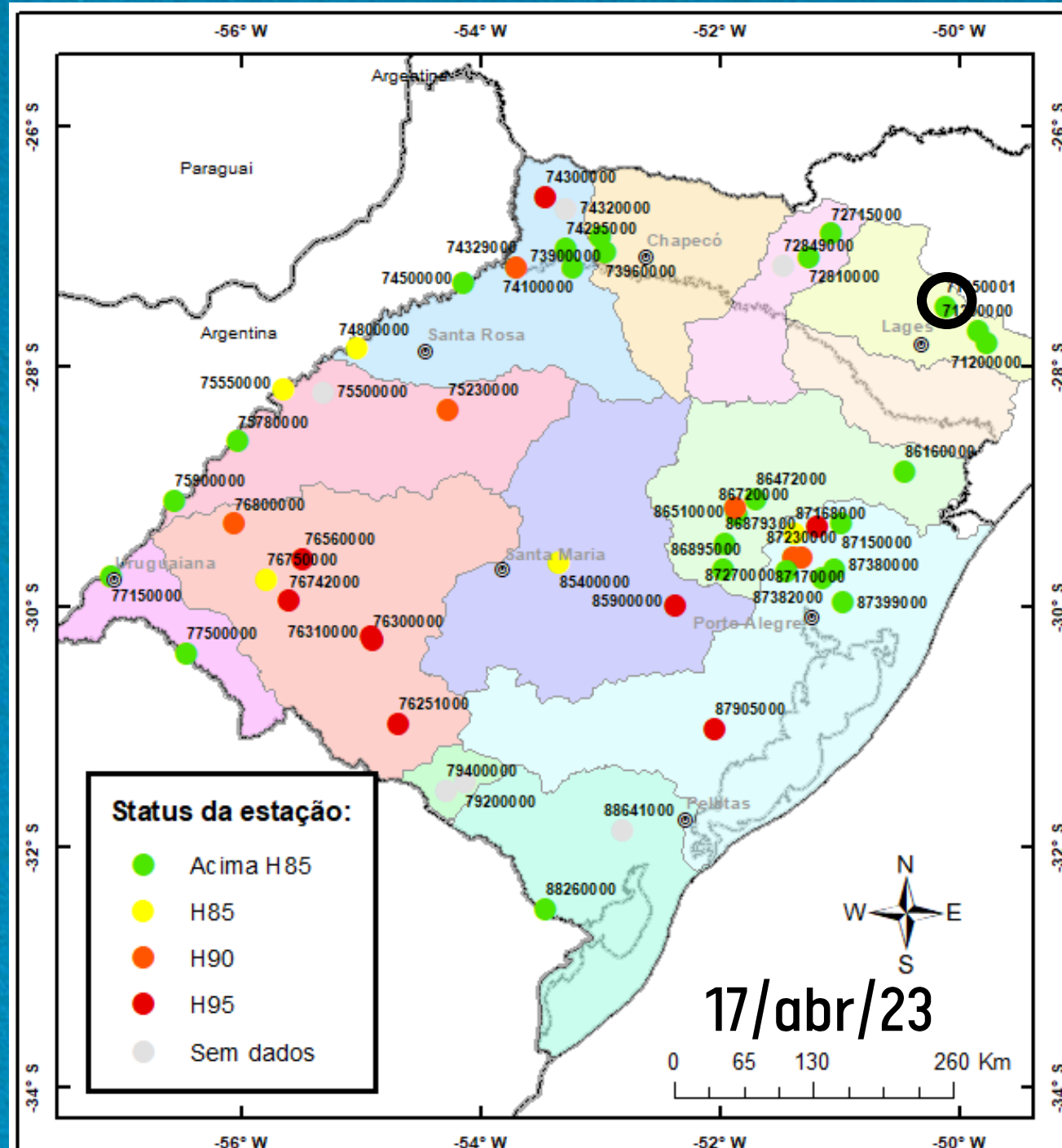
OUTROS PONTOS DE MONITORAMENTO



OUTROS PONTOS DE MONITORAMENTO



OUTROS PONTOS DE MONITORAMENTO



MONITORAMENTO ESPECIAL DA ESTIAGEM



The screenshot shows the SACE website interface. At the top, there is a banner with the 'sace' logo on the left and the 'SGB DO BRASIL - CPRM' logo on the right. Below the banner is a navigation menu with the following items: 'Página Inicial', 'Bacias Monitoradas', 'Manchas de Inundação', 'Secas e Estiagens' (highlighted with a red box), and 'Monitoramento Especial'. On the left side, there is a sidebar with a list of menu items: 'SACE Monitoramento', 'Estiagem 2014 a 2020', 'Estiagem 2021', 'Estiagem 2022', 'Estiagem 2023' (highlighted with a red box), and 'Estados de SC e RS' (highlighted with a red box). Below the sidebar, there is a section titled 'ESTIAGEM 2023 - ESTADOS DE SC E RS' which contains a table of files. The table has a header 'Arquivo' and a list of files with IDs from 2023 016 down to 2023 007. At the bottom of the table, there are navigation controls including a page number '1/2' and a dropdown menu set to '10'.

Página Inicial - Bacias Monitoradas - Manchas de Inundação - **Secas e Estiagens** - Monitoramento Especial

SACE Monitoramento

Estiagem 2014 a 2020

Estiagem 2021

Estiagem 2022

Estiagem 2023

▸ **Estados de SC e RS**

Use das águas subterrâneas como reforço no abastecimento público

ESTIAGEM 2023 - ESTADOS DE SC E RS

Arquivo
2023 016
2023 015
2023 014
2023 013
2023 012
2023 011
2023 010
2023 009
2023 008
2023 007

« 1/2 » 10 ▾



The graphic features the 'SAH SISTEMA DE ALERTA HIDROLÓGICO' logo at the top left. The background is a photograph of a dry, rocky riverbed with a small pool of water. At the bottom, there is a dark blue banner with white text that reads: 'MONITORAMENTO HIDROLÓGICO ESPECIAL DA ESTIAGEM NOS ESTADOS DO RIO GRANDE DO SUL E SANTA CATARINA'.

SAH
SISTEMA DE ALERTA HIDROLÓGICO

MONITORAMENTO HIDROLÓGICO ESPECIAL DA ESTIAGEM NOS ESTADOS DO RIO GRANDE DO SUL E SANTA CATARINA

<http://www.cprm.gov.br/sace/>

gehitepa@sgb.gov.br

OBRIGADO (A)!

EQUIPE SAH'S SUREG-PA

alerta.cai@cprm.gov.br
alerta.taquari@cprm.gov.br
alerta.uruguai@cprm.gov.br
(51) 3406-7432



SECRETARIA DE
GEOLOGIA, MINERAÇÃO
E TRANSFORMAÇÃO MINERAL

MINISTÉRIO DE
MINAS E ENERGIA

GOVERNO
FEDERAL